

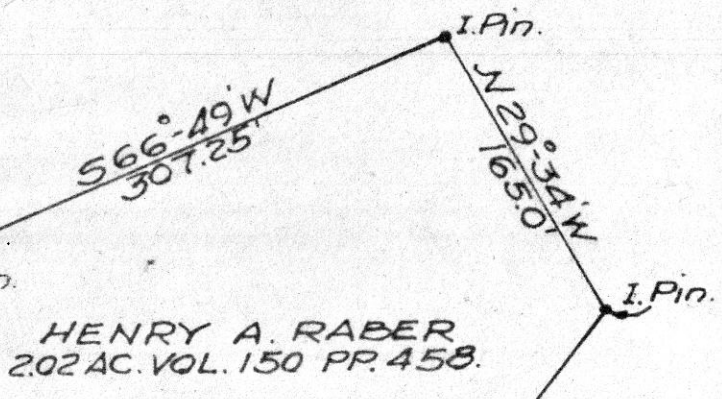
STONE
N.W. Corner
Section 2.

NORTH LINE OF SECTION TWO (2).

NORTH

WEST LINE OF SECTION TWO (2)

HOLMES CO.
HIGHWAY No. 68



LANDS OF DAVID J. YODER
165 acres VOL. 117. PP. 565

88382

REC'D: November 8, 1969

AT 10:52 O'CLOCK A.M.

RECORDED: November 8, 1969

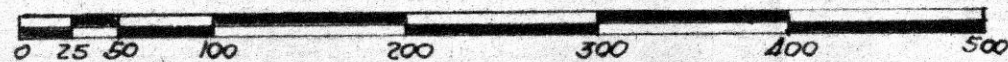
HOLMES CO. PLAT VOL. 5 PG. 19

FEE: \$ 4.24

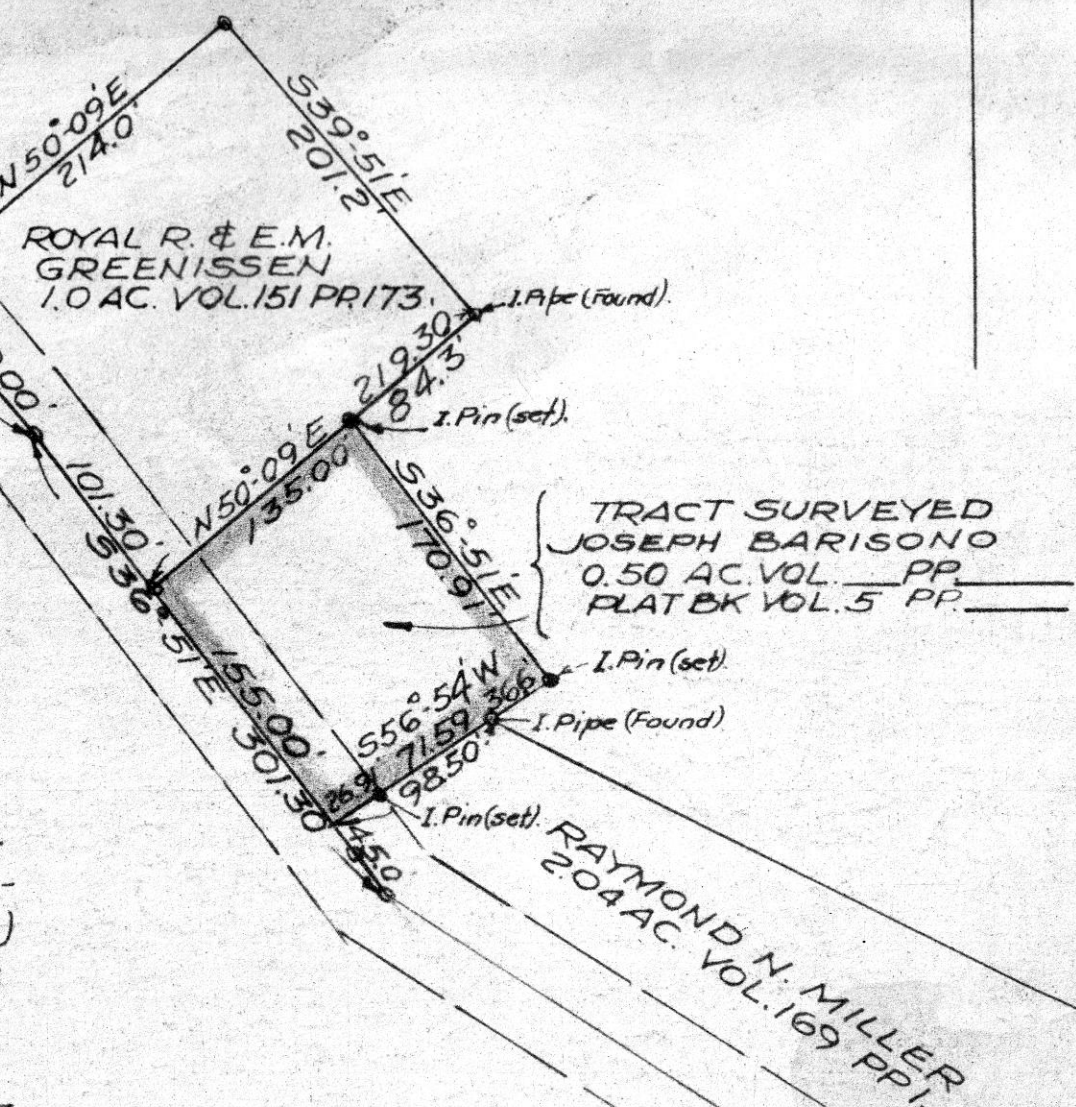
Richard Strasser RECORDER

PLAT OF SURVEY
FOR
JOSEPH BARISONO

Known as and being part of a former
165 acre tract in the northwest quarter of Section
Two (2), Township Eight (8), Range Six (6)
in Mechanic Township, Holmes County, State
of Ohio.



GRAPHIC SCALE IN FEET.
J. Perry Kaderly Regd. Surveyor 2931.
New Philadelphia, O. October 20, 1969.



15 3/4 X 14

