

N.W. Cor.  
N.E. Qr.  
Sec. 22, T-9, R-5

Township Road No. 135

1.34 AC.

1.12 AC.

N 3°00' E

852'

89.63'

I. Pin

589°53' E

549.5'

542.0'

N 89° 55' W

I. Pipe

90.0'

I. Pin

57°46' W

Post

Post

Post

N

83283

REC'D: May 12 - 1967

AT 11:40 O'CLOCK P.M.

RECORDED: May 12, 1967

HOLMES CO. Plat VOL. 4 PG. 36

FEE: \$1.08

*Evelyn Anderson* RECORDER

T. DEAN DAVIDSON

REGISTERED SURVEYOR No. 4776

1116 WALNUT ST. - DOVER, OHIO

Phone 22626

Scale 1" = 50' Date Nov. 1966

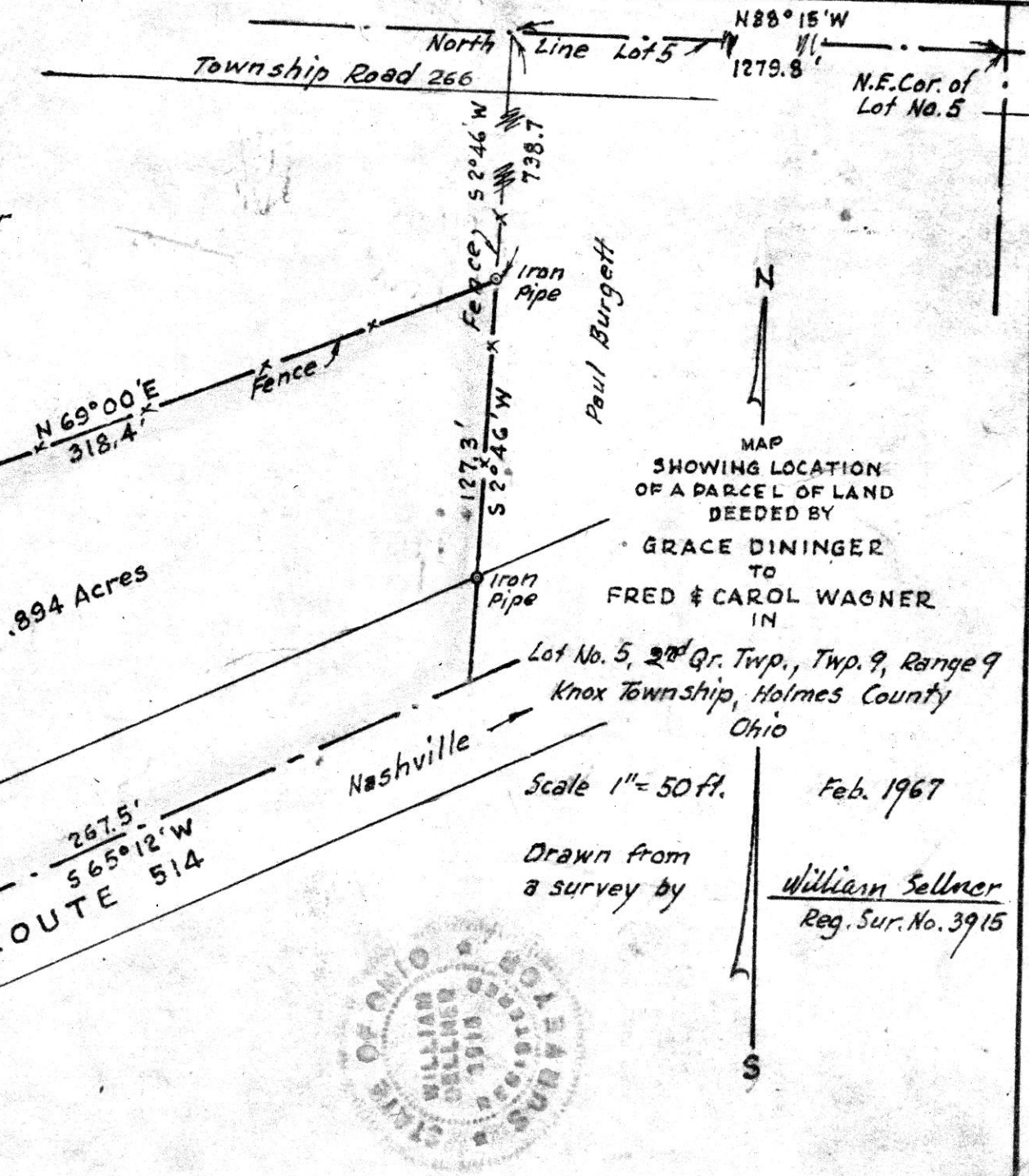
Plat of survey for  
Jacob J. Yoder  
N.E. Qr. Section 22  
T-9 R-5  
Walnut Creek Twp. Holmes County

83300

Grace Dininger

REC'D: May 15-1967  
AT 3:40 O'CLOCK P.M.  
RECORDED: May 17, 1967  
HOLMES CO. Dist. 4 VOL. 4 PG. 136  
FEE: \$ 1.00

Coody Anderson RECORDER



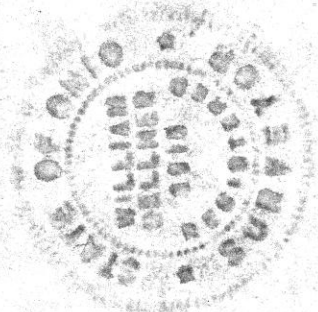
.894 Acres

Scale 1" = 50 ft.

Feb. 1967

Drawn from  
a survey by

William Sellner  
Reg. Sur. No. 3915





83284

REC'D: May 12-1967

AT 4:40 O'CLOCK P.M.

RECORDED: May 12, 1967

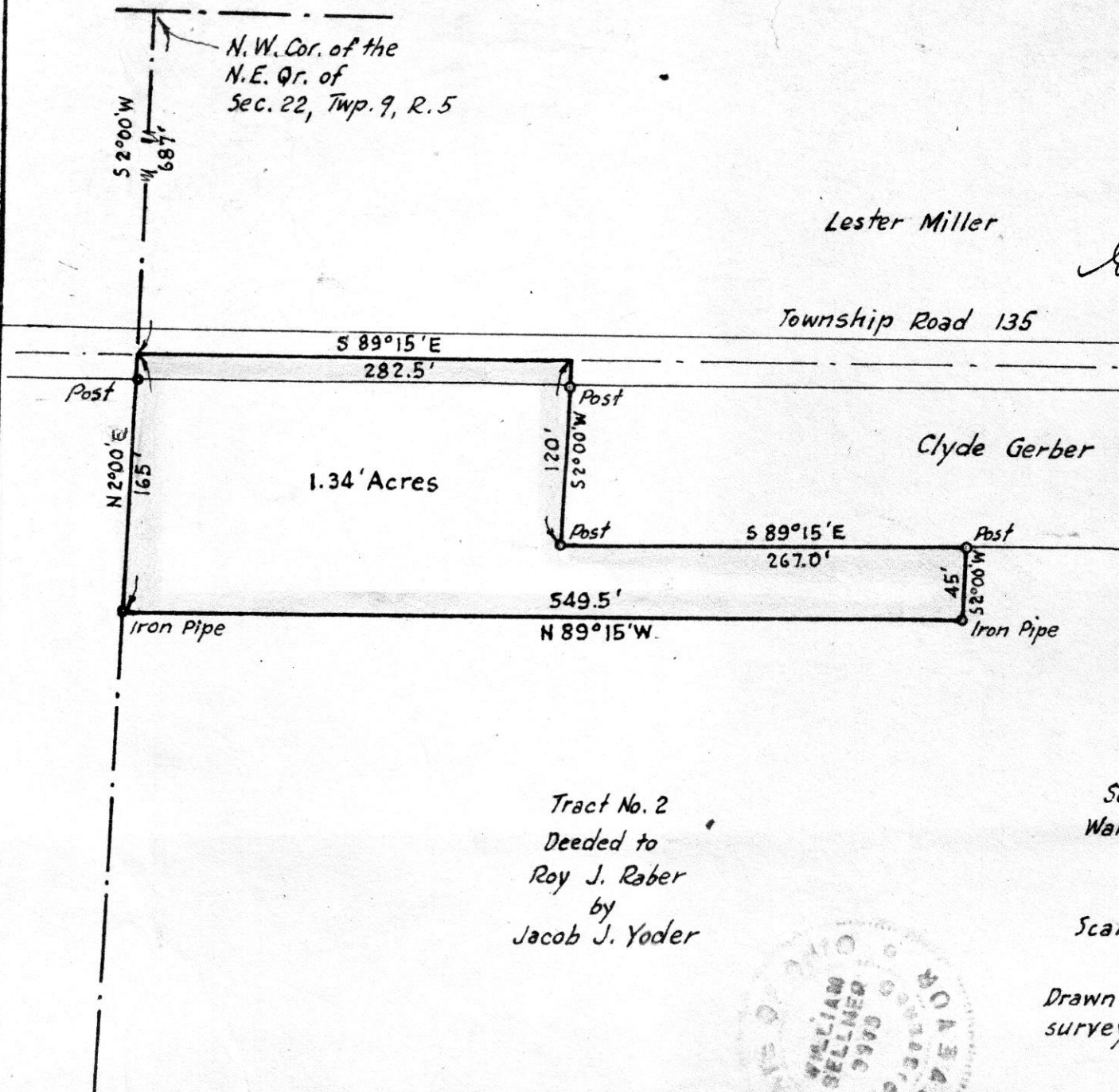
HOLMES CO. Plat VOL. 4 PG. 36

FEE: \$ 1.00

*Rewlyn Anderson* RECORDER

Lester Miller

Township Road 135



1.34 Acres

Clyde Gerber

N

MAP  
SHOWING LOCATION  
OF THE PARCEL LAND  
RETAINED

BY  
JACOB J. YODER  
IN

Section 22, Township 9, Range 5  
Walnut Creek Township, Holmes County  
Ohio

Tract No. 2  
Deeded to  
Roy J. Raber  
by  
Jacob J. Yoder

Scale 1" = 100 ft.

April 1962

Drawn from a  
survey by

*William Sellner*  
Reg. Sur. No. 3915

