

Holmes County Road 292

N.E. Cor. of Lot 6

MAP SHOWING LOCATION OF A TRACT OF LAND DEED BY ROBERT L. HORNER TO RICHARD & DORIS STYER

IN Lot No. 6, 3rd Qr. Twp, Twp 9, Range 7 Hardy Township, Holmes County Ohio

Scale 1" = 200 Ft July 1966

Drawn from a survey

William Sellner Reg. Sur. No 3915

Lawrence Biddeker

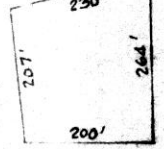
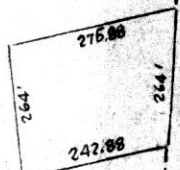
Iron Pipe

566.00'E 1023.2'

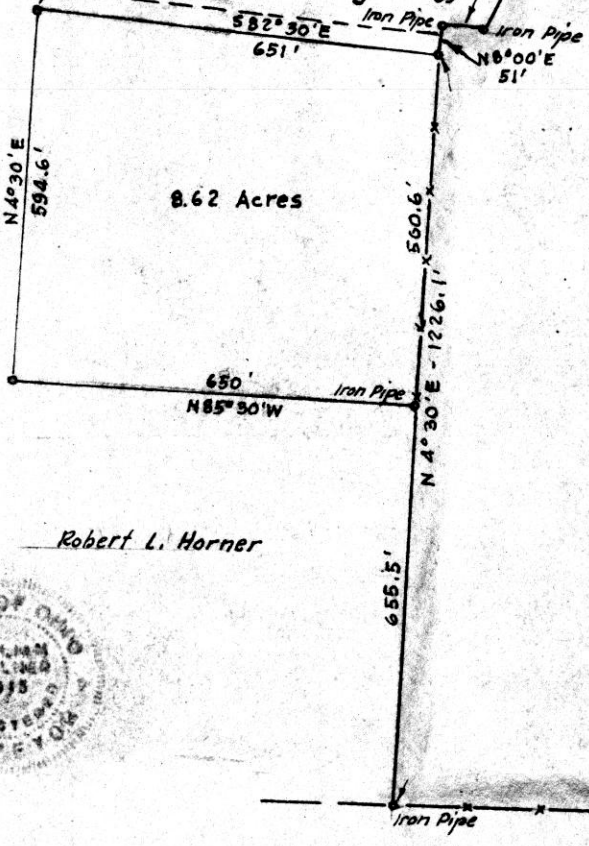
East Line of Lot 6 1188' 53.48"W

T. & R. Northtown 3.1

Robert L. Horner



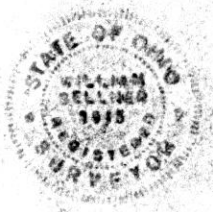
Private Roadway



8.62 Acres

47.5 Acres

Robert L. Horner



81399

REC'D: Aug 1-1966 AT 12:16 O'CLOCK P.M. RECORDED: August 3, 1966 HOLMES CO. REC. VOL. 4 PG. 106 FEE: \$1.65

Wolyn Biddeker RECORDER

M. D. Biddeker

1414 X 1114





81408

REC'D August 22 1966  
AT 10:40 O'CLOCK A.M.

RECORDED: Aug. 22 1966  
HOLMES CO. Plat VOL. 4, PG. 106

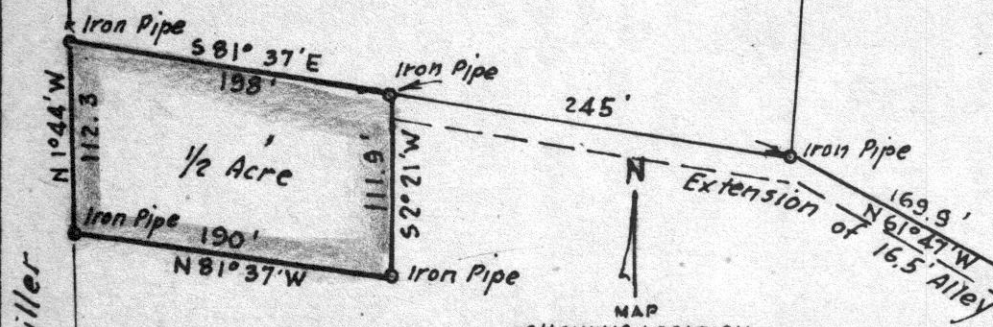
FEE: \$1.<sup>00</sup>

Judy Anderson RECORDER

Township Road 421

Holmes County Road 206

Ralph Philabaum



Jonas E Miller  
AMANDA H.W.

MAP  
SHOWING LOCATION  
OF A PARCEL OF LAND  
DEEDED BY  
JONAS E. MILLER  
TO  
KATIE STYER  
IN

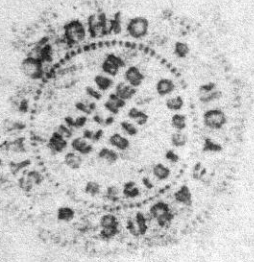
Lot No. 1, 3<sup>rd</sup> Qr, Twp. 10, Range 6  
Salt Creek Twp., Holmes County  
Ohio

Scale 1" = 100 ft.

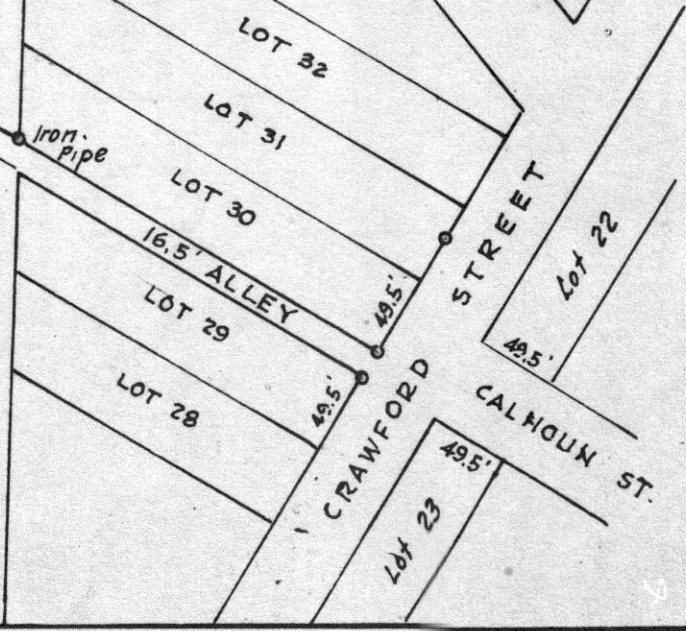
July 1966

Drawn from a  
survey by

William Sellmer  
Reg. Sur. No. 3915



Jonas E Miller



NELLIEM. PATTERSON  
To  
LAKE BUCKHORN, INC.

Survey Of Land In Mechanic  
Township, Holmes County, Ohio,  
in Section 21, Township 8,  
Range 7.

Certify Correct By  
John Lazarowicz, Registered  
Surveyor No. S-5220.

81452

REC'D: August 6-1966  
AT 10:50 O'CLOCK A.M.  
RECORDED: August 8, 1966  
HOLMES COUNTY VOL 4 PG 106  
FEE: \$1.00

*E. W. Anderson* RECORDER

