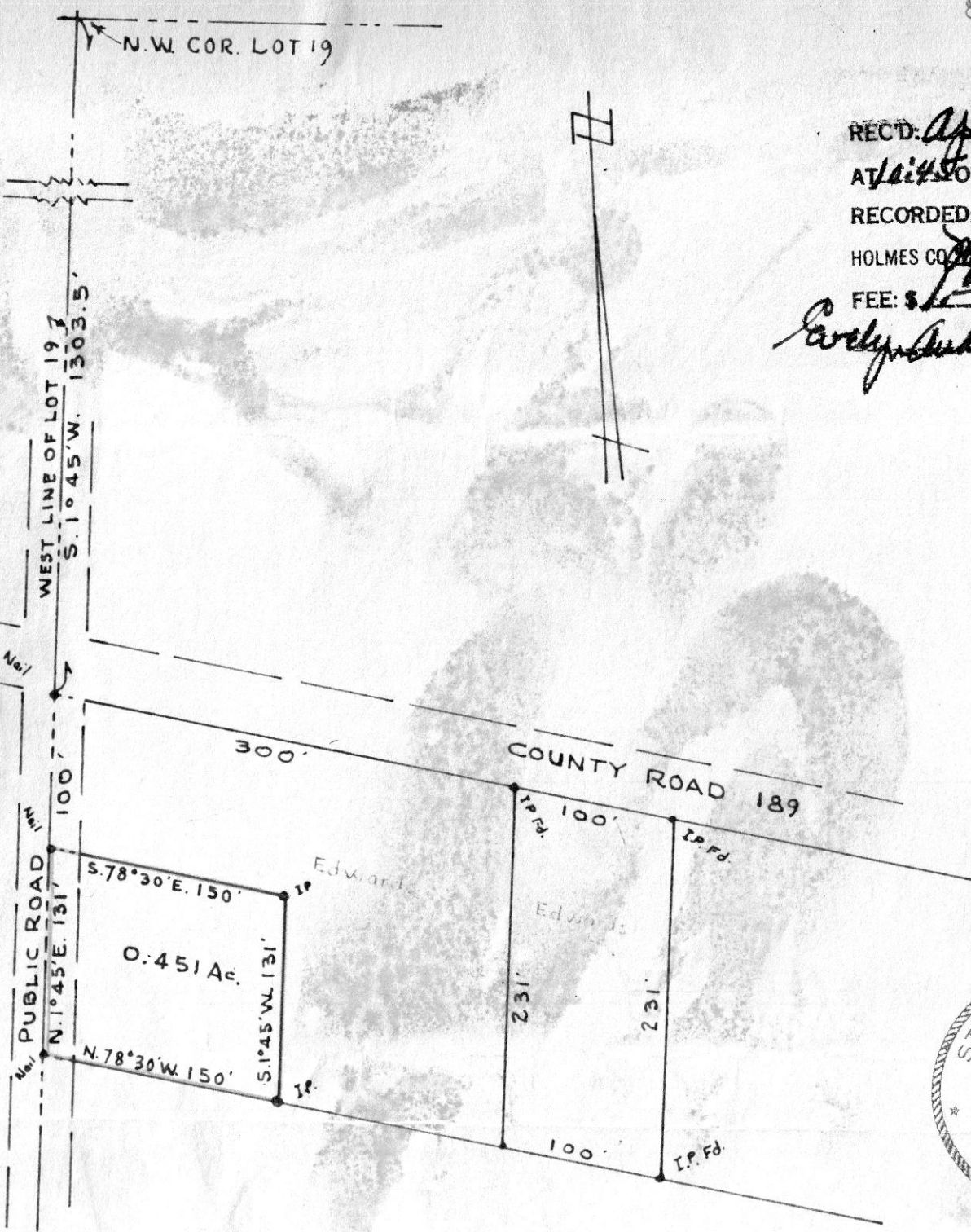


REC'D: *April 23 - 1966*
AT *10:45* O'CLOCK *AM*
RECORDED: *April 26, 1966*
HOLMES CO. *Vol. 4* PG. *90*
FEE: \$ *1.00*

Earl J. Anderson RECORDER



SURVEY OF
PART OF O.L. No. 8, IN THE S.W. PART OF MILITARY
LOT No. 19, 4TH QUARTER, TOWNSHIP 10, RANGE 6, SALT
CREEK TOWNSHIP, HOLMES COUNTY, OHIO.
FOR G.F. EDWARDS, BENTON, O.

BY
R. C. SCHNEIDER #4177

SCALE: 1" = 100'

APRIL 12, 1966

PUBLIC ROAD 1/4 Sec

5.74° 49' W. 261.8'

IP set

S 2° 00' W 365.5'

2.322 ACRES

N. 2° 00' E. 443.5'

SECTION LINE

Stone Fd.

S. 87° 51' E. 250.00'

Stone Fd.

80777

REC'D: April 23, 1966

AT 11:50 O'CLOCK Here

RECORDED: April 26, 1966

HOLMES CO. Plat VOL. 4 PG. 90

FEE: \$ 1.00

Evley Anderson RECORDER

N.E. 1/4 SEC 9

N.W. 1/4 SEC. 10

N 2° E. 868.58'

STONE



PART OF N.E. QUAR. SECTION 9, T.8 R.6
MECHANIC TOWNSHIP, HOLMES CO., O.

SURVEYED FOR A. RABER
BY R. C. SCHNEIDER #4177, NAVARRE, O.

SCALE 1" = 100'	DATE MAR 1966	FILE
-----------------	---------------	------

DRAWN BY _____
CHECKED BY _____

