

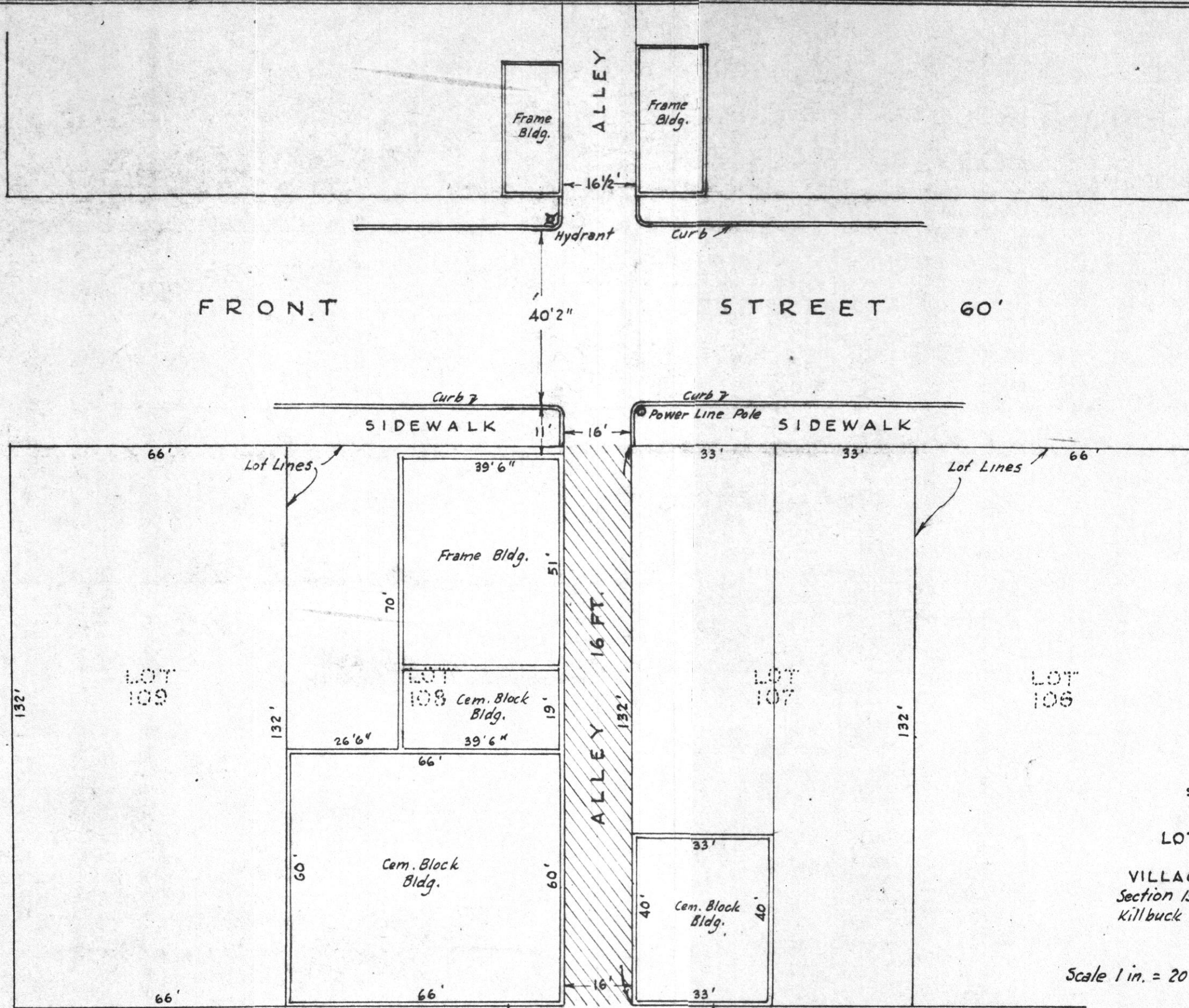
14 1/2 X 15 1/2

WATER STREET 33 FT.

MAIN ST. 60 FT.

FRONT

STREET 60'



PLAT SHOWING THE ALLEY BETWEEN LOTS 107 & 108

IN THE VILLAGE OF KILLBUCK Section 15, Township 8, Range 7 Killbuck Township, Holmes County Ohio

Scale 1 in. = 20 ft.

July 1965

Drawn from a survey by

William J. Seftner Reg. Sur. No. 3915

REC'D December 14-1965 AT 11:30 O'CLOCK H.M. RECORDED December 14-1965 HOLMES CO. Plat Vol 4 PG. 27 FEE: \$3.00

Evelyn Anderson RECORDER

