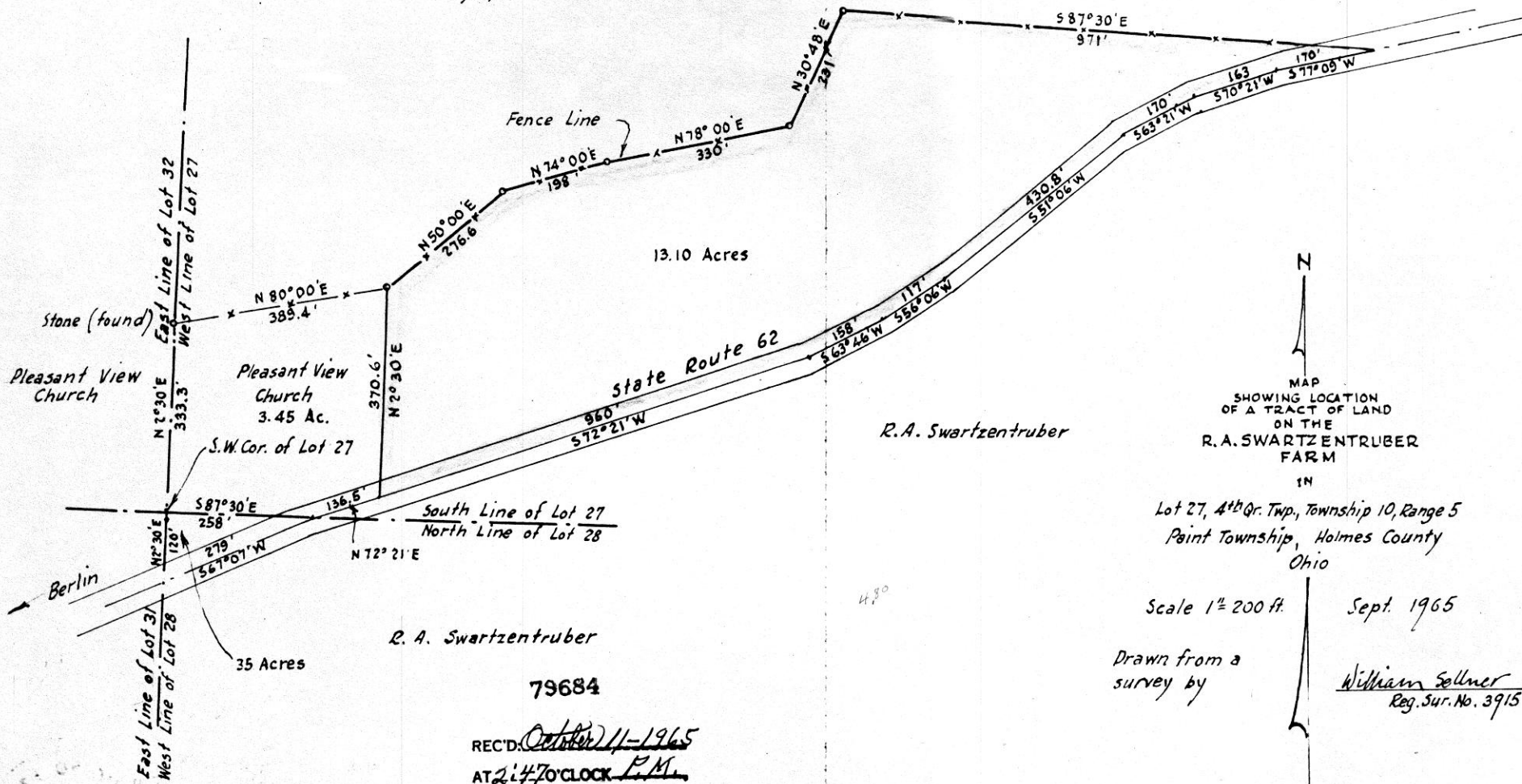


16" x 10"

Susie Yutzy, et al

Susie Yutzy, et al.



MAP  
SHOWING LOCATION  
OF A TRACT OF LAND  
ON THE  
R. A. SWARTZENTRUBER  
FARM  
IN  
Lot 27, 4th Qr. Twp., Township 10, Range 5  
Point Township, Holmes County  
Ohio

Scale 1" = 200 ft. Sept. 1965

Drawn from a survey by

William Sellner  
Reg. Sur. No. 3915

R. A. Swartzentruber

79684

REC'D: October 11-1965  
 AT 2:47 O'CLOCK P.M.  
 RECORDED: Oct. 13, 1965  
 HOLMES CO. Vol. 4 PG. 73  
 FEE: \$160

*Evelyn Anderson* RECORDER



REC'D: *October 23-1965*

79742

VOL 4 PAGE 73

AT 9:42 O'CLOCK A.M.  
RECORDED: *October 25-1965*  
HOLMES CO. PLAT VOL. 4 PG. 73  
FEE: \$ 4.00

*W. J. Ludeman* RECORDER

Parcel deeded to Adin Raber Oct. 1963

Adin Raber .4 Ac.

.5 Acre

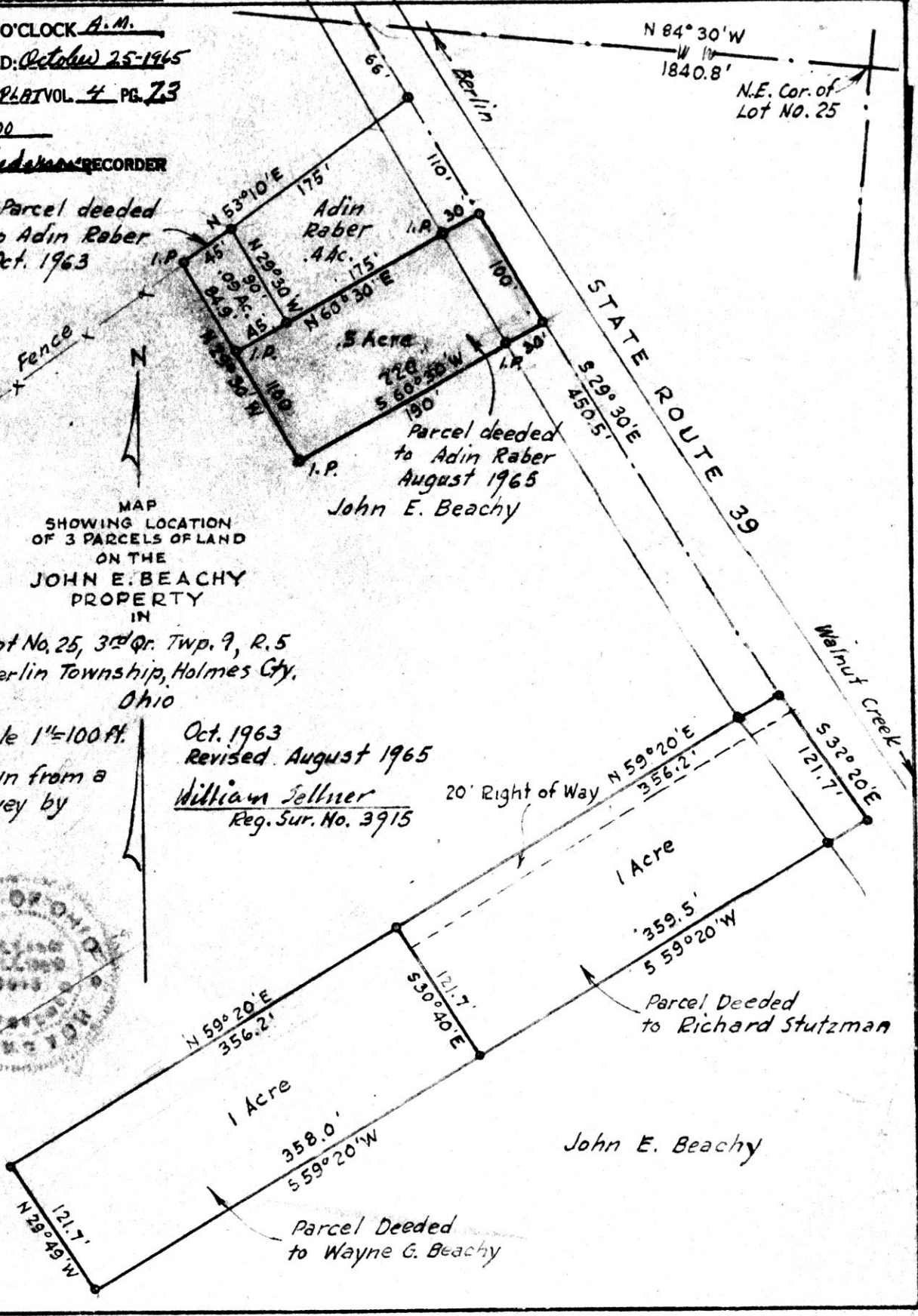
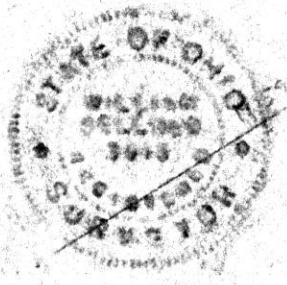
Parcel deeded to Adin Raber August 1965  
John E. Beachy

MAP SHOWING LOCATION OF 3 PARCELS OF LAND ON THE JOHN E. BEACHY PROPERTY IN

Lot No. 25, 3rd Qr. Twp. 9, R. 5  
Berlin Township, Holmes Cty.  
Ohio

Scale 1"=100 Ft.  
Drawn from a survey by

Oct. 1963  
Revised August 1965  
*William Sellner*  
Reg. Sur. No. 3915



John E. Beachy

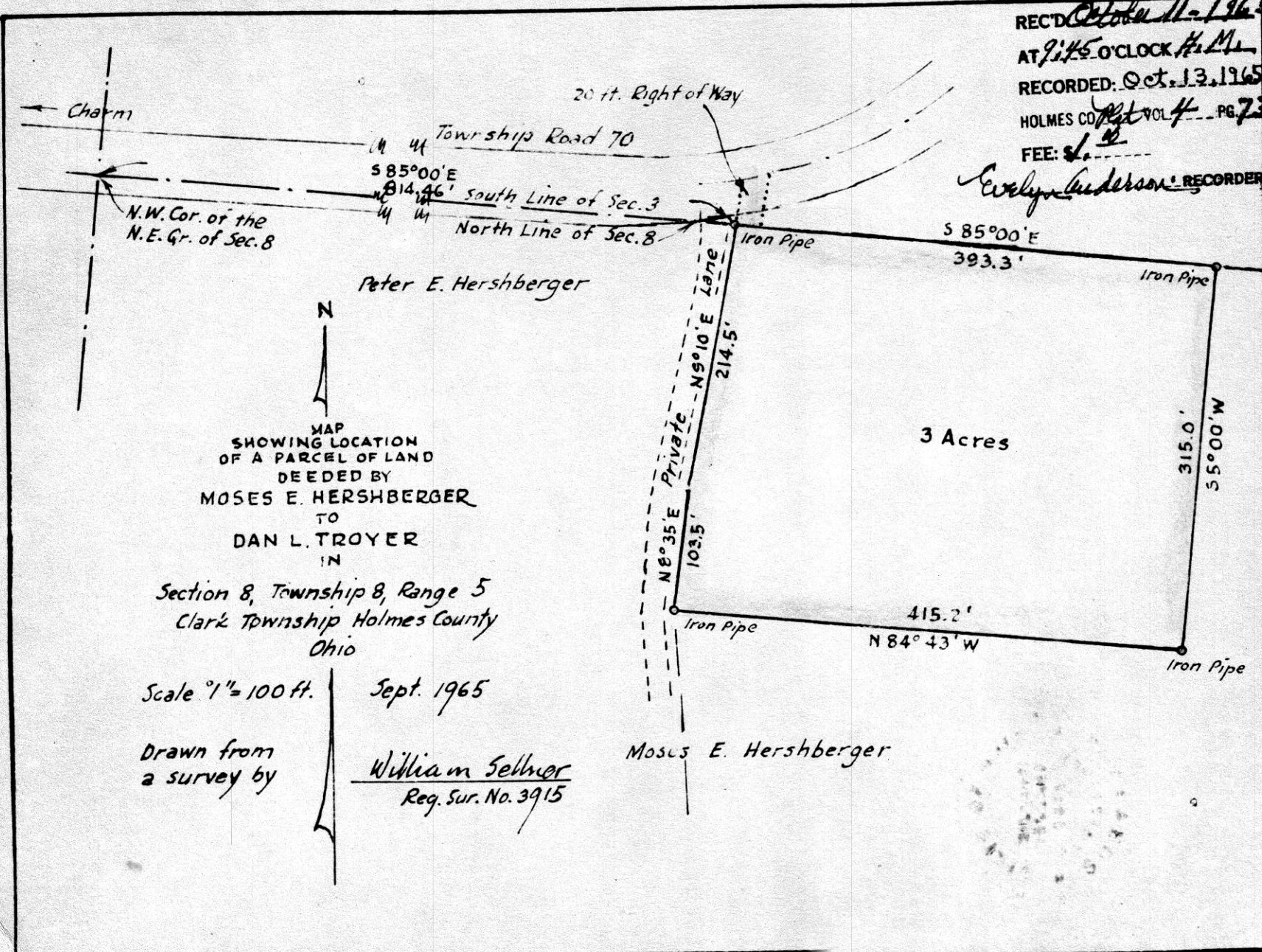
Parcel Deeded to Wayne G. Beachy

Parcel Deeded to Richard Stutzman



REC'D *October 11-1965*  
 AT *9:45 O'CLOCK P.M.*  
 RECORDED: *Oct. 13, 1965*  
 HOLMES COUNTY VOL *4* PG *73*  
 FEE: *\$1.00*

*Evelyn Anderson* RECORDER



MAP  
 SHOWING LOCATION  
 OF A PARCEL OF LAND  
 DECEDED BY  
 MOSES E. HERSHBERGER  
 TO  
 DAN L. TROYER  
 IN

Section 8, Township 8, Range 5  
 Clark Township Holmes County  
 Ohio

Scale 1" = 100 ft.      Sept. 1965

Drawn from  
 a survey by

*William Sellner*  
 Reg. Sur. No. 3915

Paul O. Taggart

REC'D *Oct 26-1965*  
AT 3:50 O'CLOCK *P.M.*  
RECORDED *Oct 28-1965*  
HOLMES CO. *Vol 4* PG. 73  
FEE: \$1.00

*Wesley Anderson* RECORDER

N



MAP  
SHOWING LOCATION  
OF A PARCEL OF LAND  
ON THE

PAUL O. TAGGART  
PROPERTY  
IN

Section 14, Township 17, Range 14  
Ripley Township, Holmes County  
Ohio

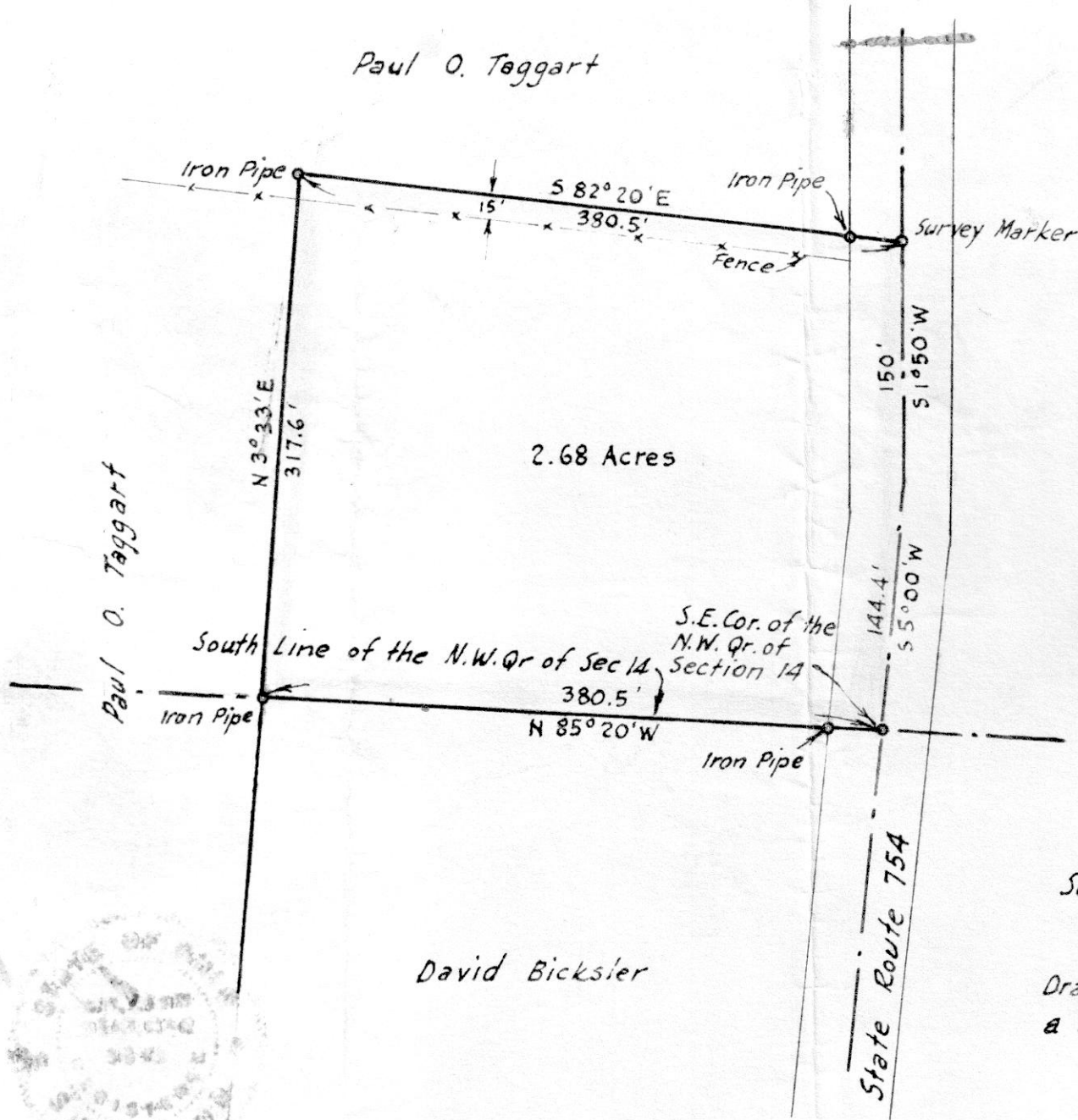
Scale 1" = 100 ft.

Sept. 1965

Drawn from  
a survey by

*William Sellmer*  
Reg. Sur. No. 3915

2.68 Acres



Paul O. Taggart

David Bicksler

