

Township Road 115  
North Line of Section 12

N.W. Cor. of  
N.E. Qr. of  
Section 12

79082

RECT'D: July 6 - 1965  
AT 3:28 O'CLOCK P.M.  
RECORDED: July 7, 1965  
HOLMES COUNTY VOL. 7 PG. 63  
FEE: \$    

*Corlynn Anderson* RECORDER

Township Road 114

S 2° 05' W  
330'

N 2° 05' E  
239'

S 88° 00' E  
455.6'

S 2° 05' W  
239'

2.5 Acres

455.6'  
N 88° 00' W

Neal E. Miller



MAP  
SHOWING LOCATION  
OF A PARCEL OF LAND  
DECEDED BY  
NEAL E. MILLER  
TO  
ELI STUTZMAN  
IN

Section 12, Township 8, Range 5  
Clark Township Holmes County  
Ohio

Scale 1" = 100 ft. April 1965

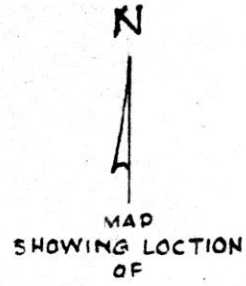
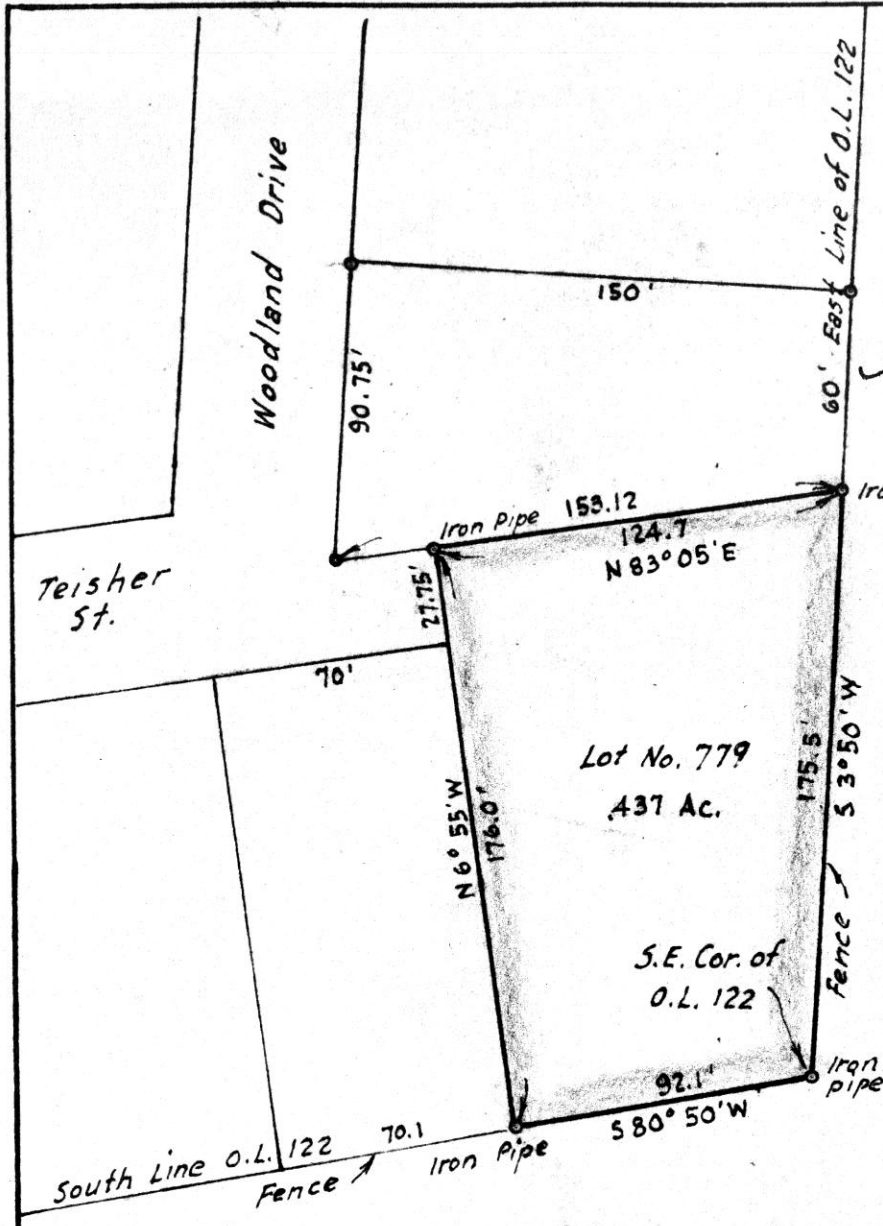
Drawn from  
a survey by

William Sellner  
Reg. Sur. No. 3915



RECD: July 12-1965  
AT 3:35 O'CLOCK P.M.  
RECORDED: July 13, 1965  
HOLMES COUNTY VOL. 4 PG. 63  
FEE: \$1.00

*W. Selmer* RECORDER



IN THE  
Village of Millersburg  
Part of O.L. 122, Twp. 9, Range 7  
Hardy Township, Holmes County  
Ohio

Scale 1" = 50 ft.

July 1965

Drawn from  
a survey by

*William Selmer*  
Reg. Sur. No  
3915





15x10

VOL 4 PAGE 63 N

MAP  
SHOWING LOCATION  
OF A PARCEL OF LAND  
DEEDED BY  
ROBERT M. KINSEY

TO  
THE VILLAGE OF KILLBUCK  
IN  
Section 15, Township 8, Range 7  
Killbuck Township, Holmes County  
Ohio

Scale 1" = 100 ft.

April 1965

Drawn from a  
survey by

*William Sellner*  
Reg. Sur. No. 3915

Robert M. Kinsey

N 73° 06' E  
466.0'

Point in Center  
of Creek

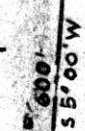
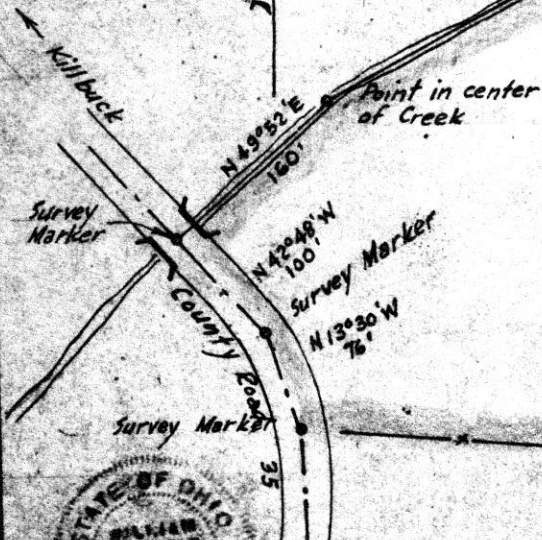
79114

RECT: *July 12-1965*  
AT 3:32 O'CLOCK P.M.  
RECORDED: *July 13, 1965*  
HOLMES CO. VOL. *K* PG. *62*

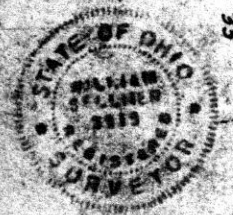
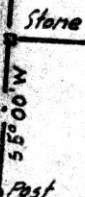
FEE: \$*5.00*  
*Wally Anderson*  
RECORDER

10.6 Acres

Evelyn Scott



N.E. Cor.  
S.W. Cr.  
N.E. Cr.  
Section 15



Cliff Clark, et al

Nashville ← State Route 39 → Millersburg →

North Line of Lot 16

S 84° 22' E 96.0' N 84° 22' W 150'

79166

REC'D: July 17, 1965 Eli C. Miller  
 AT 10:45 O'CLOCK A.M.  
 RECORDED: July 19, 1965  
 HOLMES CO. PLAT VOL 4 PG 63  
 FEE: \$ 1.00

*W. Selmer* RECORDER



MAP  
 SHOWING LOCATION  
 OF A PARCEL OF LAND  
 DEEDED BY  
 ELI C. MILLER  
 TO  
 GLENDON SMITH  
 IN

1<sup>st</sup> Qr. Twp., Lot 16, Township 9 Range 8  
 Monroe Township, Holmes County  
 Ohio

Scale 1" = 100 ft.

July 1965

Drawn from a  
 survey by

William Selmer  
 Reg. Sur. No. 3915

