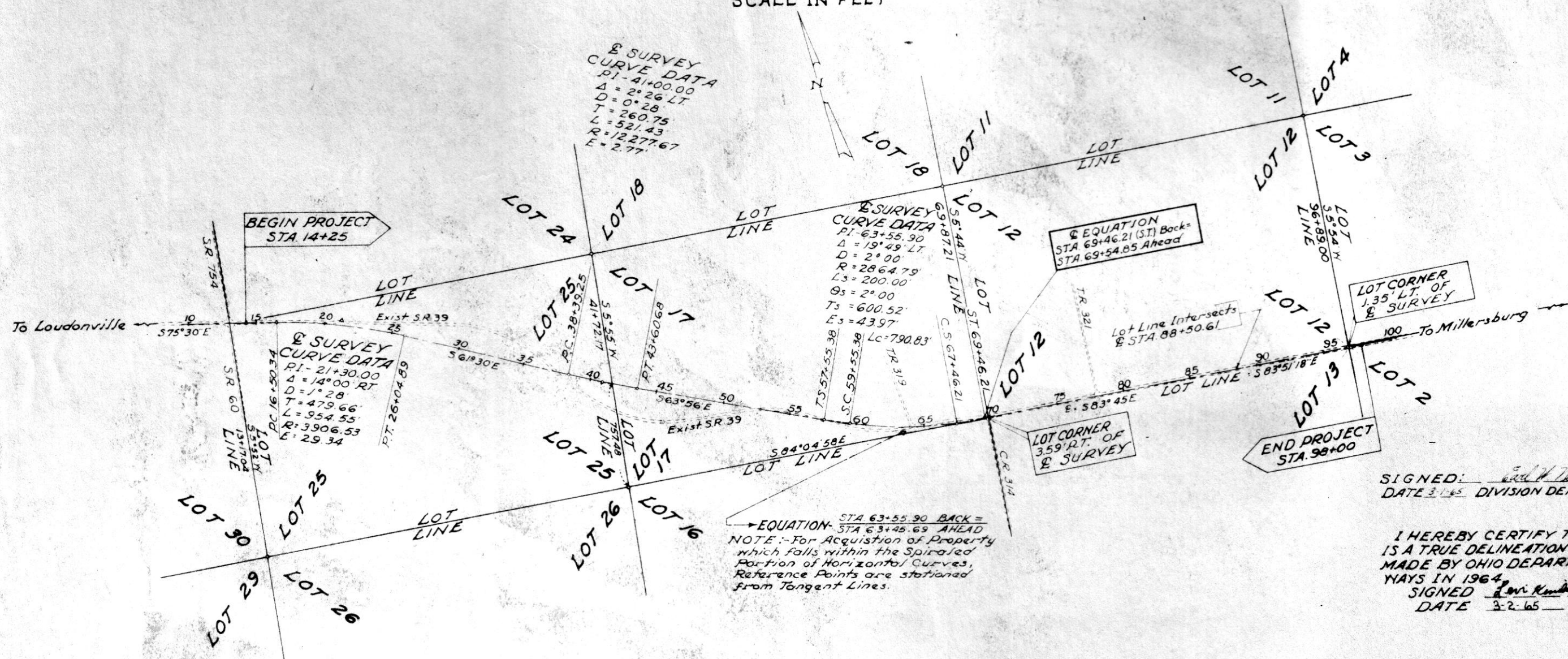
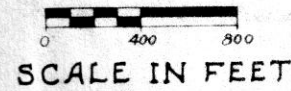


10 1/2' x 16 1/2"

78530

CENTER LINE SURVEY PLAT

STATE ROUTE 39 - SEC. 11.64
HOLMES COUNTY, OHIO
MONROE TWP. T-9-N R-8-W
LOTS - 2, 3, 12, 13, 16, 17 & 25



SIGNED: *Ed W. Wilson*
DATE 3-1-65 DIVISION DEPUTY DIRECTOR

I HEREBY CERTIFY THAT THIS PLAT IS A TRUE DELINEATION OF A SURVEY MADE BY OHIO DEPARTMENT OF HIGHWAYS IN 1964.
SIGNED: *Earl K. Marshall*
DATE 3-2-65

EQUATION: STA 63+55.90 BACK = STA 63+45.69 AHEAD
NOTE: For Acquisition of Property which falls within the Spiraled Portion of Horizontal Curves, Reference Points are Stationed from Tangent Lines.

MONUMENT ASSEMBLIES WILL BE SET ON CENTERLINE, DURING CONSTRUCTION, AT THE FOLLOWING LOCATIONS

STATION 14+25	STATION 63+50
16+50.34(PC)	67+46.21(C.S.)
21+50	69+46.21(ST) BACK =
26+04.89(PT)	69+54.85 AHEAD
32+00	75+00
38+39.25(PC)	80+00
43+60.68(PT)	85+00
48+00	90+00
53+00	95+00
57+55.38(T.S.)	
59+55.38(S.C.)	

RECEIVED: Mar. 10, 1965
RECORDED: Mar. 10, 1965
BOOK 4 PAGE 52
Evelyn Anderson,
COUNTY RECORDER
Fee: \$1.73