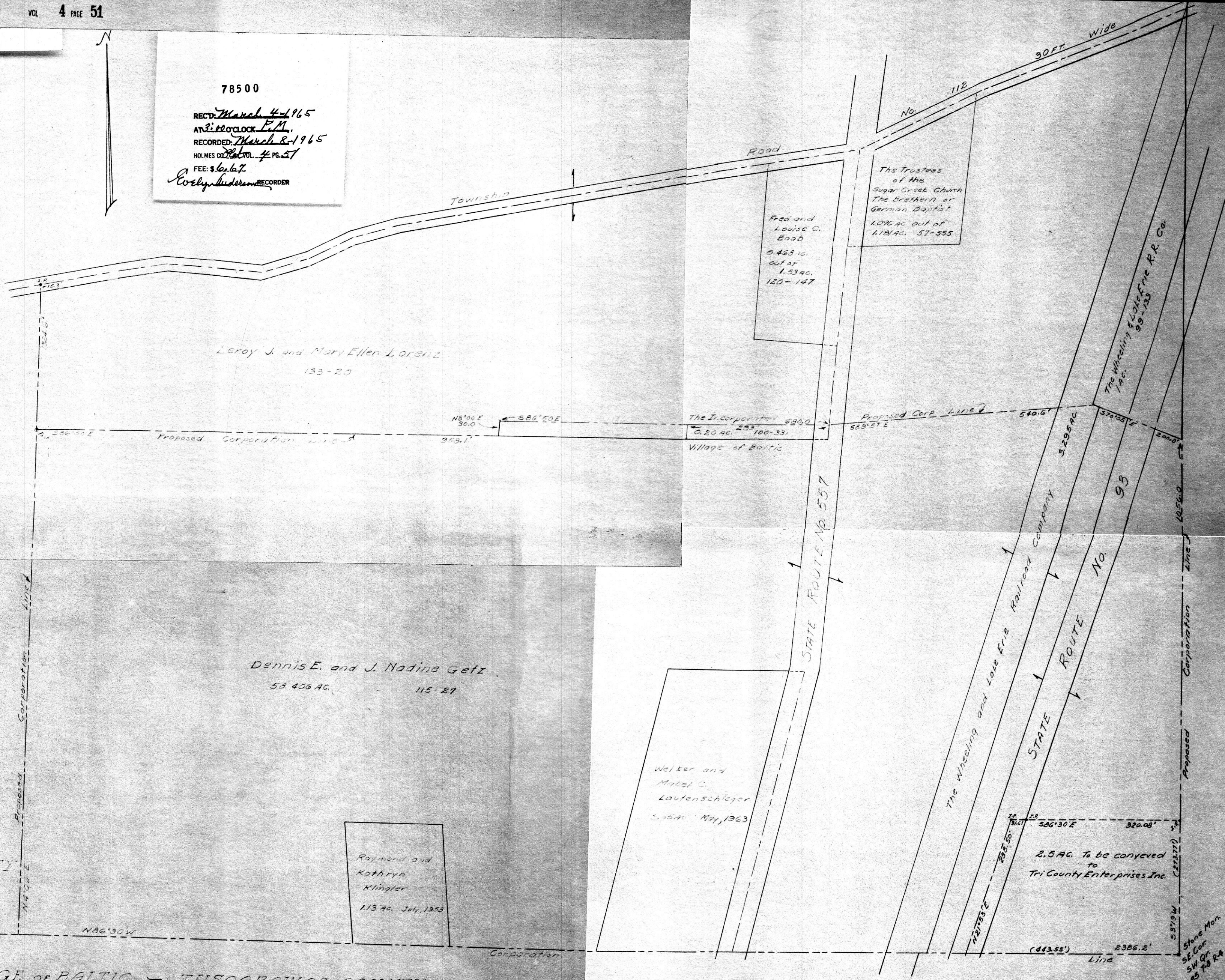


78500

RECT: March 4-1965  
AT 2:00 O'CLOCK P.M.  
RECORDED: March 8-1965  
HOLMES CO. PLAT NO. 4 PG. 51  
FEE: \$6.67  
Cecily Anderson RECORDER



HOLMES COUNTY

COSHINGTON COUNTY

VILLAGE of BALTIC - TUSCARAWAS COUNTY

PLAT OF PROPOSED ANNEXATION  
TO  
THE VILLAGE OF BALTIC  
SW. Qtr. Sec. 25 T. 8 R. 4 Holmes Co.  
Total Acreage 53.36 AC. Scale 1" = 100' Sept. 1963

T. Dean Davidson  
Reg. Surv. No. 4776

STONE MON.  
SW. COR. SW. 1/4  
53.25  
586°30'E - 532.0'

Raymond and  
Kathryn  
Klingler  
1.13 AC. July, 1953

Walter and  
Mabel C.  
Loutenschlager  
2.54 AC. May, 1963

2.5 AC. To be conveyed  
to  
Tri County Enterprises Inc.

STONE MON.  
SE. COR.  
SW. Qtr.  
Sec. 25 T. 8 R. 4