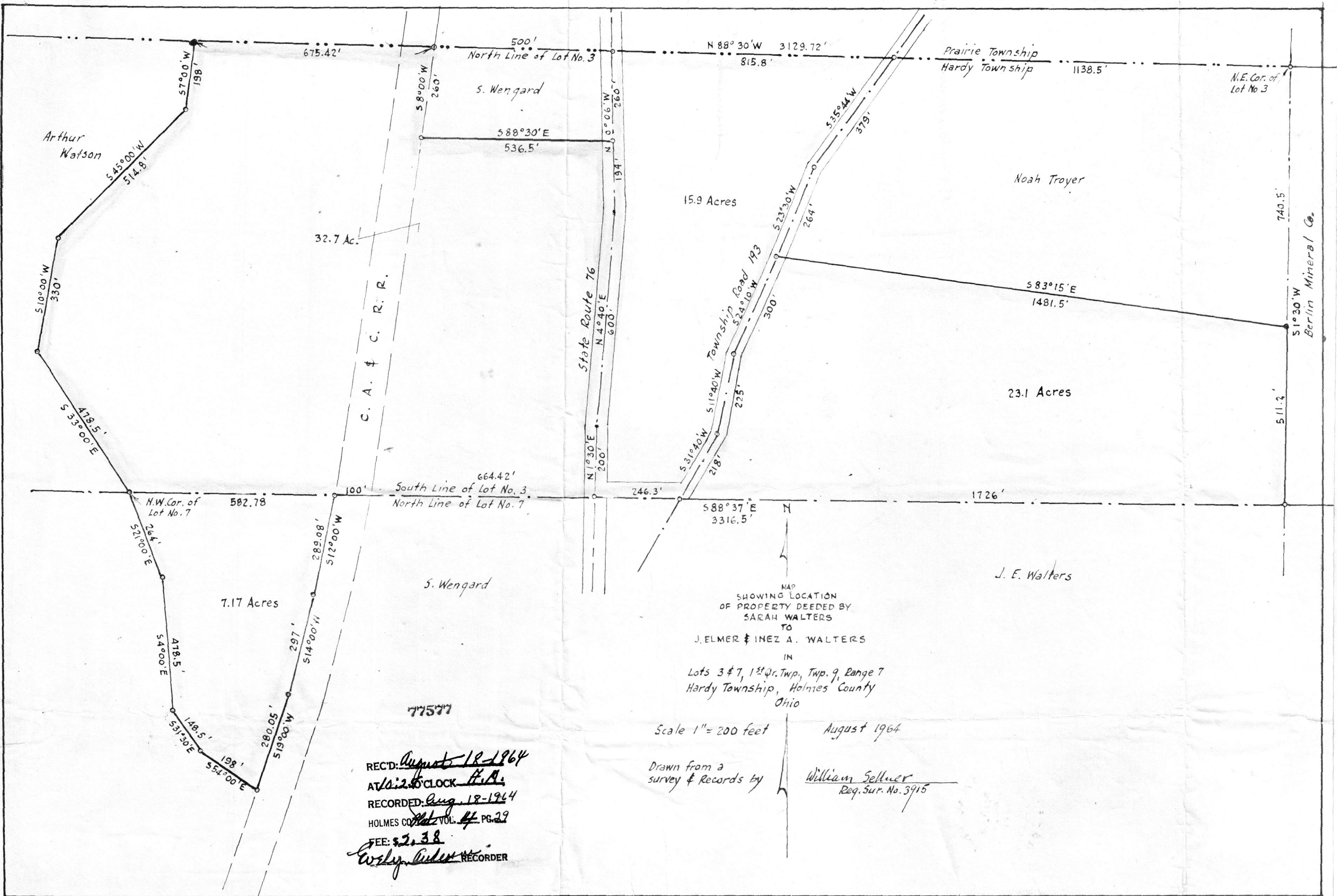


19 X 12 1/2



MAP
SHOWING LOCATION
OF PROPERTY DEEDED BY
SARAH WALTERS
TO
J. ELMER & INEZ A. WALTERS
IN
Lots 3 & 7, 1st Qr. Twp., Twp. 9, Range 7
Hardy Township, Holmes County
Ohio

Scale 1" = 200 feet August 1964

Drawn from a
survey & Records by
William Sellner
Req. Sur. No. 3915

REC'D: August 18-1964
AT 12:25 O'CLOCK H.A.
RECORDED: Aug 18-1964
HOLMES CO. Vol. 44 PG. 29
FEE: \$2.38
Wesley Anderson RECORDER

77577

7.17 Acres

15.9 Acres

23.1 Acres

32.7 Ac.