

14 1/2" x 15"

MARNELIUS MILLER FARM

WALNUT CREEK TWP.

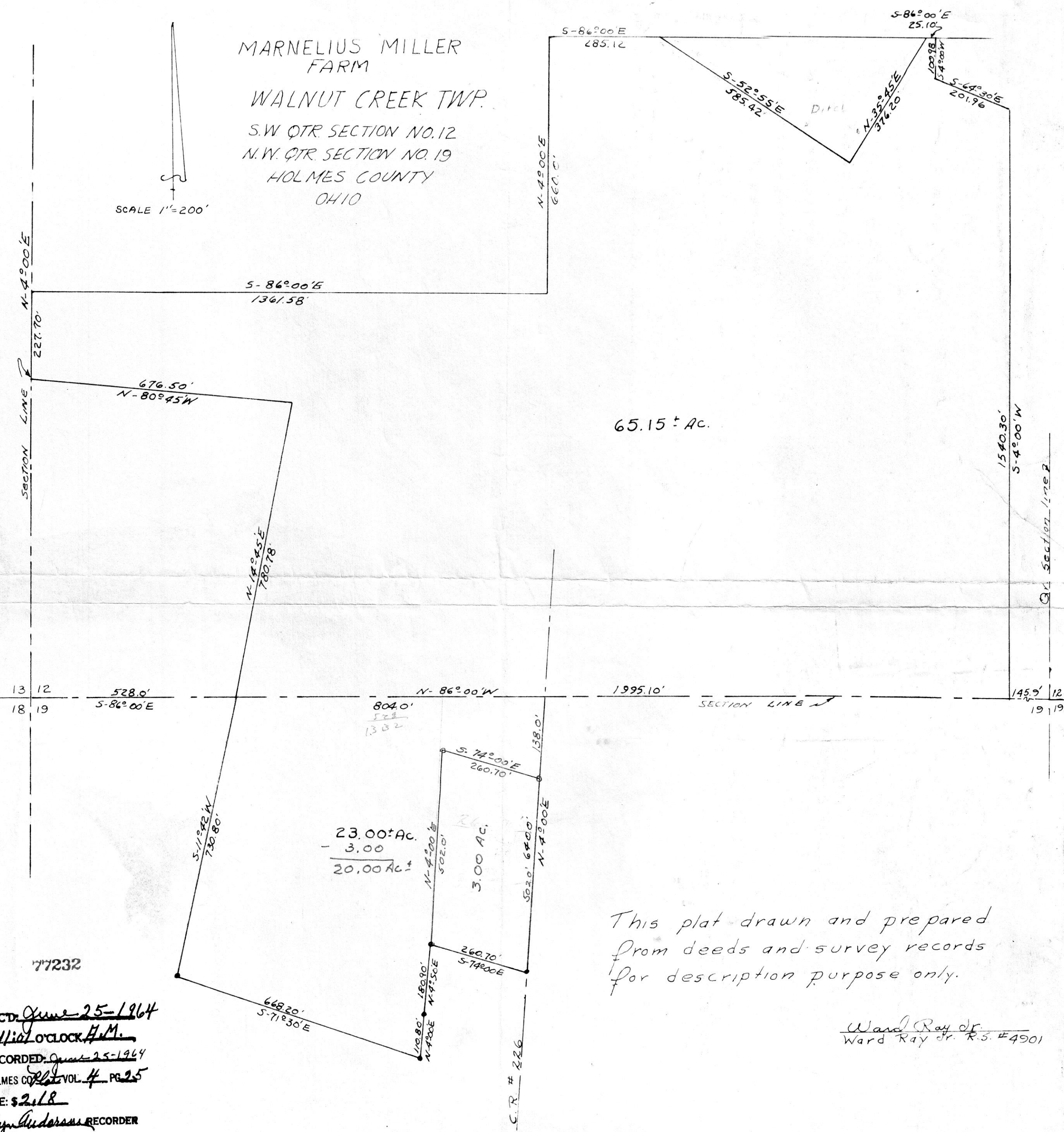
S.W. QTR. SECTION NO. 12

N.W. QTR. SECTION NO. 19

HOLMES COUNTY

OHIO

SCALE 1"=200'



65.15 ± Ac.

23.00 ± Ac.
- 3.00
20.00 Ac. ±

This plat drawn and prepared from deeds and survey records for description purpose only.

Ward Ray Jr.
Ward Ray Jr. R.S. #4901

77232
RECT: June 25-1964
AT 11:07 O'CLOCK A.M.
RECORDED: June 25-1964
HOLMES CO. VOL. 4 PG 25
FEE: \$2.18
Evelyn Anderson RECORDER