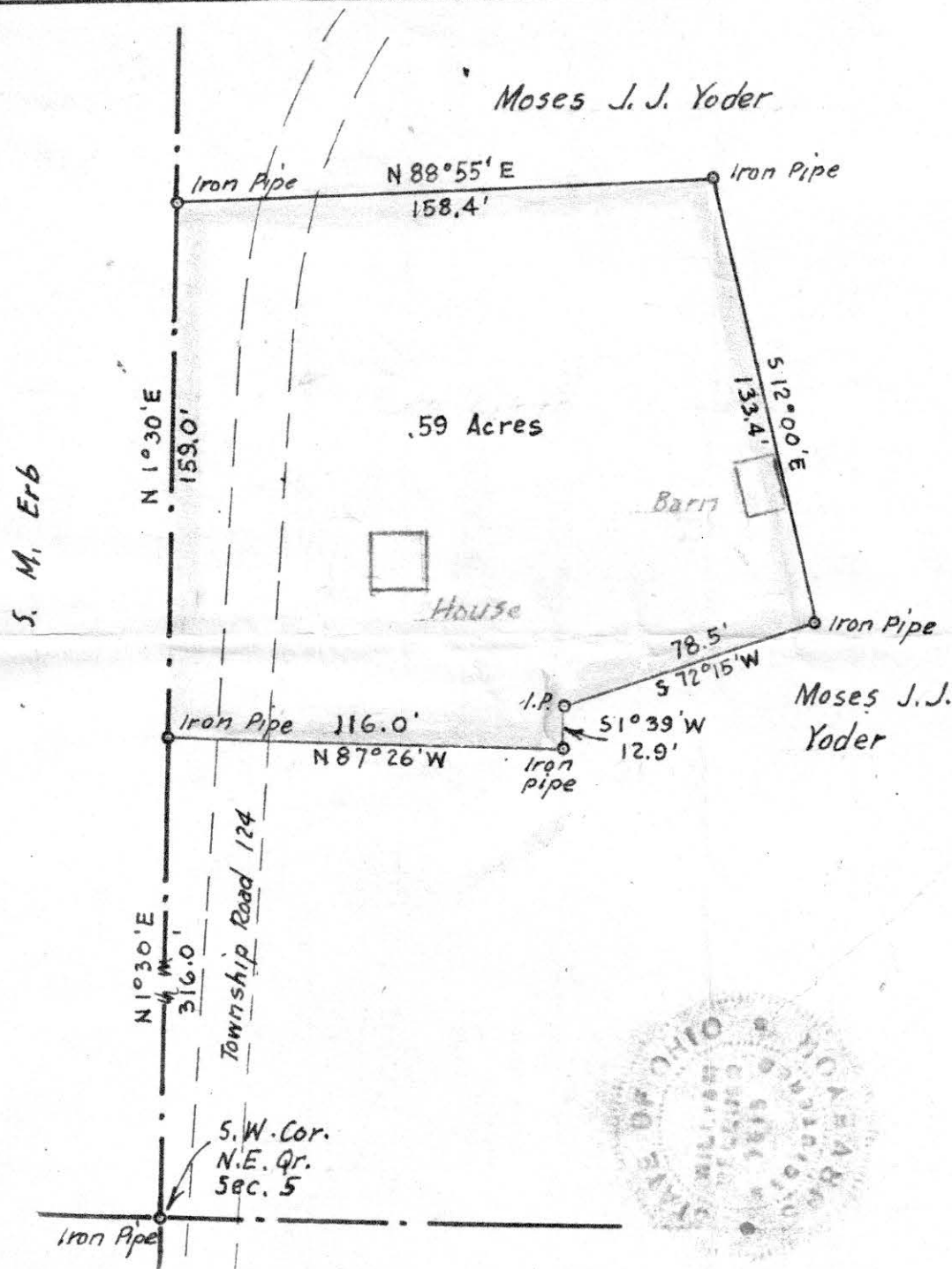


REC'D: March 13, 1964  
AT 3:40 O'CLOCK P.M.  
RECORDED: March 16, 1964  
HOLMES CO. PLAT VOL. 4 PG. 16  
FEE: \$1.00  
Evelyn Anderson RECORDER



MAP  
SHOWING LOCATION  
OF A PARCEL OF LAND  
DEEDED BY  
MOSES J. J. YODER  
TO  
BEN D. MILLER  
IN

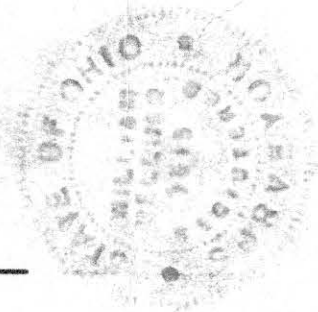
Section 5, Township 8, Range 5  
Clark Township, Holmes County  
Ohio

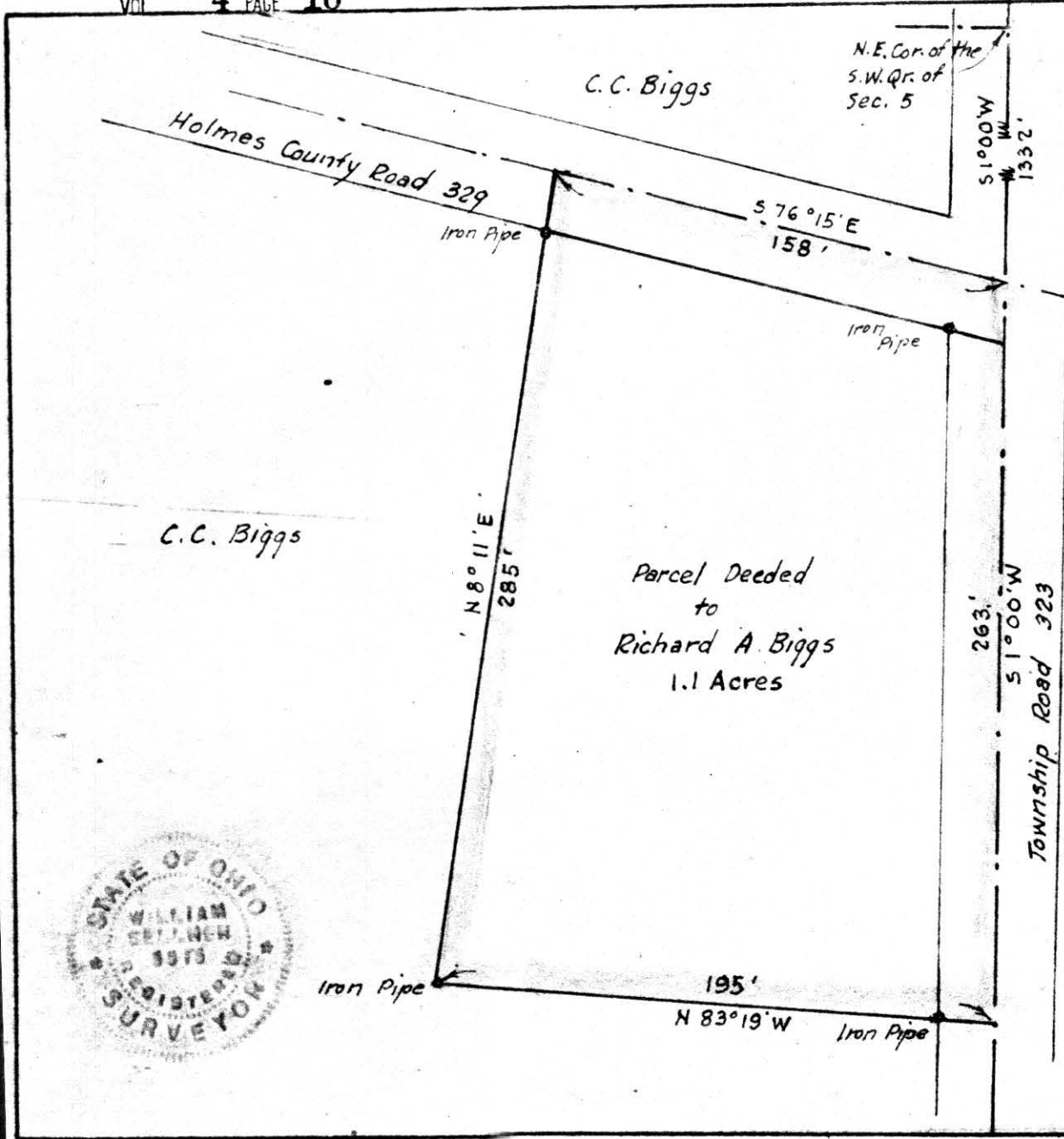
Scale 1" = 50 ft.

Feb. 1964

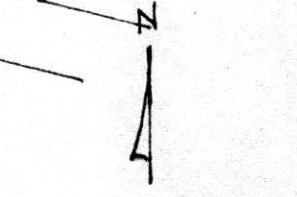
Drawn from  
a survey by

William Sellner  
Reg. Sur. No. 3915





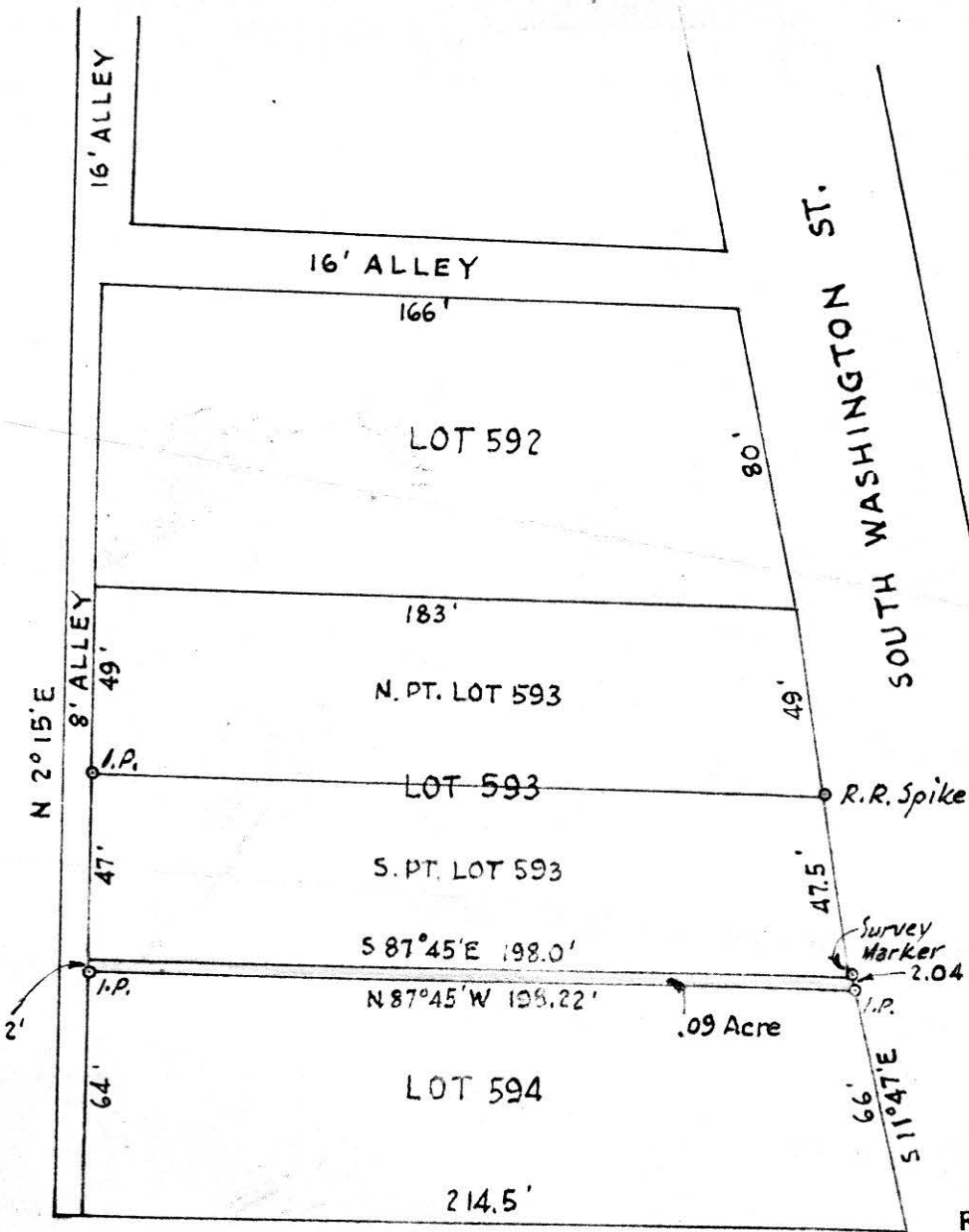
RECT: April 6-1964  
 AT 1:50 O'CLOCK P.M.  
 RECORDED: April 7-1964  
 HOLMES CO. PLAT VOL. 4 PAGE 16  
 FEE: \$ 1.00  
*Carol Anderson* RECORDER



MAP  
 SHOWING LOCATION  
 OF A PARCEL OF LAND  
 DEEDED BY  
 C. C. BIGGS  
 TO  
 RICHARD A. BIGGS  
 IN  
 Section 5, Township 13, Range 13  
 Prairie Township, Holmes County  
 Ohio

Scale 1" = 50 ft.      April 1963  
 Drawn from a  
 survey by William Sellner  
 Reg. Sur. No. 3915





MAP  
SHOWING LOCATION  
OF  
A PART OF LOT 594  
DEEDED TO  
DONALD BUTLER  
IN THE  
*Village of Millersburg*  
*Section 19, Township 9, Range 7*  
*Hardy Township, Holmes County*  
*Ohio*

Scale 1" = 50 ft. Jan. 1964

Drawn from  
a survey by

*William Sellner*  
Reg. Sur. No. 3915

76668



REC'D: *March 24 1964*  
AT *1:20* O'CLOCK *P.M.*  
RECORDED: *March 24 1964*  
HOLMES CO. *Plat* VOL. *4* PG. *16*  
FEE: \$ *1.00*

*Evly. Anderson* RECORDER

