



N.W. Cor. of the  
S.W. Qr. of  
Section 11

EAST  
W.M.  
2072.4

75801

Lake View Addition

REC'D: November 5-1963

AT 11:25 CLOCK A.M.

RECORDED: November 6-1963

HOLMES CO. VOL. 4 PG. 9

SEE: 1/2

*E. Metzler* RECORDER

E. Metzler

S 15° 00' W  
557.1'

S 88° 15' E

277.9'

N 8° 00' E  
316.8'

.75  
Ac.

1.86  
Ac.

S 15° 00' W  
533.1'

N 89° 30' E

88.3'

3.49 Acres

18  
Ac.

20  
Ac.

N 18° 00' E  
411.18'

50  
Ac.

51.9'

51.9'

274.8'

N 73° 00' W

R. F. Kieffaber

284.7'  
S 18° 00' W

A.M.  
Nigh

34  
Ac.

34  
Ac.

Mullet

MAP  
SHOWING LOCATION  
OF A TRACT OF LAND  
DECEDED BY

A. M. NIGH  
TO  
CHURCH OF CHRIST  
IN

Section 11, Township 9, Range 7  
Hardy Township, Holmes County  
Ohio

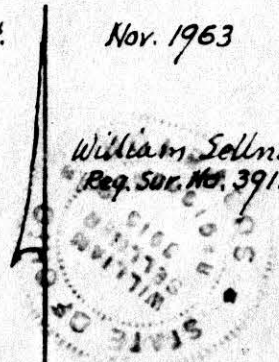


Scale 1" = 100 ft.

Nov. 1963

Drawn from a  
survey & records by

William Sellner  
Reg. Sur. No. 3915



N 73° 00' W 51.9' 51.9'  
Old State Route 39



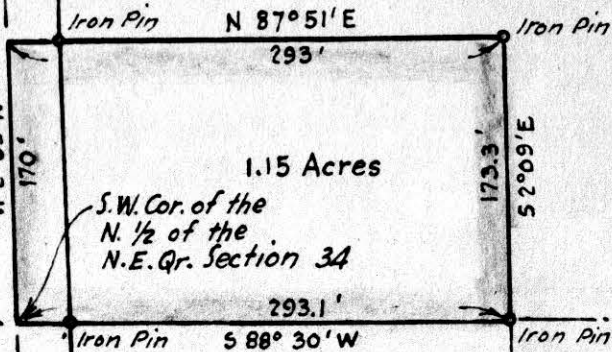
75804

REC'D: *November 5-1963*  
AT *2:55* O'CLOCK - *P.M.*  
RECORDED: *November 6-1963*  
HOLMES CO. *Plat* VOL. *4* - PG. *9*  
FEE: \$ *1.00*

*Evelyn Anderson* RECORDER

*Reuben  
R.  
Miller*

*Albert Swartzentruber*



MAP  
SHOWING LOCATION  
OF A PARCEL OF LAND  
DECEDED BY  
ALBERT SWARTZENTRUBER  
TO

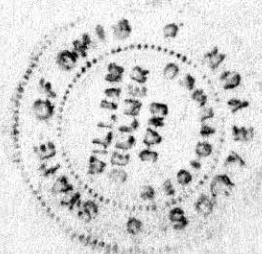
IN  
Section 34, Township 14, Range 13  
Prairie Township, Holmes County  
Ohio

Scale 1" = 100 ft.

*Aug. 1961*

Drawn from a  
survey by

*William Sellner*  
Reg. Sur. No. 3915



*No Buildings*