

75110

REC'D: July 15, 1963
AT 9:15 O'CLOCK A.M.
RECORDED: July 15, 1963
HOLMES CO. Plat VOL 4 PG. 1
FEE: \$1.60

Evelyn Anderson, RECORDER

MAP
SHOWING LOCATION
OF TWO PARCELS OF LAND
ON THE
R.M. CLOSE PROPERTY
BEING A PART OF
Outlots 109 & 31
IN THE
Village of Millersburg
Ohio

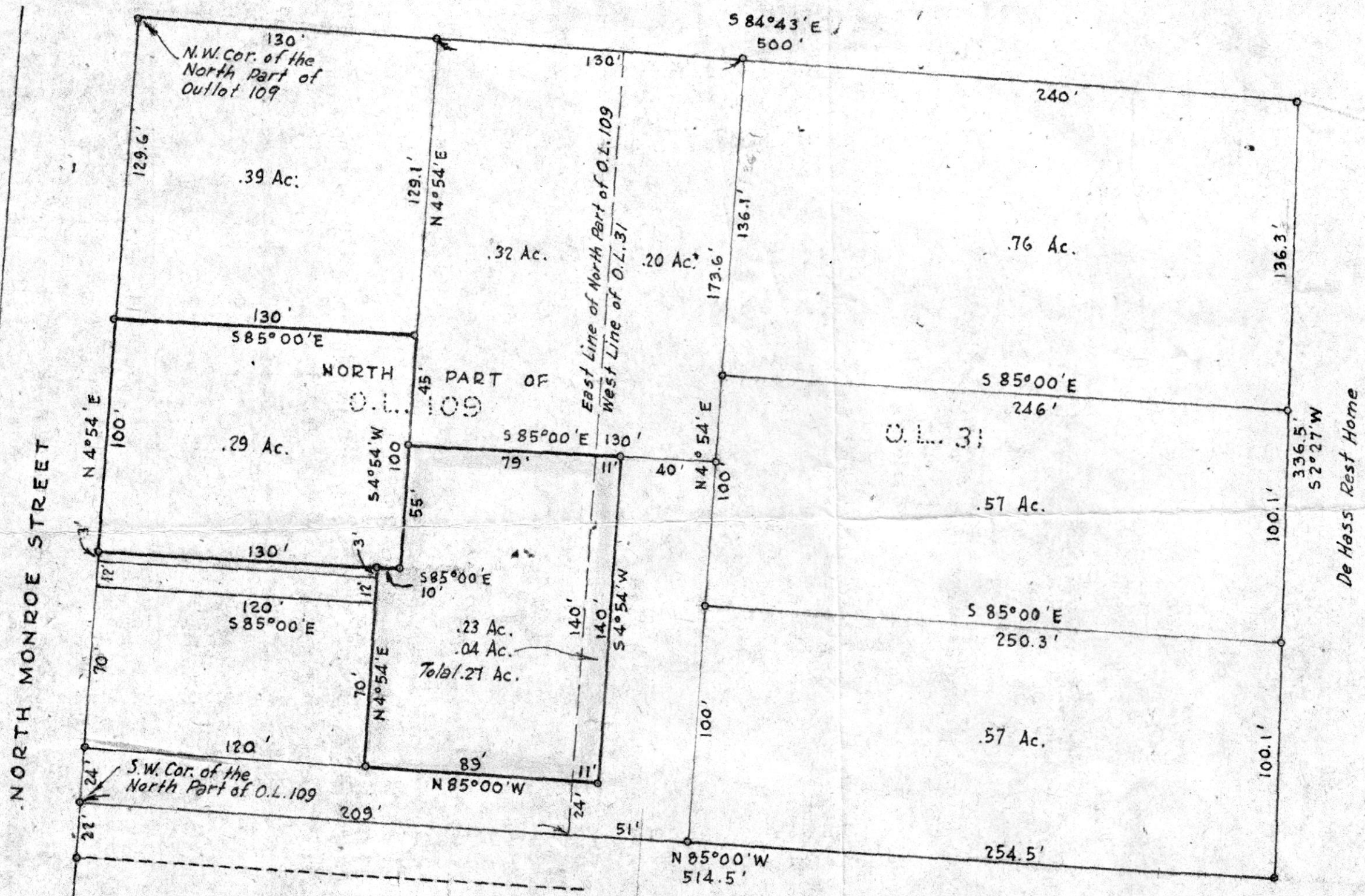
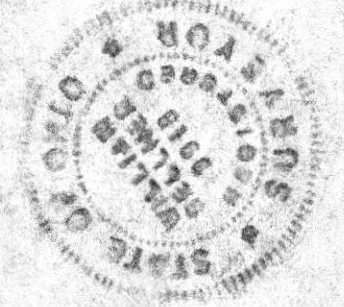
Scale 1" = 50 ft.

April 1963

Drawn from
a survey by

William Sellner
Reg. Sur. No. 3915

Indicates
Iron Pipe



NORTH MONROE STREET

N.W. Cor. of the
North Part of
Outlot 109

.39 Ac.

.32 Ac.

.20 Ac.

.76 Ac.

.29 Ac.

O.L. 31

.57 Ac.

.23 Ac.
.04 Ac.
Total .27 Ac.

.57 Ac.

.57 Ac.

S.W. Cor. of the
North Part of O.L. 109

SOUTH PART OF
O.L. 109

De Hass Rest Home