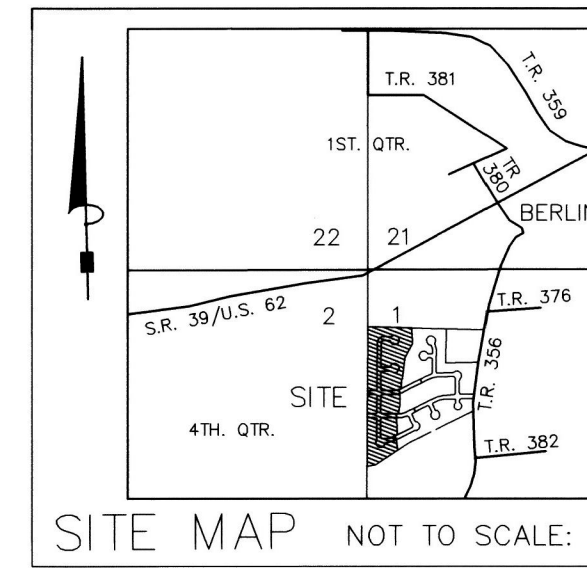


Exhibit A

# ROAD DEDICATION PLAT

## HAWK'S LANDING SUBDIVISION PHASE 5

(P. 2-587)



REFERENCES:  
O.R. VOL. 178 PAGE 1310  
PLAT VOL. 2 PAGE 446  
PLAT VOL. 19 PAGE 665  
PLAT VOL. 19 PAGE 2365  
PLAT VOL. 19 PAGE 2403  
PLAT VOL. 2 PAGE 552  
PLAT VOL. 19 PAGE 2383  
PLAT VOL. 19 PAGE 1525  
PLAT VOL. 2 PAGE 587

BEARINGS FROM  
PLAT VOL. 2 PAGE 552

CURVE	DELTA	RADIUS	CHORD	CHORD ARC	TANGENT
C1	90°00'00"	20.00'	N 45°25'26" E 28.28'	31.42'	20.00'
C2	90°00'00"	20.00'	N 44°34'34" W 28.28'	31.42'	20.00'
C3	90°00'00"	20.00'	N 45°25'26" E 28.28'	31.42'	20.00'
C4	91°04'34"	70.00'	N 45°57'43" E 99.92'	111.27'	71.33'
C5	141°40'43"	60.00'	S 65°51'01" E 113.35'	148.37'	172.68'
C6	166°55'01"	60.00'	S 88°26'51" W 119.22'	174.79'	523.24'
C7	91°04'34"	20.00'	S 45°57'43" W 28.55'	31.79'	20.38'
C8	90°00'00"	20.00'	S 44°34'34" E 28.28'	31.42'	20.00'
C9	170°24'20"	60.00'	S 84°46'45" E 119.58'	178.45'	714.93'
C10	138°11'24"	60.00'	S 69°31'07" W 112.10'	144.71'	157.08'
C11	90°00'00"	20.00'	S 45°25'26" W 28.28'	31.42'	20.00'
C12	90°00'00"	20.00'	S 44°34'34" E 28.28'	31.42'	20.00'
C13	20°16'59"	224.11'	N 80°16'56" E 78.92'	79.34'	40.09'
C14	20°16'59"	274.11'	S 80°16'56" W 96.53'	97.04'	49.03'
C15	90°00'00"	20.00'	S 45°25'26" W 28.28'	31.42'	20.00'
C16	90°00'00"	20.00'	S 44°34'34" E 28.28'	31.42'	20.00'
C17	90°00'00"	20.00'	S 45°25'26" W 28.28'	31.42'	20.00'
C18	90°00'00"	20.00'	S 44°34'34" E 28.28'	31.42'	20.00'
C19	26°33'25"	224.11'	N 77°08'43" E 102.95'	103.88'	52.89'
C20	25°56'30"	274.11'	S 76°50'16" W 123.05'	124.11'	63.14'
C21	47°39'46"	18.00'	S 31°23'38" W 14.55'	14.97'	7.95'
C22	112°45'40"	60.00'	S 63°56'35" W 99.93'	118.08'	90.24'
C23	93°39'27"	60.00'	N 12°50'52" W 87.52'	98.08'	63.96'
C24	90°00'00"	20.00'	N 44°34'35" W 28.28'	31.42'	20.00'
C25	26°33'25"	249.11'	S 77°08'43" W 114.43'	115.46'	58.79'
C26	20°16'59"	249.11'	N 80°16'56" E 87.73'	88.19'	44.56'
C27	91°04'34"	45.00'	N 45°57'43" E 64.23'	71.53'	45.85'

3.540 ACRES IN ROAD

### OWNERS DEDICATION

Be it remembered that we, the undersigned, owners of the land shown hereon, do hereby acknowledge this plat to be our free act and deed, and dedicate the land shown to public use forever.

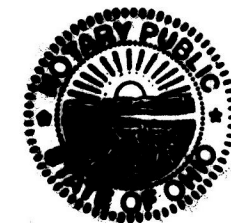
OWNER: *John Henry Troyer*  
WITNESS: *Stacy M Beechey*  
*John Henry Troyer*  
Authorized Member of  
East Holmes Development, Ltd.

STATE OF OHIO  
COUNTY OF HOLMES No oath or affirmation was administered.

Before me, A. Renee Stutzman, a notary public in said county and state, personally appeared the above who acknowledged that they did sign the foregoing instrument and that the same is their own free act and deed.

In testimony whereof, I hereby set my hand and seal this 11th day of July, 2022.

Notary Public: A. Renee Stutzman  
My Commission Expires: Oct. 9, 2025



### COMMISSIONERS APPROVAL

We, the Holmes County Commissioners, hereby accept the dedication of the road shown hereon.  
Approved this 6th day of September 2022

Holmes County Commissioners Res. # 09-08-22-1

*Joe Mills*  
*Raymond Taylor*  
*David Hall*

I certify this survey to be correct to the best of my knowledge.

*Donald C. Baker*  
DONALD C. BAKER  
MAY 4, 2022  
P.S. 6938

BAKER SURVEYING, LLC  
138 N. CLAY ST.  
MILLERSBURG, OHIO 44654  
PH. 330-674-4788  
EMAIL: bakersurveying@gmail.com

0 60 120  
SCALE: 1"=60'  
COMP. WORKS/S-484-18  
DATE: APRIL 19, 2022 S-222-22

BERLIN TOWNSHIP  
4TH. QTR., LOT 1  
T-9 N; R-6 W  
HOLMES COUNTY, OHIO

5/8" REBAR FOUND  
UNLESS OTHERWISE NOTED

TRANSFER NOT NECESSARY  
DATE September 9, 2022  
AUDITOR Jackie McKee