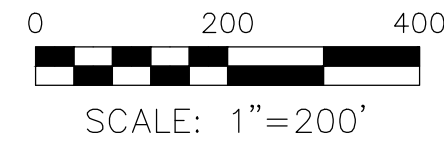


RIPLEY TOWNSHIP
N.E. & N.W. QTRS. SECTION 27
T-18 N; R-14 W
HOLMES COUNTY, OHIO

SURVEYED FOR: KAUFMAN REALTY



- STONE FOUND
- ▲ R.R. SPIKE FOUND
- 5/8" REBAR FOUND UNLESS OTHERWISE NOTED
- 5/8" REBAR SET WITH I.D. CAP I.D. CAP MARKED "BAKER SURVEYING LLC"

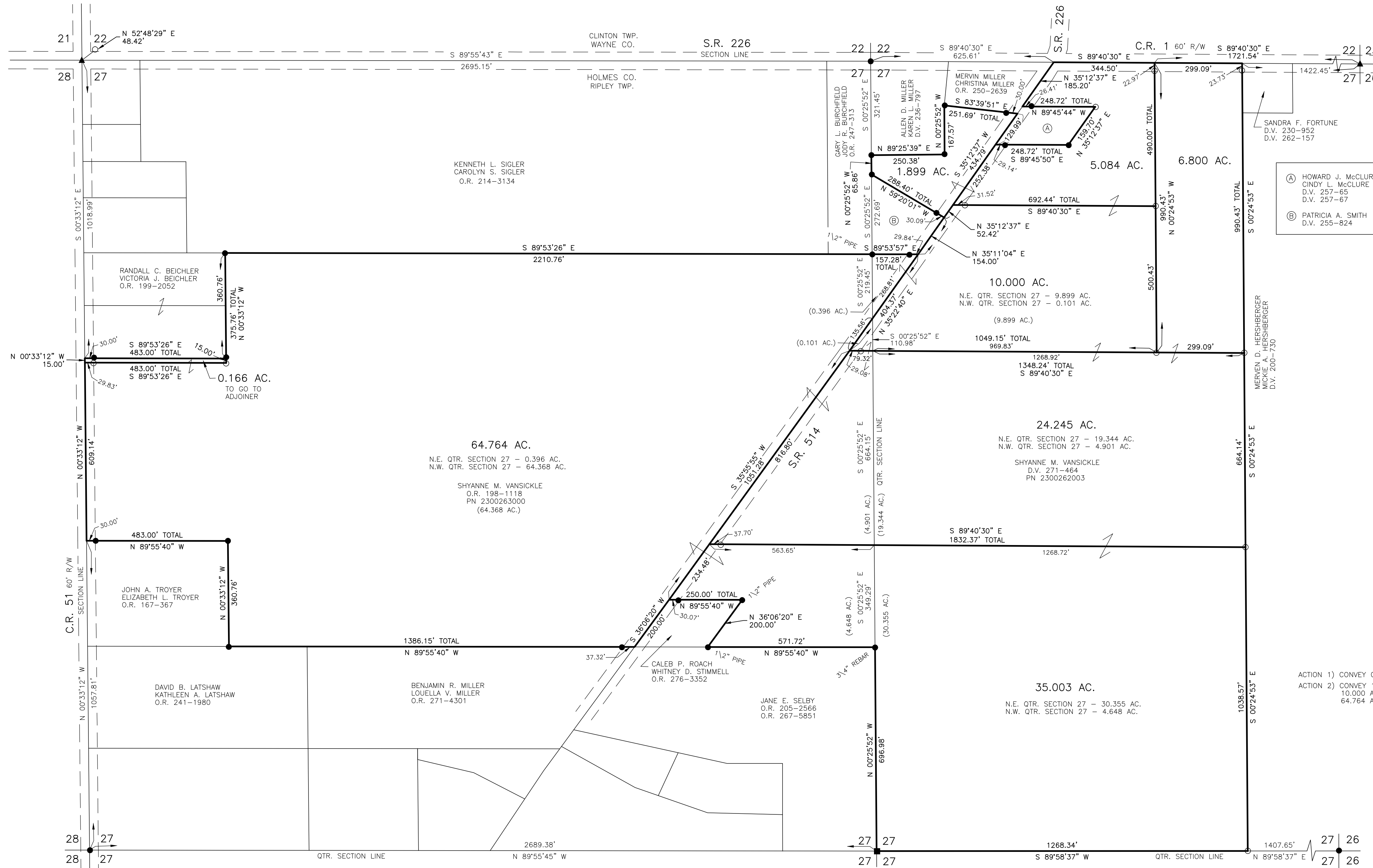
REFERENCES

DEED VOL. 271 PAGE 464
DEED VOL. 200 PAGE 730
DEED VOL. 257 PAGE 67
DEED VOL. 255 PAGE 824
O.R. VOL. 198 PAGE 1118
O.R. VOL. 214 PAGE 3134
O.R. VOL. 271 PAGE 4301
O.R. VOL. 267 PAGE 5851
PLAT VOL. 16 PAGE 81
PLAT VOL. 19 PAGE 4351
PLAT VOL. 10 PAGE 840

BASIS OF BEARINGS FROM OHIO STATE PLANE
COORDINATE SYSTEM, NORTH ZONE,
N.A.D. 83, 2011 ADJUSTMENT

20220001641
B: 2 P: 626
FILED FOR RECORD IN
HOLMES COUNTY, OH
ANITA HALL, COUNTY RECORDER
04/07/2022 10:56 AM
PLAT LARGE : 86.40
PAGES : 1

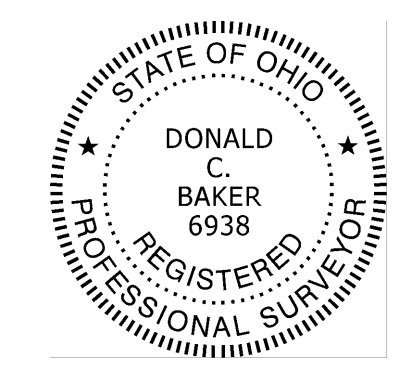
CRV 281 PG 770
CRV 281 PG 772



- Ⓐ HOWARD J. MCCLURE
CINDY L. MCCLURE
D.V. 257-65
D.V. 257-67
- Ⓑ PATRICIA A. SMITH
D.V. 255-824

MASTER PLAT

- ACTION 1) CONVEY 0.166 ACRES TO ADJOINER
- ACTION 2) CONVEY 1.899 ACRES, 5.084 ACRES, 6.800 ACRES,
10,000 ACRES, 24.245 ACRES, 35.003 ACRES, AND
64.764 ACRES FROM SHYANNE M. VANSICKLE TO THEMSELVES



I CERTIFY THIS SURVEY TO BE CORRECT
TO THE BEST OF MY KNOWLEDGE.
Donald C. Baker
DONALD C. BAKER P.S. 6938
DATE: FEB 28, 2022
VJD/TAB
FILE NAME: WORKS\5-711-21\CNK

APPROVED FOR TRANSFER ONLY
NO SUBDIVISION PLAT REQUIRED
(O.R.C. 711.001 & 711.131)
Lot(s) not for building unless
approved by Board of Health
HOLMES CO. PLANNING COMMISSION
By TS Date 4/5/2022

Plat Approved
Holmes County Map Office
4/5/2022 Rg

BAKER SURVEYING, LLC
138 N. CLAY STREET
MILLERSBURG, OHIO 44654
PH. 330-674-4788
EMAIL: bakersurveying@gmail.com