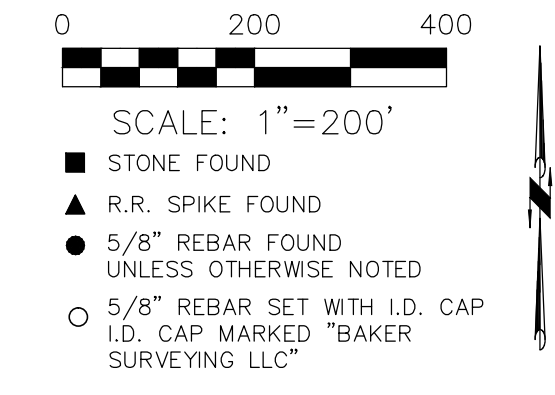


WASHINGTON TOWNSHIP
 S.W. QTR. SECTION 18
 T-19 N; R-15 W
 KNOX TOWNSHIP
 N.E. & N.W. QTRS. SECTION 19
 N.E., N.W., S.E., & S.W. QTRS. SECTION 20
 T-19 N; R-15 W
 HOLMES COUNTY, OHIO

SURVEYED FOR: HOLMES COUNTY ENGINEER



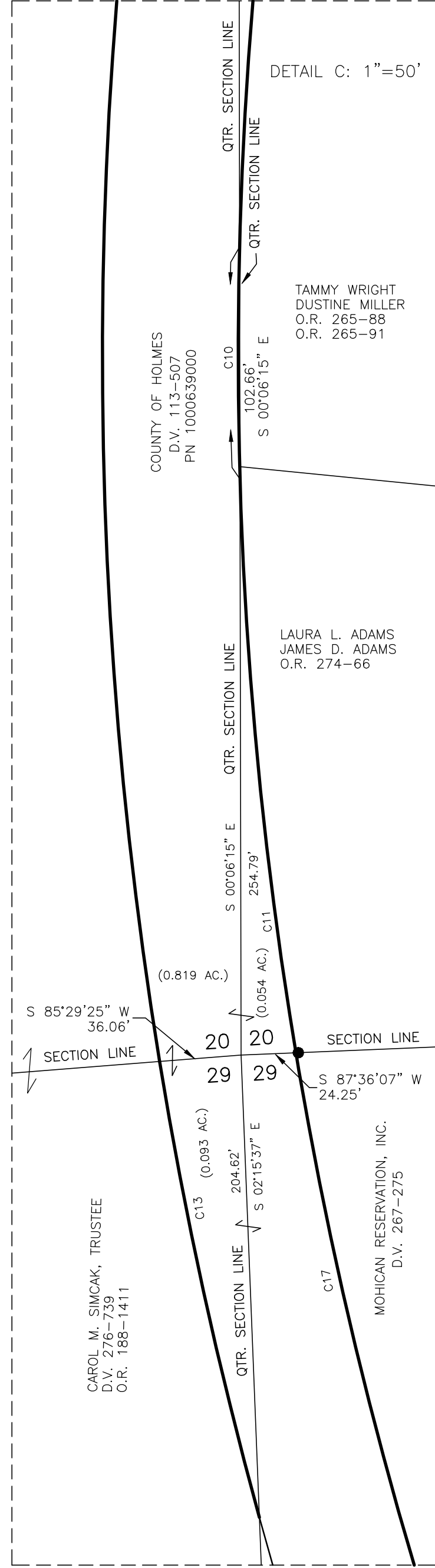
0.540 ACRES
 WASHINGTON TWP., S.W. QTR. SECTION 18 - 0.540 AC.
 22.555 ACRES
 KNOX TWP., N.W. QTR. SECTION 19 - 3.128 AC.
 KNOX TWP., N.E. QTR. SECTION 19 - 4.442 AC.
 SECTION 19 TOTAL - 7.570 AC.
 KNOX TWP., N.W. QTR. SECTION 20 - 3.932 AC.
 KNOX TWP., N.E. QTR. SECTION 20 - 2.583 AC.
 KNOX TWP., S.E. QTR. SECTION 20 - 2.929 AC.
 KNOX TWP., S.W. QTR. SECTION 20 - 0.819 AC.
 SECTION 20 TOTAL - 10.263 AC.
 KNOX TWP., N.W. QTR. SECTION 29 - 0.093 AC.
 KNOX TWP., N.E. QTR. SECTION 29 - 3.750 AC.
 KNOX TWP., S.E. QTR. SECTION 29 - 0.879 AC.
 SECTION 29 TOTAL - 4.722 AC.
 23.095 ACRES TOTAL

- REFERENCES
- DEED VOL. 218 PAGE 968
 - DEED VOL. 273 PAGE 215
 - DEED VOL. 267 PAGE 275
 - DEED VOL. 229 PAGE 975
 - DEED VOL. 113 PAGE 507
 - O.R. VOL. 274 PAGE 1756
 - O.R. VOL. 197 PAGE 3197
 - O.R. VOL. 223 PAGE 1048
 - O.R. VOL. 274 PAGE 3513
 - O.R. VOL. 257 PAGE 4143
 - O.R. VOL. 188 PAGE 1411
 - O.R. VOL. 225 PAGE 3220
 - O.R. VOL. 261 PAGE 6546
 - O.R. VOL. 266 PAGE 3138
 - O.R. VOL. 246 PAGE 3264
 - O.R. VOL. 274 PAGE 1777
 - O.R. VOL. 265 PAGE 91
 - O.R. VOL. 269 PAGE 3551
 - O.R. VOL. 274 PAGE 66
 - O.R. VOL. 124 PAGE 102
 - O.R. VOL. 247 PAGE 2692
 - O.R. VOL. 274 PAGE 1724
 - O.R. VOL. 274 PAGE 1728
 - O.R. VOL. 204 PAGE 2777
 - PLAT VOL. 19 PAGE 1405
 - PLAT VOL. 16 PAGE 423
 - PLAT VOL. 10 PAGE 655
 - PLAT VOL. 19 PAGE 1380
 - PLAT VOL. 19 PAGE 3714
 - PLAT VOL. 19 PAGE 3206
 - PLAT VOL. 19 PAGE 3052
 - PLAT VOL. 19 PAGE 1783
 - PLAT VOL. 8 PAGE 255
 - PLAT VOL. 19 PAGE 1856
 - PLAT VOL. 19 PAGE 4067
 - PLAT VOL. 19 PAGE 4245
 - PLAT VOL. 19 PAGE 4068
 - PLAT VOL. 19 PAGE 4069
 - PLAT VOL. 19 PAGE 3325
 - PLAT VOL. 19 PAGE 4194
 - PLAT VOL. 2 PAGE 229
 - PLAT VOL. 10 PAGE 473
 - PLAT VOL. 12 PAGE 911
 - PLAT VOL. 13 PAGE 28
 - PLAT VOL. 19 PAGE 1838
 - PLAT VOL. 18 PAGE 612
 - PLAT VOL. 19 PAGE 1397
 - PLAT VOL. 11 PAGE 1
 - PLAT VOL. 13 PAGE 27
 - PLAT VOL. 12 PAGE 703
 - PLAT VOL. 19 PAGE 1126
 - PLAT VOL. 9 PAGE 194
 - PLAT VOL. 2 PAGE 606
 - PLAT VOL. 3 PAGE 43B
 - PLAT VOL. 13 PAGE 26
 - PLAT VOL. 5 PAGE 83
 - PLAT VOL. 7 PAGE 407
 - PLAT VOL. 3 PAGE 11B
 - PLAT VOL. 19 PAGE 3552
 - PLAT VOL. 19 PAGE 4180
 - PLAT VOL. 14 PAGE 86
 - PLAT VOL. 14 PAGE 701
 - PLAT VOL. 16 PAGE 370
 - PLAT VOL. 19 PAGE 690
- UNRECORDED SURVEY BY JAMIE D. DARR DATED MARCH 25, 2002
 ASHLAND CO. SURVEY BY JAMES E. KENYON DATED JUNE 18, 2011
 BASIS OF BEARINGS FROM OHIO STATE PLANE
 COORDINATE SYSTEM, NORTH ZONE, N.A.D. 83

CURVE	DELTA	RADIUS	CHORD BEARING	CHORD	ARC	TANGENT
C1	3°40'02"	5700.00'	S 73°15'38" E	364.77'	364.83'	182.48'
C2	2°04'27"	5760.00'	N 72°27'51" W	208.51'	208.52'	104.27'
C3	13°35'10"	5700.00'	S 81°53'14" E	1348.43'	1351.61'	678.99'
C4	15°10'46"	5760.00'	N 81°05'27" W	1521.53'	1525.99'	767.49'
C5	56°17'41"	743.75'	N 89°43'23" E	701.72'	730.76'	397.92'
C6	58°59'02"	683.75'	N 88°55'56" E	673.22'	703.90'	386.72'
C7	33°22'04"	743.75'	S 45°26'44" E	427.05'	433.14'	222.91'
C8	30°40'43"	683.75'	N 44°06'04" W	361.75'	366.11'	187.56'
C9	10°56'45"	1880.00'	S 06°55'59" W	358.61'	359.16'	180.13'
C10	3°07'44"	1880.00'	S 00°06'15" E	102.66'	102.67'	51.35'
C11	7°46'36"	1880.00'	S 05°33'25" E	254.97'	255.17'	127.78'
C12	21°40'19"	1940.00'	N 01°34'12" E	729.43'	733.80'	371.34'
C13	6°05'53"	1940.00'	N 12°18'54" W	206.38'	206.48'	103.34'
C14	11°51'35"	1940.00'	N 21°17'38" W	400.85'	401.56'	201.50'
C15	7°18'29"	1462.00'	S 76°41'28" E	185.50'	185.63'	92.94'
C16	12°18'49"	1402.00'	N 79°12'38" W	300.73'	301.31'	151.24'
C17	17°46'42"	1880.00'	S 18°20'04" E	581.01'	583.34'	294.03'

TOTAL CURVE
 A=1341.84'
 R=1940.00'
 D=39°37'47"
 B=N 07°24'32" W
 C=1515.25'
 T=699.01'

TOTAL CURVE
 A=1300.34'
 R=1880.00'
 D=39°37'47"
 B=S 07°24'32" E
 C=1274.57'
 T=677.39'



I CERTIFY THIS SURVEY TO BE CORRECT TO THE BEST OF MY KNOWLEDGE.
 A.L.G.
 AARON L. GERBER P.S. 8379
 DATE: FEBRUARY 18, 2021
 ALG\TAB\VID
 FILE NAME: WORKS\S-5-21\ALG\CNK

APPROVED FOR TRANSFER ONLY
 NO SUBDIVISION PLAT REQUIRED
 (O.R.C. 711.001 & 711.131)
 (not) not for building unless approved by Board of Health
 HOLMES CO. PLANNING COMMISSION
 By: AO Date: 7/13/2021

Plat Approved
 Holmes County Map Office
 7/13/2021 BH

BAKER SURVEYING, LLC
 138 N. CLAY STREET
 MILLERSBURG, OHIO 44654
 PH. 330-674-4788
 EMAIL: bakersurveying@gmail.com