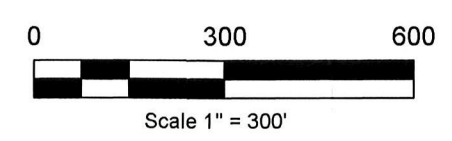


ORV 269 Pgs 6869, 6878, 6883

Killbuck Township  
 N.W. Qtr. Section 3  
 S.W. Qtr. Section 3  
 N.E. Qtr. Section 3  
 N.W. Qtr. Section 8

Richland Township  
 S.E. Qtr. Section 4  
 T-8 N; R-8 W  
 Holmes County, Ohio

SURVEYED FOR: McDowell Farms Ltd.



- (A) 2.486 Acres  
Robert J. and Toni L. McDowell  
O.R. Vol. 191 Page 42  
PPN 0800397003
- (B) Lamar Weaver  
O.R. Vol. 264 Page 3923  
PPN 2100521001
- (C) Jason A. Zaugg  
O.R. Vol. 264 Page 4803  
PPN 2100521000
- (D) Nathan G. Dixon  
Alora K. Dixon  
O.R. Vol. 264 Page 8001  
PPN 0800067001
- (E) The Board of Commissioners of  
the Holmes County Park District  
O.R. Vol. 191 Page 1347  
PPN 0800836001
- (F) Steven R. and Margaret J. Ellis  
Deed Vol. 278 Page 460  
PPN 0800418000

- Stone Found
- 1/2" Pipe Found
- 1/2" Pinch Top Pipe Found
- ▲ R.R. Spk. Found
- 5/8" Rebar Found unless noted
- 5/8" Capped Pin Found "Baker"
- 5/8" Capped Pin Set "Galbraith"
- Point

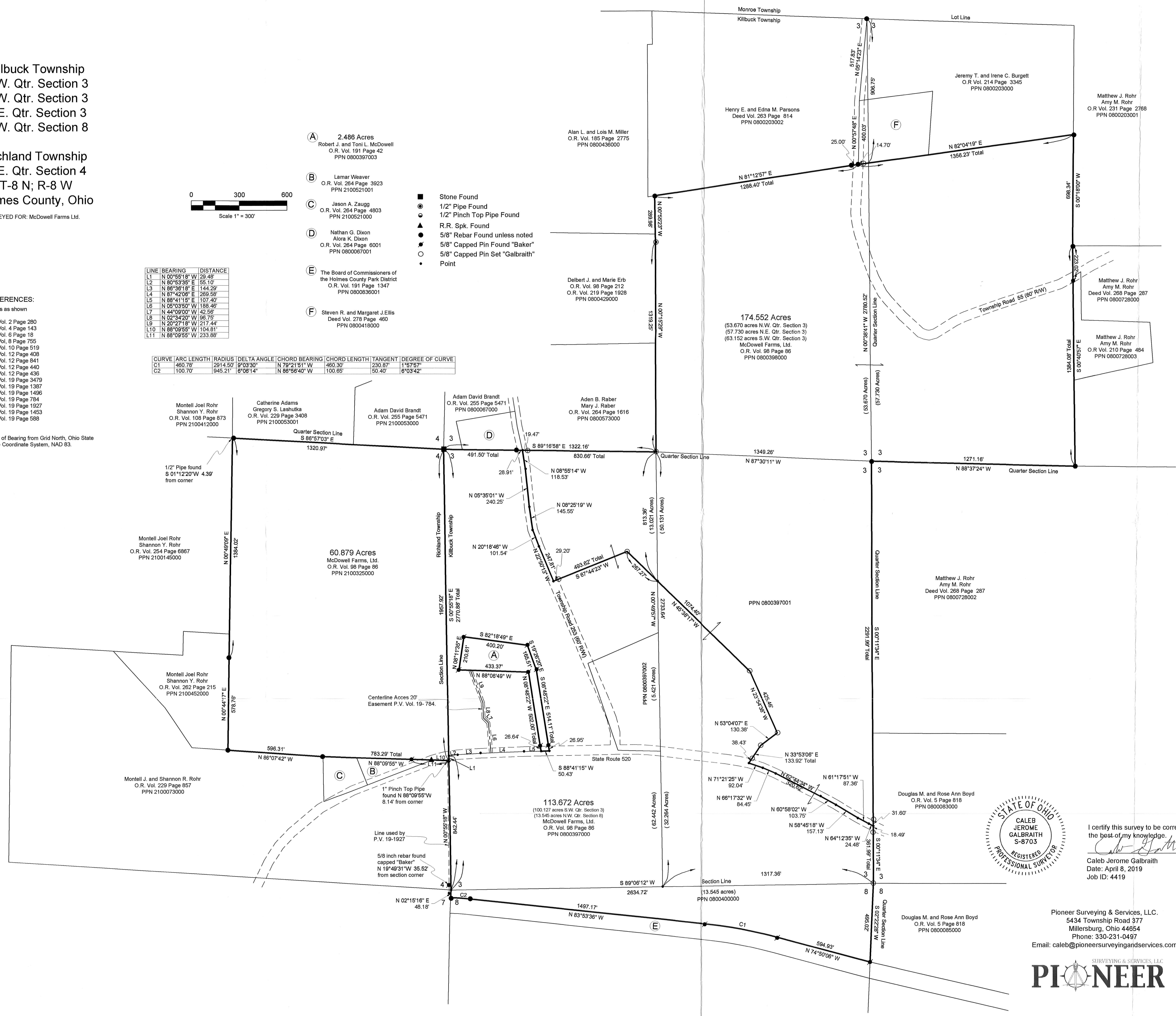
LINE	BEARING	DISTANCE
L1	N 00°55'18" W	29.45'
L2	N 80°53'35" E	55.10'
L3	N 88°36'18" E	144.23'
L4	N 87°42'09" E	269.58'
L5	N 88°41'15" E	107.40'
L6	N 05°03'50" W	1198.46'
L7	N 44°09'00" W	42.56'
L8	N 02°34'20" W	98.75'
L9	N 20°27'18" W	217.44'
L10	N 88°09'55" W	104.81'
L11	N 88°09'55" W	233.88'

CURVE	ARC LENGTH	RADIUS	DELTA ANGLE	CHORD BEARING	CHORD LENGTH	TANGENT	DEGREE OF CURVE
C1	460.78	2914.50'	9°03'30"	N 79°21'51" W	460.30'	230.87'	1°57'57"
C2	100.70	845.21'	6°08'14"	N 88°56'40" W	100.65'	50.40'	6°03'42"

REFERENCES:

- Deeds as shown  
 Plat Vol. 2 Page 280  
 Plat Vol. 4 Page 143  
 Plat Vol. 6 Page 18  
 Plat Vol. 8 Page 755  
 Plat Vol. 10 Page 519  
 Plat Vol. 12 Page 408  
 Plat Vol. 12 Page 841  
 Plat Vol. 12 Page 440  
 Plat Vol. 12 Page 436  
 Plat Vol. 19 Page 3479  
 Plat Vol. 19 Page 1387  
 Plat Vol. 19 Page 1496  
 Plat Vol. 19 Page 784  
 Plat Vol. 19 Page 1527  
 Plat Vol. 19 Page 1453  
 Plat Vol. 19 Page 588

Basis of Bearing from Grid North, Ohio State  
 Plane Coordinate System, NAD 83.



APPROVED FOR TRANSMISSION ONLY  
 NO SUBDIVISION PLAT REQUIRED  
 (O.R.C. 711.031 & 711.131)  
 (L18) not for building unless  
 approved by Board of Health.  
 HOLMES CO. PLANNING COMMISSION  
 By: [Signature] Date: 11/7/19



I certify this survey to be correct to  
 the best of my knowledge.  
 [Signature]  
 Caleb Jerome Galbraith  
 Date: April 8, 2019  
 Job ID: 4419

Pioneer Surveying & Services, LLC.  
 5434 Township Road 377  
 Millersburg, Ohio 44654  
 Phone: 330-231-0497  
 Email: caleb@pioneersurveyingandservices.com



PLAT APPROVED

11/6/2019 JP