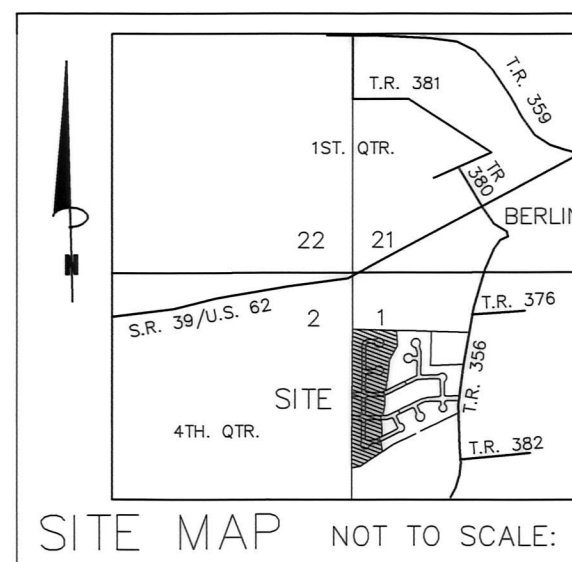


# HAWK'S LANDING SUBDIVISION PHASE 5 (FINAL)

20190005001  
B: 2 P: 587  
FILED FOR RECORD IN  
HOLMES COUNTY, OH  
ANITA HALL, COUNTY RECORDER  
10/29/2019 09:31 PM  
PLAT LARGE: 96x49  
PAGE: 1



AGENT:  
JOHN HENRY TROYER  
EAST HOLMES DEVELOPMENT, LTD.  
4609 TWP. RD. 371  
MILLERSBURG, OHIO 44654  
PH: 330-893-2015

REFERENCES:  
O.R. VOL. 178 PAGE 1310  
PLAT VOL. 2 PAGE 446  
PLAT VOL. 19 PAGE 665  
PLAT VOL. 19 PAGE 2365  
PLAT VOL. 19 PAGE 2403  
PLAT VOL. 2 PAGE 552  
PLAT VOL. 19 PAGE 2383  
PLAT VOL. 19 PAGE 1525  
BEARINGS FROM  
PLAT VOL. 2 PAGE 552

NOTE: SIGN IN PERMANENT BLACK INK.

CERTIFICATE OF OWNERSHIP AND DEDICATION  
We hereby certify that we are the owners of the property shown and described hereon and that we hereby adopt this plan of subdivision with our free consent and establish the minimum building restriction lines.  
*[Signature]* 10-22-19  
DATE

CERTIFICATE OF APPROVAL OF WATER SUPPLY AND SEWAGE TREATMENT SYSTEMS  
I hereby certify that the Subdivision plot entitled HAWK'S LANDING SUBDIVISION, PHASE 5 meets the requirements of the Board of Health for water supply and sewage treatment and is hereby approved for recording. The issuance of permits to install a private water system and on-site sewage treatment system for any lot is dependent on a site specific evaluation prior to the start of any construction.  
*[Signature]* 10-22-19  
Date

CERTIFICATE OF APPROVAL BY THE HOLMES SOIL AND WATER CONSERVATION DISTRICT  
I hereby certify that I have approved the subdivision plot and/or agreements or provisions for sedimentation and erosion control as stated or shown hereon.  
*[Signature]* 10/22/19  
Date

CERTIFICATE OF THE APPROVAL BY THE COUNTY COMMISSIONERS  
I hereby certify that the Holmes County Commissioners have approved the subdivision plot as shown hereon.  
*[Signature]* 10/23/19  
Date

CERTIFICATE OF THE APPROVAL OF PLAT  
I hereby certify that I have approved the plat shown hereon.  
*[Signature]* 10/23/19  
Date

CERTIFICATE OF APPROVAL FOR RECORDING  
I hereby certify that the subdivision plot shown hereon has been found to comply with the subdivision regulations for Holmes County, Ohio, with the exception of such variances, if any, as precluded in the minutes of the Holmes County Planning Commission and that it has been approved for recording in the office of the County Recorder.  
*[Signature]* 10/23/19  
Date

CERTIFICATE OF APPROVAL FOR RECORDING  
I hereby certify that the subdivision plot shown hereon has been found to comply with the subdivision regulations for Holmes County, Ohio, with the exception of such variances, if any, as precluded in the minutes of the Holmes County Planning Commission and that it has been approved for recording in the office of the County Recorder.  
*[Signature]* 10/23/19  
Date

CERTIFICATE OF APPROVAL FOR RECORDING  
I hereby certify that the subdivision plot shown hereon has been found to comply with the subdivision regulations for Holmes County, Ohio, with the exception of such variances, if any, as precluded in the minutes of the Holmes County Planning Commission and that it has been approved for recording in the office of the County Recorder.  
*[Signature]* 10/23/19  
Date

CERTIFICATE OF APPROVAL FOR RECORDING  
I hereby certify that the subdivision plot shown hereon has been found to comply with the subdivision regulations for Holmes County, Ohio, with the exception of such variances, if any, as precluded in the minutes of the Holmes County Planning Commission and that it has been approved for recording in the office of the County Recorder.  
*[Signature]* 10/23/19  
Date

CERTIFICATE OF APPROVAL FOR RECORDING  
I hereby certify that the subdivision plot shown hereon has been found to comply with the subdivision regulations for Holmes County, Ohio, with the exception of such variances, if any, as precluded in the minutes of the Holmes County Planning Commission and that it has been approved for recording in the office of the County Recorder.  
*[Signature]* 10/23/19  
Date

CERTIFICATE OF APPROVAL FOR RECORDING  
I hereby certify that the subdivision plot shown hereon has been found to comply with the subdivision regulations for Holmes County, Ohio, with the exception of such variances, if any, as precluded in the minutes of the Holmes County Planning Commission and that it has been approved for recording in the office of the County Recorder.  
*[Signature]* 10/23/19  
Date

CERTIFICATE OF APPROVAL FOR RECORDING  
I hereby certify that the subdivision plot shown hereon has been found to comply with the subdivision regulations for Holmes County, Ohio, with the exception of such variances, if any, as precluded in the minutes of the Holmes County Planning Commission and that it has been approved for recording in the office of the County Recorder.  
*[Signature]* 10/23/19  
Date

CURVE	DELTA ANGLE	RADIUS	ARC LENGTH	TANGENT	CHORD LENGTH	CHORD BEARING
C1	210°00'00"	274.11'	13.91'	6.96'	100.48'	N 74°24'11" E
C2	02°54'26"	274.11'	13.91'	6.96'	13.91'	N 86°26'35" E
C3	78°05'25"	18.00'	24.53'	14.60'	22.68'	N 48°51'05" E
C4	61°06'27"	60.00'	63.99'	35.42'	61.00'	N 40°21'36" E
C5	49°24'35"	60.00'	51.74'	27.60'	50.15'	S 84°22'53" E
C6	47°45'03"	60.00'	50.00'	26.56'	48.57'	S 35°48'04" E
C7	43°54'24"	60.00'	48.07'	25.41'	46.80'	S 11°01'40" W
C8	10°46'58"	224.11'	42.18'	21.15'	42.11'	S 89°15'30" W
C9	15°46'27"	224.11'	61.70'	31.05'	61.51'	S 82°32'12" W
C10	90°00'00"	20.00'	31.42'	20.00'	28.28'	N 44°34'34" W
C11	90°00'01"	20.00'	31.42'	20.00'	28.28'	S 44°34'35" E
C12	90°00'00"	20.00'	31.42'	20.00'	28.28'	S 45°25'26" W
C13	90°00'00"	20.00'	31.42'	20.00'	28.28'	N 44°34'34" W
C14	90°00'00"	20.00'	31.42'	20.00'	28.28'	N 45°25'26" E
C15	90°00'00"	20.00'	31.42'	20.00'	28.28'	S 44°34'34" E
C16	90°00'00"	20.00'	31.42'	20.00'	28.28'	N 45°25'26" E
C17	20°16'59"	274.11'	97.04'	49.03'	96.53'	N 80°16'56" E
C18	23°15'13"	224.11'	90.96'	46.11'	90.33'	S 75°29'37" W
C19	03°18'12"	224.11'	12.92'	6.46'	12.92'	S 88°46'20" W
C20	90°00'00"	20.00'	31.42'	20.00'	28.28'	N 44°34'34" W
C21	90°00'00"	20.00'	31.42'	20.00'	28.28'	S 45°25'26" W
C22	90°00'00"	20.00'	31.42'	20.00'	28.28'	N 45°25'26" E
C23	43°24'35"	60.00'	45.46'	23.88'	44.38'	S 63°05'29" E
C24	94°46'48"	60.00'	99.25'	65.23'	88.32'	N 47°48'50" E
C25	62°10'55"	60.00'	65.12'	36.18'	61.97'	N 30°40'01" W
C26	84°15'39"	60.00'	88.24'	54.27'	80.50'	S 76°06'42" W
C27	23°57'48"	60.00'	25.09'	12.73'	24.91'	S 21°59'58" W
C28	90°00'00"	20.00'	31.42'	20.00'	28.28'	N 44°34'34" W
C29	34°10'54"	70.00'	41.76'	21.52'	41.14'	N 17°30'53" E
C30	41°24'10"	70.00'	50.58'	26.45'	49.49'	S 55°18'24" W
C31	15°29'51"	70.00'	18.93'	9.52'	18.93'	S 33°45'15" W
C32	91°04'34"	20.00'	31.79'	20.38'	28.55'	N 45°57'43" E
C33	25°34'58"	60.00'	26.79'	13.62'	26.57'	S 20°53'08" E
C34	91°48'13"	60.00'	96.14'	61.92'	86.18'	S 79°34'44" E
C35	49°31'49"	60.00'	51.87'	27.68'	50.27'	N 29°45'15" E
C36	141°40'43"	60.00'	148.37'	172.68'	113.35'	N 65°51'01" W
C37	20°16'59"	224.11'	79.34'	40.09'	78.92'	N 80°16'56" E
C38	26°33'25"	249.11'	115.46'	58.79'	114.43'	S 77°08'43" W
C39	20°16'59"	249.11'	88.19'	44.56'	87.73'	S 80°16'56" W
C40	91°04'34"	45.00'	71.53'	45.85'	64.23'	N 45°57'43" E

AREA IN LOTS 14.165 ACRES.  
AREA IN ROAD 3.541 ACRES.  
TOTAL AREA IN ALLOTMENT 17.706 ACRES.

THESE LOTS ARE FOR RESIDENTIAL PURPOSES ONLY  
No further splits will be permitted without replatting said lots.

HAWK'S LANDING SUBDIVISION, PHASE 5 IS SUBJECT TO THE DECLARATIONS OF COVENANTS, CONDITIONS & RESTRICTIONS RECORDED IN OFFICIAL RECORD 187 PG. 2804, HOLMES COUNTY, OHIO.

For erosion and sedimentation control, the landowner will follow the Rainwater and Land Development, Ohio's Standards for Stormwater Management and Urban Street Protection. A copy of the Rainwater and Land Development, Ohio's Standards is available at the Holmes Soil and Water Conservation District Office: 62 West Clinton Street, Millersburg, Ohio 44654.  
State regulated permits and plans may be required by the Ohio Environmental Protection Agency to address stormwater and sedimentation issues.

TRANSFER NOT NECESSARY  
DATE October 29, 2019  
AUDITOR Jackie McChesney

CERTIFICATE OF ACCURACY  
I hereby certify that the plan shown and described hereon is a true and correct survey to the accuracy required by the Holmes County Planning Commission and that the monuments have been placed as shown hereon.  
*[Signature]* OCT. 22, 2019  
Date



BAKER SURVEYING, LLC  
138 N. CLAY ST.  
MILLERSBURG, OHIO 44654  
PH. 330-674-4788  
FAX 330-674-6027

0 60 120  
SCALE: 1"=60'  
COMP./WORKS/S-484-18  
DATE: FEB. 6, 2019 S-37-19

BERLIN TOWNSHIP  
4TH. QTR., LOT 1  
T-9 N; R-6 W  
HOLMES COUNTY, OHIO

5/8" REBAR FOUND  
UNLESS OTHERWISE NOTED  
5/8" REBAR WITH I.D. CAP SET  
I.D. CAP MARKED "BAKER 6938"