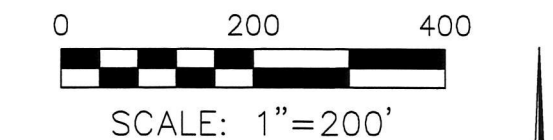


VILLAGE OF BERLIN
 OUTLOT 5
 N.W. QTR. SECTION 15

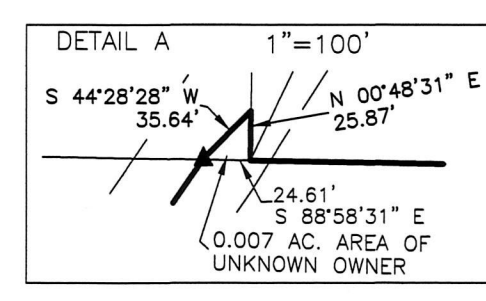
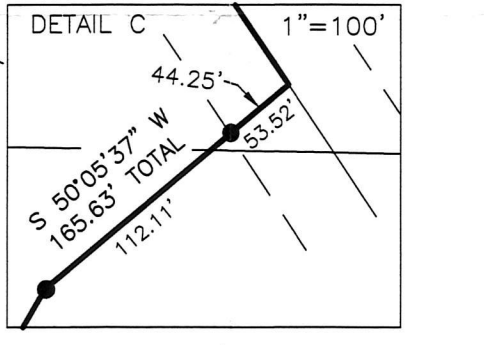
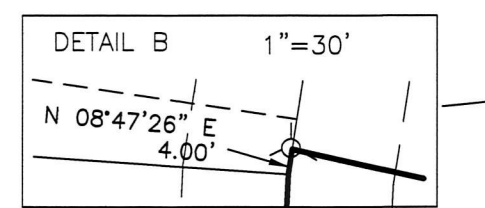
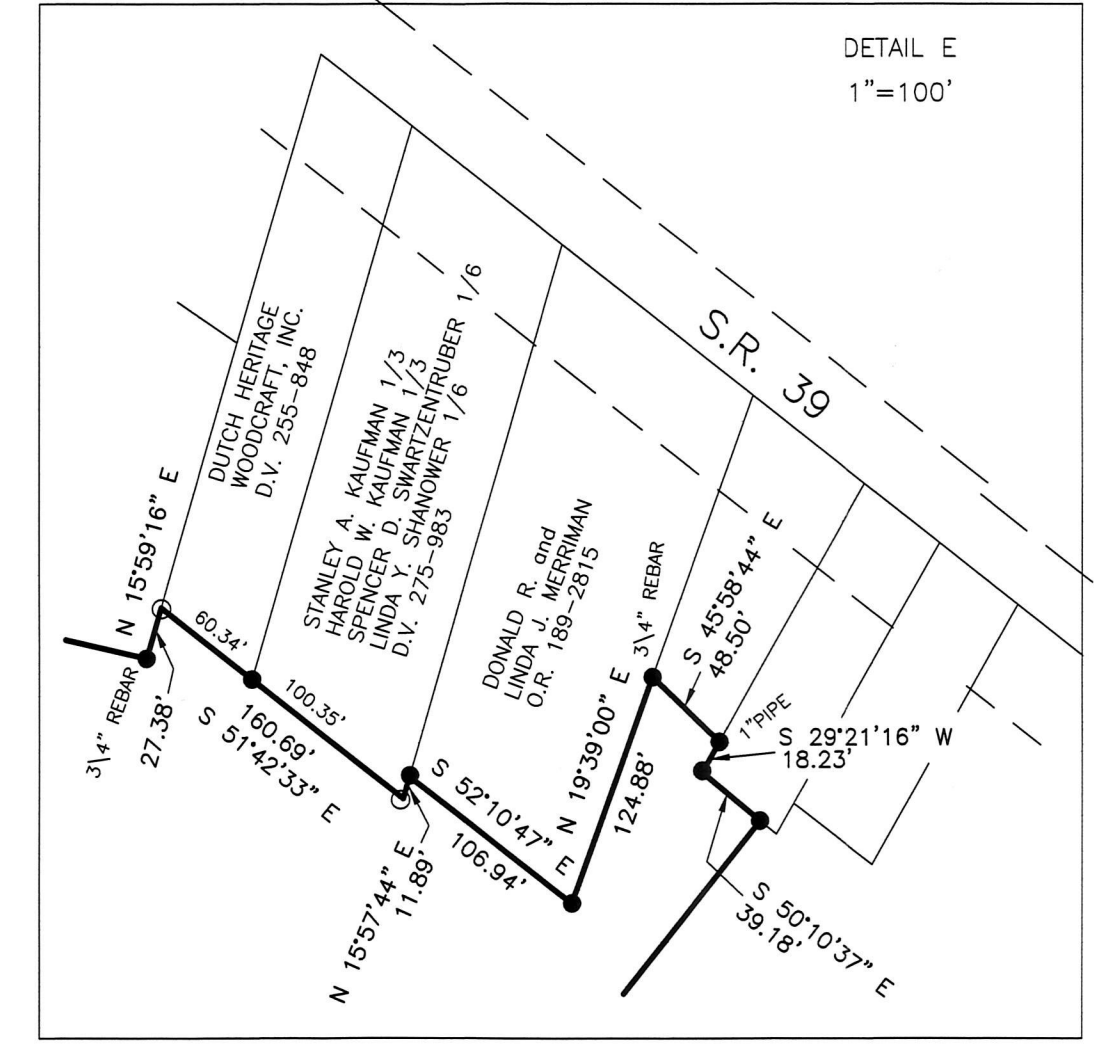
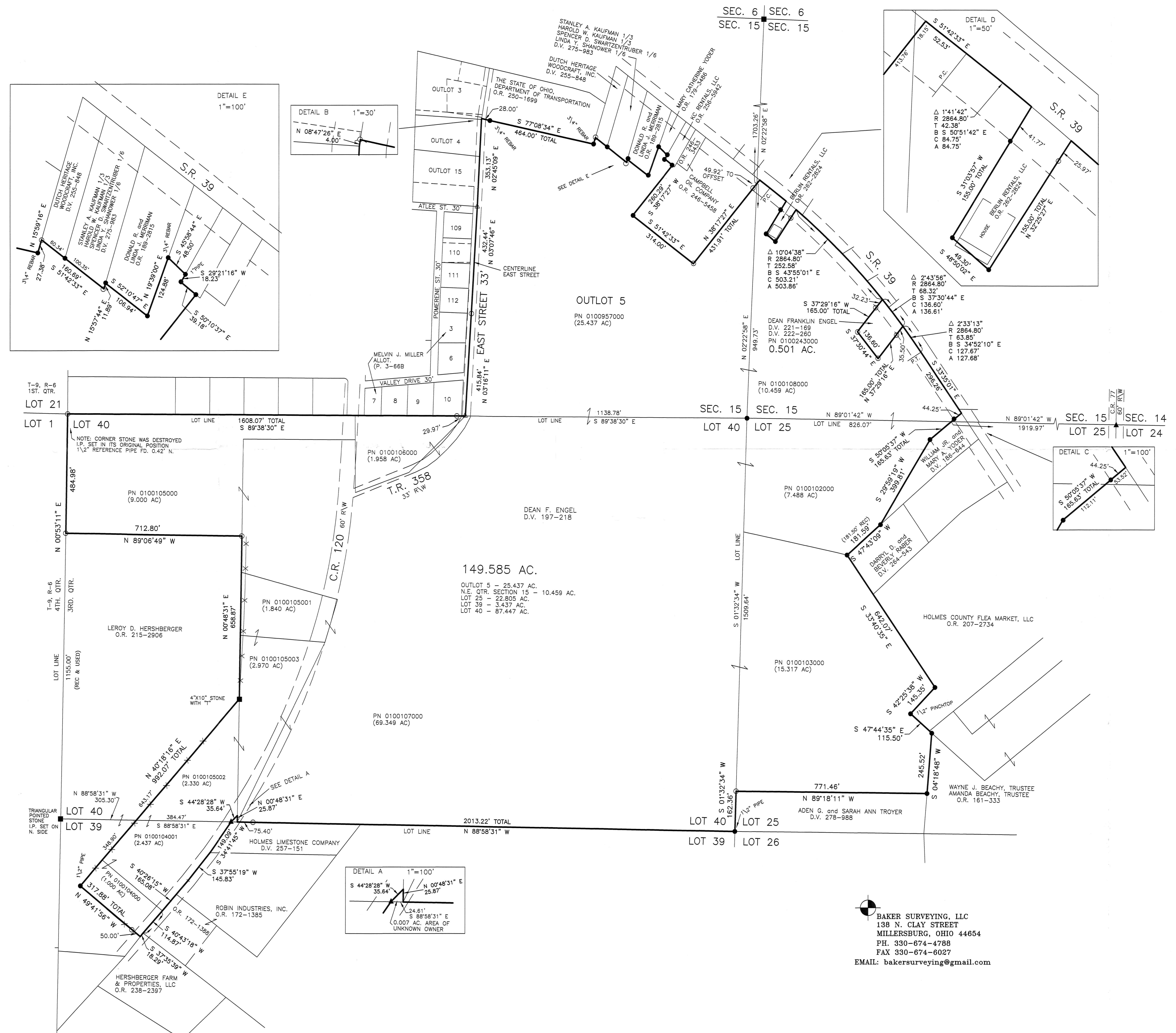
BERLIN TOWNSHIP
 N.E. QTR. SECTION 15
 3RD. QTR., LOTS 25, 39 & 40
 T-9 N; R-5 W
 HOLMES COUNTY, OHIO

SURVEYED FOR: DEAN ENGEL



- ▲ STONE FOUND
- R.R. SPIKE FOUND
- 5/8" REBAR FOUND UNLESS OTHERWISE NOTED
- △ R.R. SPIKE SET
- MAG NAIL SET
- 5/8" REBAR SET WITH I.D. CAP I.D. CAP MARKED "BAKER 6938"

- REFERENCES
- DEED VOL. 186 PAGE 644
 - DEED VOL. 284 PAGE 543
 - DEED VOL. 278 PAGE 988
 - DEED VOL. 222 PAGE 260
 - DEED VOL. 197 PAGE 218
 - O.R. VOL. 215 PAGE 2906
 - O.R. VOL. 262 PAGE 2824
 - O.R. VOL. 161 PAGE 333
- PLAT VOL. 18 PAGE 706
 - PLAT VOL. 18 PAGE 707
 - PLAT VOL. 14 PAGE 516
 - PLAT VOL. 4 PAGE 60
 - PLAT VOL. 14 PAGE 42
 - PLAT VOL. 8 PAGE 125
 - PLAT VOL. 8 PAGE 368
 - PLAT VOL. 18 PAGE 206
 - PLAT VOL. 17 PAGE 594
 - PLAT VOL. 4 PAGE 7
 - PLAT VOL. 2 PAGE 58
 - PLAT VOL. 12 PAGE 272
 - PLAT VOL. 3 PAGE 668
 - PLAT VOL. 19 PAGE 2349
 - PLAT VOL. 19 PAGE 2566
 - PLAT VOL. 18 PAGE 650
 - PLAT VOL. 16 PAGE 578
 - PLAT VOL. 18 PAGE 369
 - PLAT VOL. 19 PAGE 1925
 - PLAT VOL. 17 PAGE 436
 - PLAT VOL. 19 PAGE 1814
 - PLAT VOL. 11 PAGE 122
- BEARINGS FROM OHIO STATE PLANE COORDINATE SYSTEM, NORTH ZONE N.A.D. 83



I CERTIFY THIS SURVEY TO BE CORRECT TO THE BEST OF MY KNOWLEDGE.

AARON L. GERBER P.S. 8379
 DATE: MARCH 1, 2019
 ALC/SBC
 FILE NAME: WORKS\5-36-19

BAKER SURVEYING, LLC
 138 N. CLAY STREET
 MILLERSBURG, OHIO 44654
 PH. 330-674-4788
 FAX 330-674-6027
 EMAIL: bakersurveying@gmail.com

APPROVED FOR TRANSFER ONLY
 NO SUBDIVISION PLAT REQUIRED
 (O.R.C. 711.001 & 711.131)
 (Lot(s) not for building unless approved by Board of Health)
 HOLMES CO. PLANNING COMMISSION
 By: [Signature] Date: 3/28/19

PLAT APPROVED
 3/25/2019