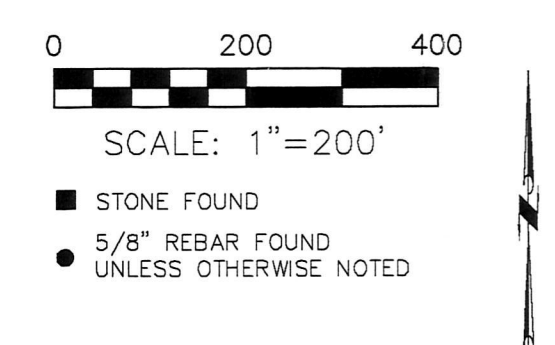


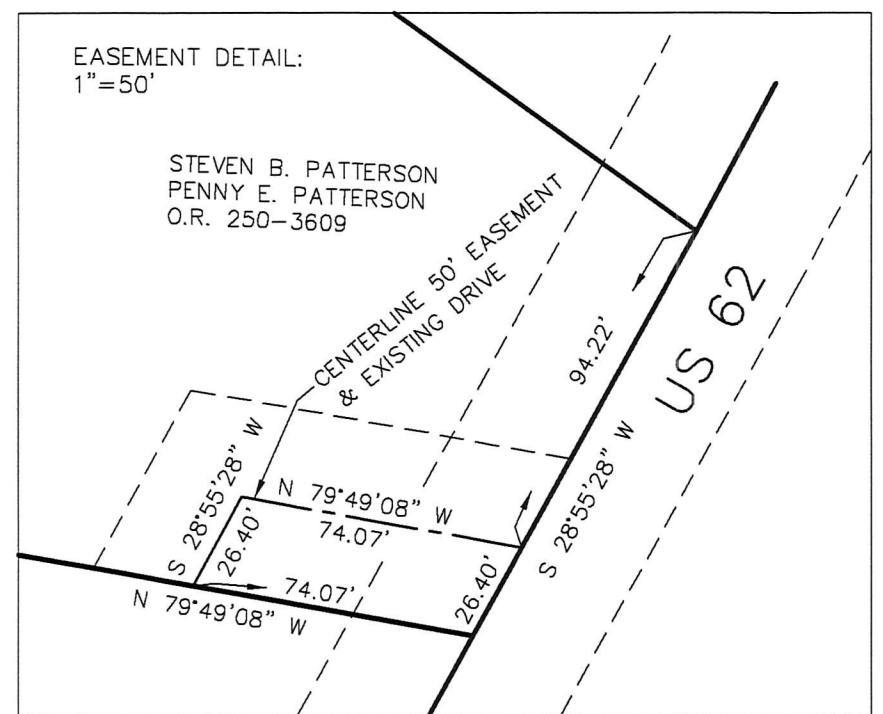
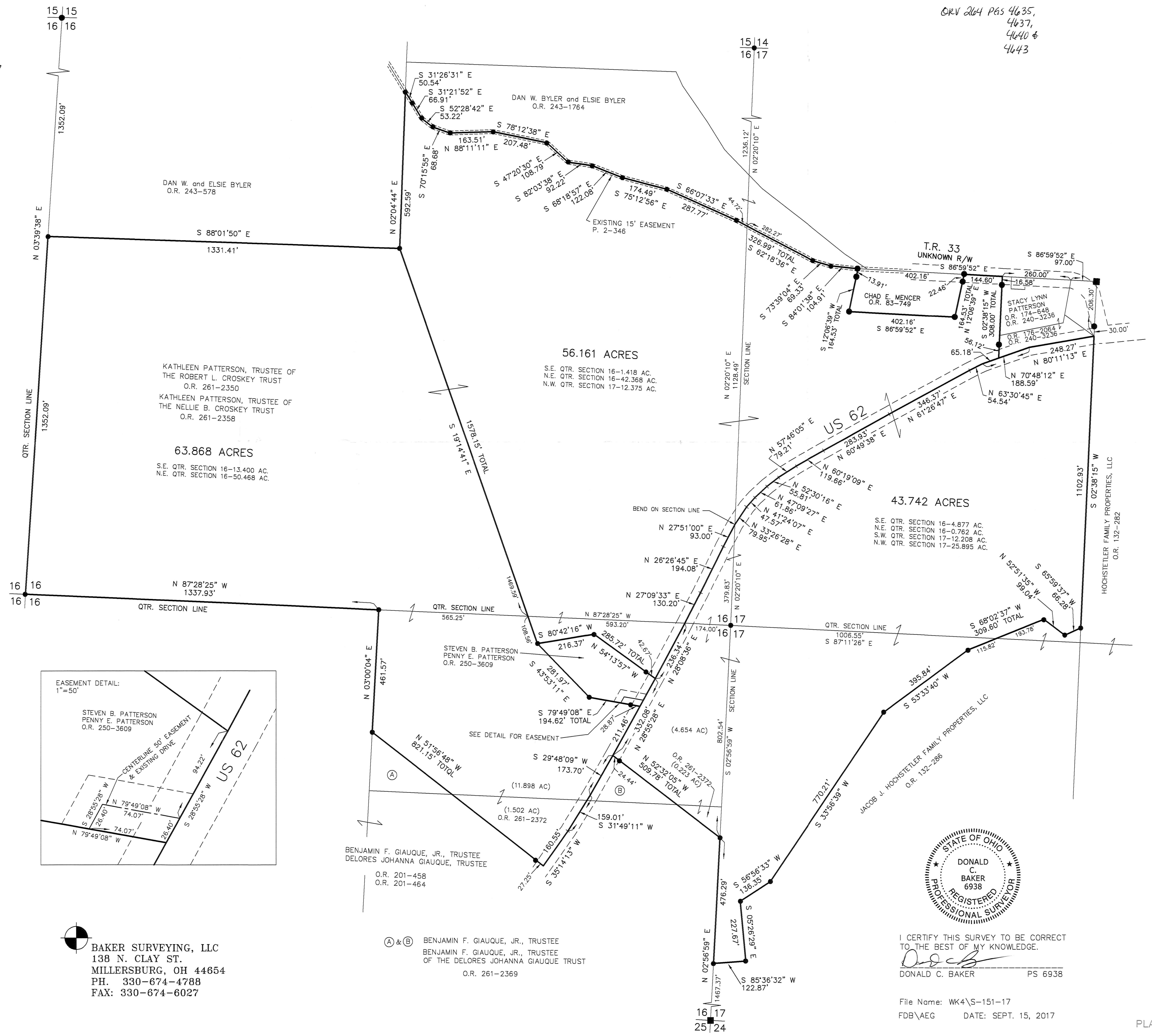
ORV 264 Pgs 4635,  
 4637,  
 4640 &  
 4643

RICHLAND TOWNSHIP  
 N.E. & S.E. QTRS. SECTION 16  
 N.W. & S.W. QTRS. SECTION 17  
 T-8 N; R-8 W  
 HOLMES COUNTY, OHIO

SURVEYED FOR: KATHLEEN PATTERSON



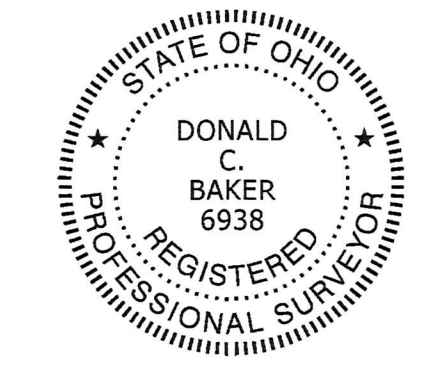
- REFERENCES:
- O.R. VOL. 243 PAGE 1764
  - O.R. VOL. 243 PAGE 578
  - O.R. VOL. 261 PAGE 2350
  - O.R. VOL. 132 PAGE 282
  - O.R. VOL. 261 PAGE 2358
  - O.R. VOL. 261 PAGE 2369
  - O.R. VOL. 83 PAGE 749
  - O.R. VOL. 261 PAGE 2365
  - O.R. VOL. 132 PAGE 286
  - O.R. VOL. 240 PAGE 3236
  - O.R. VOL. 261 PAGE 2372
  - PLAT VOL. 2 PAGE 388
  - PLAT VOL. 2 PAGE 436
  - PLAT VOL. 16 PAGE 644
  - PLAT VOL. 16 PAGE 758
  - PLAT VOL. 18 PAGE 468
  - PLAT VOL. 17 PAGE 857
  - PLAT VOL. 19 PAGE 1343
  - PLAT VOL. 19 PAGE 929
  - PLAT VOL. 19 PAGE 2249
  - PLAT VOL. 19 PAGE 2579
  - PLAT VOL. 19 PAGE 3288
- BEARINGS FROM  
 PLAT VOL. 2 PAGE 388



APPROVED FOR TRANSFER ONLY  
 NO SUBDIVISION PLAT REQUIRED  
 (O.R.C. 711.001 & 711.131)  
 Leasing not for building unless  
 approved by Board of Health  
 HOLMES CO. PLANNING COMMISSION  
 By: [Signature] Date: 7/16/18

**BAKER SURVEYING, LLC**  
 138 N. CLAY ST.  
 MILLERSBURG, OH 44654  
 PH. 330-674-4788  
 FAX: 330-674-6027

Ⓐ & Ⓑ BENJAMIN F. GIAUQUE, JR., TRUSTEE  
 BENJAMIN F. GIAUQUE, JR., TRUSTEE  
 OF THE DELORES JOHANNA GIAUQUE TRUST  
 O.R. 261-2369



I CERTIFY THIS SURVEY TO BE CORRECT  
 TO THE BEST OF MY KNOWLEDGE.  
 [Signature]  
 DONALD C. BAKER PS 6938

File Name: WK4\S-151-17  
 FDB\AEG DATE: SEPT. 15, 2017