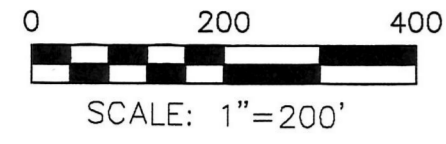


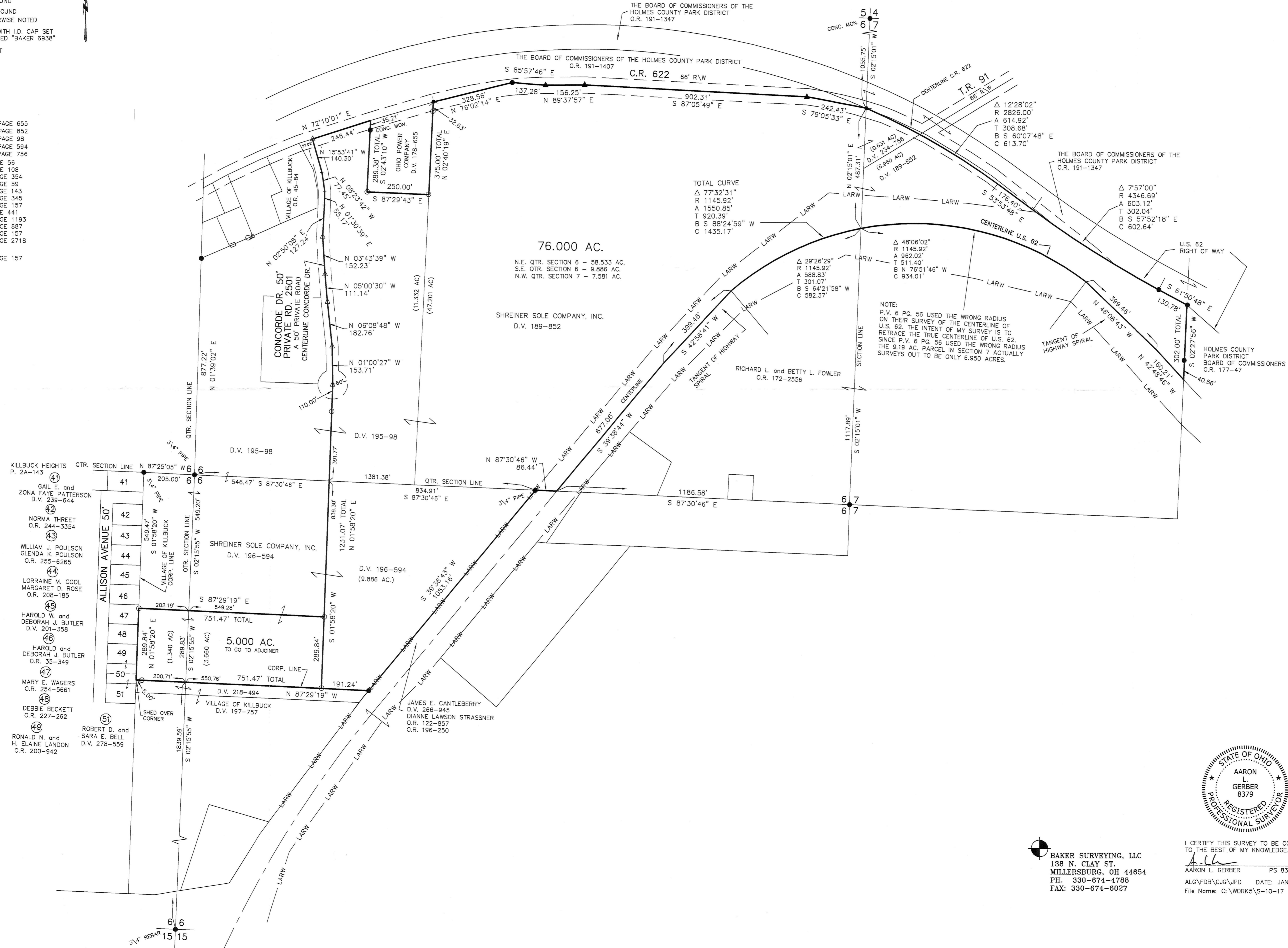
KILLBUCK TOWNSHIP
 N.E., S.E. & S.W. QTRS. SECTION 6
 N.W. QTR. SECTION 7
 T-8 N; R-7 W
 HOLMES COUNTY, OHIO



- P.K. NAIL FOUND
- ▲ R.R. SPIKE FOUND
- 5/8" REBAR FOUND UNLESS OTHERWISE NOTED
- 5/8" REBAR WITH I.D. CAP SET I.D. CAP MARKED "BAKER 6938"
- △ R.R. SPIKE SET

REFERENCES

- DEED VOL. 178 PAGE 655
- DEED VOL. 189 PAGE 852
- DEED VOL. 195 PAGE 98
- DEED VOL. 196 PAGE 594
- DEED VOL. 234 PAGE 756
- PLAT VOL. 6 PAGE 56
- PLAT VOL. 5 PAGE 108
- PLAT VOL. 17 PAGE 354
- PLAT VOL. 10 PAGE 59
- PLAT VOL. 24 PAGE 143
- PLAT VOL. 17 PAGE 343
- PLAT VOL. 15 PAGE 137
- PLAT VOL. 7 PAGE 441
- PLAT VOL. 19 PAGE 1193
- PLAT VOL. 19 PAGE 587
- PLAT VOL. 19 PAGE 157
- PLAT VOL. 19 PAGE 2718
- BEARINGS FROM PLAT VOL. 19 PAGE 157



NOTE:
 P.V. 6 PG. 56 USED THE WRONG RADIUS
 ON THEIR SURVEY OF THE CENTERLINE OF
 U.S. 62. THE INTENT OF MY SURVEY IS TO
 RETRACE THE TRUE CENTERLINE OF U.S. 62.
 SINCE P.V. 6 PG. 56 USED THE WRONG RADIUS
 THE 9.19 AC. PARCEL IN SECTION 7 ACTUALLY
 SURVEYS OUT TO BE ONLY 6.950 ACRES.



BAKER SURVEYING, LLC
 138 N. CLAY ST.
 MILLERSBURG, OH 44654
 PH: 330-674-4788
 FAX: 330-674-6027

I CERTIFY THIS SURVEY TO BE CORRECT
 TO THE BEST OF MY KNOWLEDGE.
 AARON L. GERBER PS 8379
 ALG\FDB\CJG\JPD DATE: JAN. 20, 2017
 File Name: C:\WORKS\5-10-17

APPROVED FOR TRANSFER ONLY
 NO SUBDIVISION PLAT REQUIRED
 (O.R.C. 711.001 & 711.131)
 (Not for building unless
 approved by Board of Health)
 HOLMES CO. PLANNING COMMISSION
 By: [Signature] Date: 1/13/17