

SETTING OF ALL MONUMENTS SHALL BE PERFORMED BY A SURVEYOR REGISTERED IN THE STATE OF OHIO. THE MONUMENT ASSEMBLIES AND REFERENCE MONUMENTS WILL BE INSTALLED BY THE CONTRACTOR AT THE TIME OF CONSTRUCTION. THE IRON PIN AND CAP (WHEN REQUIRED) ARE TO BE INSTALLED BY THE CONTRACTOR'S SURVEYOR.

CHANGES OR ALTERATIONS TO THE LOCATION OF ANY MONUMENTS SHOWN IN THIS TABLE, REQUIRE PRIOR APPROVAL FROM THE DISTRICT REAL ESTATE ADMINISTRATOR OF THE OHIO DEPARTMENT OF TRANSPORTATION. IN THE EVENT THAT CHANGES OR ALTERATIONS ARE APPROVED, A REVISED CENTERLINE PLAT WITH THE NEW LOCATIONS SHALL BE RECORDED IN THE APPLICABLE COUNTY RECORDS AND THE OHIO DEPARTMENT OF TRANSPORTATION. SPECIFICATIONS FOR MONUMENT ASSEMBLIES, REFERENCE MONUMENTS AND RIGHT OF WAY MONUMENTS ARE SHOWN ON STANDARD CONSTRUCTION DRAWING RM-1.1.

HOL-60-2.30

HOLMES COUNTY
KILLBUCK TOWNSHIP
SEC. 16, T. 8, R. 7

BASIS FOR BEARINGS:

ALL BEARINGS SHOWN ARE FOR PROJECT USE ONLY. BEARINGS ARE BASED UPON THE OHIO STATE PLANE COORDINATE SYSTEM, NAD 83, NORTH ZONE.

NOTE: BASIS OF EXISTING C OF R/W AND R/W WIDTH: THE EXISTING R/W WIDTH AND LOCATION WERE DETERMINED FROM MONUMENTATION FOUND DURING FIELD SURVEY, EXISTING PAVEMENT AND INFORMATION FROM THE HOLMES COUNTY TAX MAPS, AS THERE WERE NO OTHER RECORDS AVAILABLE

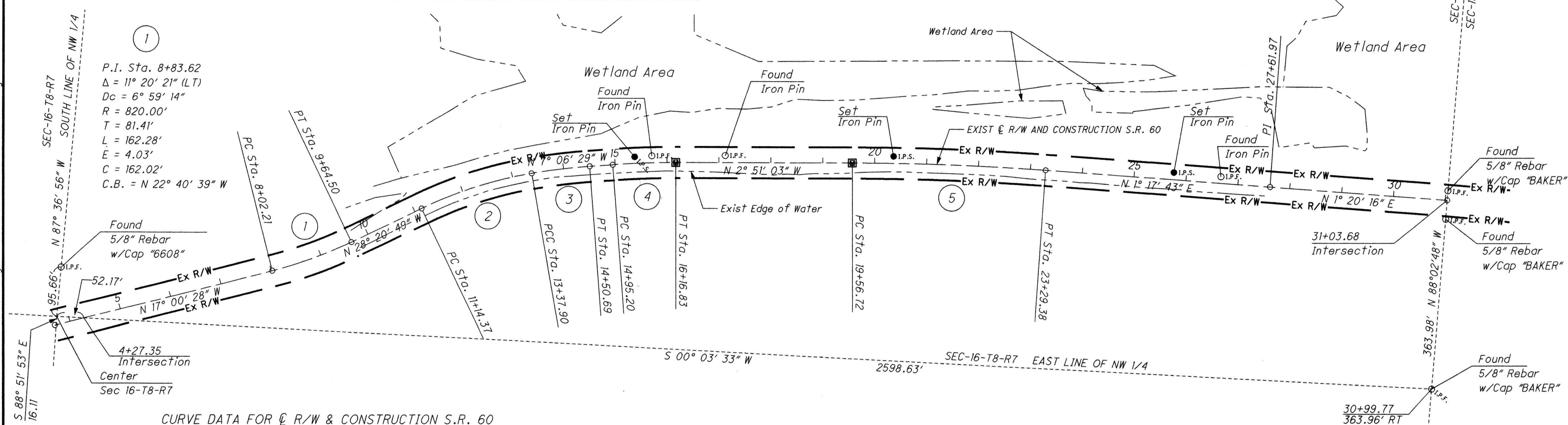
MONUMENT TABLE

E of R/W & CONST. S.R. 60		PROJECT COORDINATES SEE SURVEY CERTIFICATION		MONUMENTS TO BE SET DURING CONSTRUCTION		R/W MON. EXPECTED TO BE DISTURBED	DESCRIPTION
STATION	OFFSET	NORTH (Y)	EAST (X)	MON. ASSY.	REF. MON.	R/W MON.	
15+38.26	12.35' LT	295291.5890	2113248.3860	-	-	-	IPIN. SET OUTSIDE CONST LIMITS
15+71.15	13.31' LT	295324.5190	2113244.5290	-	-	-	IPIN. FOUND OUTSIDE CONST LIMITS
16+16.83	C	295371.1433	2113254.8875	1	-	-	MON. ASSY. SET ON CENTERLINE OF R/W
17+12.21	13.65' LT	295465.7290	2113236.5150	-	-	1	IPIN. FOUND WITHIN CONST LIMITS
19+56.72	C	295710.6078	2113237.9829	1	-	-	MON. ASSY. SET ON CENTERLINE OF R/W
20+36.28	13.31' LT	295789.6410	2113221.3420	-	-	1	IPIN. SET WITHIN CONST LIMITS
26+66.59	12.59' LT	296420.5660	2113227.9580	-	-	-	IPIN. FOUND OUTSIDE CONST LIMITS
TOTAL CARRIED TO GENERAL SUMMARY SHEET				2	-	2	

MONUMENT LEGEND

- EXISTING R/W MONUMENT BOX
- PROPOSED R/W MONUMENT BOX
- IRON PIN FOUND
- IRON PIN FOUND W/ ID CAP
- IRON PIN SET W/ ID CAP

G:\projects\2012\W-12-024 HOL-60-2.30 District 11\92120\row\sheet\92120RC001.dgn 5/31/2013 7:40:36 AM earlg



CURVE DATA FOR C R/W & CONSTRUCTION S.R. 60

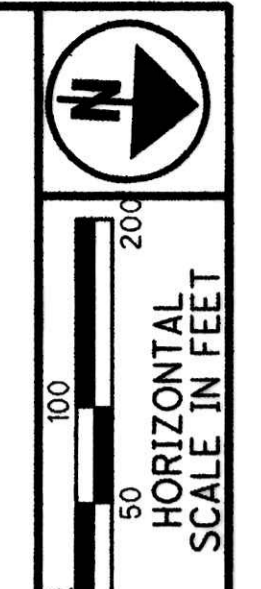
Station	Curve Data
1	P.I. Sta. 8+83.62 $\Delta = 11^\circ 20' 21''$ (LT) $Dc = 6^\circ 59' 14''$ $R = 820.00'$ $T = 81.41'$ $L = 162.28'$ $E = 4.03'$ $C = 162.02'$ $C.B. = N 22^\circ 40' 39'' W$
2	P.I. Sta. 12+26.83 $\Delta = 15^\circ 38' 16''$ (RT) $Dc = 6^\circ 59' 45''$ $R = 819.00'$ $T = 112.46'$ $L = 223.53'$ $E = 7.69'$ $C = 222.84'$ $C.B. = N 20^\circ 31' 41'' W$
3	P.I. Sta. 13+94.34 $\Delta = 5^\circ 36' 05''$ (RT) $Dc = 4^\circ 57' 57''$ $R = 1,153.80'$ $T = 56.44'$ $L = 112.79'$ $E = 1.38'$ $C = 112.75'$ $C.B. = N 9^\circ 54' 31'' W$
4	P.I. Sta. 15+56.04 $\Delta = 4^\circ 15' 26''$ (RT) $Dc = 3^\circ 30' 00''$ $R = 1,637.00'$ $T = 60.84'$ $L = 121.63'$ $E = 1.13'$ $C = 121.60'$ $C.B. = N 4^\circ 58' 46'' W$
5	P.I. Sta. 21+43.13 $\Delta = 4^\circ 08' 46''$ (RT) $Dc = 1^\circ 06' 45''$ $R = 5,150.00'$ $T = 186.41'$ $L = 372.66'$ $E = 3.37'$ $C = 372.58'$ $C.B. = N 0^\circ 46' 40'' W$

I, Mark S. Ward, P. S. have conducted a survey of the existing conditions for the Ohio Department of Transportation in August 2012. The results of that survey are contained herein. The horizontal coordinates expressed herein are based on the Ohio State Plane Coordinates System NORTH Zone on NAD 83 (CORS 96) datum. The Project Coordinates (US Survey Feet) are relative to State Plane Grid Coordinates (Meters or US Survey Feet) by a Project Adjustment Factor of 1.000049851. As a part of this project I have reestablished the locations of the existing property lines and the existing centerline of Right of Way for property taxes contained herein. As a part of this project I have established the proposed property lines, calculated the Gross Take, present roadway occupied (PRO), Net Take and Net Residue, as well as prepared the legal descriptions necessary to acquire the parcels as shown herein. As a part of this work I have set right of way monuments at the property corners, property line intersection, points along the right of way and/or angle points on the right of way, Section Corners and other points as shown herein. All of my work contained herein was conducted in accordance with Ohio Administrative Code 4733-37 commonly known as "Minimum Standards for Boundary Surveys in the State of Ohio" unless noted. The words I and my as used herein are to mean either myself or someone working under my direct supervision.

Mark S. Ward
Mark S. Ward, Professional Land Surveyor S-7514

Date: 5-20-13

201400088888
S: 2 P: 536
FILED FOR RECORD IN
HOLMES COUNTY, OH
BY: J. J. WARD, COUNTY RECORDER
05/22/2013 2:30 PM
PLAN LINES SHOWN
PAGE 1



PID NO. **92120**
R/W DESIGNER: BLM
R/W REVIEWER: MSW

CENTERLINE PLAT

HOL-60-2.30

RECEIVED _____, 20____
RECORDED _____, 20____
BOOK _____ PAGE _____
COUNTY RECORDER

