

Exhibit "A"

C.R. 292 & T.R. 302 RELOCATION

HARDY TOWNSHIP
HOLMES COUNTY, OHIO
LOTS 18 & 19, 3RD QTR,
TWP-9-NORTH, RANGE-7-WEST,
UNITED STATES MILITARY LANDS

Prepared By
Stantec Consulting Services, Inc.
1500 Lake Shore Drive, Suite 100
Columbus, Ohio 43204
Phone: (614) 466-4383

C.R. 292 CENTERLINE CONSTRUCTION CURVE DATA CURVE NO. 1	C.R. 292 CENTERLINE CONSTRUCTION CURVE DATA CURVE NO. 2	C.R. 292 CENTERLINE CONSTRUCTION CURVE DATA CURVE NO. 3	C.R. 292 CENTERLINE CONSTRUCTION CURVE DATA CURVE NO. 4	T.R. 302 CENTERLINE CONSTRUCTION CURVE DATA CURVE NO. 5
P.I. STA. 9+38.80 Δ = 06°27'03" LT. Dc = 02°30'00" R = 2291.83' T = 129.15' L = 258.04' E = 3.64' P.C. STA. 8+09.65 P.T. STA. 10+67.68 eMAX = 0.039 Brg = N 51°23'14" E Ch = 257.90'	P.I. STA. 20+22.19 Δ = 38°25'50" RT. Dc = 09°32'57" R = 600.00' T = 209.12' L = 402.44' E = 35.40' P.C. STA. 18+13.07 P.T. STA. 22+15.52 eMAX = 0.080 Brg = N 67°22'37" E Ch = 394.94'	P.I. STA. 27+33.73 Δ = 22°12'27" LT. Dc = 09°32'57" R = 600.00' T = 117.76' L = 232.56' E = 11.45' P.C. STA. 26+15.98 P.T. STA. 28+48.53 eMAX = 0.080 Brg = N 75°29'18" E Ch = 231.10'	P.I. STA. 30+47.27 Δ = 16°00'15" RT. Dc = 09°32'57" R = 600.00' T = 84.35' L = 167.59' E = 5.90' P.C. STA. 29+62.92 P.T. STA. 31+30.52 eMAX = 0.049 Brg = N 72°31'12" E Ch = 167.05'	P.I. STA. 40+41.80 Δ = 06°52'54" RT. Dc = 28°38'52" R = 200.00' T = 12.03' L = 24.02' E = 0.36' P.C. STA. 40+29.77 P.T. STA. 40+53.79 eMAX = N.C. Brg = N 28°23'51" W Ch = 24.01'

T.R. 302 @ MONUMENTS

TYPE	STATION	OFFSET
P.C.	40+29.77	12.00' LT.
P.T.	40+53.79	12.00' LT.

BASIS OF BEARINGS
THE BEARING DATUM IS BASED ON THE OHIO STATE PLANE COORDINATE SYSTEM, NORTH ZONE, NORTH AMERICAN DATUM OF 1983 (1986 ADJUSTMENT) USING A PRIMARY MONUMENT DESIGNATED "MILPORT" AND AN AZIMUTH MONUMENT DESIGNATED "MILPORT AK MK".

- MONUMENT LEGEND**
- ☐ STONE FOUND
 - FENCE POST
 - ⊕ R.R.S. FOUND
 - ⊕ R.R.S. SET
 - ⊕ P.K. NAIL FOUND
 - ⊕ R/W MONUMENT FOUND
 - ⊕ REBAR FOUND
 - ⊕ IRON PIN FOUND
 - ⊕ I.P.F. WITH I.D. CAP
 - ⊕ R/W MONUMENT SET
 - ⊕ MONUMENT BOX
 - ⊕ CENTERLINE REFERENCE MONUMENT TO BE SET

C.R. 292 @ MONUMENTS

TYPE	STATION	OFFSET
P.C.	08+09.65	15.00' LT.
P.T.	10+67.68	17.00' LT.
P.C.	18+13.07	17.00' RT.
P.T.	22+15.52	17.00' RT.
P.C.	26+15.98	17.00' RT.
P.T.	28+48.53	14.00' RT.
P.C.	29+62.92	14.00' RT.
P.T.	31+30.52	17.00' RT.

EXISTING CENTERLINE CURVE DATA

CURVE	Δ	R	T	L	Brg	Ch
CURVE A	02°57'03" LT.	2291.83'	59.03'	118.04'	N53°08'13" E	118.03'
CURVE B	11°36'34" RT.	716.20'	72.81'	145.12'	N57°27'59" E	144.87'
CURVE C	17°07'03" RT.	603.11'	90.77'	180.19'	N71°49'47" E	179.52'

LINE DATA

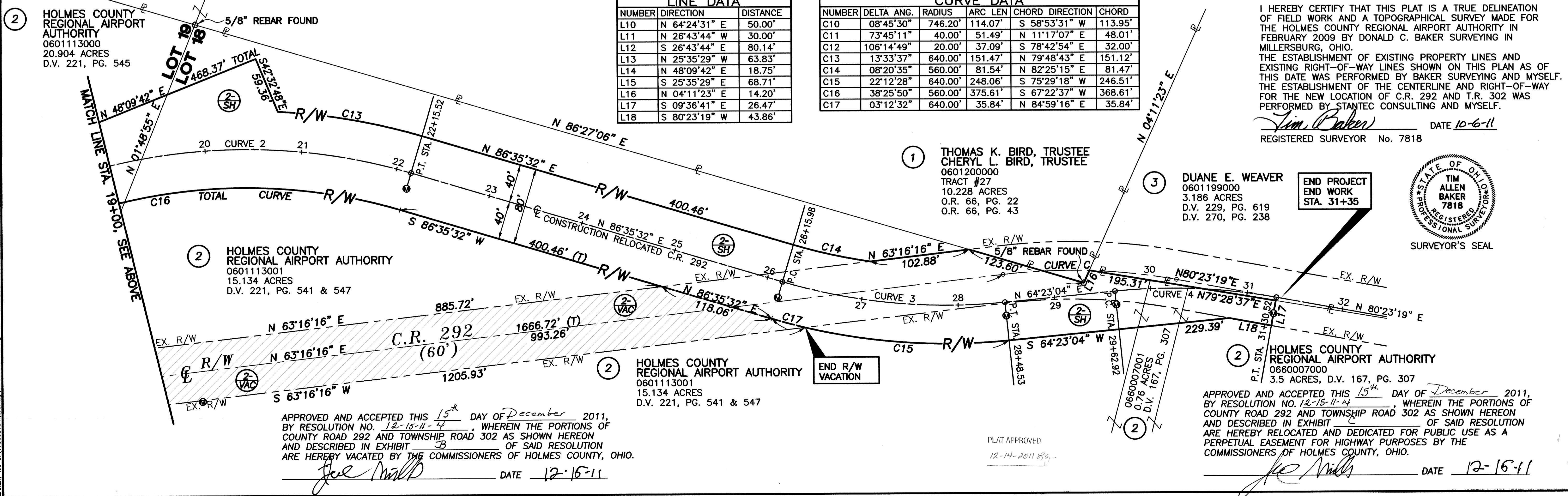
NUMBER	DIRECTION	DISTANCE
L10	N 64°24'31" E	50.00'
L11	N 26°43'44" W	30.00'
L12	S 26°43'44" E	80.14'
L13	N 25°35'29" W	63.83'
L14	N 48°09'42" E	18.75'
L15	S 25°35'29" E	68.71'
L16	N 04°11'23" E	14.20'
L17	S 09°36'41" E	26.47'
L18	S 80°23'19" W	43.86'

CURVE DATA

NUMBER	DELTA ANG.	RADIUS	ARC LEN	CHORD	DIRECTION	CHORD
C10	08°45'30"	746.20'	114.07'	S 58°53'31" W	113.95'	
C11	73°45'11"	40.00'	51.49'	N 11°17'07" E	48.01'	
C12	106°14'49"	20.00'	37.09'	S 78°42'54" E	32.00'	
C13	13°33'37"	640.00'	151.47'	N 79°48'43" E	151.12'	
C14	08°20'35"	560.00'	81.54'	N 82°25'15" E	81.47'	
C15	22°12'28"	640.00'	248.06'	S 75°29'18" W	246.51'	
C16	38°25'50"	560.00'	375.61'	S 67°22'37" W	368.61'	
C17	03°12'32"	640.00'	35.84'	N 84°59'16" E	35.84'	

I HEREBY CERTIFY THAT THIS PLAT IS A TRUE DELINEATION OF FIELD WORK AND A TOPOGRAPHICAL SURVEY MADE FOR THE HOLMES COUNTY REGIONAL AIRPORT AUTHORITY IN FEBRUARY 2009 BY DONALD C. BAKER SURVEYING IN MILLERSBURG, OHIO.
THE ESTABLISHMENT OF EXISTING PROPERTY LINES AND EXISTING RIGHT-OF-WAY LINES SHOWN ON THIS PLAN AS OF THIS DATE WAS PERFORMED BY BAKER SURVEYING AND MYSELF. THE ESTABLISHMENT OF THE CENTERLINE AND RIGHT-OF-WAY FOR THE NEW LOCATION OF C.R. 292 AND T.R. 302 WAS PERFORMED BY STANTEC CONSULTING AND MYSELF.

Tim Baker DATE 10-6-11
REGISTERED SURVEYOR No. 7818



APPROVED AND ACCEPTED THIS 15th DAY OF December 2011, BY RESOLUTION NO. 12-15-11-4, WHEREIN THE PORTIONS OF COUNTY ROAD 292 AND TOWNSHIP ROAD 302 AS SHOWN HEREON AND DESCRIBED IN EXHIBIT B OF SAID RESOLUTION ARE HEREBY VACATED BY THE COMMISSIONERS OF HOLMES COUNTY, OHIO.

Joel Wild DATE 12-15-11

APPROVED AND ACCEPTED THIS 15th DAY OF December 2011, BY RESOLUTION NO. 12-15-11-4, WHEREIN THE PORTIONS OF COUNTY ROAD 292 AND TOWNSHIP ROAD 302 AS SHOWN HEREON AND DESCRIBED IN EXHIBIT C OF SAID RESOLUTION ARE HEREBY RELOCATED AND DEDICATED FOR PUBLIC USE AS A PERPETUAL EASEMENT FOR HIGHWAY PURPOSES BY THE COMMISSIONERS OF HOLMES COUNTY, OHIO.

Joel Wild DATE 12-15-11

BAKER, TIM (A) 17360854\form\m\17360854\vac.dwg SCHEMATIC PLAN Date Saved: 04 06 2011 12:03 PM TBAKER Plotted: 04 06 2011 1:31 PM

ROADWAY RELOCATION AND VACATION PLAT
HOLMES COUNTY AIRPORT
C.R. 292 RELOCATION