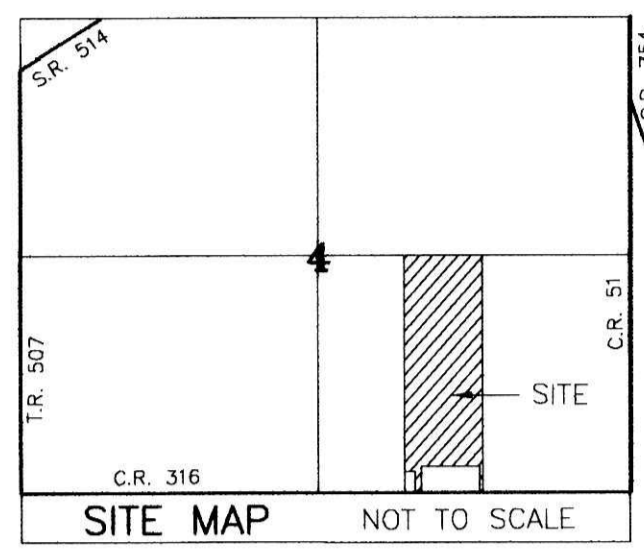


AGENT:
MELVIN YODER
12761 C.R. 316
BIG PRAIRIE, OH 44611
PHONE: 419-368-6012

SECLUDED PINES SUBDIVISION (FINAL)



- REFERENCES
- DEED VOL. 199 PAGE 269
 - DEED VOL. 154 PAGE 245
 - O.R. VOL. 181 PAGE 3171
 - O.R. VOL. 190 PAGE 830
 - O.R. VOL. 192 PAGE 1158
 - O.R. VOL. 226 PAGE 3077
 - PLAT VOL. 17 PAGE 348
 - PLAT VOL. 19 PAGE 836
 - BEARINGS FROM PLAT VOL. 19 PAGE 836

THESE LOTS ARE FOR RESIDENTIAL PURPOSES ONLY.
NO FURTHER SPLITS WILL BE PERMITTED
WITHOUT REPLATTING SAID LOTS.
NOTE: BUILDING SETBACK LINES ARE 15'
OFF SIDE AND REAR LINES AND
30' OFF ROAD RIGHT OF WAY

For erosion and sedimentation control, the landowner
will follow the Rainwater and Land Development, Ohio's
Standards for Stormwater Management and Urban
Street Protection. A copy of the Rainwater and Land
Development, Ohio's Standards is available at the
Holmes Soil and Water Conservation District Office:
62 W. Clinton Street
Millsburg, Ohio 44654

State regulated permits and plans may be required
by the Ohio Environmental Protection Agency to
address stormwater and sedimentation issues.

ACREAGE IN LOT 33.257 ACRES
ACREAGE IN ROAD DEDICATION 0.000 ACRES
TOTAL ACREAGE 33.257 ACRES

NOTE: SIGN IN PERMANENT BLACK INK
CERTIFICATE OF OWNERSHIP AND DEDICATION
We certify that we are the owners of the property
shown and described hereon and that we hereby adopt this
plan of subdivision with our free consent and establish the
minimum building restriction lines.
Melvin E. Yoder 9-7-11 DATE
MELVIN E. YODER
Elsie A. Yoder 9-7-11 DATE
ELSIE A. YODER

CERTIFICATE OF DEDICATION OF EASEMENTS
We, the undersigned, grant unto hereon shown Lots 1 & 2,
their heirs and assigns, the hereon shown easements for
the purpose of ingress, egress and utilities as shown on
this plan of subdivision.
Melvin E. Yoder 9-7-11 DATE
MELVIN E. YODER
Elsie A. Yoder 9-7-11 DATE
ELSIE A. YODER

CERTIFICATE OF APPROVAL OF WATER SUPPLY AND SEWAGE
TREATMENT SYSTEMS
I hereby certify that the subdivision plat entitled
SECLUDED PINES SUBDIVISION
meets the requirements of the Board of Health
for water supply and sewage treatment
and is hereby approved for recording. The issuance of
permits to install a private water system and on-site sewage
treatment system on any lot is dependent on a site specific
evaluation prior to the start of any construction.
McFadden 9/7/11 DATE
Health Commissioner

CERTIFICATE OF APPROVAL BY THE HOLMES SOIL AND WATER
CONSERVATION DISTRICT
I hereby certify that I have approved the subdivision plat
and/or agreements or provisions for sedimentation and
erosion control, as stated or shown hereon.
Phyllis Belmore 9-7-2011 DATE
Holmes Soil and Water Conservation District

CERTIFICATE OF APPROVAL BY THE COUNTY COMMISSIONERS
I hereby certify that the County Commissioners have
approved the subdivision plat as shown hereon.
Re Miller DATE
Chairman, County Commissioners

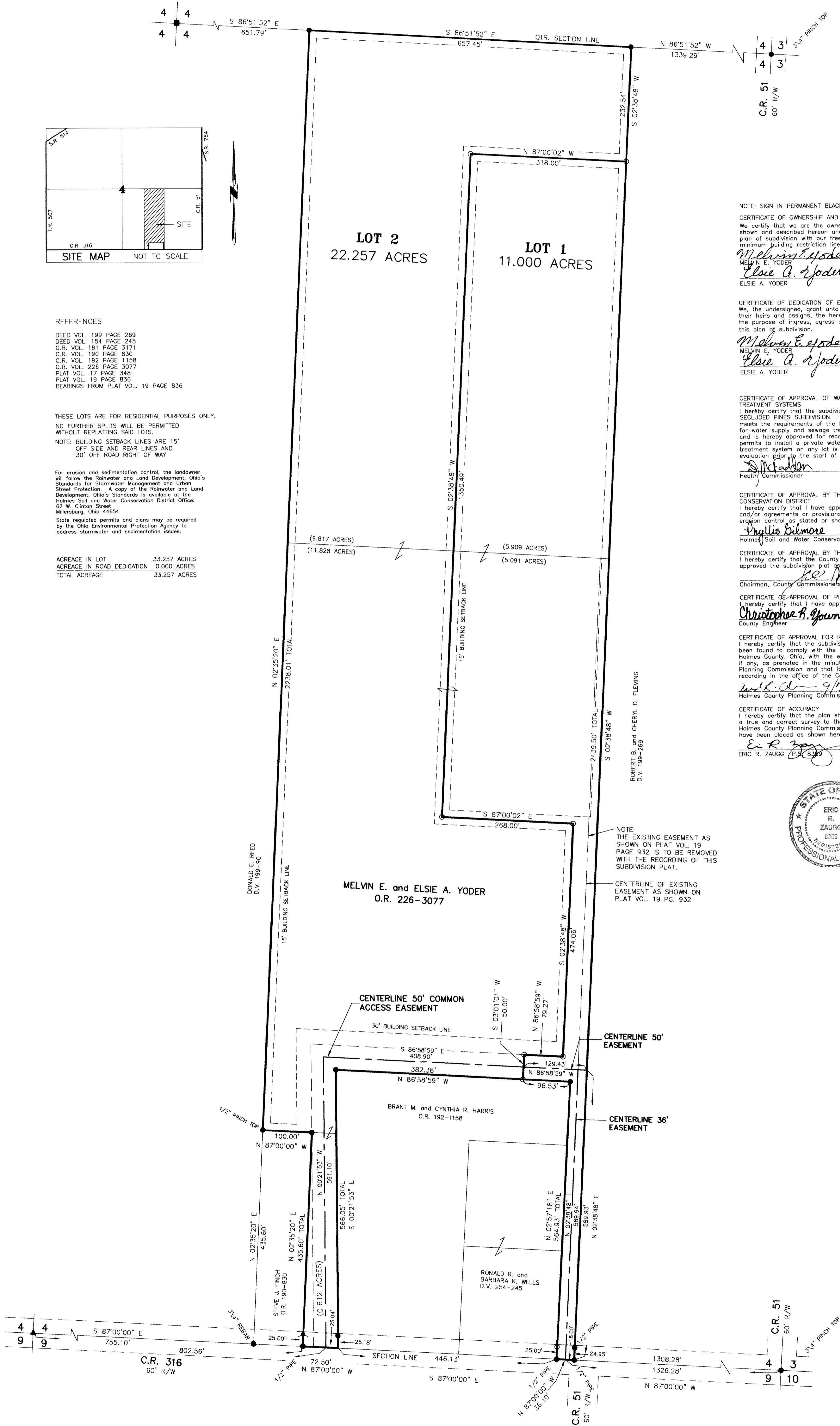
CERTIFICATE OF APPROVAL OF PLAT
I hereby certify that I have approved the plat shown hereon.
Christopher R. Goumey, P.E., P.S. 9/7/11 DATE
County Engineer

CERTIFICATE OF APPROVAL FOR RECORDING
I hereby certify that the subdivision plat shown hereon has
been found to comply with the subdivision regulations for
Holmes County, Ohio, with the exception of such variances,
if any, as presented in the minutes of the Holmes County
Planning Commission and that it has been approved for
recording in the office of the County Recorder.
Eric R. Zaugg 9/7/11 DATE
Holmes County Planning Commission

CERTIFICATE OF ACCURACY
I hereby certify that the plan shown and described hereon is
a true and correct survey to the accuracy required by the
Holmes County Planning Commission and that the monuments
have been placed as shown hereon.
Eric R. Zaugg Aug. 25, 2011 DATE
ERIC R. ZAUGG



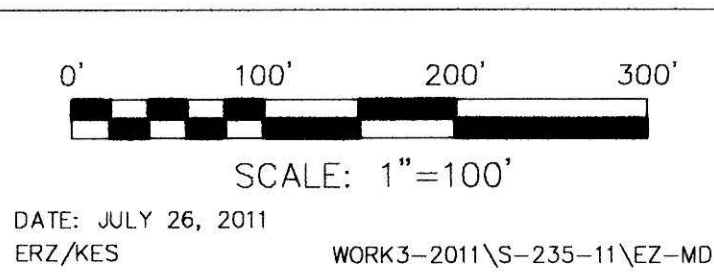
NOTE:
THE EXISTING EASEMENT AS
SHOWN ON PLAT VOL. 19
PAGE 932 IS TO BE REMOVED
WITH THE RECORDING OF THIS
SUBDIVISION PLAT.
CENTERLINE OF EXISTING
EASEMENT AS SHOWN ON
PLAT VOL. 19 PG. 932



TRANSFER NOT NECESSARY
DATE Sept 15, 2011
AUDITOR Jackie Mc. Kane

DONALD C. BAKER SURVEYING
138 N. CLAY STREET
MILLERSBURG, OHIO 44654
PH. 330-674-4788
FAX 330-674-6027

RIPLEY TOWNSHIP
S.E. QTR. SECTION 4
T-17 N; R-14 W
HOLMES COUNTY, OHIO



- STONE FOUND
- P.K. NAIL FOUND
- R.R. SPIKE FOUND
- 5/8" REBAR FOUND UNLESS OTHERWISE NOTED
- 5/8" REBAR SET WITH I.D. CAP I.D. CAP MARKED "BAKER 6938"