

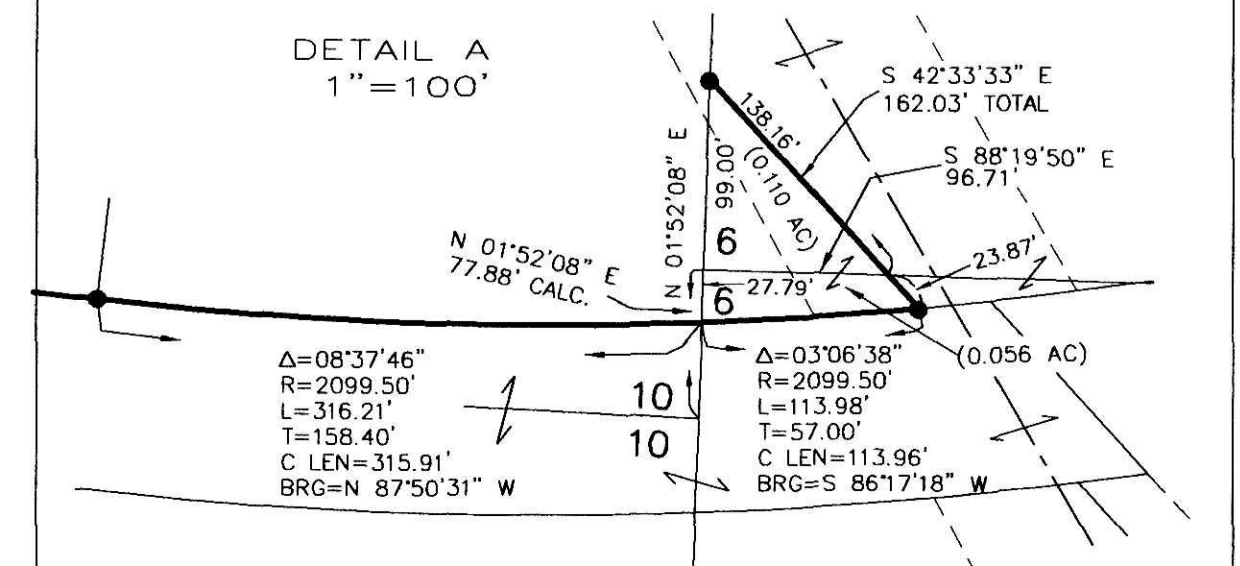
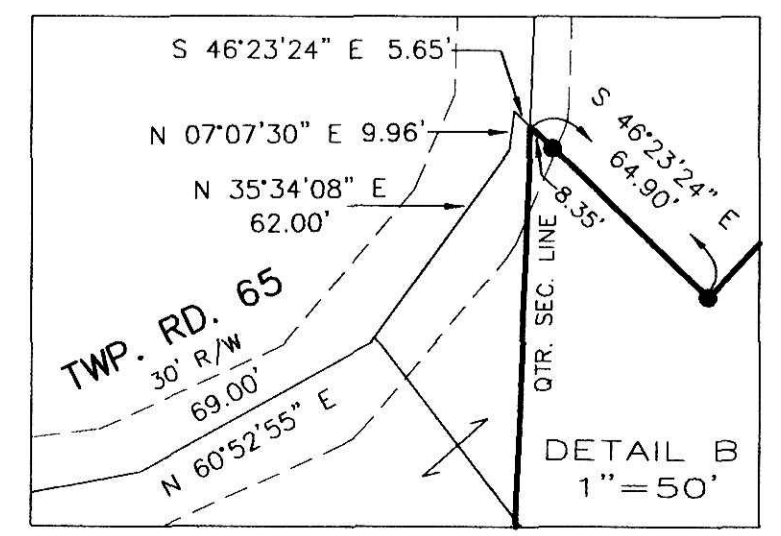
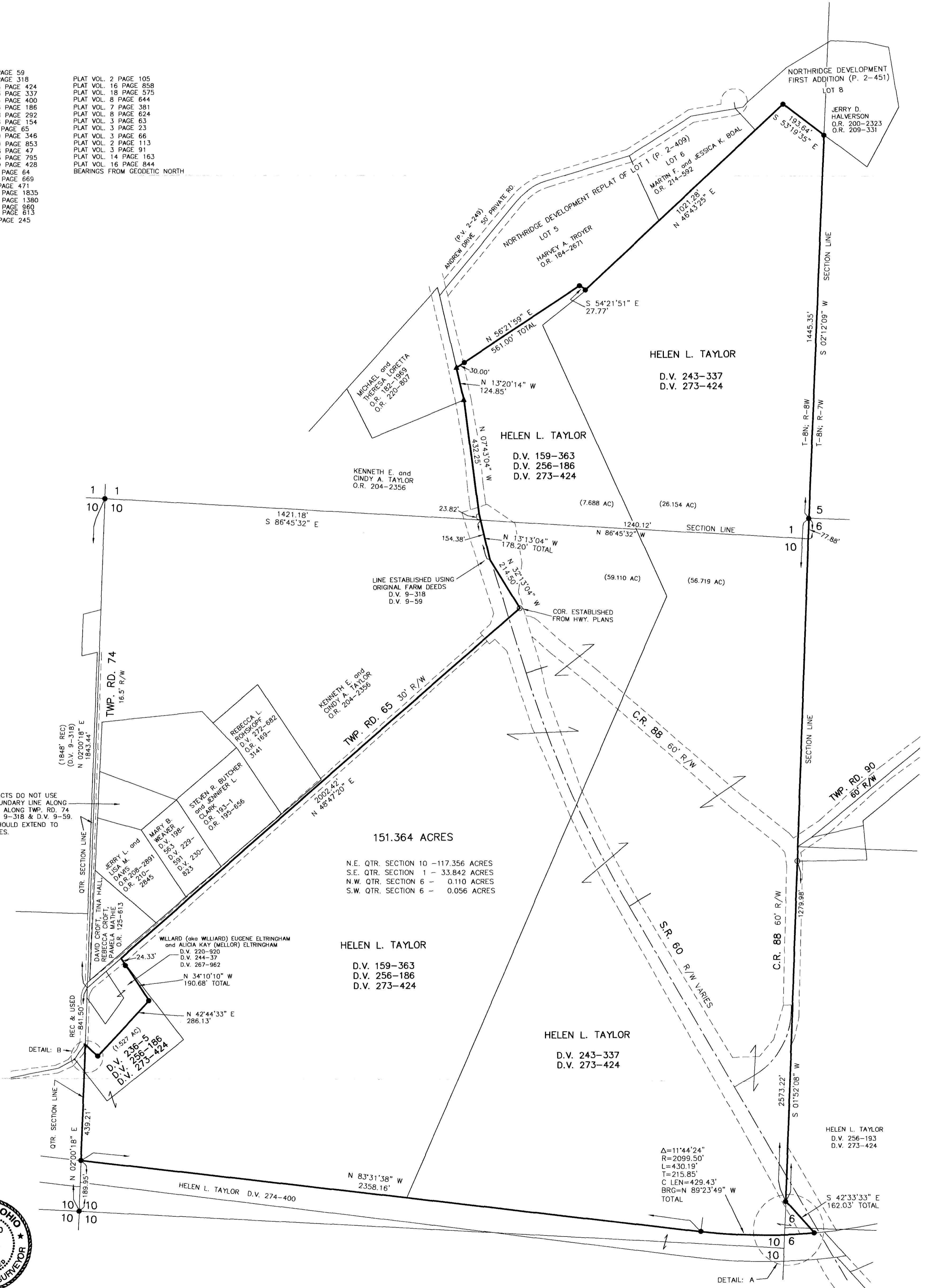
- ▲ R.R. SPIKE FOUND
- 5/8" REBAR FOUND
- UNLESS OTHERWISE NOTED
- 5/8" REBAR SET WITH I.D. CAP
- I.D. CAP MARKED "BAKER 6938"

KILLBUCK TOWNSHIP
S.E. QTR. SECTION 1
N.E. QTR. SECTION 10
T-8 N; R-8 W
N.W. & S.W. QTRS. SECTION 6
T-8 N, R-7 W
HOLMES COUNTY, OHIO
SURVEYED FOR: HELEN TAYLOR

REFERENCES

- DEED VOL. 9 PAGE 59
- DEED VOL. 9 PAGE 318
- DEED VOL. 273 PAGE 424
- DEED VOL. 243 PAGE 337
- DEED VOL. 274 PAGE 400
- DEED VOL. 256 PAGE 186
- DEED VOL. 278 PAGE 292
- DEED VOL. 276 PAGE 154
- DEED VOL. 56 PAGE 65
- DEED VOL. 210 PAGE 346
- DEED VOL. 209 PAGE 353
- DEED VOL. 238 PAGE 47
- DEED VOL. 203 PAGE 795
- DEED VOL. 250 PAGE 428
- O.R. VOL. 166 PAGE 64
- O.R. VOL. 194 PAGE 669
- O.R. VOL. 16 PAGE 47
- O.R. VOL. 192 PAGE 1835
- O.R. VOL. 183 PAGE 1380
- O.R. VOL. 114 PAGE 960
- O.R. VOL. 125 PAGE 613
- O.R. VOL. 77 PAGE 245
- PLAT VOL. 2 PAGE 105
- PLAT VOL. 16 PAGE 858
- PLAT VOL. 18 PAGE 575
- PLAT VOL. 8 PAGE 644
- PLAT VOL. 7 PAGE 381
- PLAT VOL. 8 PAGE 624
- PLAT VOL. 3 PAGE 63
- PLAT VOL. 3 PAGE 23
- PLAT VOL. 3 PAGE 66
- PLAT VOL. 2 PAGE 113
- PLAT VOL. 3 PAGE 91
- PLAT VOL. 14 PAGE 163
- PLAT VOL. 16 PAGE 844
- BEARINGS FROM GEODETIC NORTH

NOTE: THESE TRACTS DO NOT USE THE CORRECT BOUNDARY LINE ALONG TWP RD. 65 AND ALONG TWP RD. 74 BASED UPON D.V. 9-318 & D.V. 9-59. THESE TRACTS SHOULD EXTEND TO THE CORRECT LINES.



I CERTIFY THIS SURVEY TO BE CORRECT TO THE BEST OF MY KNOWLEDGE.
 DONALD C. BAKER P.S. 6938
 DATE: DECEMBER 5, 2007
 FDB/ALG
 FILE NAME: WORK4(S-393907)DCB/WLD
 REVISED SEPTEMBER 1, 2010 (To update names)

DONALD C. BAKER SURVEYING
 138 N. CLAY STREET
 MILLERSBURG, OHIO 44654
 PH. 330-674-4788
 FAX 330-674-6027

PLAT APPROVED

9/21/2010
10/15/2010