

SURVEYED FOR: HENRY RABER

REFERENCES

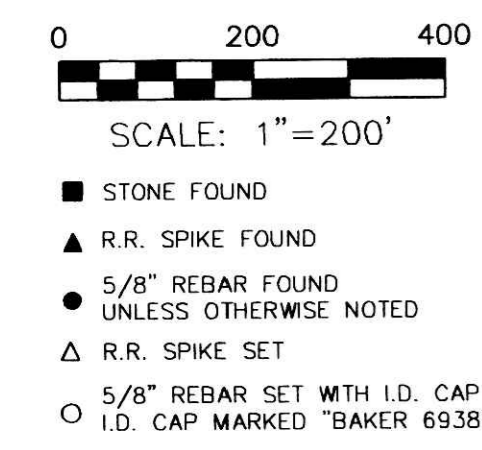
- DEED VOL. 173 PAGES 563 & 568
- DEED VOL. 177 PAGE 386
- DEED VOL. 187 PAGES 740 & 744
- DEED VOL. 231 PAGE 904
- DEED VOL. 242 PAGE 75
- DEED VOL. 243 PAGE 224
- DEED VOL. 244 PAGE 841
- DEED VOL. 267 PAGE 504
- O.R. VOL. 18 PAGE 142
- O.R. VOL. 27 PAGE 844
- O.R. VOL. 72 PAGE 828
- O.R. VOL. 154 PAGE 877
- O.R. VOL. 178 PAGE 353
- O.R. VOL. 186 PAGE 2155
- O.R. VOL. 201 PAGE 2327

- PLAT VOL. 5 PAGE 88
- PLAT VOL. 6 PAGE 170
- PLAT VOL. 7 PAGES 317 & 318
- PLAT VOL. 12 PAGES 303 & 986
- PLAT VOL. 17 PAGES 279 & 853
- PLAT VOL. 19 PAGE 303
- BEARINGS FROM PLAT VOL. 12 PAGE 986

Instrument
 20090060582 DR Book Page
 2 475

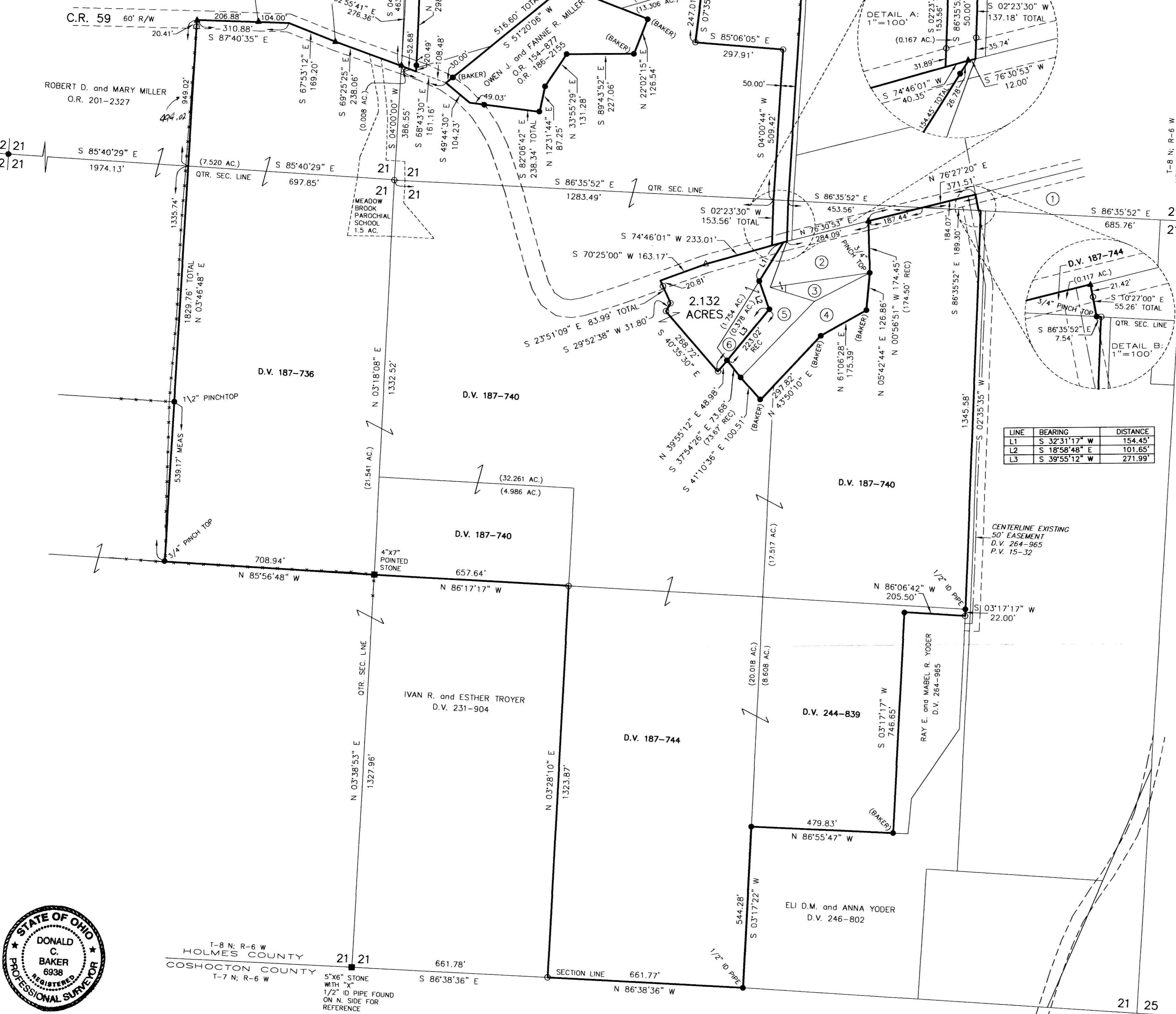
20090060582
 Filed for Record in
 HOLMES COUNTY OH
 ANITA HALL
 03-26-2009 At 01:30 pm.
 PLAT LARGE
 DR Book: 2 Page: 475 - 475
 ORV 209 page 2962-2966

20090060582
 MILLER, HAST & HASON ATTY
 MILLERSBURG OH



NOTE:
 PLAT VOL. 17 PG. 853
 APPEARS TO HAVE A
 BAD READING ON THE
 I.P. ON THE QTR. SEC.
 LINE

- 1 KENNETH E. MULLET and SHIRLEY A. FALER D.V. 267-504
- 2 ATLEE A. and LENA BARKMAN D.V. 242-75
- 3 ATLEE A. and LENA BARKMAN D.V. 242-75
- 4 ATLEE A. and LENA BARKMAN O.R. 40-754
- 5 ATLEE A. and LENA BARKMAN D.V. 244-841
- 6 HENRY V. and ERMA RABER O.R. 178-353



LINE	BEARING	DISTANCE
L1	S 32°31'17\" W	154.45'
L2	S 18°58'48\" E	101.65'
L3	S 39°55'12\" W	271.99'



I CERTIFY THIS SURVEY TO BE CORRECT TO THE BEST OF MY KNOWLEDGE.

Donald C. Baker
 DONALD C. BAKER P.S. 6938
 DATE: JAN. 26, 2009
 KES\ALG-ERZ-FDB-JDD-LGC
 FILE NAME: WORK4\S-556-08\ERZ

APPROVED FOR TRANSFER ONLY
 NO SUBDIVISION PLAT REQUIRED
 O.R.C. 111.001 & 111.131
 Lots) not for building unless
 approved by Board of Health.
 HOLMES CO. PLANNING COMM.
 By: *VB* Date: 3-17-09

DONALD C. BAKER SURVEYING
 138 N. CLAY STREET
 MILLERSBURG, OHIO 44654
 PH. 330-674-4788
 FAX 330-674-6027

PLAT APPROVED
 3/16/2009