

PLEASANT VIEW GLASS PLANT ADDITION (P.V. 1 PG.357) REPLAT OF LOTS 7, 8, 9, 19 (P.V. 2 PG. 447) AND A PORTION OF VACATED GARRISON ALLEY IN BLOCK 15 VILLAGE OF MILLERSBURG HARDY TOWNSHIP, HOLMES COUNTY, OHIO

NOTES:

1. THE 50 FT. COLUMBIA GAS TRANSMISSION EASEMENT IS CENTERED ON THE ACTUAL LOCATION OF THE 6 INCH HIGH PRESSURE GAS MAIN AS SHOWN HEREON.

20080054718
JUANNE BASILE
951 KARLA DR
CLINTON OH 44216

BASIS OF BEARINGS

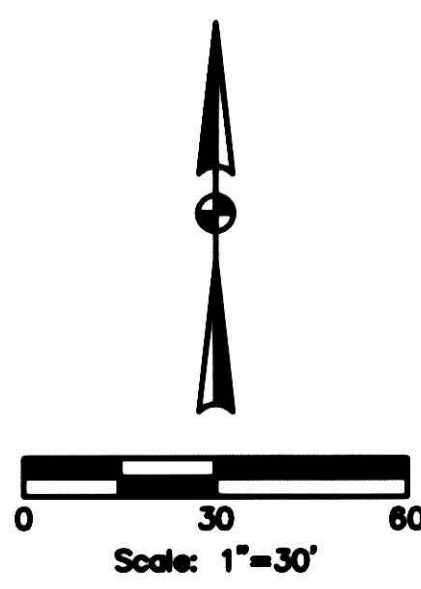
THE BASIS OF BEARINGS IS ORIENTED TO THE SOUTH LINE OF MILITARY LOT 37, 1st QTR. T-9 R-7 AS SHOWN ON THE PLAT RECORDED IN PLAT BOOK 14, PAGE 3 OF THE HOLMES COUNTY RECORDER'S OFFICE.

REFERENCES

- PLAT BOOK 2, PAGE 447
- PLAT BOOK 1, PAGE 357
- PLAT BOOK 14, PAGE 3
- P.V. VOL. 17, PAGE 81
- O.R. VOL. 19, PAGE 606

EXISTING MONUMENTS FOUND

POINT	DESCRIPTION	COMMENTS
A	5/8" Rebar	Held
B	5/8" Rebar w/ Baker cap	4.14' N. of S. ℓ & 20.00' E. of W. ℓ
C	5/8" Rebar w/ Baker cap	Held for N-S Line, 4.01' N. of ℓ
D	1" Iron Pipe	Held for N. Line of Sill St., 1.11' E. of ℓ
E	1" Iron Pipe	On Line
F	3/4" Iron Pipe	1.29' N. of ℓ
G	5/8" Rebar w/ Baker cap	Held for N-S Line, On Line for E-W Line
H	5/8" Rebar w/ Baker cap	Held for N-S Line, On Line for E-W Line
I	5/8" Rebar	Held
J	5/8" Rebar w/ Baker cap	Held
K	5/8" Rebar w/ Eng. Assoc. cap	On Line for N-S Line
L	5/8" Rebar w/ Eng. Assoc. cap	On Line for N-S Line
M	5/8" Rebar w/ Eng. Assoc. cap	Held



AREA TABLE	
LOT	CALC. AREA
Lot 19	1.158 Ac.
Lot 7	0.170 Ac.
Lot 8	0.148 Ac.
Lot 9	0.148 Ac.
Vacated Alley	0.063 Ac.
Total	1.687 Ac.

LEGEND

- 5/8" REBAR WITH "ENGINEERING ASSOCIATES" CAP SET
- IRON PIN OR PIPE FOUND
- M MEASURED
- R RECORD
- R/W RIGHT-OF-WAY
- P.P.N. PERMANENT PARCEL NUMBER

Walter J. Snyder
Sally Miller
1-15-08

20080054718
Filed for Record in
HOLMES COUNTY, OH
SALLY MILLER
02-20-2008 At 11:19 am.
PLAT LARGE 86.40
DR Book 2 Page 459 - 459

The replat of Lots 7, 8, 9, 19 and a portion of vacated Garrison Alley in Block 15 of the Pleasant View Glass Plant Addition was approved by the Village Planning Commission this ____ day of _____, 2007.

President, Millersburg Planning Commission

I hereby certify that I have surveyed the land shown on this plat, and that this plat is a correct representation of the land surveyed in March and November 2007, and that I have found or set the pins and monuments shown on the plat.

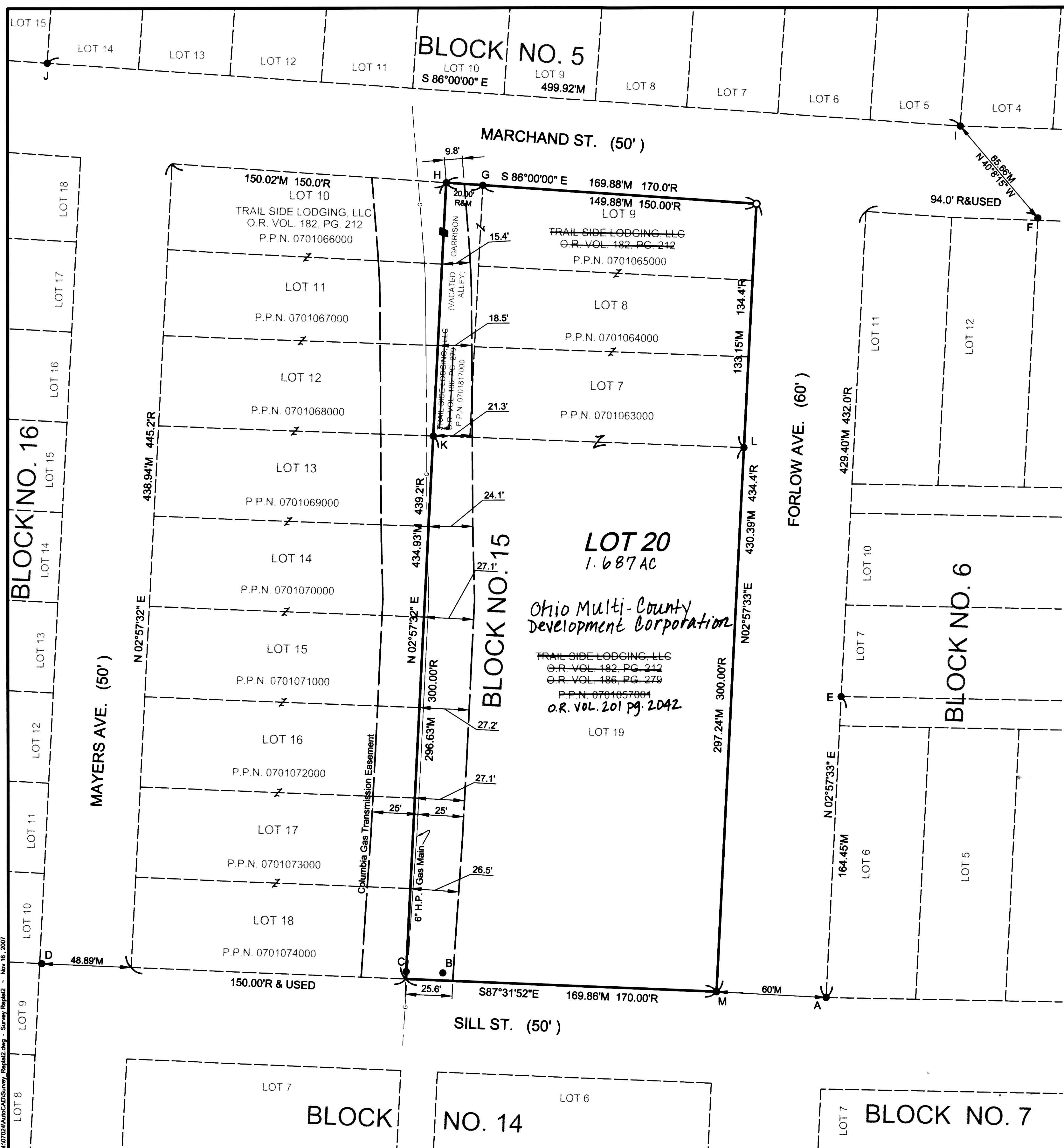
D. Lynn Snyder
D. Lynn Snyder P.S. 7287

1/14/08
Date



DATE Feb. 20, 2008
AUTHOR Judith Mc Fee

ENGINEERING ASSOCIATES, INC.
1935 EAGLE PASS - WOOSTER OHIO 44691
TELEPHONE: (330) 345-6556
FAX: (330) 345-8077



M:\0724\Jucac\CD\Survey_Reg\162.dwg - Nov 16, 2007