

HAWK'S LANDING SUBDIVISION

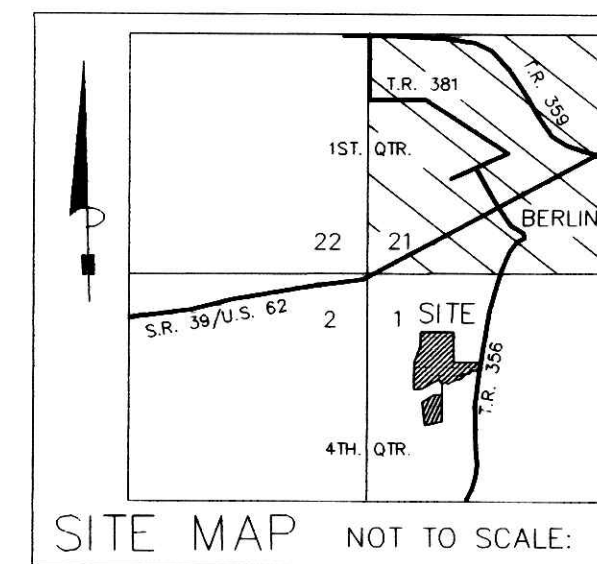
PHASE 2

(FINAL)

DUTCHLAND REALTY, INC.
O.R. 100-22

DEER PATH ESTATES
LOT 1
P.V. 17-834
BETTY ANNE SCHWANE
O.R. 111-476

AGENT:
EAST HOLMES DEVELOPMENT, LTD.
4609 TWP. RD. 371
MILLERSBURG, OHIO 44654
PH. 330-893-2015



Instrument
200700049914 DR Book Page
2 446

200700049914
Filed for Record in
HOLMES COUNTY, OH
SALLY MILLER
05-11-2007 AS 09:48 AM
PLAT LARGE 36x40
DR Book 2 Page 446 - 449

REFERENCES:

O.R. VOL. 46 PAGE 86
O.R. VOL. 100 PAGE 22
O.R. VOL. 111 PAGE 476
O.R. VOL. 178 PAGE 1310

PLAT VOL. 2 PAGE 204
PLAT VOL. 17 PAGE 834
PLAT VOL. 19 PAGES 289 & 665

BEARINGS FROM PLAT VOL. 19 PAGE 289

For erosion and sedimentation control, the landowner will follow the Runwater and Land Development, Ohio's Standards for Stormwater Management and Urban Street Protection. A copy of the Runwater and Land Development, Ohio's Standards is available at the Holmes Soil and Water Conservation District Office: 62 West Clinton Street, Millersburg, Ohio 44654. State regulated permits and plans may be required by the Ohio Environmental Protection Agency to address stormwater and sedimentation issues.

THESE LOTS ARE FOR RESIDENTIAL PURPOSES ONLY, EXCEPT LOT 14, WHICH IS FOR COMMERCIAL OR RESIDENTIAL PURPOSES.

No further splits will be permitted without replatting said lots.

AREA IN LOTS 9, 331 ACRES.
AREA IN ROAD DEDICATION 2,004 ACRES.
TOTAL AREA IN ALLOTMENT 11,335 ACRES.

S.E. CORNER OF LOT 1
WARREN MILLER ALLOT. No. 1
P.V. 2-204

MARtha S. MAST, TRUSTEE
O.R. 46-86

N 88°12'00" E
30.38'

S 07°13'10" W
30.85'

S 07°11'13" W
59.39'

S 02°35'16" W
5.86'

S 88°12'00" W
145.67'

S 88°12'00" W
221.76'

S 71°31'05" W
149.00'

S 71°31'05" W
149.00'

S 71°31'05" W
149.00'

S 71°31'05" W
149.00'

S 71°31'05" W
149.00'

S 71°31'05" W
149.00'

S 71°31'05" W
149.00'

S 71°31'05" W
149.00'

S 71°31'05" W
149.00'

S 71°31'05" W
149.00'

S 71°31'05" W
149.00'

S 71°31'05" W
149.00'

S 71°31'05" W
149.00'

S 71°31'05" W
149.00'

S 71°31'05" W
149.00'

S 71°31'05" W
149.00'

S 71°31'05" W
149.00'

S 71°31'05" W
149.00'

S 71°31'05" W
149.00'

S 71°31'05" W
149.00'

S 71°31'05" W
149.00'

S 71°31'05" W
149.00'

S 71°31'05" W
149.00'

S 71°31'05" W
149.00'

S 71°31'05" W
149.00'

S 71°31'05" W
149.00'

S 71°31'05" W
149.00'

S 71°31'05" W
149.00'

S 71°31'05" W
149.00'

S 71°31'05" W
149.00'

S 71°31'05" W
149.00'

S 71°31'05" W
149.00'

S 71°31'05" W
149.00'

S 71°31'05" W
149.00'

S 71°31'05" W
149.00'

S 71°31'05" W
149.00'

S 71°31'05" W
149.00'

S 71°31'05" W
149.00'

S 71°31'05" W
149.00'

S 71°31'05" W
149.00'

S 71°31'05" W
149.00'

S 71°31'05" W
149.00'

S 71°31'05" W
149.00'

S 71°31'05" W
149.00'

S 71°31'05" W
149.00'

S 71°31'05" W
149.00'

S 71°31'05" W
149.00'

S 71°31'05" W
149.00'

S 71°31'05" W
149.00'

S 71°31'05" W
149.00'

S 71°31'05" W
149.00'

S 71°31'05" W
149.00'

S 71°31'05" W
149.00'

S 71°31'05" W
149.00'

S 71°31'05" W
149.00'

S 71°31'05" W
149.00'

S 71°31'05" W
149.00'

S 71°31'05" W
149.00'

S 71°31'05" W
149.00'

S 71°31'05" W
149.00'

S 71°31'05" W
149.00'

S 71°31'05" W
149.00'

S 71°31'05" W
149.00'

S 71°31'05" W
149.00'

S 71°31'05" W
149.00'

S 71°31'05" W
149.00'

S 71°31'05" W
149.00'

S 71°31'05" W
149.00'

S 71°31'05" W
149.00'

S 71°31'05" W
149.00'

S 71°31'05" W
149.00'

S 71°31'05" W
149.00'

S 71°31'05" W
149.00'

S 71°31'05" W
149.00'

S 71°31'05" W
149.00'

S 71°31'05" W
149.00'

S 71°31'05" W
149.00'

S 71°31'05" W
149.00'

S 71°31'05" W
149.00'

S 71°31'05" W
149.00'

S 71°31'05" W
149.00'

S 71°31'05" W
149.00'

S 71°31'05" W
149.00'

S 71°31'05" W
149.00'

S 71°31'05" W
149.00'

S 71°31'05" W
149.00'

S 71°31'05" W
149.00'

S 71°31'05" W
149.00'

S 71°31'05" W
149.00'

S 71°31'05" W
149.00'

S 71°31'05" W
149.00'

CURVE	DELTA ANGLE	RADIUS	ARC LENGTH	TANGENT	CHORD LENGTH	CHORD BEARING
C5	93°09'44"	60.00'	97.56'	63.41'	87.16'	N 69°42'19" W
C6	47°45'03"	60.00'	50.00'	26.56'	48.57'	S 39°50'17" W
C7	47°45'03"	60.00'	50.00'	26.56'	48.57'	S 07°54'46" E
C8	47°45'03"	60.00'	50.00'	26.56'	48.57'	S 55°39'50" E
C9	74°20'11"	60.00'	77.84'	45.49'	72.50'	N 63°17'33" E

CURVE	DELTA ANGLE	RADIUS	ARC LENGTH	TANGENT	CHORD LENGTH	CHORD BEARING
C1	07°50'22"	249.11'	34.08'	17.07'	34.06'	S 84°16'49" W
C2	16°29'37"	249.11'	71.71'	36.10'	71.46'	S 72°06'50" W
C3	27°24'27"	249.11'	119.16'	60.74'	118.03'	N 12°12'14" W
C4	24°19'59"	249.11'	105.79'	53.71'	105.00'	S 76°02'01" W

DONALD C. BAKER SURVEYING
138 N. CLAY ST.
MILLERSBURG, OHIO 44654
PH. 330-674-4788
FAX 330-674-6027

0 50 100 150
SCALE: 1"=50'
File name: C:\WORK\S-192-05\ERJ JDD-ALG DATE: JUNE 23, 2006
Data: S-168-05 REVISED FEBRUARY 21, 2007

BERLIN TOWNSHIP
4TH. QTR., LOT 1
T-9 N; R-6 W
HOLMES COUNTY, OHIO

5/8" REBAR FOUND
UNLESS OTHERWISE NOTED
5/8" REBAR WITH I.D. CAP SET
I.D. CAP MARKED "BAKER 6938"

TRANSFER NOT NECESSARY
DATE May 11, 2007
AUDITOR Jackie McKee jls



NOTE: SIGN IN PERMANENT BLACK INK.

CERTIFICATE OF OWNERSHIP AND DEDICATION
We hereby certify that we are the owners of the property shown and described herein and that we hereby adopt this plan of subdivision with our free consent and establish the minimum building restrictions.
Jan 27 page 3/15/07
EAST HOLMES DEVELOPMENT, LTD. DATE

CERTIFICATE OF APPROVAL OF WATER SUPPLY AND SEWAGE TREATMENT SYSTEMS
I hereby certify that the Subdivision plat entitled HAWK'S LANDING SUBDIVISION, PHASE 2 meets the requirements of the Board of Health for water supply and sewage treatment and is hereby approved for recording. The issuance of permits to install a private water system and on-site sewage treatment system for any lot is dependent on a site specific evaluation prior to the start of any construction.
Mcadden 3/15/2007
Heathly Commissioner DATE

CERTIFICATE OF APPROVAL BY THE HOLMES SOIL AND WATER CONSERVATION DISTRICT
I hereby certify that I have approved the subdivision plat and/or agreements or provisions for sedimentation and erosion control as stated or shown herein.
Jo Christine 3/15/07
Holmes Soil and Water Conservation District DATE

CERTIFICATE OF THE APPROVAL BY THE COUNTY COMMISSIONERS
I hereby certify that the Holmes County Commissioners have approved the subdivision plat as shown herein.
606 3/16/07
Chairman, County Commissioners DATE

CERTIFICATE OF THE APPROVAL OF PLAT
I hereby certify that I have approved the plat shown herein.
3/15/07
County Engineer DATE

CERTIFICATE OF APPROVAL FOR RECORDING
I hereby certify that the subdivision plat shown herein has been found to comply with the subdivision regulations for Holmes County, Ohio, with the exception of such variances, if any, as presented in the minutes of the Holmes County Planning Commission and that it has been approved for recording in the office of the County Recorder.
3/15/07
Holmes County Planning Commission DATE

CERTIFICATE OF ACCURACY
I hereby certify that the plan shown and described herein is a true and correct survey to the accuracy required by the Holmes County Planning Commission and that the monuments have been placed as shown herein.
3/15/07
Donald C. Baker P.S. 6938 DATE