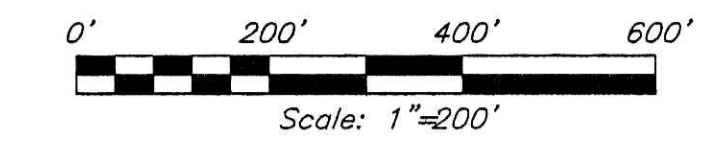




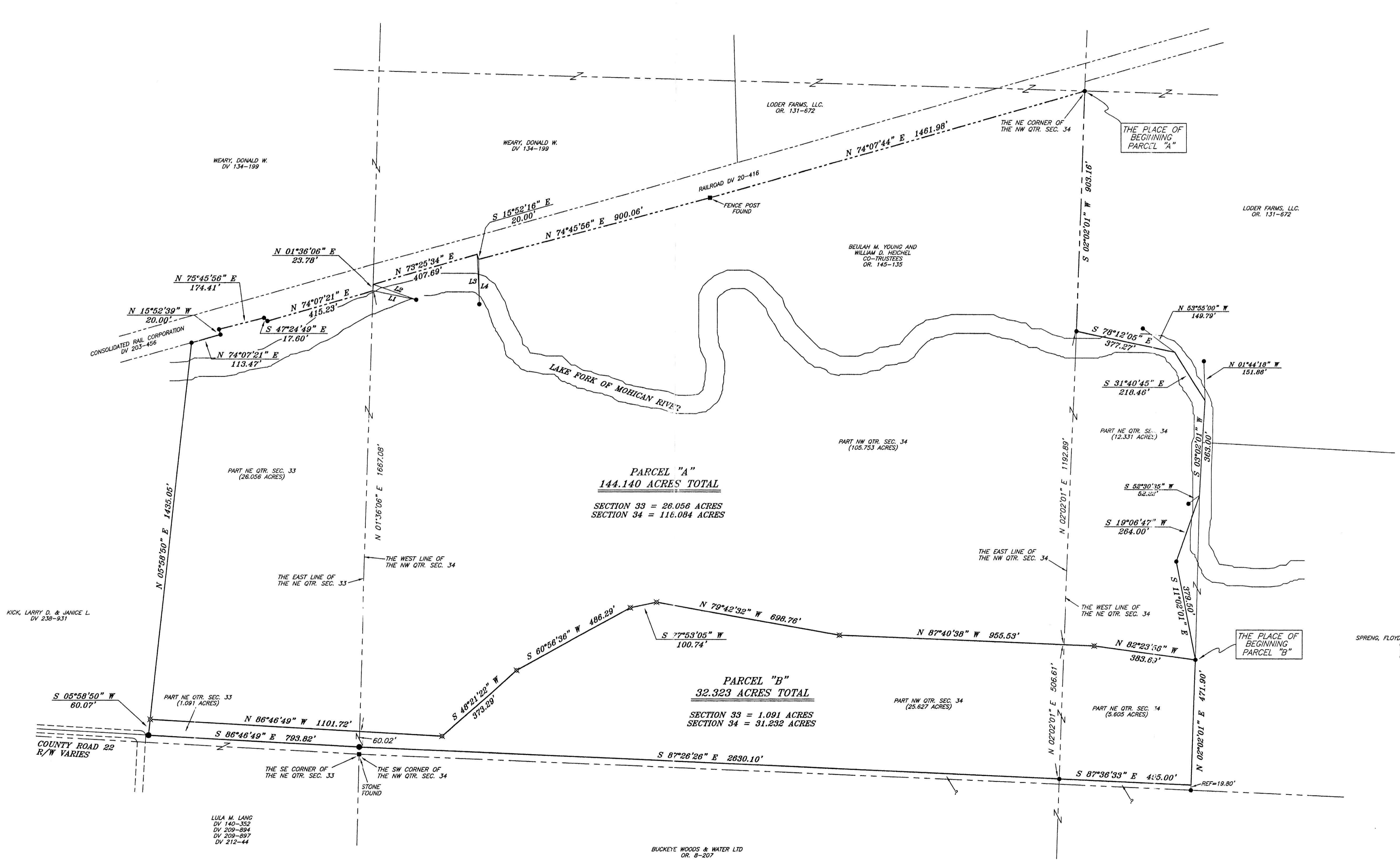
BEARINGS ARE BASED ON AN ASSUMED MERIDIAN

LINE	BEARING	DISTANCE
L1	S 78°28'26" E	166.15'
L2	S 70°38'23" E	171.85'
L3	S 02°28'13" E	189.10'
L4	S 00°54'19" E	189.71'



ERROR OF CLOSURE IS LESS THAN 1.5000

- REFERENCES:
 OR 145-37
 OR 131-672
 OR 136-507
 OR 136-511
 OR 158-848
 OR 134-139
 DEED VOL. 238-931
 DEED VOL. 203-456
 DEED VOL. 20-414
 DEED VOL. 20-416
 PLAT VOL. 18-503
 PLAT VOL. 18-465
 PLAT VOL. 11-198
 PLAT VOL. 14-75

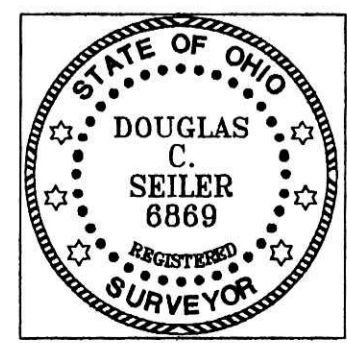


200500039493
 Filed for Record in
 HOLMES COUNTY, OH
 10-11-2005 at 09:35 AM
 PLAT LARGE 36.40
 DR Book 2 Page 407
 CUY 153 pages 25.20

200500039493
 HOLMES CTY
 HILLERSBURG, OH

I HEREBY STATE THAT THIS SURVEY WAS MADE IN ACCORDANCE WITH CHAPTER 4733-37 OF THE OHIO ADMINISTRATIVE CODE.

DOUGLAS C. SEILER
 SURVEYOR



- LEGEND**
- IRON PIN FOUND
 - ⊠ MAG NAIL SPIKE SET
 - ▲ RAILROAD SPIKE FOUND
 - ⊗ 5/8" IRON PIN SET WITH CAP STAMPED "SEILER AND CRAIG, INC."

PLAT APPROVED
 9/21/2005 DCS

SURVEY PLAT FOR
 PROPERTY TRANSFER
 PT. NE & NW QTR. SEC. 34 AND PT. NE QTR. SEC. 33, T-20 N, R-15 W WASHINGTON TWP., HOLMES COUNTY, OHIO
 DATE: AUGUST 4, 2005 SCALE: 1"=200'
 NOLLETT