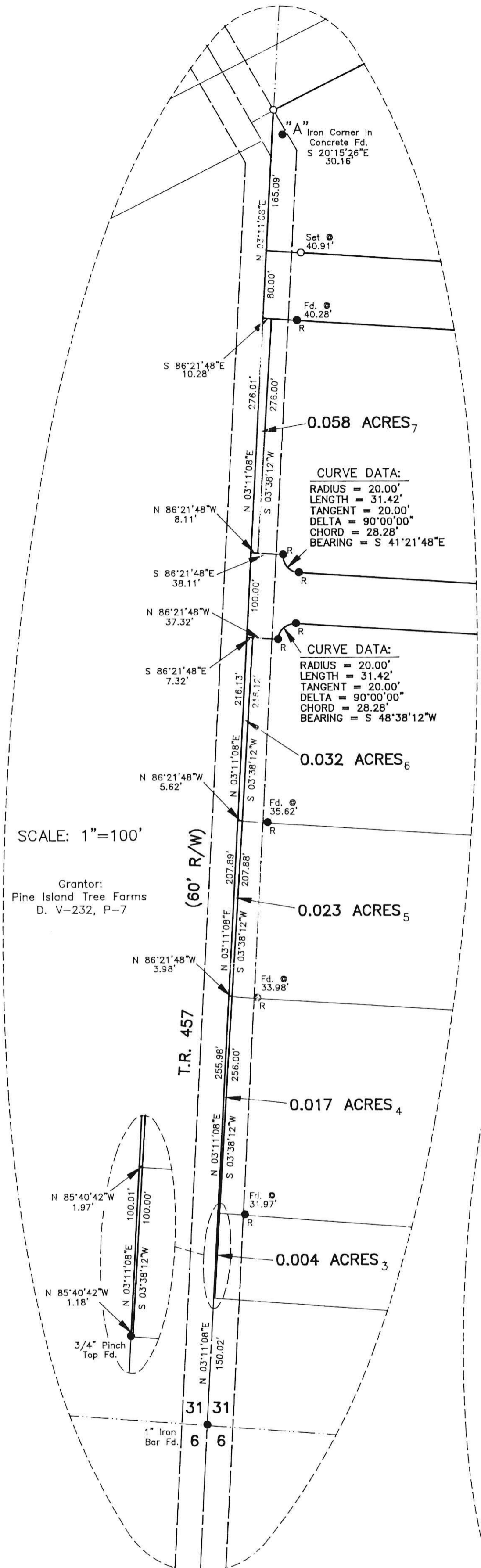


**SURVEY FOR PINE ISLAND TREE FARMS**  
 & CORRECTION OF QUARTER SECTION LINE FOR NEIGHBORING PARCELS

NE & SE QUARTER OF SECTION 31 &  
 NW & SW QUARTER OF SECTION 32  
 T-20-N, R-15-W  
 VILLAGE OF LOUDONVILLE  
 WASHINGTON TOWNSHIP  
 HOLMES COUNTY, OHIO

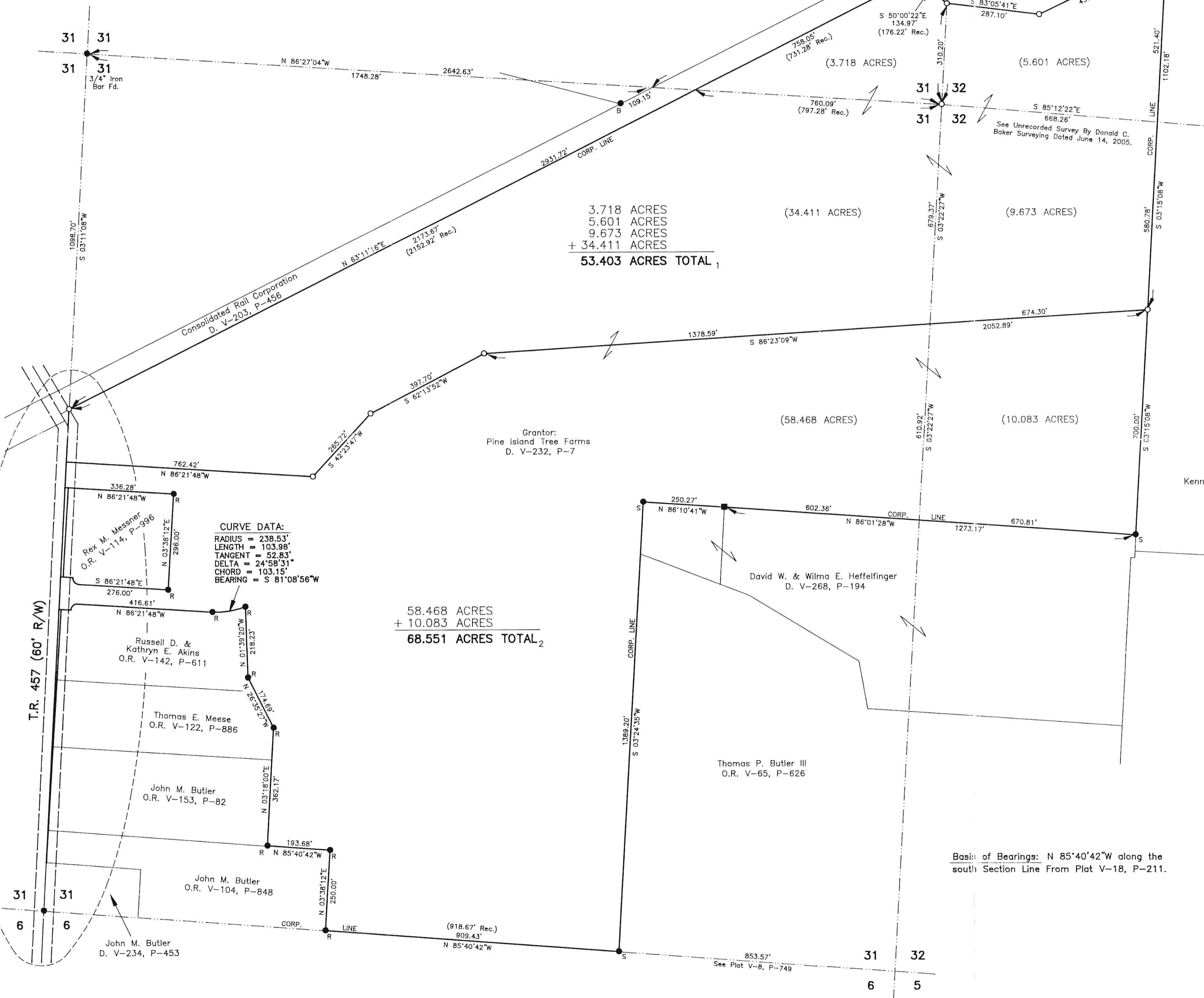
"A" Iron corner found in concrete was presumed to be on the Quarter Section Line from Plat V-13, P-79 & Plat V-13, P-195. In reality it is 12.00' east of the Quarter Section Line and is now being corrected.



SCALE: 1"=100'

Grantor:  
 Pine Island Tree Farms  
 D. V-232, P-7

Approved This 7th Day of September, 2005 By The Loudonville  
 Mayor Paul Bullant

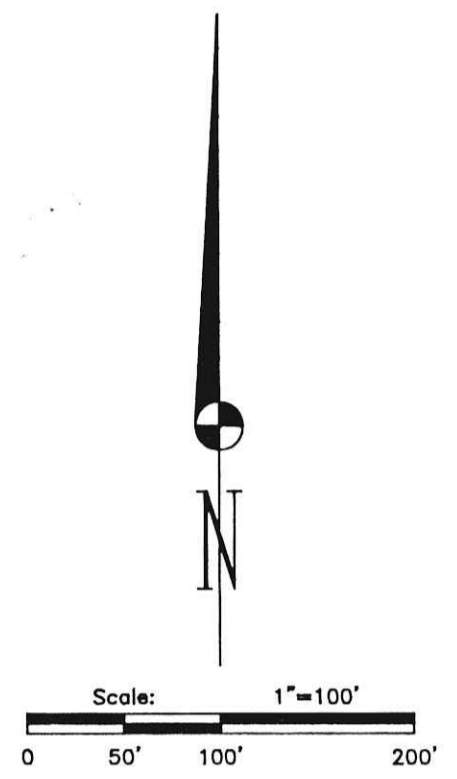


3.718 ACRES  
 5.601 ACRES  
 9.673 ACRES  
 + 34.411 ACRES  
**53.403 ACRES TOTAL<sub>1</sub>**

58.468 ACRES  
 + 10.083 ACRES  
**68.551 ACRES TOTAL<sub>2</sub>**

Grantor:  
 Pine Island Tree Farms  
 D. V-232, P-7

Instrument 200500039197 OR 2 404  
 Book 02 Page 404  
 200500039197  
 Filed for Record in  
 HOLMES COUNTY, OH  
 SALLY MILLER  
 09-23-2005 At 01:35 pm.  
 PLAT LARGE 86.40  
 OR Book 2 Page 404 - 404  
 OKV 18 3 page  
 200500039197  
 TITLE  
 MILLERSBURG, OH



- Stone Corner Found
- 5/8" Bar Found With Ident Cap "RUDOLPH" Unless Otherwise Noted.
- 5/8" Bar Found With Ident Cap "BAKER" Unless Otherwise Noted.
- 5/8" Bar Found With Ident Cap "SANFORD" Unless Otherwise Noted.
- 5/8" x 30" Bar With Yellow Plastic Cap Marked RUDOLPH Set 6449

- REFERENCES
- P. 8-749
  - P. 13-79
  - P. 13-195
  - P. 18-211
  - P. 18-308
  - P. 18-387
  - P. 18-557
  - P. 19-24
  - D. V-232, P-7
  - D. V-268, P-194
  - D. V-203, P-456
  - O.R. V-65, P-626

I Certify This Survey And Plat To Be Correct To The Best Of My Knowledge.  
 Date 8/31/05 Ronald G. Rudolph  
 Ronald G. Rudolph P.S. No. 6449

**R.G. Rudolph SURVEYING, INC.**  
 223 W. Liberty St.  
 Wooster, Ohio 44691  
 (330) 262-0798  
 Job No. 14377-6



PLAT APPROVED  
 9/13/2005