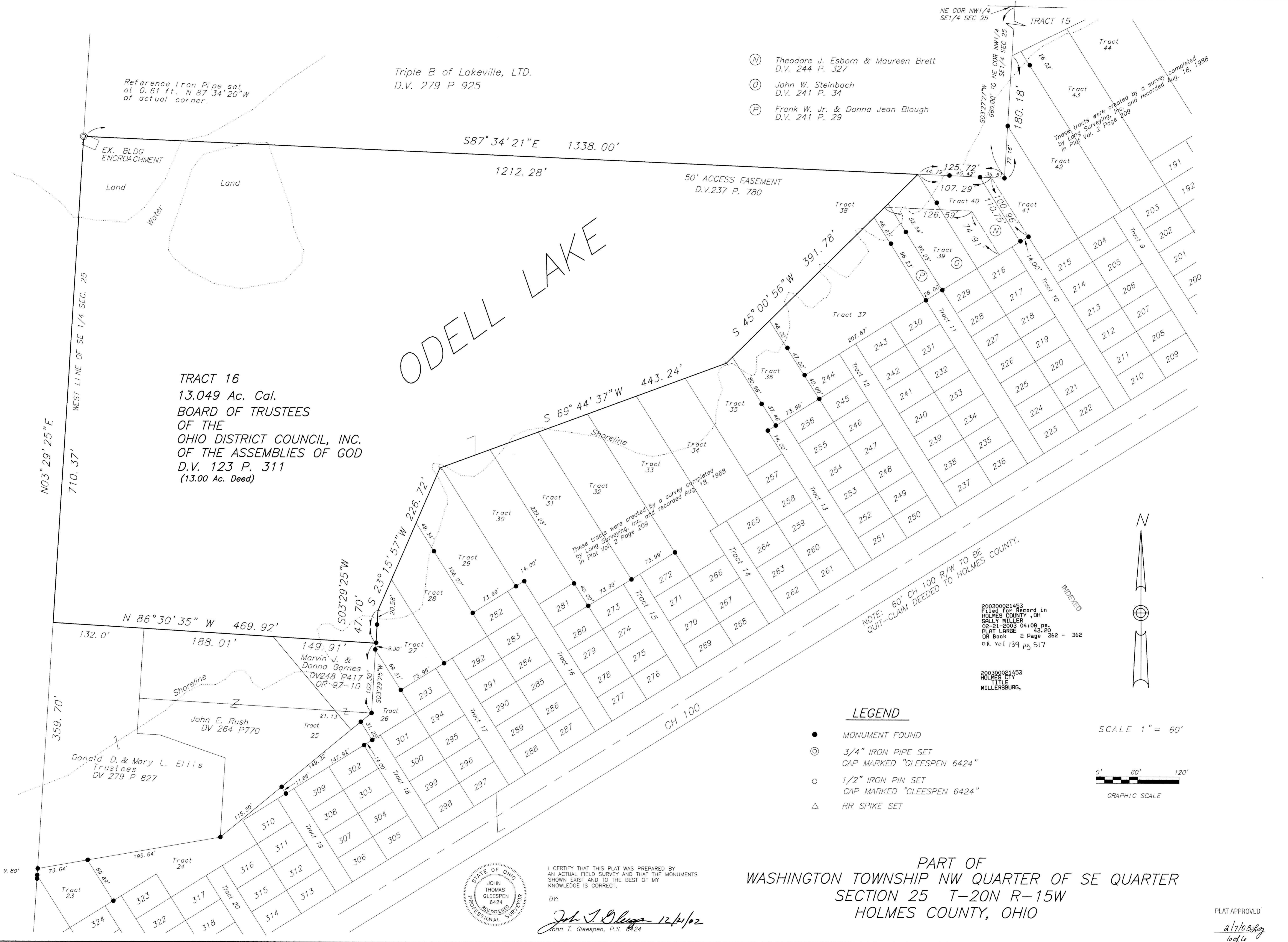


NO.	REVISION	DATE



- (N) Theodore J. Esborn & Maureen Brett
D.V. 244 P. 327
- (O) John W. Steinbach
D.V. 241 P. 34
- (P) Frank W. Jr. & Donna Jean Blough
D.V. 241 P. 29

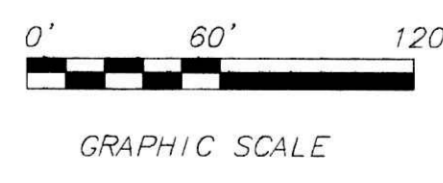
200300021453
Filed for Record in
HOLMES COUNTY, OH
SALLY MILLER
02-21-2003 04:08 pm
PLAT LARGE 43-20
OR Book 2 Page 362 - 362
OK vol 139 pg 517

200300021453
HOLMES COUNTY
TITLE
MILLERSBURG,

LEGEND

- MONUMENT FOUND
- ⊙ 3/4" IRON PIPE SET
CAP MARKED "GLEESPEN 6424"
- 1/2" IRON PIN SET
CAP MARKED "GLEESPEN 6424"
- △ RR SPIKE SET

SCALE 1" = 60'



I CERTIFY THAT THIS PLAT WAS PREPARED BY AN ACTUAL FIELD SURVEY AND THAT THE MONUMENTS SHOWN EXIST AND TO THE BEST OF MY KNOWLEDGE IS CORRECT.

BY: *John T. Gleespen* 12/10/02
John T. Gleespen, P.S. 6424



PART OF
WASHINGTON TOWNSHIP NW QUARTER OF SE QUARTER
SECTION 25 T-20N R-15W
HOLMES COUNTY, OHIO