

LEGEND

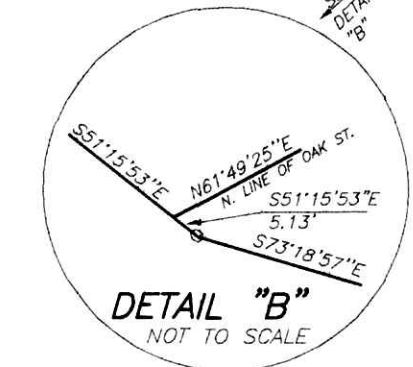
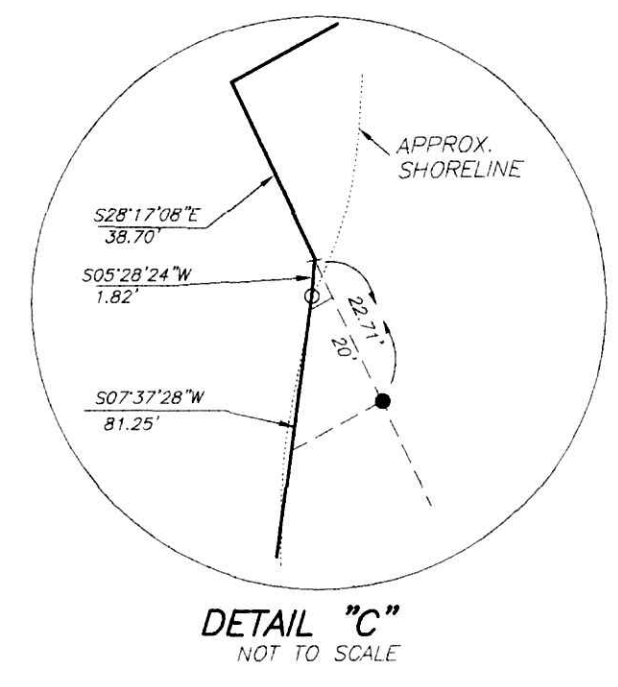
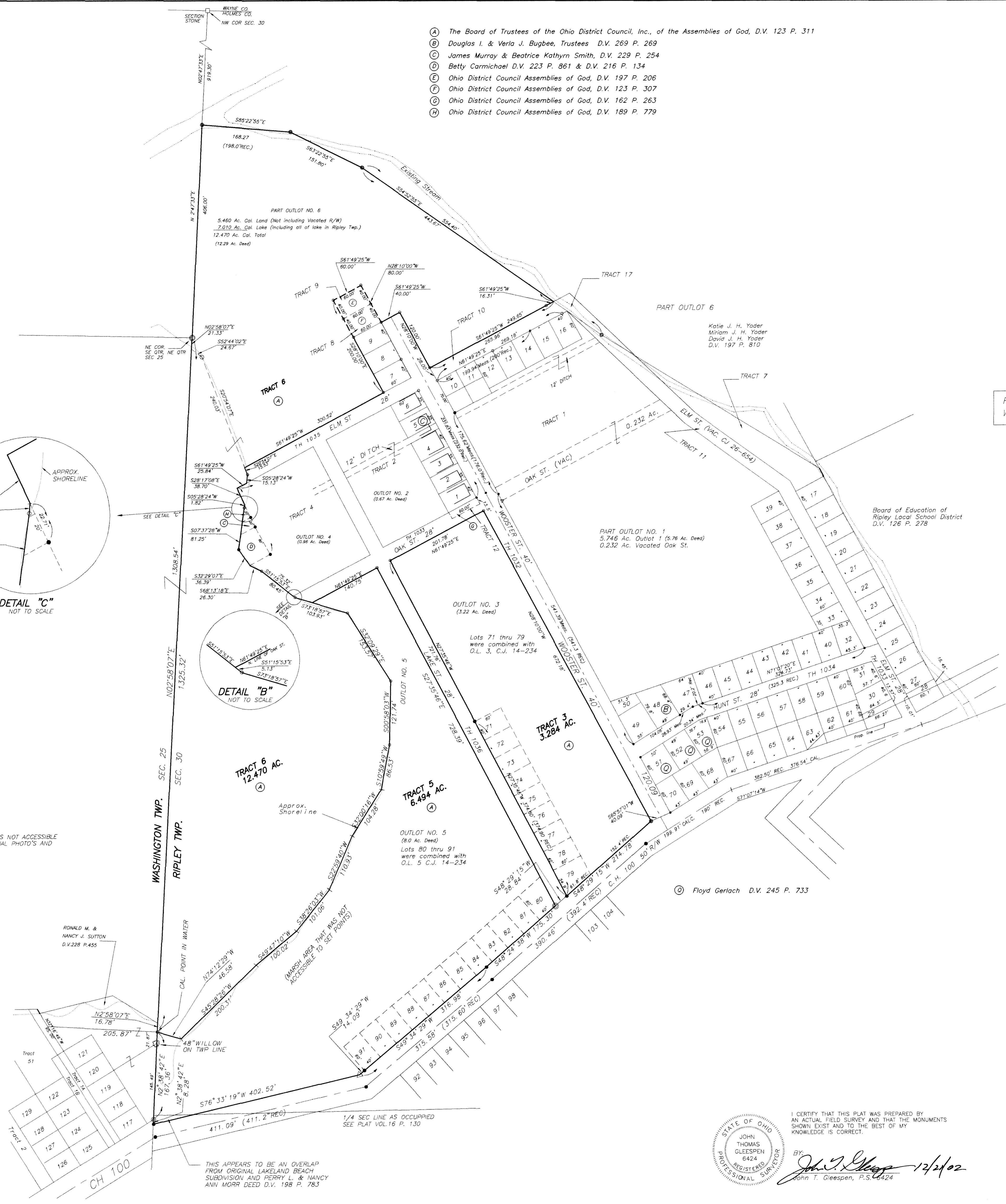
- MONUMENT FOUND
- ⊙ 3/4" IRON PIPE SET
CAP MARKED "GLEESPEN 6424"
- 1/2" IRON PIN SET
CAP MARKED "GLEESPEN 6424"
- △ RR SPIKE SET

REFERENCE BEARING PLAT VOL. 1 PG. 379 & 380
WOOSTER ST. N. 28°10' W

200300021450
Filed for Record in
HOLMES COUNTY, OH
SALLY MILLER
02-21-2003 04:08 pm
PLAT LARGE 43.20
OR Book 2 Page 359 - 359
CK vol 139 pg 517

200300021450
TITLE
MILLERSBURG,
INDEXED

- (A) The Board of Trustees of the Ohio District Council, Inc., of the Assemblies of God, D.V. 123 P. 311
- (B) Douglas I. & Verla J. Bugbee, Trustees D.V. 269 P. 269
- (C) James Murray & Beatrice Kathryn Smith, D.V. 229 P. 254
- (D) Betty Carmichael D.V. 223 P. 861 & D.V. 216 P. 134
- (E) Ohio District Council Assemblies of God, D.V. 197 P. 206
- (F) Ohio District Council Assemblies of God, D.V. 123 P. 307
- (G) Ohio District Council Assemblies of God, D.V. 162 P. 263
- (H) Ohio District Council Assemblies of God, D.V. 189 P. 779

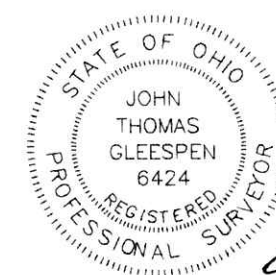


NOTE: LOCATION OF SHORELINE, WHERE ACCESSIBLE, WAS SURVEYED, WHERE IT WAS NOT ACCESSIBLE IT WAS TAKEN FROM VARIOUS MAPS AT THE COUNTY AUDITOR'S OFFICE, AERIAL PHOTO'S AND PREVIOUS SURVEYS OF RECORD.

RONALD M. & NANCY J. SUTTON
D.V. 228 P. 455

THIS APPEARS TO BE AN OVERLAP FROM ORIGINAL LAKELAND BEACH SUBDIVISION AND PERRY L. & NANCY ANN MORR DEED D.V. 198 P. 783

⊙ Floyd Gerlach D.V. 245 P. 733



I CERTIFY THAT THIS PLAT WAS PREPARED BY AN ACTUAL FIELD SURVEY AND THAT THE MONUMENTS SHOWN EXIST AND TO THE BEST OF MY KNOWLEDGE IS CORRECT.

BY: *John T. Gleespen* 12/2/02
John T. Gleespen, P.S. 6424

LOCATED IN
LAKELAND BEACH SUBDIVISION
(PLAT VOL. 1 PAGES 379 & 380)
RIPLEY TOWNSHIP NW & SW QUARTER
SECTION 30 T-18N R-14W
HOLMES COUNTY, OHIO

2/1/03 JG
3 of 6