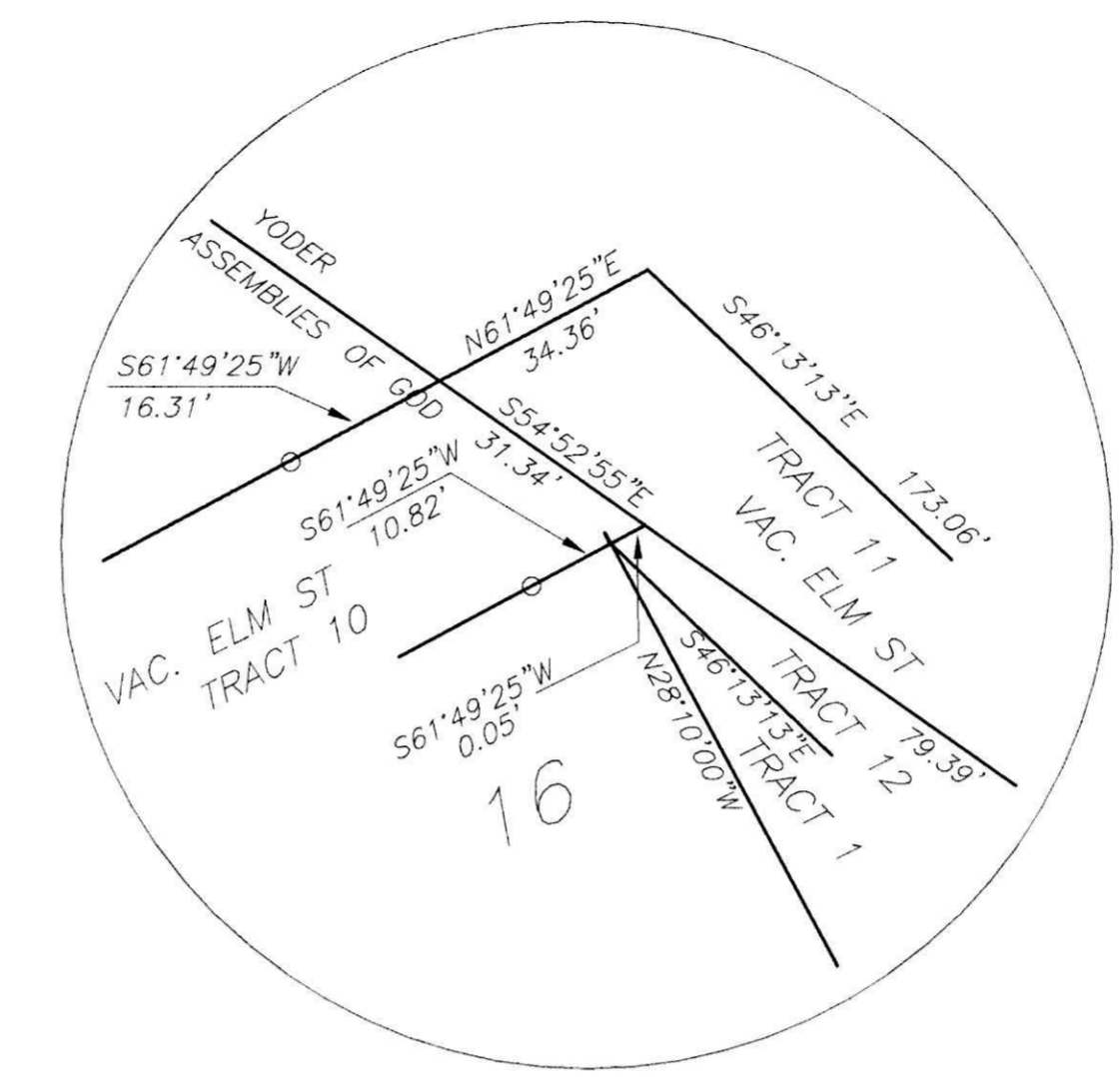


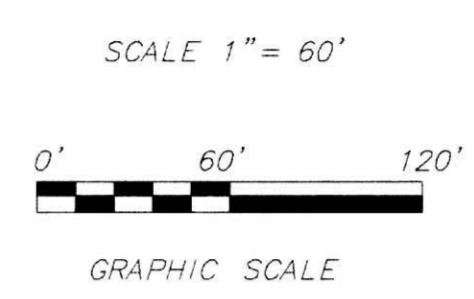
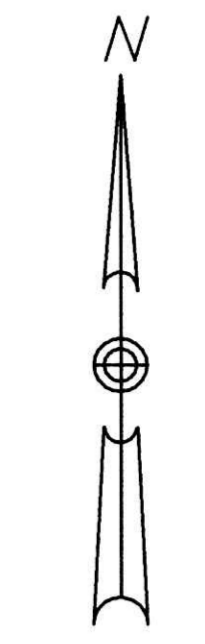
- (A) The Board of Trustees of the Ohio District Council, Inc., of the Assemblies of God, D.V. 123 P. 311
- (B) Douglas I. & Verla J. Bugbee, Trustees D.V. 269 P. 269
- (C) James Murray & Beatrice Kathryn Smith, D.V. 229 P. 254
- (D) Betty P. Carmichael, et. al., OR 65 P. 56
- (E) Ohio District Council, Inc., Assemblies of God, D.V. 197 P. 206
- (F) Ohio District Council, Inc., of the Assemblies of God, D.V. 123 P. 307
- (G) Ohio District Council Incorporated, Assemblies of God, D.V. 162 P. 263
- (H) Ohio District Council, Inc., Assemblies of God, D.V. 189 P. 779
- (I) Ohio District Council, Inc., of the Assemblies of God, C.J. 26 P. 654 (Vacated Street)

KEYED NOTES

- ⚠ D.V. 103 P. 153 Corrected deed of lot 10 to 35' X 70' instead of 40' X 60' as given on original deed D.V. 92 P. 98
- ⚠ D.V. 103 P. 152 correction to size of lot 11 from original deed D.V. 92 P. 80
- ⚠ Lots 5 & 6 by original plat are 35' X 60'. Deeds call for 40' X 60'. Distance measured along R/W from Elm St. to Oak St. indicate they should be 35' in width.



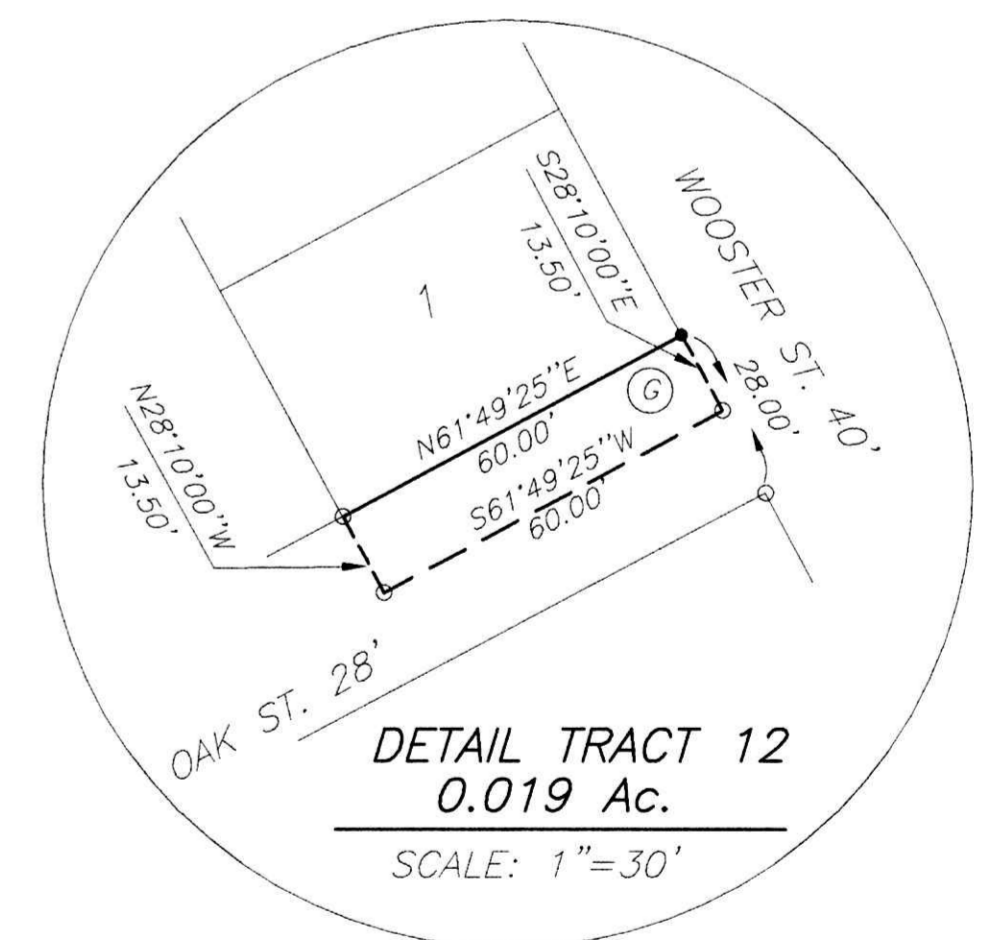
DETAIL "A" NOT TO SCALE



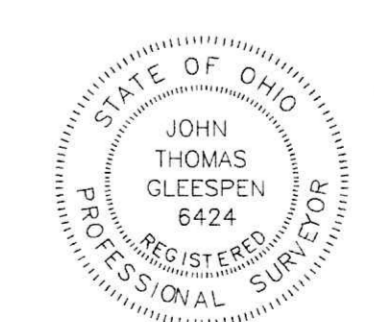
- LEGEND
- MONUMENT FOUND
 - ⊙ 3/4" IRON PIPE SET CAP MARKED "GLEESPEN 6424"
 - 1/2" IRON PIN SET CAP MARKED "GLEESPEN 6424"
 - △ RR SPIKE SET

REFERENCE BEARING PLAT VOL. 1 PG. 379 & 380 WOOSTER ST. N. 28°10' W

LOCATED IN LAKELAND BEACH SUBDIVISION (PLAT VOL. 1 PAGES 379 & 380) RIPLEY TOWNSHIP NW & SW QUARTER SECTION 30 T-18N R-14W HOLMES COUNTY, OHIO



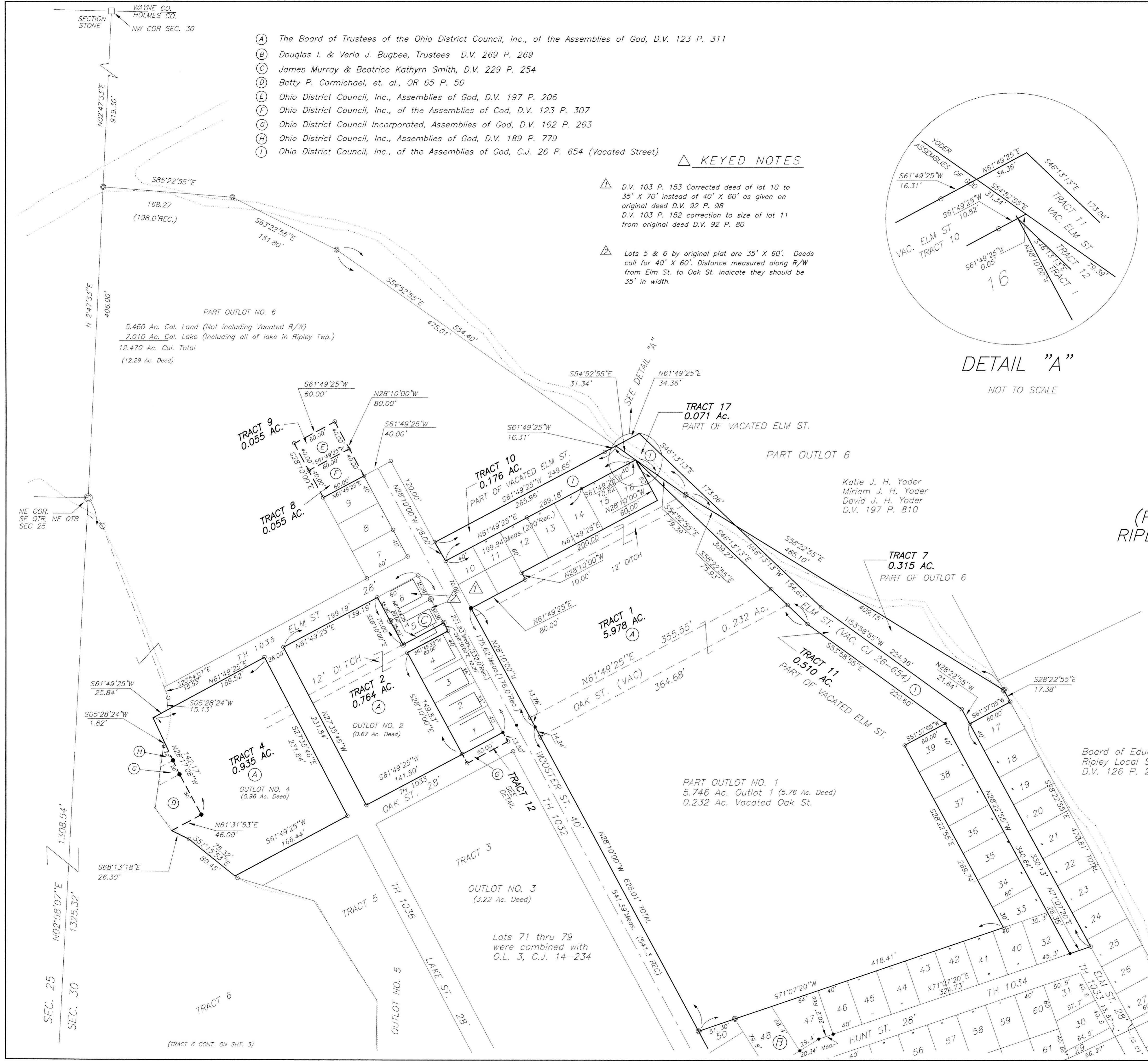
DETAIL TRACT 12 0.019 AC. SCALE: 1"=30'



I CERTIFY THAT THIS PLAT WAS PREPARED BY AN ACTUAL FIELD SURVEY AND THAT THE MONUMENTS SHOWN EXIST AND TO THE BEST OF MY KNOWLEDGE IS CORRECT.

BY: John T. Gleespen 12/21/02 John T. Gleespen, P.S. 6424

PLAT APPROVED 2171032bg 2/6



(TRACT 6 CONT. ON SHET. 3)