

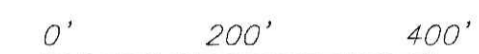
200300021448
Filed for Record in
HOLMES COUNTY, OH
SALLY MILLER
02-21-2003 04:08 pm
PLAT LARGE 43.20
OR Book 2 Page 357 - 357

200300021448
HOLMES CITY
TITLE
MILLERSBURG,

N



SCALE 1" = 200'



GRAPHIC SCALE

TRACT NUMBERS REFER TO THE ACTUAL
PARCELS OF LAND THAT WERE SURVEYED
AS PART OF THIS PLAT.

Section 30 T-18 R-14 Ripley Twp.
Section 25 T-20 R-15 Washington Twp.
Holmes County, Ohio

SHEET INDEX

INDEX SHEET	SHEET 1
TRACTS 1,2,4,7,8,9,10,11,12,17	SHEET 2
TRACTS 3,5,6	SHEET 3
TRACTS 13,14	SHEET 4
TRACT 15	SHEET 5
TRACT 16	SHEET 6

ASSEMBLIES OF GOD DEED REFERENCES:

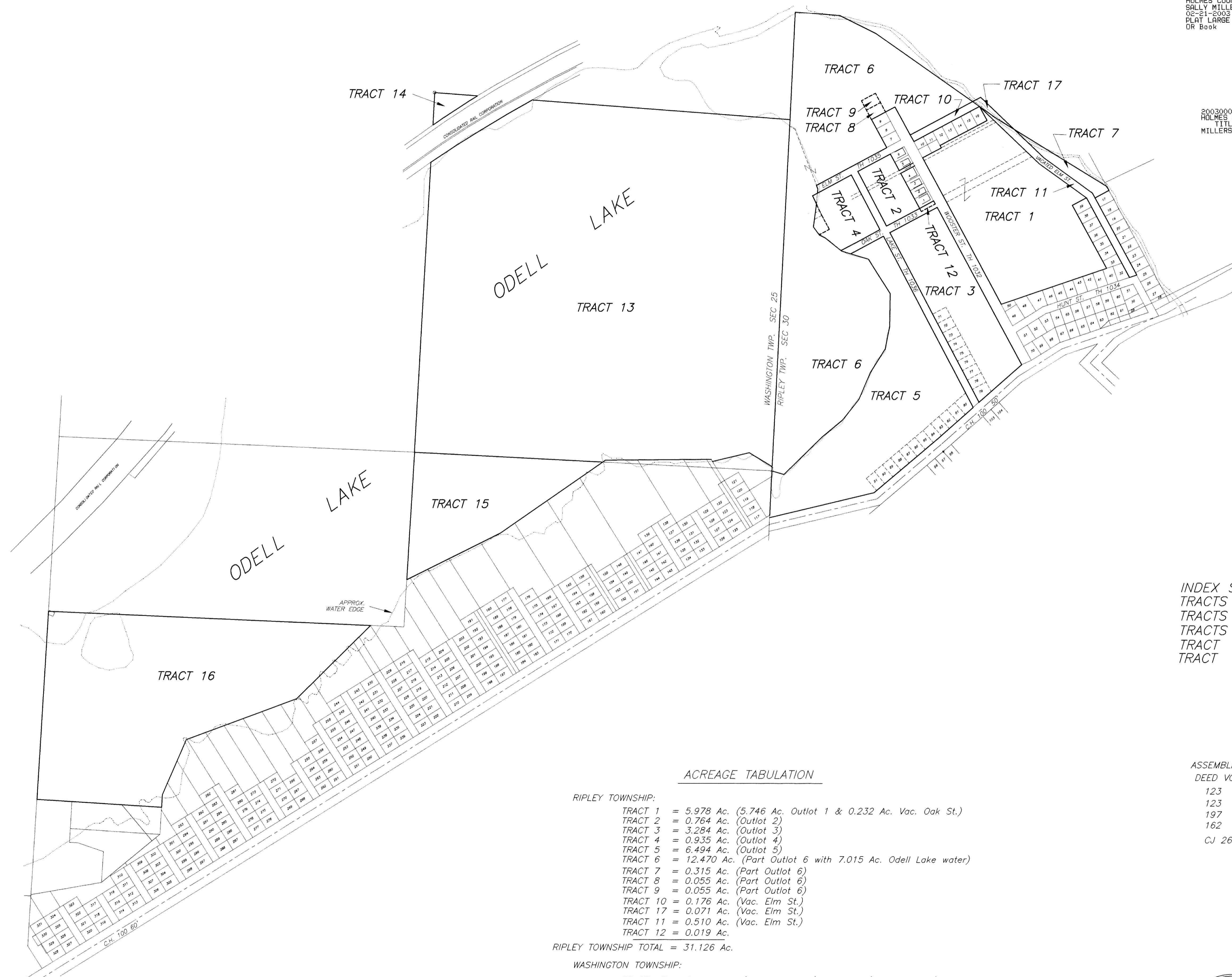
DEED VOL.	PAGE	TRACT NO.
123	311	1,2,3,4,5,6,13,14,15,16,
123	307	TRACT NO. 8
197	246	TRACT NO. 9
162	263	TRACT NO. 12
CJ 26	654	TRACT NO. 10,11,&17

I HEREBY CERTIFY THAT THIS PLAT WAS PREPARED BY AN ACTUAL
FIELD SURVEY AND THAT THE MONUMENTS SHOWN EXIST AND TO
THE BEST OF MY KNOWLEDGE IS CORRECT.



John T. Gleespen 12/21/02
John Thomas Gleespen, P.S. 6424

2/1/03
196



ACREAGE TABULATION

RIPLEY TOWNSHIP:

- TRACT 1 = 5.978 Ac. (5.746 Ac. Outlot 1 & 0.232 Ac. Vac. Oak St.)
- TRACT 2 = 0.764 Ac. (Outlot 2)
- TRACT 3 = 3.284 Ac. (Outlot 3)
- TRACT 4 = 0.935 Ac. (Outlot 4)
- TRACT 5 = 6.494 Ac. (Outlot 5)
- TRACT 6 = 12.470 Ac. (Part Outlot 6 with 7.015 Ac. Odell Lake water)
- TRACT 7 = 0.315 Ac. (Part Outlot 6)
- TRACT 8 = 0.055 Ac. (Part Outlot 6)
- TRACT 9 = 0.055 Ac. (Part Outlot 6)
- TRACT 10 = 0.176 Ac. (Vac. Elm St.)
- TRACT 17 = 0.071 Ac. (Vac. Elm St.)
- TRACT 11 = 0.510 Ac. (Vac. Elm St.)
- TRACT 12 = 0.019 Ac.

RIPLEY TOWNSHIP TOTAL = 31.126 Ac.

WASHINGTON TOWNSHIP:

- TRACT 13 = 39.881 Ac. (Part of SE 1/4 of NE 1/4 of Sec. 25)
- TRACT 14 = 0.227 Ac. (Part of SE 1/4 of NE 1/4 of Sec. 25)
- TRACT 15 = 4.212 Ac. (Part of NE 1/4 of SE 1/4 of Sec. 25)
- TRACT 16 = 13.049 Ac. (Part of NW 1/4 of SE 1/4 of Sec. 25)

WASHINGTON TOWNSHIP TOTAL = 57.369 Ac.