

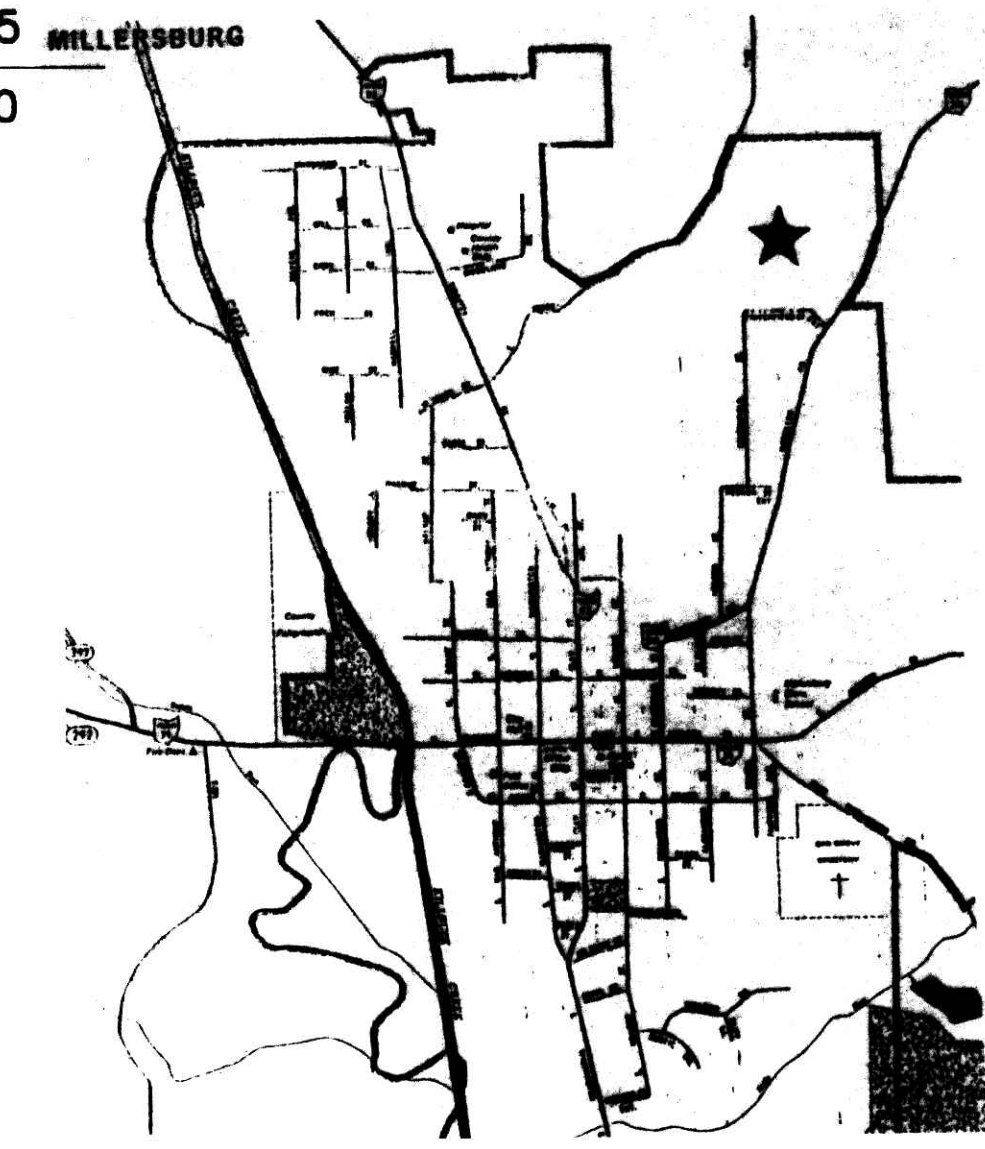
TRANSFER NOT NECESSARY  
 DATE 8-13-01 Kbb  
 AUDITOR Jackie Fricke



0' 25' 50' 100'  
 SCALE: 1" = 50'

- PIPE OR PIN FOUND
- 5/8" REBAR SET WITH I.D. CAP MARKED SJL, INC

36 35  
 41 40



SUBJECT TO COVENANTS AND RESTRICTIONS  
 RECORDED IN OFFICIAL RECORD 84 PAGE 261

# The Ledges Subdivision Phase 1

Part of Lot 41; 1st Quarter  
 T-9N ; R-7W  
 Hardy Township,  
 Village of Millersburg  
 Holmes County, Ohio

300100009947  
 Filed for Record in  
 HOLMES COUNTY, OH  
 SALLY MILLER  
 08-13-2001 10:06 am  
 PLAT LARGE 43.20  
 DR Book 2 Page 337

300100009947  
 MILLER &  
 MAST ATTYS  
 MILLERSBURG,

LOTS 1.358 AC.  
 + ROADWAY 0.397 AC.  
 SUBDIVISION 1.755 AC.

CURVE#	RADIUS	LENGTH	CHORD	CHORD BEARING	DELTA ANGLE	TANGENT
C1	20.00'	31.42'	28.28'	N 43°40'24" W	90°00'00"	20.00'
C2	20.00'	31.42'	28.28'	S 48°19'36" W	90°00'00"	20.00'
C3	20.00'	31.42'	28.28'	N 43°40'24" W	90°00'00"	20.00'
C4	225.00'	18.58'	18.57'	S 01°02'11" E	04°43'50"	9.29'
C5	175.00'	14.45'	14.44'	S 01°02'11" E	4°43'48"	7.23'
C6	175.00'	45.82'	45.69'	S 10°54'06" E	15°00'01"	23.04'
C7	175.00'	60.26'	59.96'	S 08°32'15" E	19°43'43"	30.43'
C8	200.00'	16.50'	16.50'	S 01°02'15" E	04°43'41"	8.26'

OWNER:  
 SCHLABACH BUILDERS, LTD.  
 O.R. 22, PG. 748

Sign in **BLACK** ink only. Print names under all signatures.  
 Know all men by these presents that we the undersigned Owners of the land shown on this plat have caused the same to be surveyed and replatted as shown and do hereby acknowledge the same to be our own free act and deed. And do hereby dedicate to public use the streets as shown hereon.

Witness our hands this 27 day of June, 2001.  
 OWNERS: Schlabach Builders, Ltd.  
 By Roy A. Schlabach, Authorized Member  
 Diane Stromme Mast  
 Ruth E. Cissney

STATE OF OHIO SS:  
 COUNTY OF Holmes  
 Before me, a Notary Public, in and for said county and state, personally appeared the above named Owner, who acknowledged that he did sign the foregoing plat and that the same was his own free act and deed.

Signed and sealed this 27 day of June, 2001.

Diane Stromme Mast  
 Notary Public  
 My Commission Expires 06/30/03  
 My Commission Has No Expiration Date  
 Section 147.03 R.C.

Certificate of Approval for Recording  
 I hereby certify that the subdivision shown hereon complies with the subdivision regulations of the Village of Millersburg, Ohio, and that this plat is approved for recording in the office of the County Recorder.

this 11 day of July, 2001  
 Millersburg Planning Commission

Certificate of Acceptance of Dedication:  
 The subdivision as shown on this plat and easements as noted in graphic symbols were accepted for dedication by the council of the Village of Millersburg, Ohio by Ordinance  
 SEE OFFICIAL RECORD VOL 81 PG 261  
 SEE ATTACHED AGREEMENT

Approved by the Village of Millersburg, Ohio  
 this 9 day of August, 2001

Received for Transfer:  
 this \_\_\_ day of \_\_\_, 20\_\_\_  
 Holmes County Tax Map Office

Transferred:  
 this \_\_\_ day of \_\_\_, 20\_\_\_  
 Holmes County Auditor

Filed for Record:  
 this \_\_\_ day of \_\_\_, 20\_\_\_  
 Holmes County Recorder

# \_\_\_ @ \_\_\_ in Vol. \_\_\_ Pg. \_\_\_

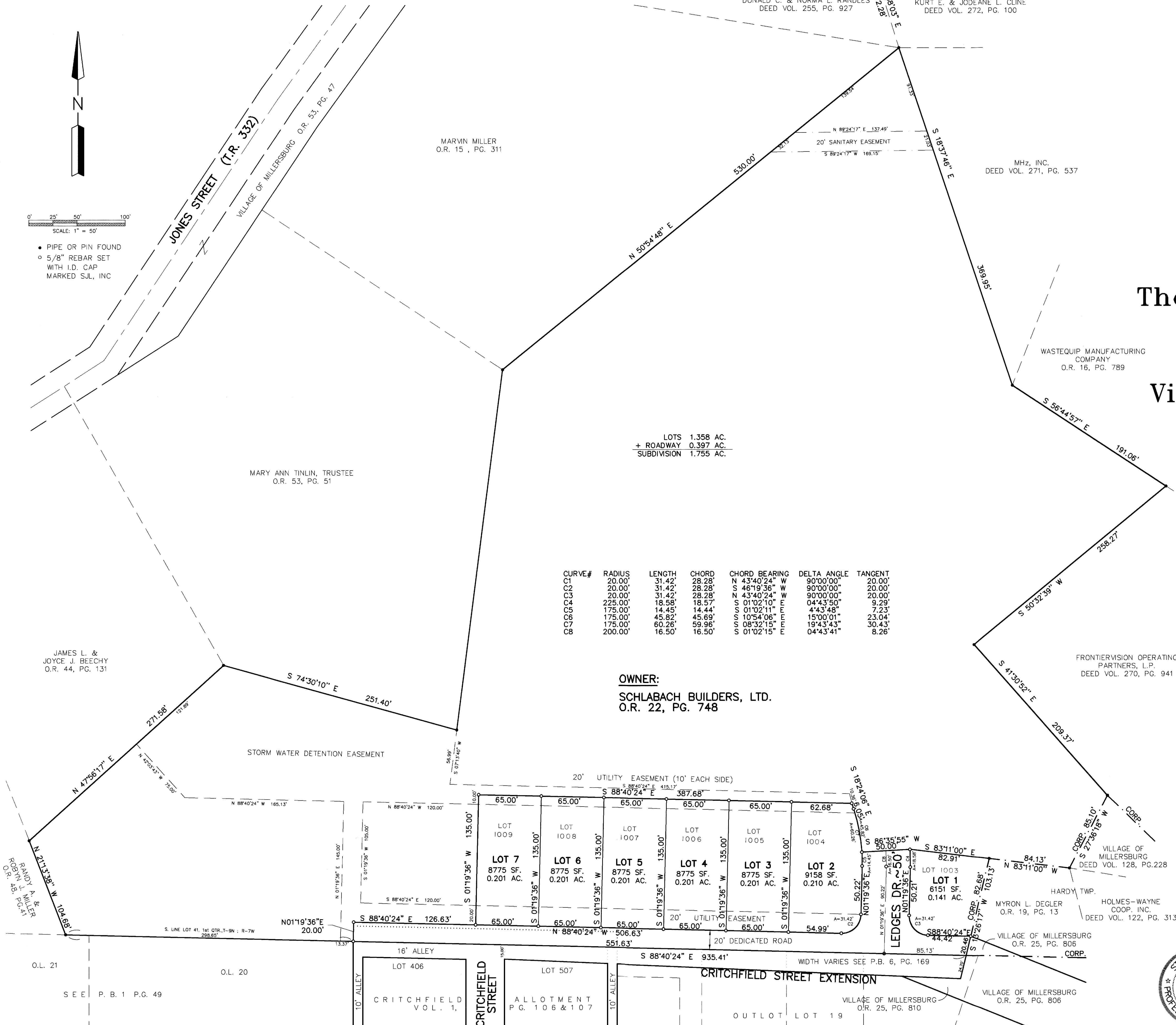
Distances shown hereon are expressed in feet and decimal parts thereof, bearings are to an assumed meridian and are used to express angles only, iron pins or monuments were found or set as indicated hereon. All of which I believe to be correct to the best of my knowledge.

By: Virgil D. Landis P.S. #6551  
 Date: 6-21-01



**SHAFPER, JOHNSTON, LICHTENWALTER & ASSOCIATES, INC.**  
 CONSULTING ENGINEERS - SURVEYORS  
 2585 CLEVELAND ROAD, WOOSTER, OHIO 44691  
 TEL (330) 345-6377 FAX (330) 345-6725 EMAIL: VJL@SJL@aol.com

DATE: 04/03/01  
 SCALE: 1" = 50'  
 SHEET 1 OF 1



MARY ANN TINLIN, TRUSTEE  
 O.R. 53, PG. 51

JAMES L. &  
 JOYCE J. BEECHY  
 O.R. 44, PG. 131

WASTEQUIP MANUFACTURING  
 COMPANY  
 O.R. 16, PG. 789

FRONTIERVISION OPERATING  
 PARTNERS, L.P.  
 DEED VOL. 270, PG. 941

VILLAGE OF MILLERSBURG  
 DEED VOL. 128, PG. 228

HOLMES-WAYNE  
 COOP. INC.  
 DEED VOL. 122, PG. 313

HARDY TWP.  
 MYRON L. DEGLER  
 O.R. 19, PG. 13

VILLAGE OF MILLERSBURG  
 O.R. 25, PG. 806

VILLAGE OF MILLERSBURG  
 O.R. 25, PG. 810

LOT 406  
 CRITCHFIELD STREET  
 VOL. 1,

LOT 507  
 ALLOTMENT  
 P.G. 106 & 107

CRITCHFIELD STREET EXTENSION  
 WIDTH VARIES SEE P.B. 6, PG. 169

VILLAGE OF MILLERSBURG  
 O.R. 25, PG. 810

OUTLOT LOT 19

O.L. 21

O.L. 20

SEE P.B. 1 P.G. 49

S. LINE LOT 41, 1st QTR., T-9N ; R-7W  
 298.62'

N 88°40'24" W 120.00'

S 74°30'10" E 251.40'

S 74°30'10" E 251.40'

JONES STREET (T.R. 332)

VILLAGE OF MILLERSBURG O.R. 53, PG. 47

N 88°26'16" W 779.22'

DONALD C. & NORMA L. RANDLES  
 DEED VOL. 255, PG. 927

KURT E. & JODEANE L. CLINE  
 DEED VOL. 272, PG. 100

MHz, INC.  
 DEED VOL. 271, PG. 537

MARY ANN TINLIN, TRUSTEE  
 O.R. 53, PG. 51

JAMES L. &  
 JOYCE J. BEECHY  
 O.R. 44, PG. 131

OWNER:  
 SCHLABACH BUILDERS, LTD.  
 O.R. 22, PG. 748

FRONTIERVISION OPERATING  
 PARTNERS, L.P.  
 DEED VOL. 270, PG. 941

VILLAGE OF MILLERSBURG  
 DEED VOL. 128, PG. 228

HOLMES-WAYNE  
 COOP. INC.  
 DEED VOL. 122, PG. 313

VILLAGE OF MILLERSBURG  
 O.R. 25, PG. 806

VILLAGE OF MILLERSBURG  
 O.R. 25, PG. 810

OUTLOT LOT 19

O.L. 21

O.L. 20

SEE P.B. 1 P.G. 49

S. LINE LOT 41, 1st QTR., T-9N ; R-7W  
 298.62'

N 88°40'24" W 120.00'

S 74°30'10" E 251.40'

S 74°30'10" E 251.40'

JONES STREET (T.R. 332)

VILLAGE OF MILLERSBURG O.R. 53, PG. 47

N 88°26'16" W 779.22'

DONALD C. & NORMA L. RANDLES  
 DEED VOL. 255, PG. 927

KURT E. & JODEANE L. CLINE  
 DEED VOL. 272, PG. 100

MHz, INC.  
 DEED VOL. 271, PG. 537

MARY ANN TINLIN, TRUSTEE  
 O.R. 53, PG. 51

JAMES L. &  
 JOYCE J. BEECHY  
 O.R. 44, PG. 131

OWNER:  
 SCHLABACH BUILDERS, LTD.  
 O.R. 22, PG. 748

FRONTIERVISION OPERATING  
 PARTNERS, L.P.  
 DEED VOL. 270, PG. 941

VILLAGE OF MILLERSBURG  
 DEED VOL. 128, PG. 228

HOLMES-WAYNE  
 COOP. INC.  
 DEED VOL. 122, PG. 313

VILLAGE OF MILLERSBURG  
 O.R. 25, PG. 806

VILLAGE OF MILLERSBURG  
 O.R. 25, PG. 810

OUTLOT LOT 19

O.L. 21

O.L. 20

SEE P.B. 1 P.G. 49

S. LINE LOT 41, 1st QTR., T-9N ; R-7W  
 298.62'

N 88°40'24" W 120.00'

S 74°30'10" E 251.40'

S 74°30'10" E 251.40'

JONES STREET (T.R. 332)

VILLAGE OF MILLERSBURG O.R. 53, PG. 47

N 88°26'16" W 779.22'

DONALD C. & NORMA L. RANDLES  
 DEED VOL. 255, PG. 927

KURT E. & JODEANE L. CLINE  
 DEED VOL. 272, PG. 100

MHz, INC.  
 DEED VOL. 271, PG. 537

MARY ANN TINLIN, TRUSTEE  
 O.R. 53, PG. 51

JAMES L. &  
 JOYCE J. BEECHY  
 O.R. 44, PG. 131

OWNER:  
 SCHLABACH BUILDERS, LTD.  
 O.R. 22, PG. 748

FRONTIERVISION OPERATING  
 PARTNERS, L.P.  
 DEED VOL. 270, PG. 941

VILLAGE OF MILLERSBURG  
 DEED VOL. 128, PG. 228

HOLMES-WAYNE  
 COOP. INC.  
 DEED VOL. 122, PG. 313

VILLAGE OF MILLERSBURG  
 O.R. 25, PG. 806

VILLAGE OF MILLERSBURG  
 O.R. 25, PG. 810

OUTLOT LOT 19

O.L. 21

O.L. 20

SEE P.B. 1 P.G. 49

S. LINE LOT 41, 1st QTR., T-9N ; R-7W  
 298.62'

N 88°40'24" W 120.00'

S 74°30'10" E 251.40'

S 74°30'10" E 251.40'

JONES STREET (T.R. 332)

VILLAGE OF MILLERSBURG O.R. 53, PG. 47

N 88°26'16" W 779.22'

DONALD C. & NORMA L. RANDLES  
 DEED VOL. 255, PG. 927

KURT E. & JODEANE L. CLINE  
 DEED VOL. 272, PG. 100

MHz, INC.  
 DEED VOL. 271, PG. 537

MARY ANN TINLIN, TRUSTEE  
 O.R. 53, PG. 51

JAMES L. &  
 JOYCE J. BEECHY  
 O.R. 44, PG. 131

OWNER:  
 SCHLABACH BUILDERS, LTD.  
 O.R. 22, PG. 748

FRONTIERVISION OPERATING  
 PARTNERS, L.P.  
 DEED VOL. 270, PG. 941

VILLAGE OF MILLERSBURG  
 DEED VOL. 128, PG. 228

HOLMES-WAYNE  
 COOP. INC.  
 DEED VOL. 122, PG. 313

VILLAGE OF MILLERSBURG  
 O.R. 25, PG. 806

VILLAGE OF MILLERSBURG  
 O.R. 25, PG. 810

OUTLOT LOT 19

O.L. 21

O.L. 20

SEE P.B. 1 P.G. 49

S. LINE LOT 41, 1st QTR., T-9N ; R-7W  
 298.62'

N 88°40'24" W 120.00'

S 74°30'10" E 251.40'

S 74°30'10" E 251.40'

JONES STREET (T.R. 332)

VILLAGE OF MILLERSBURG O.R. 53, PG. 47

N 88°26'16" W 779.22'

DONALD C. & NORMA L. RANDLES  
 DEED VOL. 255, PG. 927

KURT E. & JODEANE L. CLINE  
 DEED VOL. 272, PG. 100

MHz, INC.  
 DEED VOL. 271, PG. 537

MARY ANN TINLIN, TRUSTEE  
 O.R. 53, PG. 51

JAMES L. &  
 JOYCE J. BEECHY  
 O.R. 44, PG. 131

OWNER:  
 SCHLABACH BUILDERS, LTD.  
 O.R. 22, PG. 748

FRONTIERVISION OPERATING  
 PARTNERS, L.P.  
 DEED VOL. 270, PG. 941

VILLAGE OF MILLERSBURG  
 DEED VOL. 128, PG. 228

HOLMES-WAYNE  
 COOP. INC.  
 DEED VOL. 122, PG. 313

VILLAGE OF MILLERSBURG  
 O.R. 25, PG. 806

VILLAGE OF MILLERSBURG  
 O.R. 25, PG. 810

OUTLOT LOT 19

O.L. 21

O.L. 20

SEE P.B. 1 P.G. 49

S. LINE LOT 41, 1st QTR., T-9N ; R-7W  
 298.62'

N 88°40'24" W 120.00'

S 74°30'10" E 251.40'

S 74°30'10" E 251.40'

JONES STREET (T.R. 332)

VILLAGE OF MILLERSBURG O.R. 53, PG. 47

N 88°26'16" W 779.22'

DONALD C. & NORMA L. RANDLES  
 DEED VOL. 255, PG. 927

KURT E. & JODEANE L. CLINE  
 DEED VOL. 272, PG. 100

MHz, INC.  
 DEED VOL. 271, PG. 537

MARY ANN TINLIN, TRUSTEE  
 O.R. 53, PG. 51

JAMES L. &  
 JOYCE J. BEECHY  
 O.R. 44, PG. 131

OWNER:  
 SCHLABACH BUILDERS, LTD.  
 O.R. 22, PG. 748

FRONTIERVISION OPERATING  
 PARTNERS, L.P.  
 DEED VOL. 270, PG. 941

VILLAGE OF MILLERSBURG  
 DEED VOL. 128, PG. 228

HOLMES-WAYNE  
 COOP. INC.  
 DEED VOL. 122, PG. 313

VILLAGE OF MILLERSBURG  
 O.R. 25, PG. 806

VILLAGE OF MILLERSBURG  
 O.R. 25, PG. 810

OUTLOT LOT 19

O.L. 21

O.L. 20

SEE P.B. 1 P.G. 49

S. LINE LOT 41, 1st QTR., T-9N ; R-7W  
 298.62'

N 88°40'24" W 120.00'

S 74°30'10" E 251.40'