

MECHANIC TOWNSHIP  
HOLMES COUNTY, OHIO  
LOTS 10 & 11, 2ND QUARTER, T-8N, R-6W

Stone Found, South Edge Of  
Creek With 3 Round Marks  
On Top, S 3°49'05" W, 3.05'  
From Corner

Scale in Feet 1" = 200'

- Stone Found
- Iron Pin Found
- Iron Pin Set - 5/8" Rebar With Yellow Cap Marked "LONG SURVEYING INC." (Iron Pins In Road Have No Caps)

Bearings From Plat Vol. 13, Pg. 13

Terry & Marsha Van Sickle  
D. Vol. 233, Pg. 742

- References:
- Plat Vol. 13, Pg. 13
  - Plat Vol. 11, Pg. 126
  - Deeds Shown
  - Plat Vol. 16, Pg. 703

See Plat Vol. 13, Pg. 13 For  
Access Details

Richard C. Brunn  
D. Vol. 211, Pg. 66

Richard A. & Ronald H. Potts  
D. Vol. 233, Pg. 921

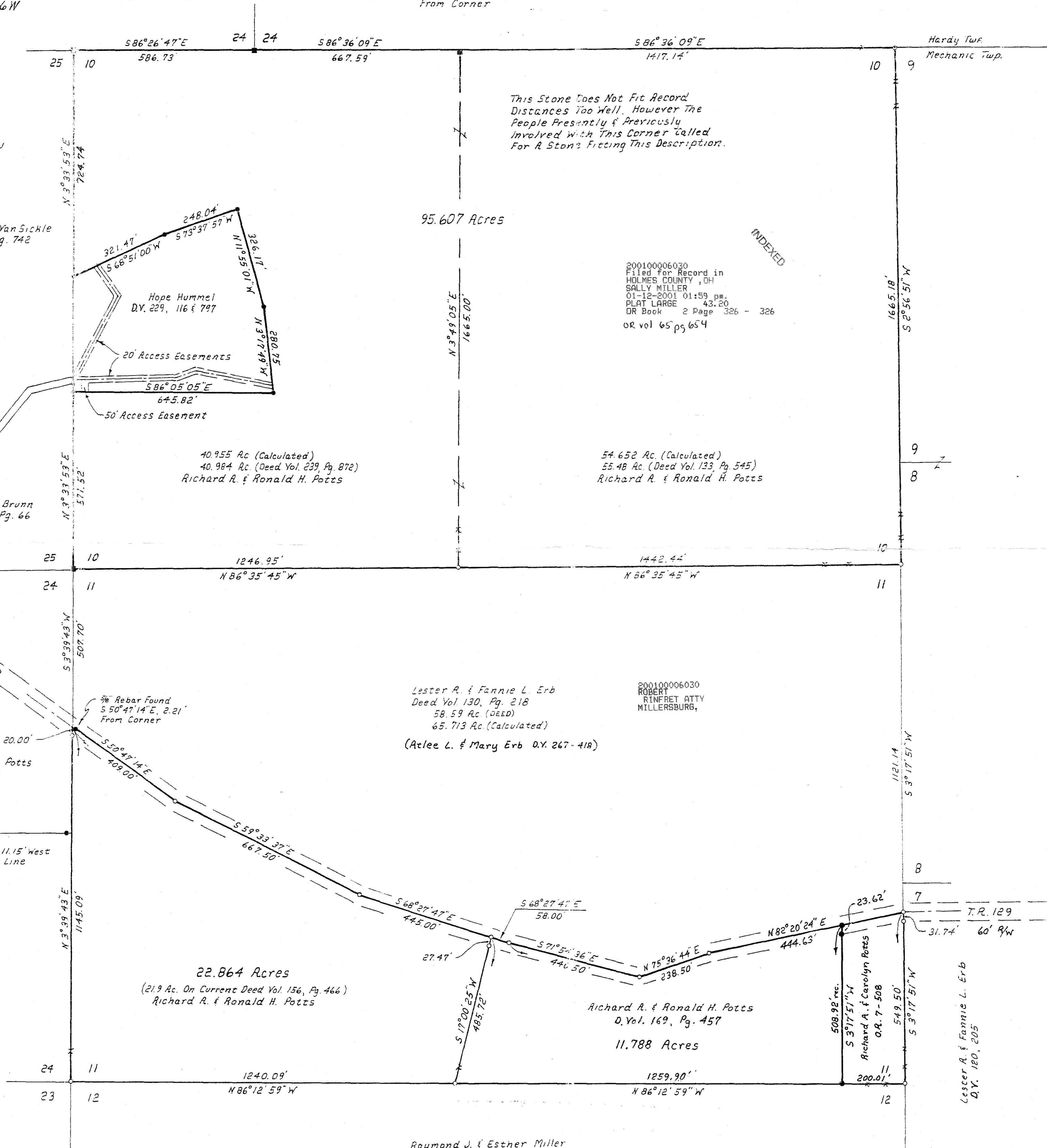
James W. Ball  
D. Vol. 210, Pg. 304



NOTE: This Plat Was Revised Nov. 9, 2000  
Iron Pins Shown Were Set During Field  
Work In The Winter Of 1988 - 1989.

I Certify This Survey To Be Correct  
To The Best Of My Knowledge.

Donald G. Long Jan. 4, 1989  
Donald G. Long, P.S. 7115  
LONG SURVEYING INC.  
12524 C.R. 6  
Killbuck, Ohio 44637



This Stone Does Not Fit Record  
Distances Too Well. However The  
People Presently & Previously  
Involved With This Corner Called  
For A Stone Fitting This Description.

200100006030  
Filed For Record in  
HOLMES COUNTY, OH  
SALLY MILLER  
01-12-2001 01:59 pm  
PLAT LARGE 43.20  
DR Book 2 Page 326 - 326  
OR vol 65 pg 654

54.652 Ac. (Calculated)  
55.48 Ac. (Deed Vol. 133, Pg. 545)  
Richard A. & Ronald H. Potts

Lester A. & Fannie L. Erb  
Deed Vol. 130, Pg. 218  
58.59 Ac. (DEED)  
65.713 Ac. (Calculated)  
(Atlee L. & Mary Erb D.Y. 267-418)

200100006030  
ROBERT  
RINFRET ATTY  
MILLERSBURG,

22.864 Acres  
(21.9 Ac. On Current Deed Vol. 156, Pg. 466)  
Richard A. & Ronald H. Potts

Richard A. & Ronald H. Potts  
D. Vol. 169, Pg. 457  
11.788 Acres

Raymond J. & Esther Miller  
D. Vol. 160, Pg. 1

Plat "B"  
PLAT APPROVED

14/2001-b