

REVISIONS	DESCRIPTION	DATE	BY
1	REVISED PER TAX MAP OFFICE	8/5/97	RDA

PROJECT No.	97030
SHEET No.	1 OF 1
DATE:	MAY, 1997
DRAWN BY:	RDA
97030.DWG	

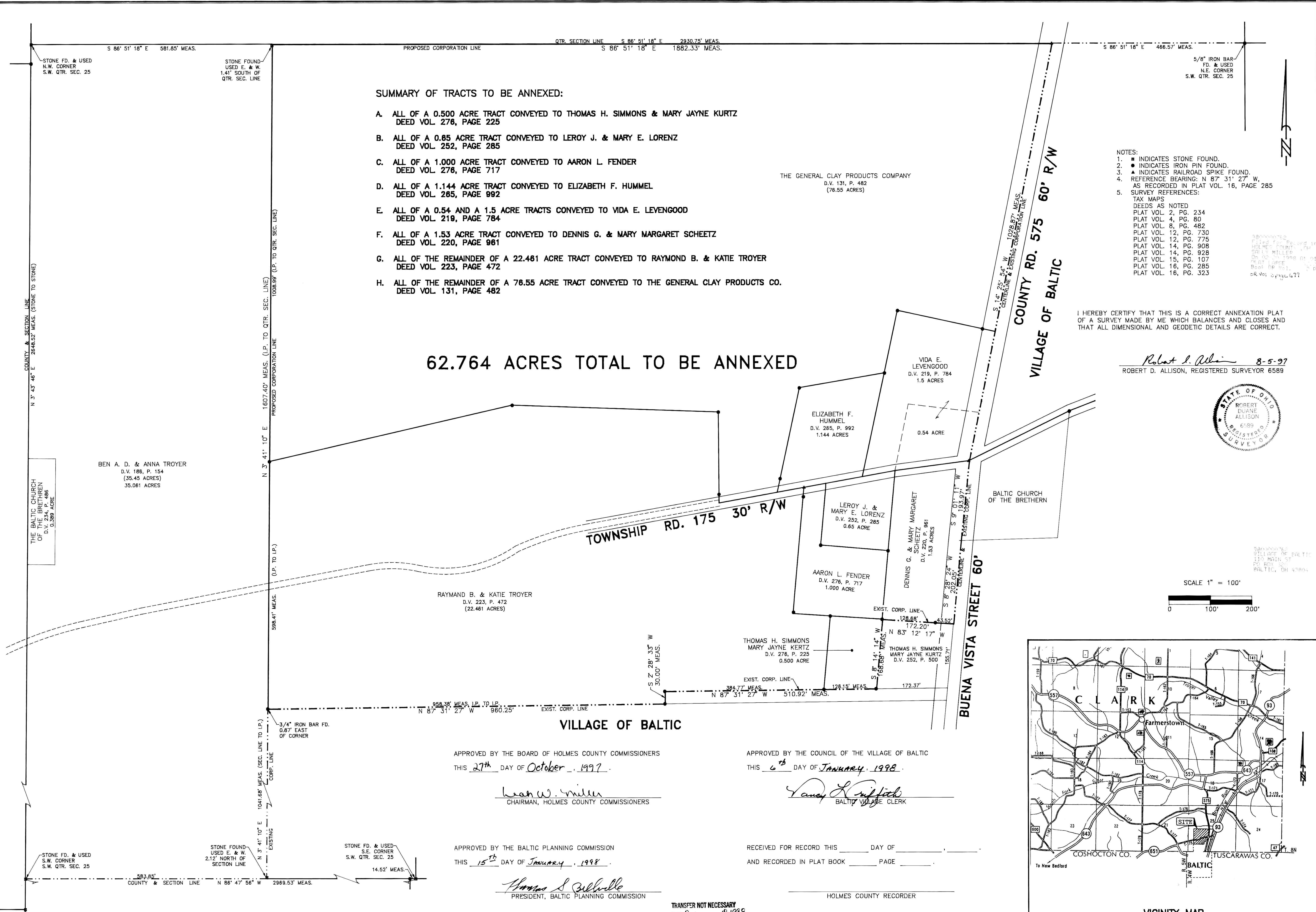
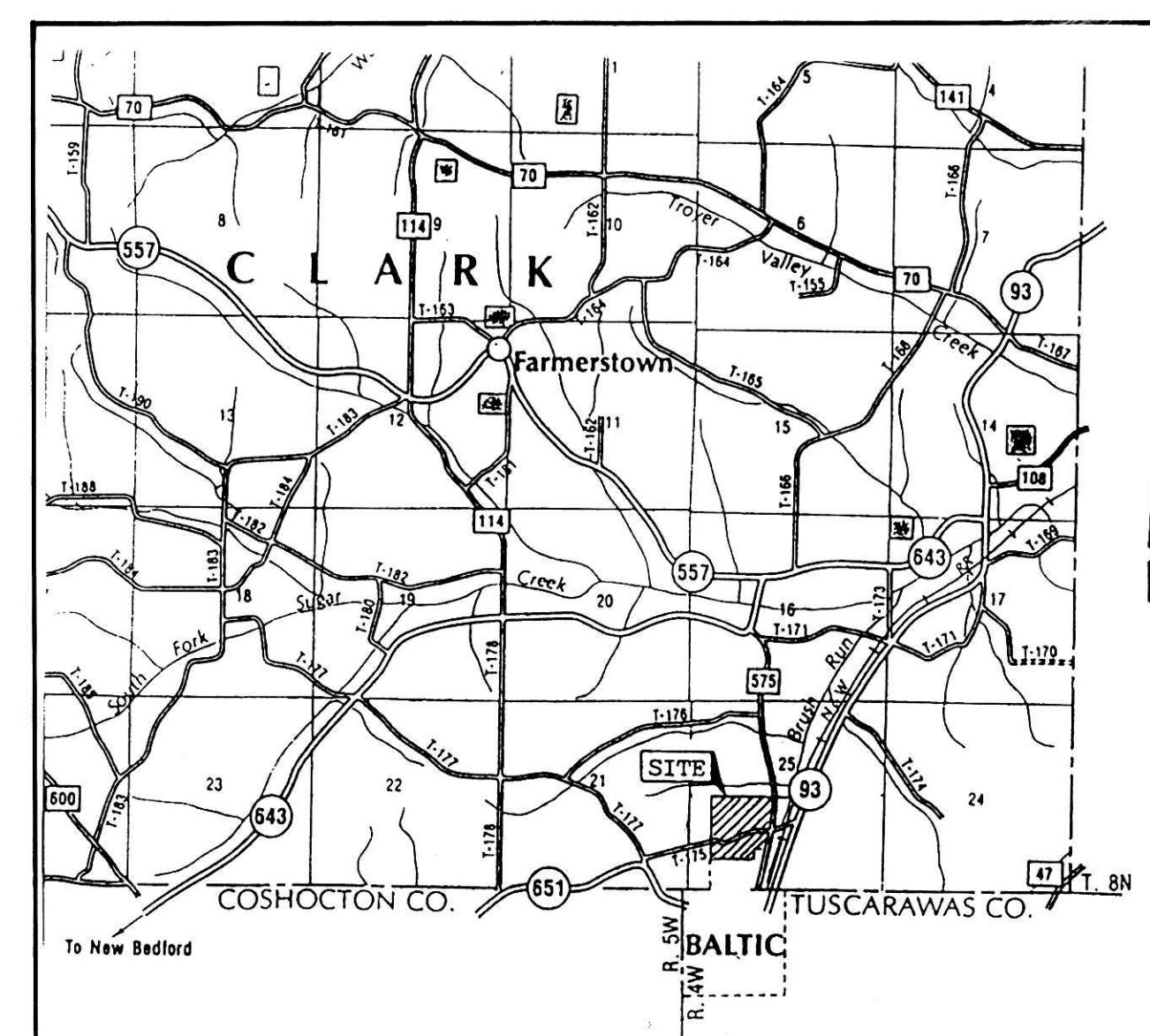
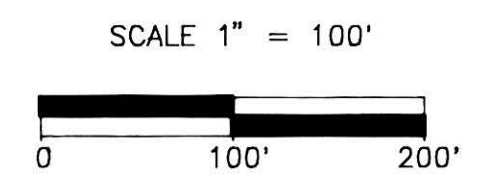
- SUMMARY OF TRACTS TO BE ANNEXED:**
- A. ALL OF A 0.500 ACRE TRACT CONVEYED TO THOMAS H. SIMMONS & MARY JAYNE KURTZ DEED VOL. 276, PAGE 225
  - B. ALL OF A 0.65 ACRE TRACT CONVEYED TO LEROY J. & MARY E. LORENZ DEED VOL. 252, PAGE 285
  - C. ALL OF A 1.000 ACRE TRACT CONVEYED TO AARON L. FENDER DEED VOL. 276, PAGE 717
  - D. ALL OF A 1.144 ACRE TRACT CONVEYED TO ELIZABETH F. HUMMEL DEED VOL. 265, PAGE 992
  - E. ALL OF A 0.54 AND A 1.5 ACRE TRACTS CONVEYED TO VIDA E. LEVENGOOD DEED VOL. 219, PAGE 784
  - F. ALL OF A 1.53 ACRE TRACT CONVEYED TO DENNIS G. & MARY MARGARET SCHEETZ DEED VOL. 220, PAGE 981
  - G. ALL OF THE REMAINDER OF A 22.481 ACRE TRACT CONVEYED TO RAYMOND B. & KATIE TROYER DEED VOL. 223, PAGE 472
  - H. ALL OF THE REMAINDER OF A 78.55 ACRE TRACT CONVEYED TO THE GENERAL CLAY PRODUCTS CO. DEED VOL. 131, PAGE 482

**62.764 ACRES TOTAL TO BE ANNEXED**

- NOTES:**
1. ■ INDICATES STONE FOUND.
  2. ● INDICATES IRON PIN FOUND.
  3. ▲ INDICATES RAILROAD SPIKE FOUND.
  4. REFERENCE BEARING: N 87° 31' 27" W, AS RECORDED IN PLAT VOL. 16, PAGE 285
  5. SURVEY REFERENCES:  
 TAX MAPS  
 DEEDS AS NOTED  
 PLAT VOL. 2, PG. 234  
 PLAT VOL. 4, PG. 80  
 PLAT VOL. 8, PG. 482  
 PLAT VOL. 12, PG. 730  
 PLAT VOL. 12, PG. 775  
 PLAT VOL. 14, PG. 908  
 PLAT VOL. 14, PG. 928  
 PLAT VOL. 15, PG. 107  
 PLAT VOL. 16, PG. 285  
 PLAT VOL. 16, PG. 323

I HEREBY CERTIFY THAT THIS IS A CORRECT ANNEXATION PLAT OF A SURVEY MADE BY ME WHICH BALANCES AND CLOSES AND THAT ALL DIMENSIONAL AND GEODETIC DETAILS ARE CORRECT.

*Robert D. Allison* 8-5-97  
 ROBERT D. ALLISON, REGISTERED SURVEYOR 6589



APPROVED BY THE BOARD OF HOLMES COUNTY COMMISSIONERS  
 THIS 27th DAY OF October, 1997.

*Walter W. Miller*  
 CHAIRMAN, HOLMES COUNTY COMMISSIONERS

APPROVED BY THE COUNCIL OF THE VILLAGE OF BALTIC  
 THIS 6th DAY OF January, 1998.

*Vandy L. Ruffalo*  
 BALTIC VILLAGE CLERK

APPROVED BY THE BALTIC PLANNING COMMISSION  
 THIS 15th DAY OF January, 1998.

*Thomas S. Bellville*  
 PRESIDENT, BALTIC PLANNING COMMISSION

RECEIVED FOR RECORD THIS \_\_\_\_\_ DAY OF \_\_\_\_\_  
 AND RECORDED IN PLAT BOOK \_\_\_\_\_ PAGE \_\_\_\_\_

HOLMES COUNTY RECORDER

TRANSFER NOT NECESSARY  
 DATE February 18, 1998  
 AUDITOR *Richard A. Franzen*