

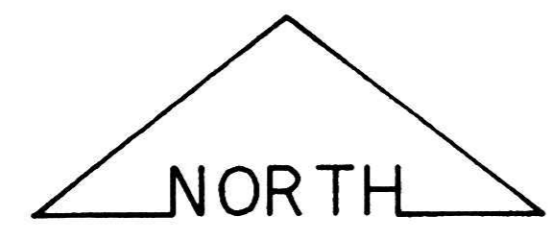
HEARTLAND Surveying, Inc.

Jim Shamp
5210 T.R. 257 MILLERSBURG, OH 44654
PH: 330-674-4698

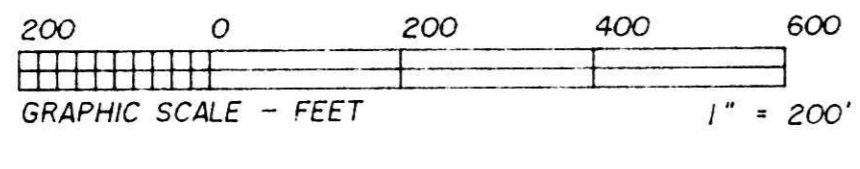
SURVEY		HOLMES CO. RAILS TO TRAILS COALITION		DATE	AUGUST 14, 1997
STATE	OHIO	COUNTY	HOLMES	TWP.	RICHLAND
RNG.	9 W				
TWP.	8 N	SECTIONS	14 8 17	RTT	970502.CRD 970805.PLI

9700010605
Filed for Record in
HOLMES COUNTY, OH
SALLY MILLER
On 12-19-1997 At 01:07 pm.
CNTY LG PLT
Vol. 2 Pg. 282 - 282
07082051

CURVE	RADIUS	TANGENT	LENGTH	DELTA	DEGREE	CHORD	CH.B.	CH. BY	CH. BY	CH. BY
A	869.96'	461.99'	849.39'	55°56'27"	6°35'10"	816.05'	S 04°06'26"E			
B	2359.98'	8.63'	17.26'	0°25'09"	2°25'40"	17.26'	S 23°39'13"W			
C	2458.98'	28.16'	56.31'	1°18'44"	2°19'48"	56.31'	N 23°12'26"E			
D	770.96'	454.07'	820.71'	60°59'34"	7°25'54"	782.50'	N 06°38'00"W			
E	2359.98'	242.05'	482.42'	1°42'44"	2°25'40"	481.58'	S 17°35'17"W			
F	2169.81'	276.76'	550.54'	14°32'15"	2°38'26"	549.06'	S 04°27'47"W			
G	1959.08'	20.21'	40.41'	1°10'55"	2°55'29"	40.41'	S 02°12'53"E			
H	1959.08'	348.03'	688.87'	20°08'49"	2°55'29"	685.33'	S 08°26'59"W			
I	1860.08'	333.87'	660.70'	20°21'05"	3°04'49"	657.23'	N 08°20'51"E			
J	1860.08'	15.87'	31.73'	0°58'39"	3°04'49"	31.73'	N 02°19'01"W			
K	2268.81'	289.38'	575.66'	14°32'15"	2°31'31"	574.12'	N 04°27'47"E			
L	2458.98'	232.86'	464.33'	10°49'09"	2°19'48"	463.64'	N 17°08'30"E			
M	3619.20'	197.30'	394.21'	6°14'27"	1°34'59"	394.01'	S 15°34'38"W			
N	1985.96'	342.58'	678.48'	19°34'28"	2°53'06"	675.19'	S 22°14'38"W			
O	1414.91'	50.00'	99.95'	4°02'51"	4°02'58"	99.93'	S 30°00'27"W			
P	1374.73'	27.35'	54.69'	2°16'45"	4°10'04"	54.68'	S 24°28'53"W			
Q	1539.03'	33.54'	67.07'	2°29'48"	3°43'22"	67.06'	N 26°36'43"E			
R	1513.91'	27.03'	54.05'	2°02'45"	3°47'05"	54.05'	N 31°00'30"E			
S	1886.96'	325.50'	644.66'	19°34'28"	3°02'11"	641.53'	N 22°14'38"E			
T	3718.20'	202.70'	404.99'	6°14'27"	1°32'27"	404.79'	N 15°34'38"E			



BEARINGS ARE TO AN ASSUMED MERIDIAN AND ARE USED TO DENOTE ANGULAR MEAS. ONLY.



- LEGEND:
- = STONE FD.
 - = IRON PIN/PIPE FD.
 - = POINT-OF-DEPARTURE
 - = 5/8" X 30" RE-BAR W/PLASTIC I.D. CAP SET
 - = R/R SPIKE SET
 - ▲ = R/R SPIKE FD.

REFERENCE DOCUMENTS:
TAX MAPS
DEEDS AS SHOWN
SURVEY PLATS:
9/205
14/966
S.R. 3/63
RAILROAD PLANS

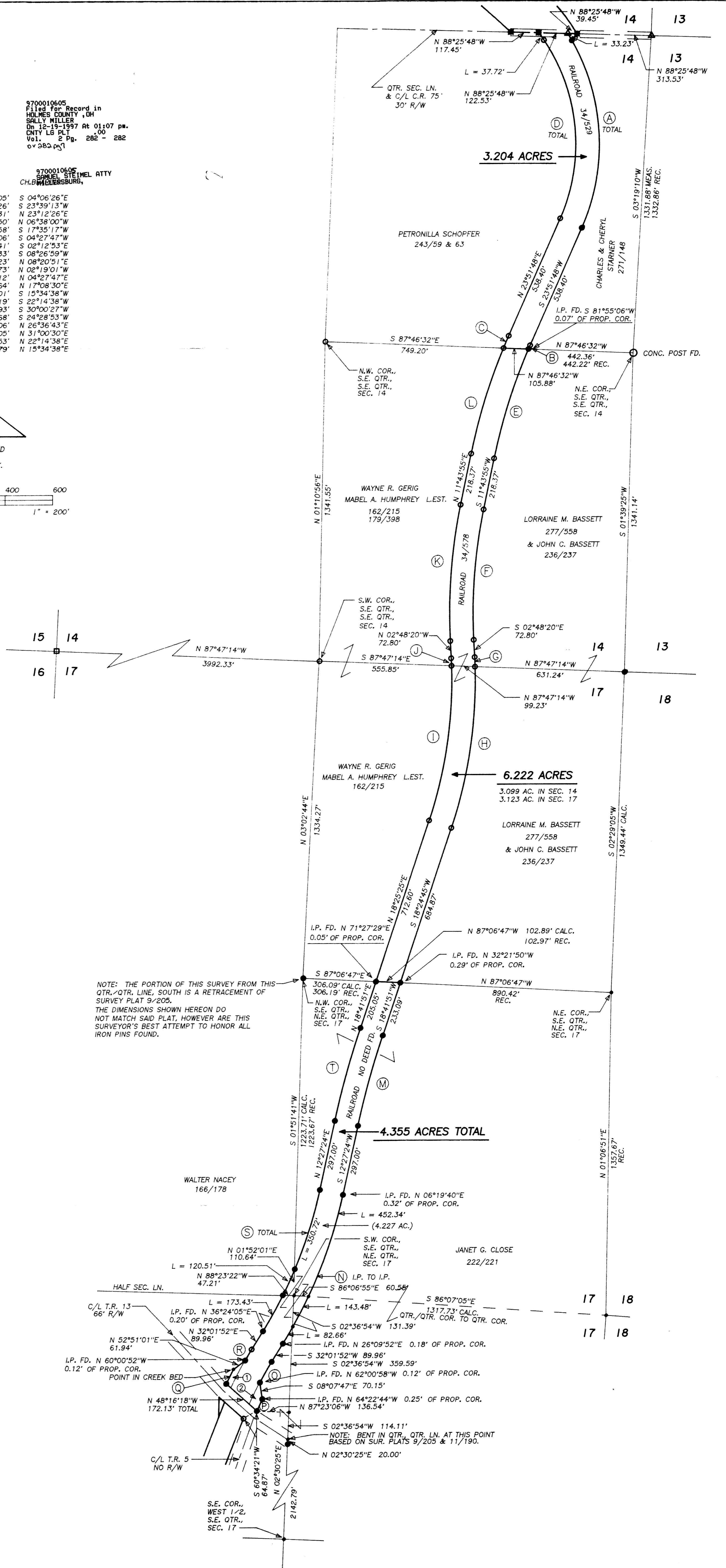
NOTE: THE PORTION OF THIS SURVEY FROM THIS QTR. QTR. LINE, SOUTH IS A RETRACEMENT OF SURVEY PLAT 9/205. THE DIMENSIONS SHOWN HEREON DO NOT MATCH SAID PLAT, HOWEVER ARE THIS SURVEYOR'S BEST ATTEMPT TO HONOR ALL IRON PINS FOUND.

- ① RAILROAD 84/150 (0.056 AC.)
- ② RAILROAD 84/150 (0.072 AC.)

I CERTIFY THIS TO BE A TRUE PLAT OF A FIELD SURVEY COMPLETED ON AUGUST 14, 1997:



JIM SHAMP, REG. SUR. NO. S-6088



PLAT APPROVED
12/4/97
Plat "K"