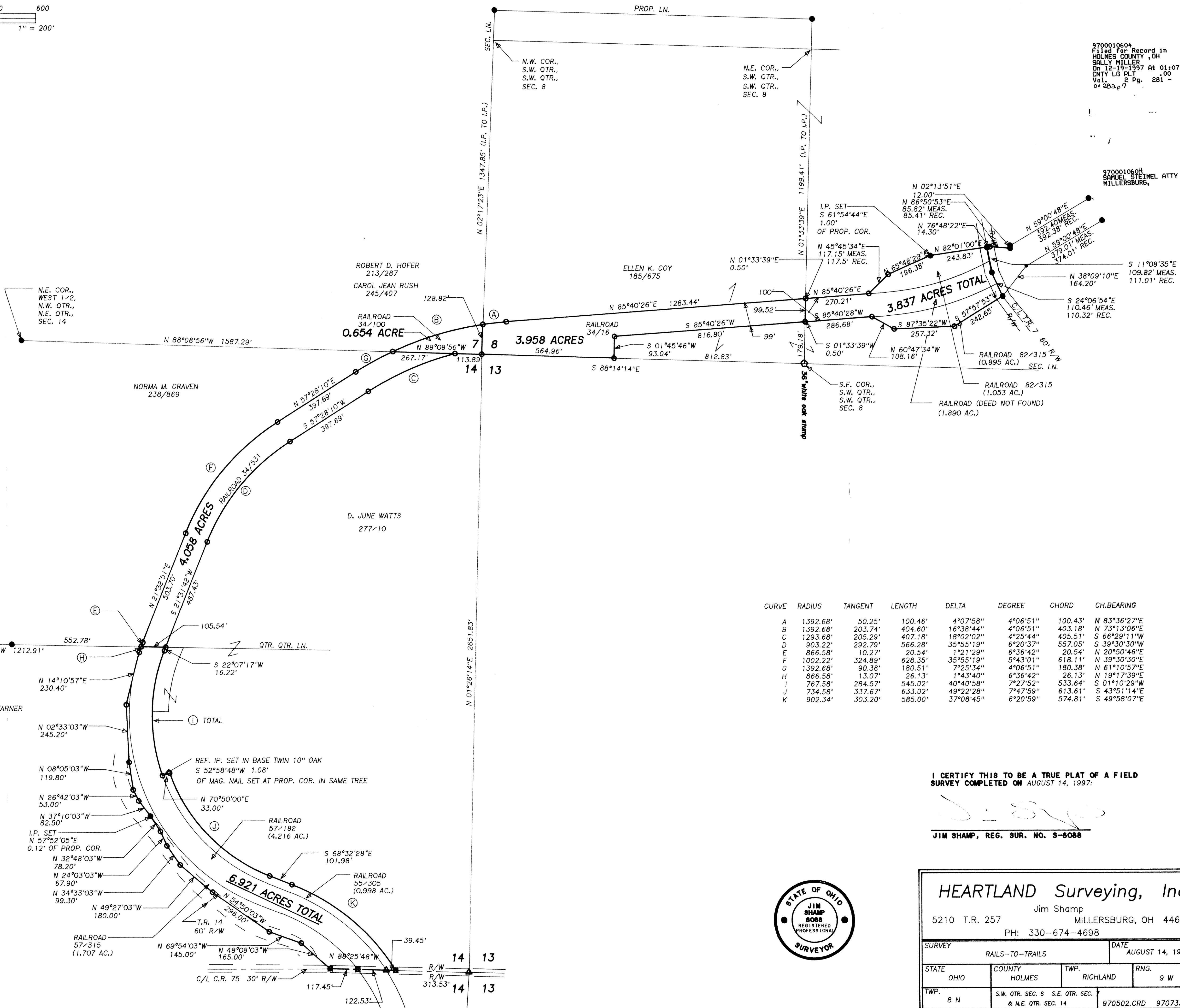


BEARINGS ARE TO AN ASSUMED MERIDIAN AND ARE USED TO DENOTE ANGLES ONLY.

- LEGEND:
- = STONE FD.
 - = IRON PIN/PIPE FD.
 - = POINT-OF-DEPARTURE
 - = 5/8" X 30" RE-BAR W/PLASTIC I.D. CAP SET
 - = R/R SPIKE SET
 - △ = R/R SPIKE FD.

- REFERENCE DOCUMENTS:
- TAX MAPS
 - DEEDS AS SHOWN
 - SURVEY PLATS:
 - 6/64
 - 15/96
 - 12/660
 - 14/499
 - 14/966
 - 3/63



CURVE	RADIUS	TANGENT	LENGTH	DELTA	DEGREE	CHORD	CH.BEARING
A	1392.68'	50.25'	100.46'	4°07'58"	4°06'51"	100.43'	N 83°36'27"E
B	1392.68'	203.74'	404.60'	16°38'44"	4°06'51"	403.18'	N 73°13'06"E
C	1293.68'	205.29'	407.18'	18°02'02"	4°25'44"	405.51'	S 66°29'11"W
D	903.22'	292.79'	566.28'	35°55'19"	6°20'37"	557.05'	S 39°30'30"W
E	866.58'	10.27'	20.54'	1°21'29"	6°36'42"	20.54'	N 20°50'46"E
F	1002.22'	324.89'	628.35'	35°55'19"	5°43'01"	618.11'	N 39°30'30"E
G	1392.68'	90.38'	180.51'	7°25'34"	4°06'51"	180.38'	N 61°10'57"E
H	866.58'	13.07'	26.13'	1°43'40"	6°36'42"	26.13'	N 19°17'39"E
I	767.58'	284.57'	545.02'	40°40'58"	7°27'52"	533.64'	S 01°10'29"W
J	734.58'	337.67'	633.02'	49°22'28"	7°47'59"	613.61'	S 43°51'14"E
K	902.34'	303.20'	585.00'	37°08'45"	6°20'59"	574.81'	S 49°58'07"E

I CERTIFY THIS TO BE A TRUE PLAT OF A FIELD SURVEY COMPLETED ON AUGUST 14, 1997:

J. Shamp
JIM SHAMP, REG. SUR. NO. S-6088



HEARTLAND Surveying, Inc.
 Jim Shamp
 5210 T.R. 257 MILLERSBURG, OH 44654
 PH: 330-674-4698

SURVEY		DATE	
RAILS-TO-TRAILS		AUGUST 14, 1997	
STATE	COUNTY	TWP.	RNG.
OHIO	HOLMES	RICHLAND	9 W
TWP.	S.W. QTR. SEC. 8 & N.E. QTR. SEC. 14		970502.CRD 970733.PL
8 N			

PLAT APPROVED
12/14/97 Plat "J"