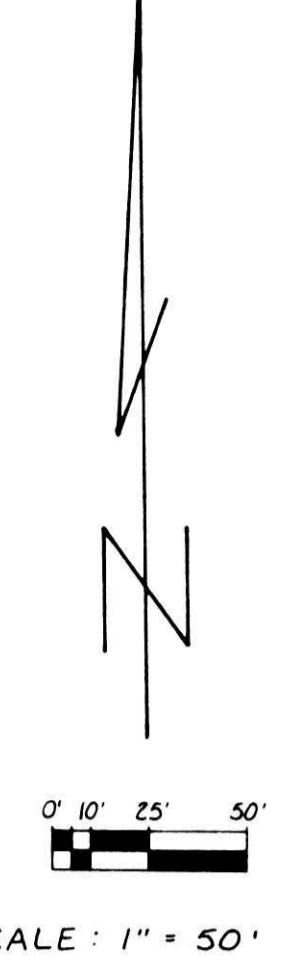
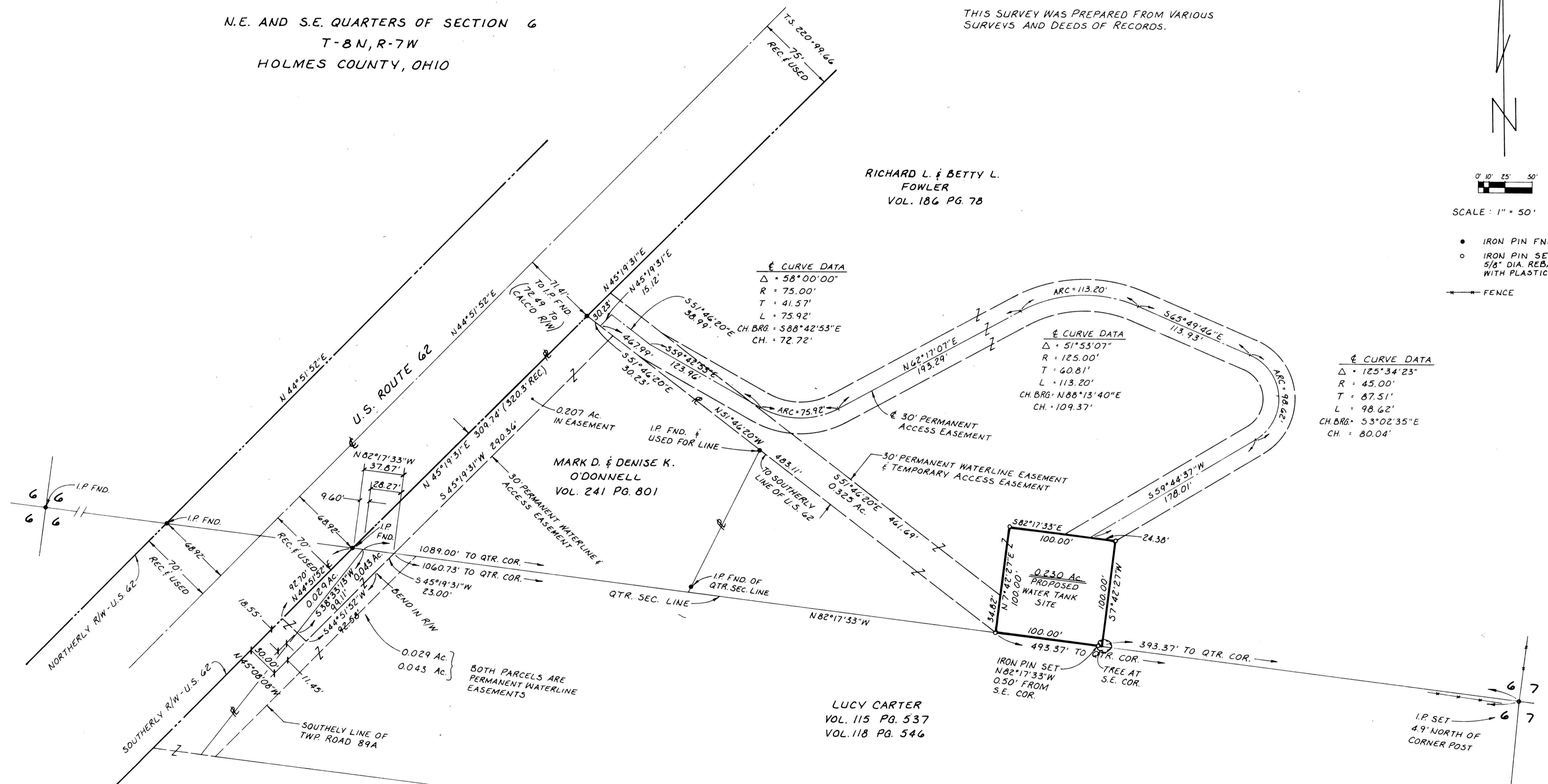


— SURVEY AND EASEMENT PLAT —
 KILLBUCK TOWNSHIP
 N.E. AND S.E. QUARTERS OF SECTION 6
 T-8N, R-7W
 HOLMES COUNTY, OHIO

BEARINGS ARE ASSUMED AND RELATED.
 THIS SURVEY WAS PREPARED FROM VARIOUS SURVEYS AND DEEDS OF RECORDS.



- IRON PIN FND.
- IRON PIN SET:
5/8" DIA. REBAR
WITH PLASTIC I.D. CAP
- FENCE



☉ CURVE DATA
 $\Delta = 58^{\circ}00'00''$
 $R = 75.00'$
 $T = 41.57'$
 $L = 75.92'$
 CH. BRG. = $S88^{\circ}42'53''E$
 CH. = 72.72'

☉ CURVE DATA
 $\Delta = 51^{\circ}53'07''$
 $R = 125.00'$
 $T = 60.81'$
 $L = 113.20'$
 CH. BRG. = $N88^{\circ}13'40''E$
 CH. = 109.37'

☉ CURVE DATA
 $\Delta = 125^{\circ}34'23''$
 $R = 45.00'$
 $T = 87.51'$
 $L = 98.62'$
 CH. BRG. = $S3^{\circ}02'35''E$
 CH. = 80.04'

LILLIAN M. CANTLEBERRY
 &
 VIRGINIA M. LAWSON
 VOL. 169 PG. 315
 VOL. 169 PG. 395

LUCY CARTER
 VOL. 115 PG. 537
 VOL. 118 PG. 546

PREPARED BY: ENGINEERING ASSOCIATES, INC.
 WOOSTER, OHIO 44691

132884
 501 of 1993 AT 2:55 PM
 241 of 1993
 Plat Vol. 2 Pg. 233
 Recd. vol. 800 pg. 639



I CERTIFY THIS SURVEY TO BE CORRECT
 TO THE BEST OF MY KNOWLEDGE.

William H. Long
 WILLIAM H. LONG PS. 6505

2-25-93
 DATE