

169073

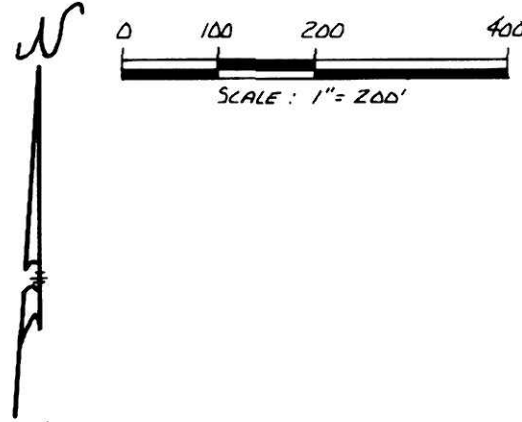
PROPOSED ANNEXATION
TO THE
VILLAGE OF MILLERSBURG
HARDY TOWNSHIP, T-9N; R-7W
SE QTR. SEC 19 & S.W. QTR. SEC. 20
HOLMES COUNTY, OHIO

APPROVED HOLMES COUNTY COMMISSIONERS *pd 39.35*
I HEREBY CERTIFY THAT THE HOLMES COUNTY COMMISSIONERS HAVE APPROVED
THE DETACHMENT OF THIS TRACT OF LAND AS SHOWN HEREON, FROM HOLMES COUNTY.
April 23, 1990
DATE *[Signature]*
CHAIRMAN, COUNTY COMMISSIONERS

APPROVED MILLERSBURG PLANNING COMMISSION
I HEREBY CERTIFY THAT THIS PLAT FOR ANNEXATION WAS APPROVED BY THE
MILLERSBURG PLANNING COMMISSION AT A MEETING HELD ON
THE 17 DAY OF July 1990.
BY *[Signature]*
PRESIDENT, MILLERSBURG PLANNING COMMISSION

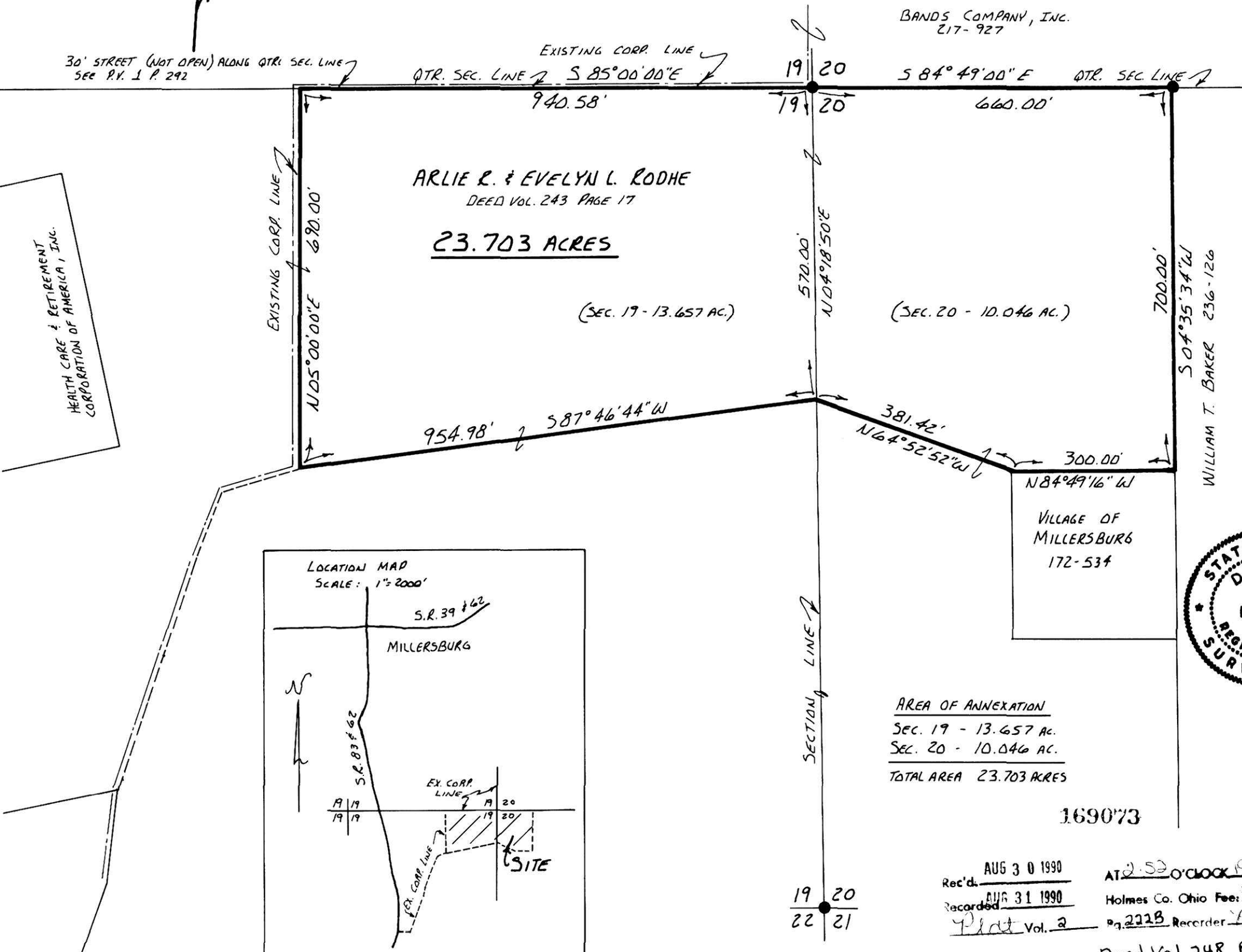
APPROVED MILLERSBURG VILLAGE COUNCIL
I HEREBY CERTIFY THAT THIS PLAT FOR ANNEXATION WAS APPROVED BY
THE VILLAGE COUNCIL OF MILLERSBURG, OHIO AT A MEETING HELD ON
THE 13th DAY OF August 1990.
BY *[Signature]*
VILLAGE CLERK

RECORDER
I HEREBY CERTIFY THAT THIS PLAT WAS RECEIVED FOR RECORD
ON AUG 30 1990 19 AT 2:52 PM
AND WAS RECORDED IN PLAT BOOK 2 ON PAGE 222 B
ON AUG 31 1990 19 .
FEE 39.35
BY *[Signature]*
RECORDER, HOLMES Co., OHIO



30' STREET (NOT OPEN) ALONG QTR. SEC. LINE
SEE P.V. 1 P. 292

HEALTH CARE & RETIREMENT
CORPORATION OF AMERICA, INC.



BANDS COMPANY, INC.
217-927



AREA OF ANNEXATION
Sec. 19 - 13.657 ac.
Sec. 20 - 10.046 ac.
TOTAL AREA 23.703 ACRES

SURVEYORS CERTIFICATION
I HEREBY CERTIFY THAT THIS PLAT WAS PREPARED ON BEHALF OF THE
PROPERTY OWNERS FROM EXISTING SURVEYS AND DEEDS OF RECORD
THIS 6th DAY OF JULY 1989.

BY *[Signature]*
DONALD C. BAKER P.S. 6938
4321 T.R. 252
GLENMONT, OH.

Rec'd. AUG 30 1990 AT 2:52 O'CLOCK PM
Recorded AUG 31 1990 Holmes Co. Ohio Fee: 39.35
Plat Vol. 2 Pg. 222B Recorder *[Signature]*
Deed Vol 248 Page 498

PLAT APPROVED
2-9-90 83