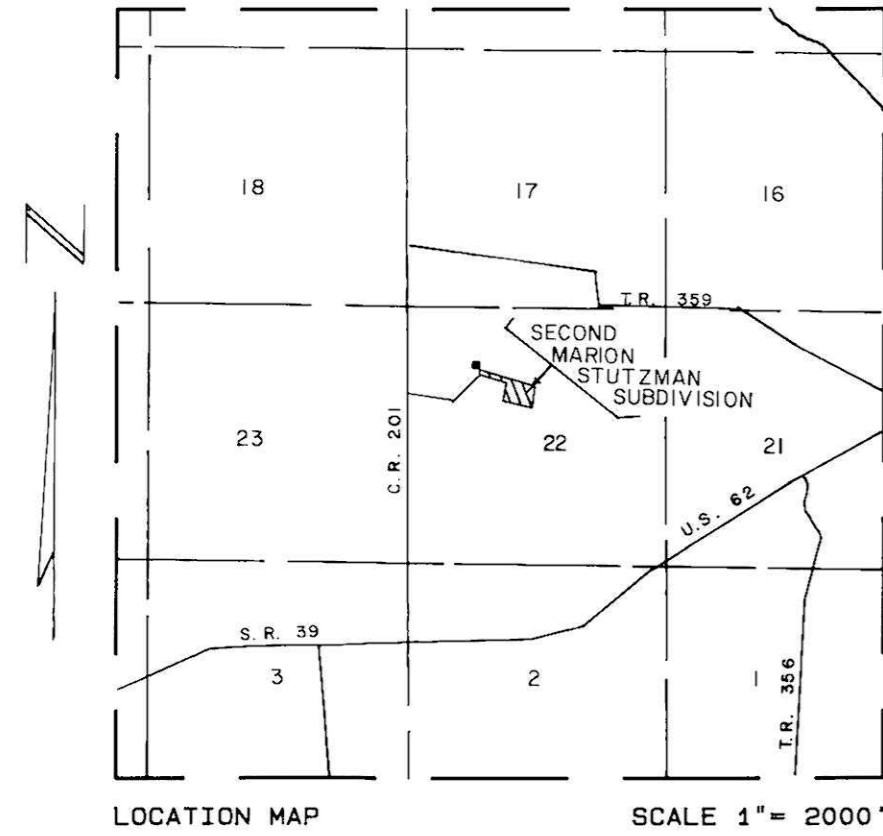


REPLAT OF LOT 2

OF  
FIRST MARION STUTZMAN SUBDIVISION  
IN  
LOT 22, FIRST QUARTER  
RANGE 6W, TOWNSHIP 9N  
BERLIN TOWNSHIP, HOLMES COUNTY  
OHIO

JUNE 22, 1990



LOCATION MAP SCALE 1" = 2000'

LEGEND

- ⊙ = RECOVERED 4 1/2" CONCRETE MONUMENT
- = RECOVERED 1" x 30" REBAR
- = RECOVERED 3/4" REBAR W/ALUM. CAP
- \* = SET 3/4" x 30" REBAR W/PLASTIC CAPS

CERTIFICATE OF OWNERSHIP AND DEDICATION

WE HEREBY CERTIFY THAT WE ARE THE OWNERS OF THE PROPERTY SHOWN AND DESCRIBED HEREON AND THAT WE HEREBY ADOPT THIS PLAN OF SUBDIVISION WITH OUR FREE CONSENT, ESTABLISH THE MINIMUM BUILDING RESTRICTION LINES, AND DEDICATE ALL STREETS, ALLEYS, WALKS, PARKS AND OTHER OPEN SPACES TO PUBLIC OR PRIVATE USE AS NOTED.

7-5-1990

*Marion M. Stutzman*  
MARION M. STUTZMAN P.O. BOX 27, WALNUT CREEK, OHIO 44887

*Betty J. Stutzman*  
BETTY J. STUTZMAN

CERTIFICATE OF ACCURACY

I HEREBY CERTIFY THAT THE PLAN SHOWN AND DESCRIBED HEREON IS A TRUE AND CORRECT SURVEY TO THE ACCURACY REQUIRED BY THE HOLMES COUNTY REGIONAL PLANNING COMMISSION AND THAT THE MONUMENTS HAVE BEEN PLACED AS SHOWN HEREON

JUNE 30 1990

*R. Scott Johnson*  
REGISTERED SURVEYOR NO. 878

CERTIFICATION OF THE APPROVAL OF WATER AND SEWAGE SYSTEMS

I HEREBY CERTIFY THAT THE WATER SUPPLY AND SEWAGE DISPOSAL UTILITY SYSTEMS INSTALLED, OR PROPOSED FOR INSTALLATION, IN THE SUBDIVISION PLAT ENTITLED: SECOND MARION STUTZMAN SUBDIVISION FULLY MEETS THE REQUIREMENTS OF THE HOLMES COUNTY BOARD OF HEALTH AND THE OHIO STATE HEALTH DEPARTMENT, AND ARE HEREBY APPROVED AS SHOWN.

July 27 1990

*James P. ...*  
COUNTY HEALTH COMMISSIONER

CERTIFICATION OF THE APPROVAL OF PLAT AND ENGINEERING DETAILS

I HEREBY CERTIFY THAT I HAVE APPROVED THE PLAT AND ENGINEERING DETAILS OF THE PROPOSED ROADS, SEWER AND WATER SYSTEMS AND OTHER PROPOSED PUBLIC FACILITIES IN THE SUBDIVISION PLAT AS SHOWN HEREON

July 23 1990

*Robert L. Kearney P.E., P.S.*  
COUNTY ENGINEER

CERTIFICATION OF THE APPROVAL OF STREETS AND UTILITIES

I HEREBY CERTIFY THAT STREETS, UTILITIES AND OTHER REQUIRED IMPROVEMENTS HAVE BEEN INSTALLED IN AN ACCEPTABLE MANNER ACCORDING TO COUNTY SPECIFICATIONS IN THE SUBDIVISION ENTITLED SECOND MARION STUTZMAN SUBDIVISION.

July 23 1990

*Robert L. Kearney P.E., P.S.*  
COUNTY ENGINEER

CERTIFICATION OF APPROVAL BY HOLMES SOIL AND WATER CONSERVATION DISTRICT

I HEREBY CERTIFY THAT I HAVE APPROVED THE SUBDIVISION PLAT AND AGREEMENTS OR PROVISIONS FOR SEDIMENTATION AND EROSION CONTROL AS STATED BY THIS OFFICE IN Vol. Pg.

7/19 1990

*James L. ...*  
HOLMES SOIL AND WATER CONSERVATION DISTRICT

CERTIFICATION OF THE APPROVAL BY THE COUNTY COMMISSIONERS

I HEREBY CERTIFY THAT THE HOLMES COUNTY COMMISSIONERS HAVE APPROVED THE SUBDIVISION PLAT AS SHOWN HEREON

7/30 1990

*James ...*  
CHAIRMAN, COUNTY COMMISSIONERS

CERTIFICATE OF APPROVAL FOR RECORDING

I HEREBY CERTIFY THAT THE SUBDIVISION PLAT SHOWN HEREON HAS BEEN FOUND TO COMPLY WITH THE SUBDIVISION REGULATIONS FOR HOLMES COUNTY, OHIO, WITH THE EXCEPTION OF SUCH VARIANCES, IF ANY, AS ARE NOTED IN THE MINUTES OF THE HOLMES COUNTY REGIONAL PLANNING COMMISSION AND THAT IT HAS BEEN APPROVED FOR RECORDING IN THE OFFICE OF THE COUNTY RECORDER

July 30 1990

*Paul V. ...*  
HOLMES COUNTY PLANNING COMMISSION

RESTRICTIONS

1. NO HOUSE TRAILERS OR MOBILE HOMES EXCEPT DOUBLE-WIDE MODULARS ON FOUNDATION OR BASEMENT
2. NO SWINE OR POULTRY OPERATIONS
3. NO CAMPGROUNDS FOR PUBLIC USE
4. NO APARTMENTS
5. NO COMMERCIAL SITES. FOR RESIDENTIAL USE ONLY
6. UNSIGHTLY AND UNHEALTHY ACCUMULATION OF REFUSE ON ANY LOT IS PROHIBITED

SEWAGE EASEMENT

BY ORDER OF THE HOLMES COUNTY BOARD OF HEALTH AN EASEMENT OF NO SPECIFIED WIDTH IS ESTABLISHED ACROSS THE REAR LAWN AND AN EXISTING RAVINE OF LOT 6, FOR THE FLOW ONLY OF EFFLUENT FROM THE LEACHING BEDS OF LOT 5 SAID EFFLUENT SHALL BE CHECKED FOR PURITY BY THE OHIO ENVIRONMENTAL PROTECTION AGENCY AND THE HOLMES COUNTY BOARD OF HEALTH.

NOTE: EASEMENT FROM LOT 6 ADJOINS EXISTING EASEMENT ON LOT 3, FIRST MARION STUTZMAN SUBDIVISION.

LOTS 5 & 6 WILL TAP INTO CENTRAL SEWER WHEN AVAILABLE.

RECEIVED FOR RECORD THIS DAY OF 1990

AT .M.

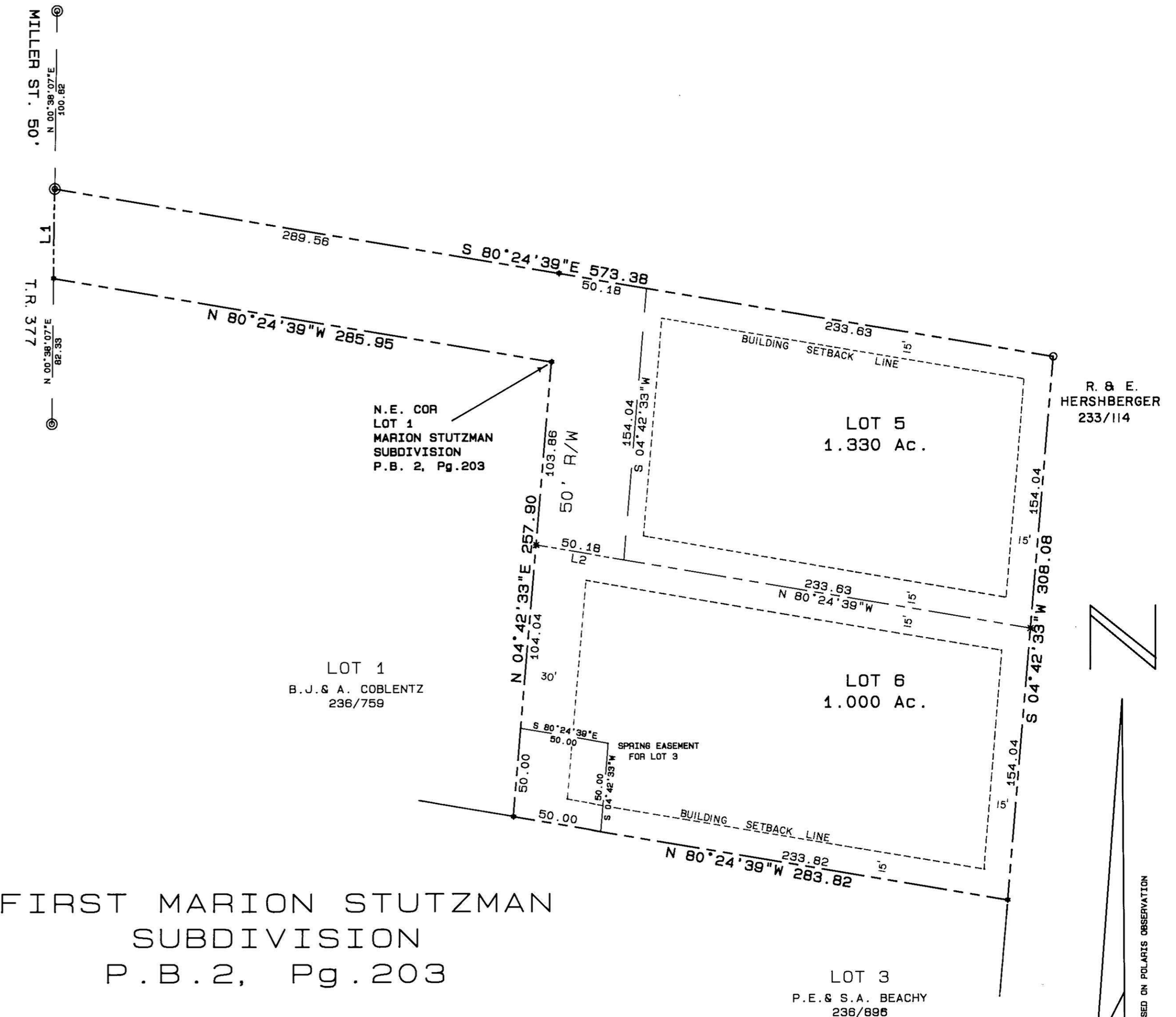
RECORDED . 1990 IN PLAT BOOK . PAGE No.

FEES PAID

COUNTY RECORDER

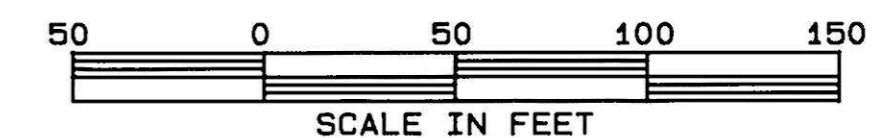


ANY CULVERTS UNDER DRIVEWAYS SHALL BE A MINIMUM OF 12" AND SHALL BE APPROVED BY THE PROPER AUTHORITY



FIRST MARION STUTZMAN  
SUBDIVISION  
P.B.2, Pg.203

LINE	BEARING	DISTANCE
1	N 00°38'07"E	50.62
2	N 80°24'39"W	50.18



168668  
Rec'd 7-30-1990 AT 11:20:00 AM  
Recorded 7-31-1990 Holmes Co. Ohio Pg. 203  
Plat Vol. 2 Pg. 221 Recorder: Richard Gravenor

TRANSFER NOT NECESSARY  
DATE July 30, 1990  
AUDITOR *James ...*

Prepared By  
AMERICAN PRECISION SURVEYING  
450 S. 4th Street (614) 622-2783  
COSHOCTON, OHIO 43812