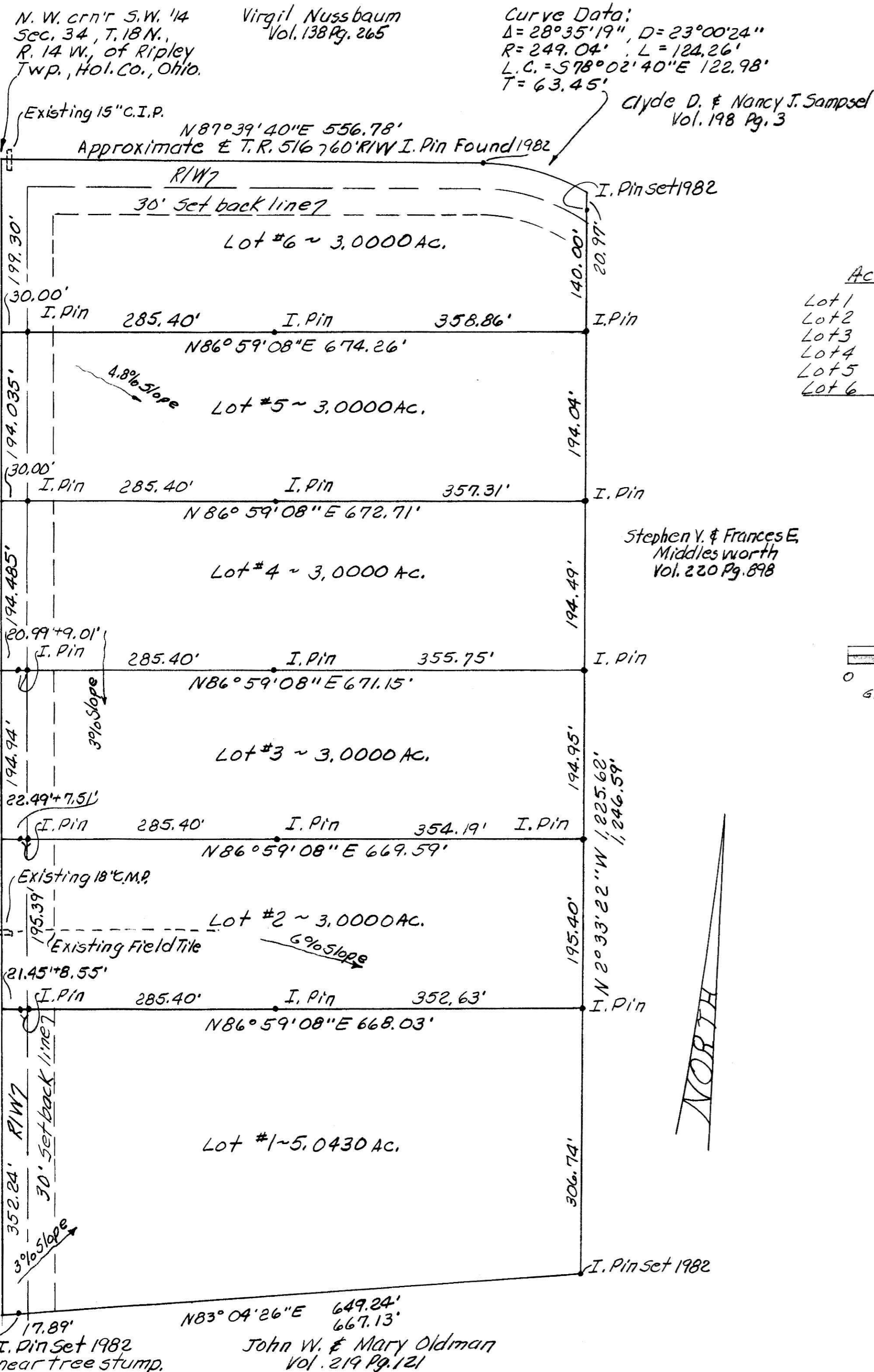


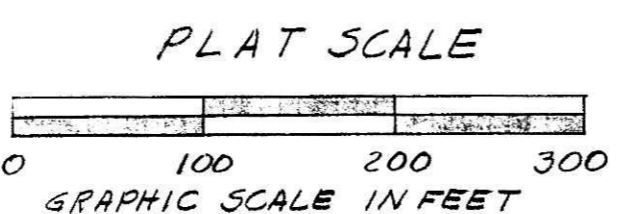
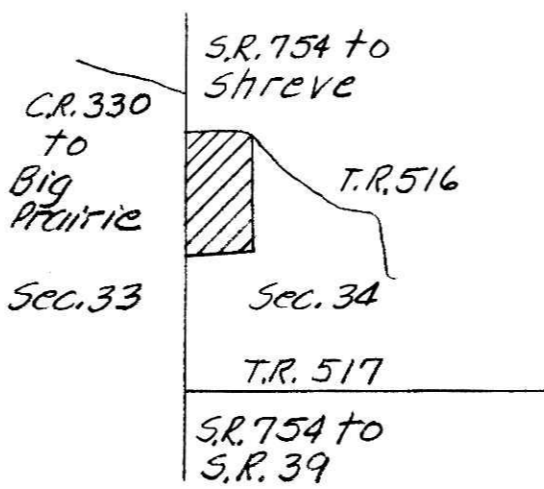
WIN SONG ESTATES
S. W. 1/4 of Sec. 34, T. 18 N., R. 14 W., RIPLEY TWP., HOL. CO., OHIO
HAROLD D. & NANCY TATE
Vol. 228 Pg. 875
Jan. 28, 1987



Acreage Table

Lot 1	5.0430 Acres
Lot 2	3.0000
Lot 3	3.0000
Lot 4	3.0000
Lot 5	3.0000
Lot 6	3.0000
20.0430 ACRES	

Location Map



CERTIFICATION OF OWNERSHIP AND DEDICATION

We hereby certify that we are the owners of the property shown hereon and that we hereby adopt this plan of subdivision with our free consent, establish the minimum building restriction lines, and the following restrictive criteria. No house trailers or modular homes shall be permitted on these lots.

1-29-87
Date

Harold D. Tate
Nancy S. Tate

CERTIFICATE OF APPROVAL OF WATER AND SEWERAGE SYSTEMS

I hereby certify that the water supply, and sewerage systems installed, or proposed for installation in the subdivision plat entitled: Win Song Estates fully meet the requirements of Holmes County Board of Health and Ohio State Health Department and are hereby approved as shown.

2-27-87
Date

James D. Doolan
Co. Health Commissioner

CERTIFICATE OF ACCURACY

I hereby certify that the plan shown and described hereon is a true and correct survey to the accuracy required by the Holmes County Planning Commission and that the monuments have been set as shown hereon.

1-30-87
Date

William J. McCullough
P.E. 34296
P.S. 6043

CERTIFICATION OF APPROVAL OF PLAT AND ENGINEERING DETAILS

I hereby certify that I have approved the plat and the engineering details of proposed roads, sewer, and water systems, and other proposed public facilities as shown on the subdivision plat.

2/12/87
Date

Robert L. Kasaneo P.E., P.S.
County Engineer

CERTIFICATION OF APPROVAL BY HOLMES SOIL AND WATER DISTRICT

I hereby certify that I have approved the subdivision plat and agreements or provisions for sedimentation or erosion controls as shown hereon.

2/23/87
Date

Vaughan J. Finner
H. S. W. C. D.

CERTIFICATION OF APPROVAL BY HOLMES COUNTY COMMISSIONERS

I hereby certify that The Holmes County Commissioners have approved the subdivision plat as shown hereon.

February 17, 1987
Date

Jack E. Howels
Chairman of the Board

CERTIFICATE OF APPROVAL FOR RECORDING

I hereby certify that the hereon subdivision plat has been found to comply with the Subdivision Regulations for Holmes County, Ohio, with the exceptions of such variances if any, as are noted in the minutes of the Holmes County Planning Commission, and that it has been approved for recording in the Holmes County Recorder's Office.

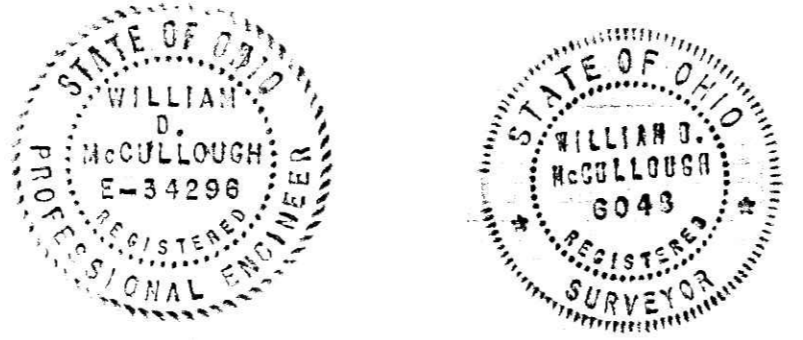
2-26-87
Date

Gay Mast
Holmes County Planning Commission

Notes: All iron pins are set or found as indicated. Those marked set 1982 are 3/8" x 30" rebar. The others marked I. Pin are 3/8" x 30" rebar with yellow cap.

The "D"s along the West side of drawing are the determined driveway locations. Putting them as indicated avoids any sight distance problems. The grantee's shall have to acquire a driveway permit from The Ohio Department of Transportation. The minimum pipe size is 12" diameter and a 40' length, as indicated by O. D. O. T.

This area is presently being strip formed, and no severe erosion problems should be anticipated.



REC'D APR 8 1987
AT 4:26 O'clock Pm
RECORDED April 9 1987
plat VOL 2 PG. 199
Holmes Co. Ohio Fee: 30.45
Recorder
Sally

4/3/87
Karin Chapman