

SURVEY TO DIVIDE THE FORMER RAILROAD PROPERTY THROUGH KILLBUCK FROM GROVER ST. TO DUNCAN ST.
Grantor: ALCO INDUSTRIES INC. Deed Vol. 225, Pg. 558

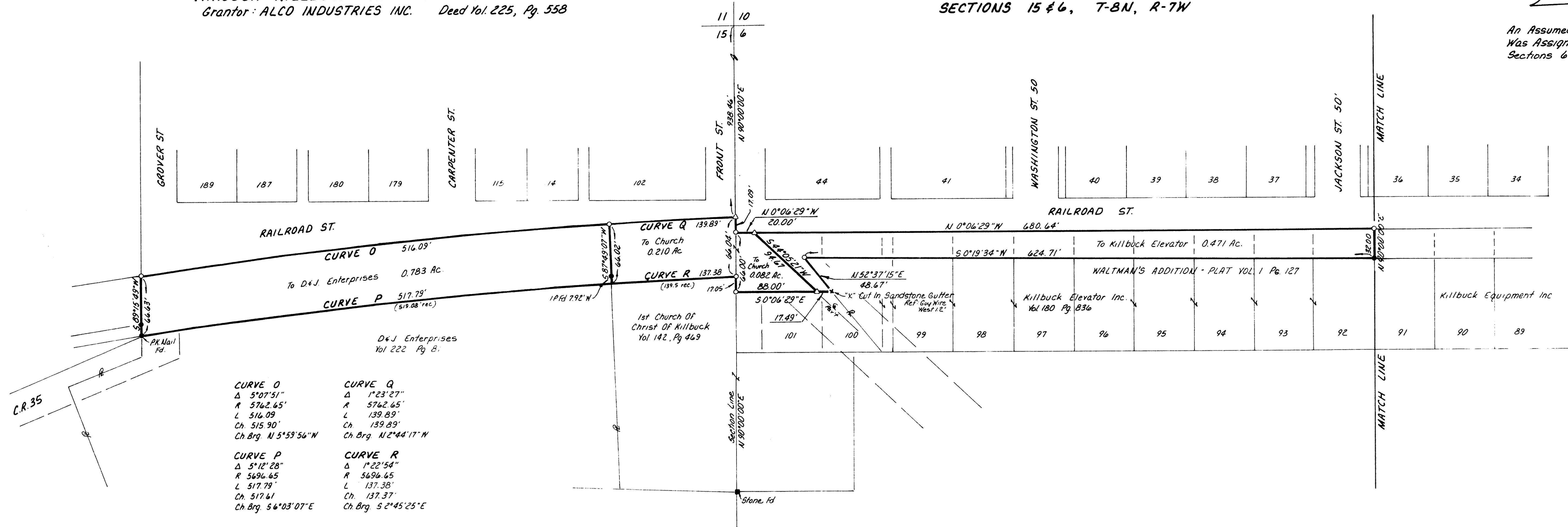
**VILLAGE OF KILLBUCK
COUNTY OF HOLMES, STATE OF OHIO
SECTIONS 15 & 6, T-8N, R-7W**

An Assumed Bearing Of N90°00'00"E Was Assigned To The Line Between Sections 6 & 15

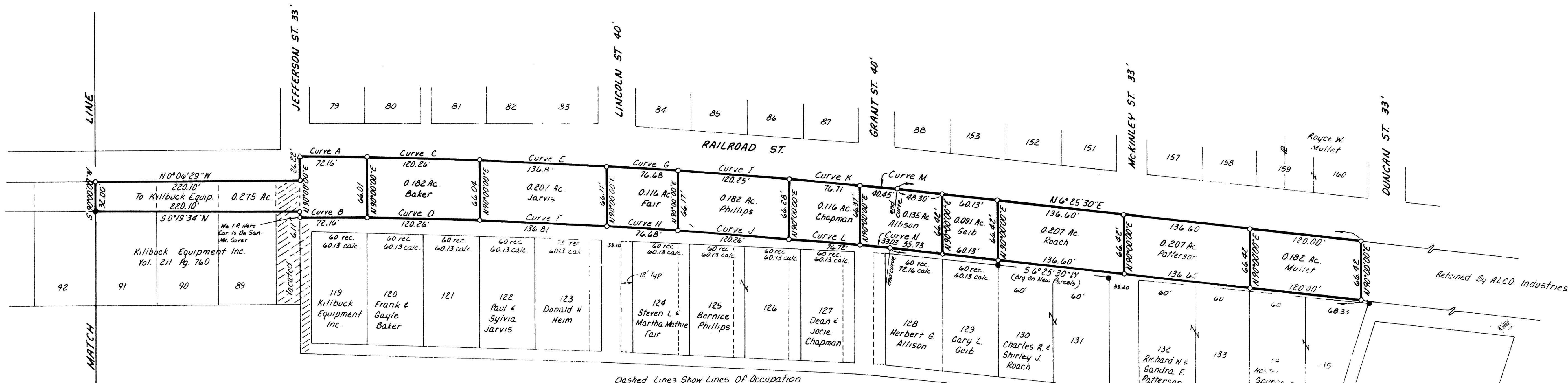
Scale 1"=60'

- Iron Pin Found
- △ Railroad Spike Set
- Iron Pin Set (Either By This Plat Or The Plats Listed Below) 5/8" Rebar With Yellow Cap Marked "LDNG-6505"

References: Plat Vol. 10, Pg. 265
Plat Vol. 11, Pg. 7



CURVE O Δ 5°07'51" R 5762.65' L 516.09' Ch 515.90' Ch.Brg N5°53'56"W	CURVE P Δ 5°12'28" R 5696.65' L 517.79' Ch 517.61' Ch.Brg S6°03'07"E	CURVE Q Δ 1°23'27" R 5762.65' L 139.89' Ch 139.89' Ch.Brg N2°44'17"W	CURVE R Δ 1°22'54" R 5696.65' L 137.38' Ch 137.37' Ch.Brg S2°45'25"E
--	--	--	--



CURVE A Δ 0°43'03" R 5762.65' L 72.16' Ch 72.16' Ch.Brg N0°23'15"E	CURVE B Δ 0°43'33" R 5696.65' L 72.16' Ch 72.16' Ch.Brg S0°23'31"W	CURVE C Δ 1°11'44" R 5762.65' L 120.26' Ch 120.26' Ch.Brg N1°20'38"E	CURVE D Δ 1°12'34" R 5696.65' L 120.26' Ch 120.26' Ch.Brg S1°21'35"W	CURVE E Δ 1°21'37" R 5762.65' L 136.81' Ch 136.81' Ch.Brg N2°37'19"E	CURVE F Δ 1°22'34" R 5696.65' L 136.81' Ch 136.81' Ch.Brg S2°39'09"W	CURVE G Δ 0°45'45" R 5762.65' L 76.68' Ch 76.68' Ch.Brg N3°41'00"E	CURVE H Δ 0°46'16" R 5696.65' L 76.68' Ch 76.68' Ch.Brg S3°43'34"W	CURVE I Δ 1°11'44" R 5762.65' L 120.25' Ch 120.25' Ch.Brg N4°39'44"E	CURVE J Δ 1°12'34" R 5696.65' L 120.26' Ch 120.26' Ch.Brg S4°42'59"W	CURVE K Δ 0°45'46" R 5762.65' L 76.71' Ch 76.71' Ch.Brg N5°38'29"E	CURVE L Δ 0°46'18" R 5696.65' L 76.72' Ch 76.72' Ch.Brg S5°42'25"W	CURVE M Δ 0°24'08" R 5762.65' L 40.45' Ch 40.45' Ch.Brg N6°13'26"E	CURVE N Δ 0°19'56" R 5696.65' L 33.03' Ch 33.03' Ch.Brg S6°15'32"W
--	--	--	--	--	--	--	--	--	--	--	--	--	--

Note: Plat Vol 1 Pg 282 & Survey Rec. 3 Pg 171 Show Lot 123 To Be 72 Feet Wide But All The Lots In The Next Block (124-127) Are Being Occupied As Though Lot 123 Were 60 Feet Wide At The Request Of The Owners I Am Making These New Lots Match The Occupation.

I Certify This Survey To Be Correct To The Best Of My Knowledge
William H Long May 19, 1986
William H Long P.S. 6505
13301 T.R. 503
Big Prairie, Ohio 44611

152993
Rec'd SEP 19 1986
Recorded Sept 23, 1986
Holmes Co. Ohio Fee 43.20
Plat Vol 2 Pg 182 Recorder Richard J. ...
36x24x5