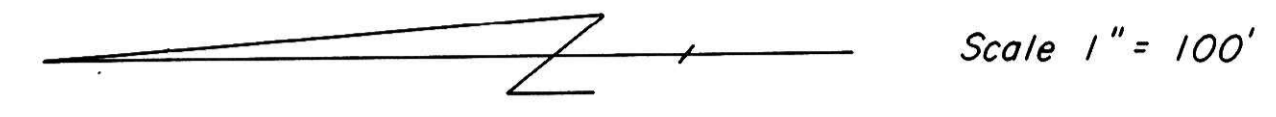
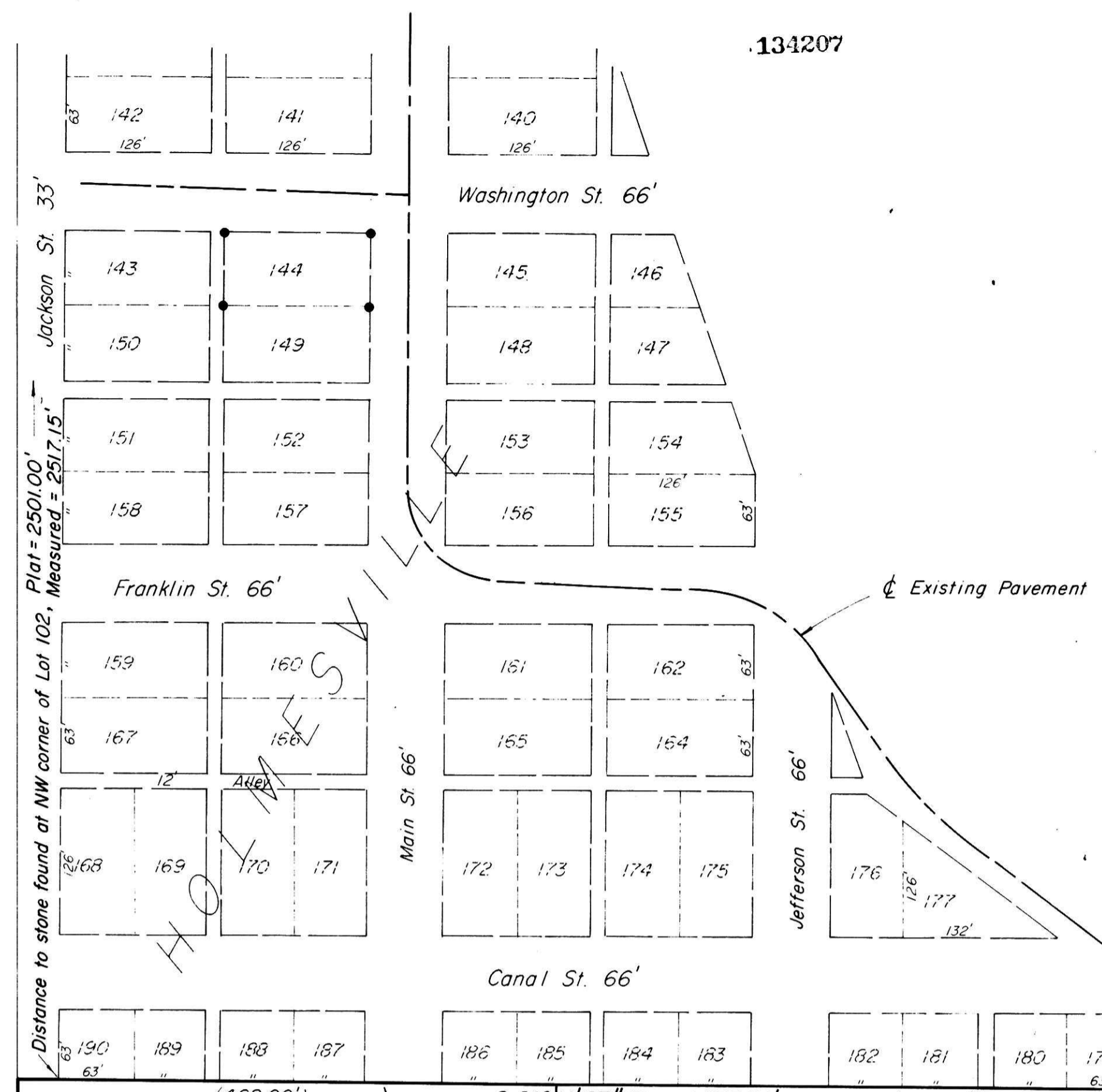


134207



Bearing orientation is based upon observations taken during the overall survey of the Killbuck Wildlife Area.

NOTE- The West line of the Village of Holmesville was established by extended pro-ration of surplus computed from found monumentation: i.e. Westerly from the stone found at the Northwest corner of Lot 102 through and including other identified points.



Distance to stone found at NW corner of Lot 102, Plat = 2501.00', Measured = 2517.15'

Original Village Line
GEORGE M. SPARGROVE
Volume 112, Page 449
12.25710 Acres (Outlot No. 7)
9.67942 Acres (Outlot No. 6)
1.49774 Acres (Right of Way)
23.43426 Acres

Outlot No. 6
9.67942 Acres

Outlot No. 7
12.25710 Acres
Includes Railroad Right-of-Way

ABANDONED B & O RAILROAD
West line of Outlot No. 6
66' R/W
1.49774 Acres

CLAY HILL FARM
Volume 210, Page 24
16 Acres (Deed)
17.336 Acres (Measured)

SECTION 3
SECTION 4

LEGEND
● Iron Pin Found

Surveyed Under The Supervision Of
John V. Horst
John V. Horst
Registered Surveyor No. 4522
May, 1981

1/2 INTEREST
EMMA L. SPARGROVE
Volume 195, Page 375
GEORGE M. SPARGROVE
Volume 112, Page 449
1.58749 Acres

0.79504 Ac.
0.79245 Ac.
2653.01' to Northwest corner of section

134207
REC'D. October 23, 1982
AT 10:55 O'CLOCK A.M.
RECORDED October 23, 1982
Plat VOL 2 PG. 80 1178
Holmes Co. Ohio Fee: 15.00
Richard Brown Recorder
Deed Vol. 218, Pg. 554
34 x 22 x 2

KILLBUCK WILDLIFE AREA

STATE OF OHIO
DEPARTMENT OF NATURAL RESOURCES
OFFICE OF CHIEF ENGINEER

SITUATED IN
Section 3, Prairie Township
Township 13 North, Range 13 West
Holmes County, Ohio

DESIGNED BY	JOB NUMBER
DRAWN BY CAF	SCALE 1" = 100'
CHECKED BY JVH	DATE May, 1981
APPROVED BY	REVISED

PLAT OF LANDS OF
GEORGE M. SPARGROVE & EMMA L. SPARGROVE

