

DUTCHLAND ACRES NO. 1

BERLIN TOWNSHIP
PART OF LOT 2, 4TH. QTR., T-9-N, R-6-W
HOLMES COUNTY
OHIO

108138 INDEXED

REC'D: July 8, 1976
AT 1:42 O'CLOCK
RECORDED: July 8, 1976
HOLMES CO. VOL. 29, PG. 161
FEE: \$16.50
Ralph Kasner
35 1/2 x 23 1/2 x 2

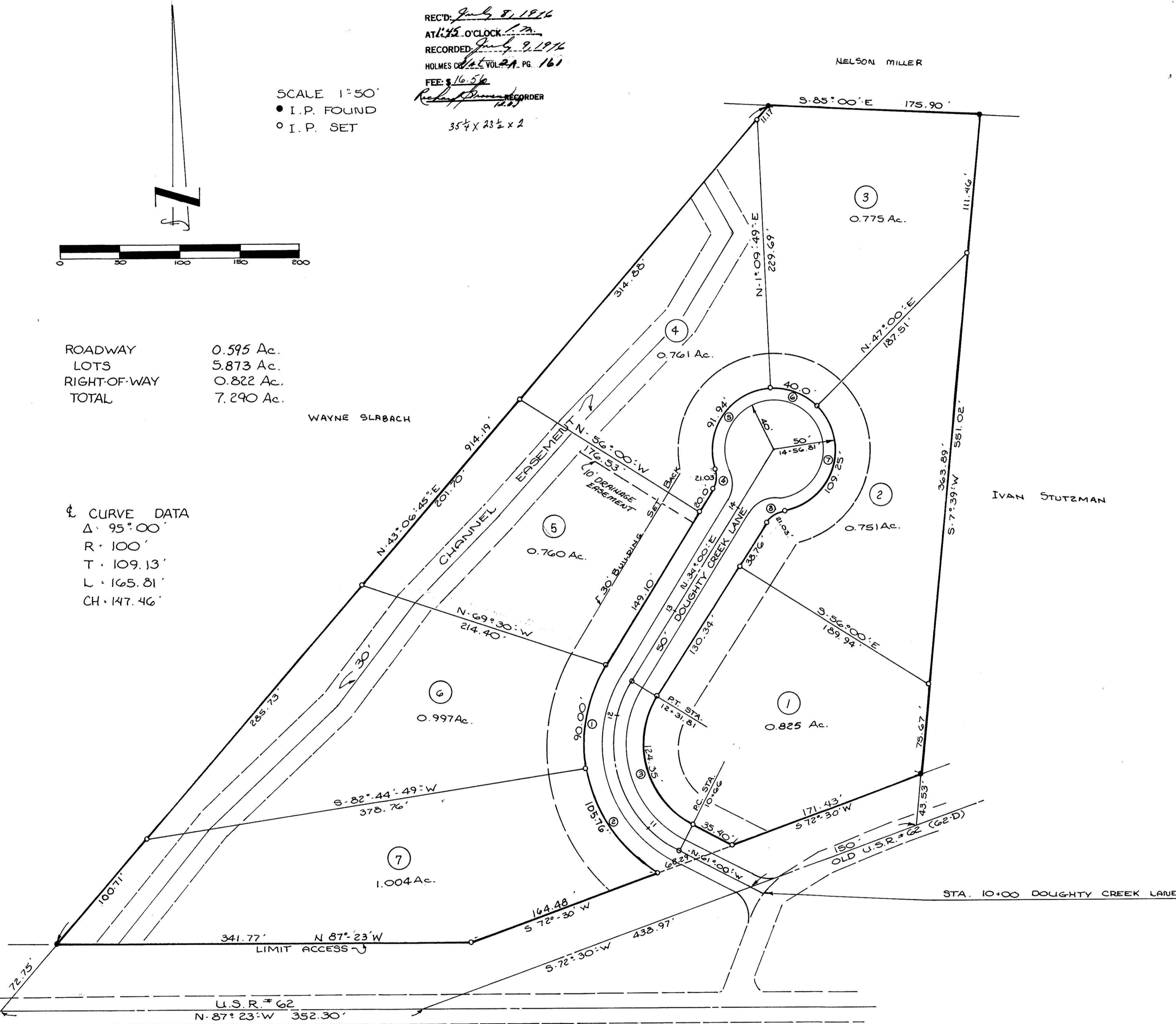
SCALE 1"=50'
• I. P. FOUND
◦ I. P. SET



ROADWAY 0.595 Ac.
LOTS 5.873 Ac.
RIGHT-OF-WAY 0.822 Ac.
TOTAL 7.290 Ac.

WAYNE SLABACH

¢ CURVE DATA
Δ · 95° 00'
R · 100'
T · 109.13'
L · 165.81'
CH · 147.46'



| | | | | | | |
|--|---|---|---|--|---|---|
| ① Δ · 41°15'11" R · 125.00' L · 90 T · 47.05' CH · 88.07' | ② Δ · 48°28'35" R · 125' L · 105.76' T · 56.28' CH · 102.63' | ③ Δ · 95°00'00" R · 75.00' T · 81.85' L · 124.35' CH · 110.59' | ④ Δ · 48°11'23" R · 25.00' L · 21.03' T · 11.18' CH · 20.41' | ⑤ Δ · 105°21'12" R · 50.00' L · 91.94' T · 65.58' CH · 79.52' | ⑥ Δ · 45°50'11" R · 50.00' L · 40.00' T · 21.14' CH · 38.94' | ⑦ Δ · 125°11'23" R · 50.00' L · 109.25' T · 96.44' CH · 88.78' |
|--|---|---|---|--|---|---|

CERTIFICATE OF OWNERSHIP AND DEDICATION

I (WE) HEREBY CERTIFY THAT I AM (WE ARE) THE OWNER(S) OF THE PROPERTY SHOWN AND DESCRIBED HEREON AND THAT I (WE) HEREBY ADOPT THIS PLAN OF SUBDIVISION WITH MY (OUR) FREE CONSENT, ESTABLISH THE MINIMUM BUILDING RESTRICTION LINES, AND DEDICATE ALL STREETS, ALLEYS, WALKS, PARKS AND OTHER OPEN SPACES TO PUBLIC OR PRIVATE USE AS NOTED.

May 24, 1976 19__
DATE

Helen Mullet
OWNER
Helen Mullet
OWNER

BEFORE ME Clyde Sundheimer A NOTARY PUBLIC IN AND FOR SAID COUNTY AND STATE PERSONALLY APPEARED THE ABOVE WHO ACKNOWLEDGED THAT THEY DID SIGN THE FOREGOING AND THAT THE SAME IS THEIR OWN FREE ACT AND DEED. SIGNED AND SEALED THIS 24th DAY OF May 1976.

Clyde Sundheimer
NOTARY PUBLIC
CLYDE E. SUNDHEIMER
Notary Public, Holmes County, Ohio
My Commission Expires Feb. 6, 1979



CERTIFICATION OF THE APPROVAL OF PLAT AND ENGINEERING DETAILS

I HEREBY CERTIFY THAT I HAVE APPROVED THE PLAT AND ENGINEERING DETAILS OF THE PROPOSED ROADS, SEWER AND WATER SYSTEMS AND OTHER PROPOSED PUBLIC FACILITIES IN THE SUBDIVISION PLAT AS SHOWN HEREON.

6/2 1976
DATE

Robert L. Kasner
COUNTY ENGINEER

CERTIFICATION OF APPROVAL BY HOLMES SOIL AND WATER CONSERVATION DISTRICT
I HEREBY CERTIFY THAT I HAVE APPROVED THE SUBDIVISION PLAT AND/OR AGREEMENTS OR PROVISIONS FOR SEDIMENTATION AND EROSION CONTROL AS STATED OR SHOWN HEREON.

7/1 1976
DATE

Harold Lang Jr.
HOLMES SOIL AND WATER CONSERVATION DIST.

CERTIFICATION OF THE APPROVAL BY THE COUNTY COMMISSIONERS

I HEREBY CERTIFY THAT THE HOLMES COUNTY COMMISSIONERS HAVE APPROVED THE SUBDIVISION PLAT AS SHOWN HEREON.

6/21 1976
DATE

Ralph Kasner
CHAIRMAN, COUNTY COMMISSIONERS

CERTIFICATE OF APPROVAL FOR RECORDING

I HEREBY CERTIFY THAT THE SUBDIVISION PLAT SHOWN HEREON HAS BEEN FOUND TO COMPLY WITH THE SUBDIVISION REGULATIONS FOR HOLMES COUNTY, OHIO, WITH THE EXCEPTION OF SUCH VARIANCES IF ANY, AS ARE NOTED IN THE MINUTES OF THE HOLMES COUNTY REGIONAL PLANNING COMMISSION AND THAT IT HAS BEEN APPROVED FOR RECORDING IN THE OFFICE OF THE COUNTY RECORDER.

7/1 1976
DATE

John Hottel
CHAIRMAN, HOLMES COUNTY REGIONAL PLANNING COMMISSION

CERTIFICATE OF ACCURACY

I HEREBY CERTIFY THAT THE PLAN SHOWN AND DESCRIBED HEREON IS TRUE AND CORRECT SURVEY TO THE ACCURACY REQUIRED BY THE HOLMES COUNTY REGIONAL PLANNING COMMISSION AND THAT THE MONUMENTS HAVE BEEN PLACED AS SHOWN HEREON.

May 3 1976
DATE

Clyde E. Tudy
REGISTERED SURVEYOR 2.5. #4900

CERTIFICATION OF THE APPROVAL OF WATER AND SEWERAGE SYSTEMS

I HEREBY CERTIFY THAT THE WATER SUPPLY AND SEWAGE DISPOSAL UTILITY SYSTEMS INSTALLED, OR PROPOSED FOR INSTALLATION, IN THE SUBDIVISION PLAT ENTITLED: DUTCHLAND Acres No. 1 FULLY MEET THE REQUIREMENTS OF HOLMES COUNTY BOARD OF HEALTH AND THE OHIO STATE HEALTH DEPARTMENT, AND ARE HEREBY APPROVED AS SHOWN.

June 30 1976
DATE

Manuel Stueber
COUNTY HEALTH COMMISSIONER



TRANSFERRED
CONVEYANCE EXAMINED,
SECT. 319.202 R. C.
COMPLIED WITH
JUL 8 1976
DARRELL CONKLE, Auditor
HOLMES CO., OHIO
Darrell Conkle