

# OCTOBER HILL PHASE III HOLMES COUNTY 1974

Utility Services  
Sanitary Service 80 lots 237-271, 342-388  
Water Service 252 lots 237-498, 520  
Electric Service 244 lots 237-500

Situate in the State of Ohio, County of Holmes, Township of Knox, and being 30.3 Acres ± out of the EAST half of the SOUTHWEST QUARTER of Section 19, T.19, R.15 and being 3.4 Acres ± out of the NORTHWEST QUARTER of the SOUTHWEST QUARTER of Section 20, T.19, R.15 and being 0.00 Acres out of the SOUTHWEST QUARTER of the SOUTHWEST QUARTER of Section 20, T.19, R.15 Acres shown are Lots and Right of Ways, Total Acreage of Plat is 61.00 Acres.

I hereby certify that the Water Supply and sewerage disposal Utility Systems proposed for installation in the development entitled; OCTOBER HILL PHASE III, fully meet the requirements of HOLMES COUNTY, BOARD OF HEALTH and the OHIO STATE BOARD OF HEALTH and are hereby approved as previously submitted. Approved this 7 day of March 1974.

*James M. ...*  
HOLMES COUNTY HEALTH COMMISSIONER

I hereby certify that I have approved the plat and engineering details of the proposed roads, sewer & water systems and any other public facilities in the development plat as shown hereon, this 7 day of March 1974.

*Robert L. ...*  
HOLMES COUNTY ENGINEER

I hereby certify that the development plat shown hereon has been found to comply with the subdivision regulations for HOLMES COUNTY, OHIO, with the exception of such variances, if any as are noted in the minutes of the HOLMES COUNTY REGIONAL PLANNING COMMISSION and that it has been approved for recording in the office of the county recorder, this 15 day of March 1974.

*Donald L. Sullivan*  
CHAIRMAN, HOLMES CO. REGIONAL PLANNING COMMISSION

I hereby certify that the HOLMES COUNTY COMMISSIONERS have approved the development plat as shown hereon, at regular meeting held this 18 day of March 1974.

*John ...*  
CHAIRMAN, HOLMES COUNTY COMMISSIONERS

STATE OF OHIO  
COUNTY OF ASHLAND ss  
Before me a notary public personally appeared RICHARD P. SHAFRATH, President and MICHAEL D. SAAD, Secretary of the OCTOBER HILL DEVELOPMENT CO. general partner of OCTOBER HILL CAMPLLOT LTD., and acknowledge the making of the attached plat to be their voluntary act and deed.  
In Testimony whereof I have hereunto set my hand and official seal this 28th day of February 1974.

*John ...*  
NOTARY PUBLIC, STATE OF OHIO  
MY COMMISSION EXPIRES August 8 1978

Be it remembered, that we, the OCTOBER HILL DEVELOPMENT CO., general partner of OCTOBER HILL CAMPLLOT LTD., owners of the land shown on this plat do hereby acknowledge the making of said plat and subdivision of the above property was of our free and voluntary act and deed.

In testimony whereof, we have hereunto set our hands, this 28th day of February 1974.

*Richard P. Shafrauth*  
*Michael D. Saad*  
RICHARD P. SHAFRATH, PRESIDENT & GENERAL PARTNER  
MICHAEL D. SAAD, SECRETARY & GENERAL PARTNER

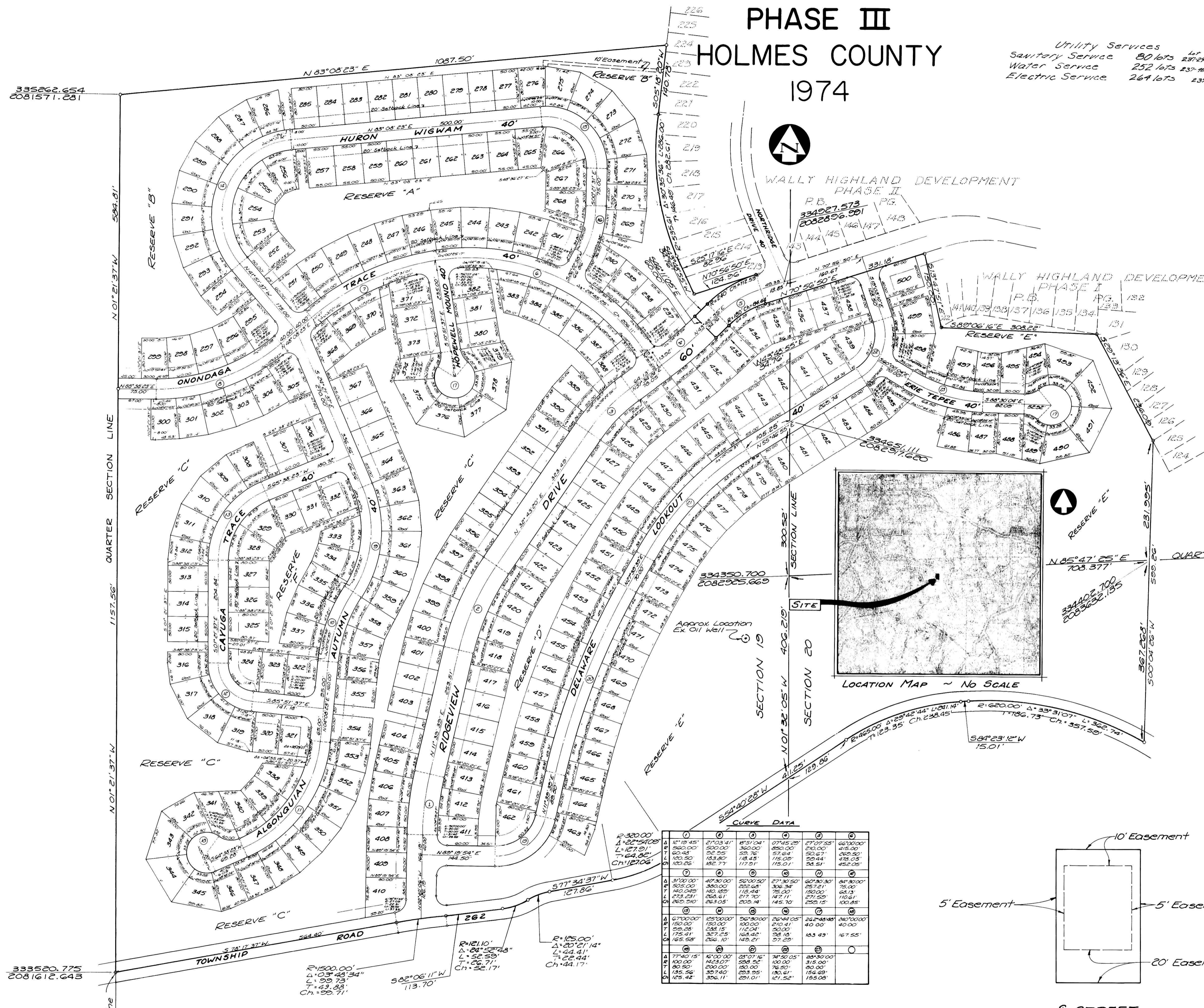
Received for record by the HOLMES COUNTY RECORDER this 2nd day of April 1974. Recorded in Volume 2A Page 148 at 12:17 PM

*Richard ...*  
HOLMES COUNTY RECORDER

We do hereby certify, that we have surveyed the above premises, prepared the attached plat and that said plat is correct. All dimensions shown are in feet and decimal parts thereof. Dimensions shown along curves are chord measurement. Iron pins are indicated by the following symbol —○—. Permanent markers, to be placed upon completion of construction necessary to the improvement of this land, are indicated by the following symbol —●—. Coordinates shown on plat are Ohio State Plane Coordinate System, North Grid.

*William ...*  
P.E. MARTIN & ASSOCIATES INC.  
ENGINEERS - LAND PLANNERS - SURVEYORS  
77 E. WILSON BRIDGE RD. - WORTHINGTON, OHIO  
SCALE 1"=100' FEBRUARY, 1974

*William ...*  
REGISTERED SURVEYOR



Note: Lots shown on this plat are for camping only. Tents, camping trailers and recreational vehicles shall be used only as a place of habitation. Storage sheds will be permitted with the following restrictions:  
1. Maximum size 8'x10' Wood or metal construction  
2. Shall be mounted skids (concrete slabs will not be permitted)  
3. Shall not have water, sewer, or electric service.  
4. Shall not be used as automotive storage.

5. Storage sheds shall be inspected for compliance with regulations on a yearly basis by the Lot Owners Association & certified by letter to the Holmes County Planning Commission.

TYPICAL LOT & EASEMENTS  
TO APPLY TO LOTS 237 THRU 500 INCLUSIVE  
OCTOBER HILL PHASE III

TOTAL LOTS 204

HOLMES COUNTY  
REGIONAL PLANNING COMMISSION  
Hotel Millersburg  
MILLERSBURG, OHIO 44654  
Phone 674-4866

June 19, 1974

Richard Graven  
County Recorder  
Holmes County Courthouse  
Millersburg, Ohio 44654  
Dear Dick:  
The Holmes County Regional Planning Commission voted at their June meeting to rescind condition number 2 on the plat for October Hill Camplot, Inc. phase III. The Planning Commission will permit the use of concrete pads under the storage sheds. Please attach this to the plat.  
Thank you.

Sincerely,  
*Leah M. Wright*  
Leah M. Wright  
Planning Coordinator

REC'D: June 21 1974  
AT 8:38 O'CLOCK AM  
RECORDED: June 21 1974  
HOLMES CO. VOL. 2 PG. 277  
FILED: June 21 1974  
Richard Graven, RECORDER

Planning Together for Orderly Progress of Holmes County

Original Letter: Slipped underneath Large Plat of October Hill Camplot, Inc. Phase III that is recorded in Plat Volume 2-A Page 148 of Holmes County Plat Records.

Richard Graven, Recorder