

BERLIN TOWNSHIP

FED. RD. DIVISION	STATE	PROJECT
2	OHIO	

39
39

HOLMES COUNTY
CO. RD. NO. 120

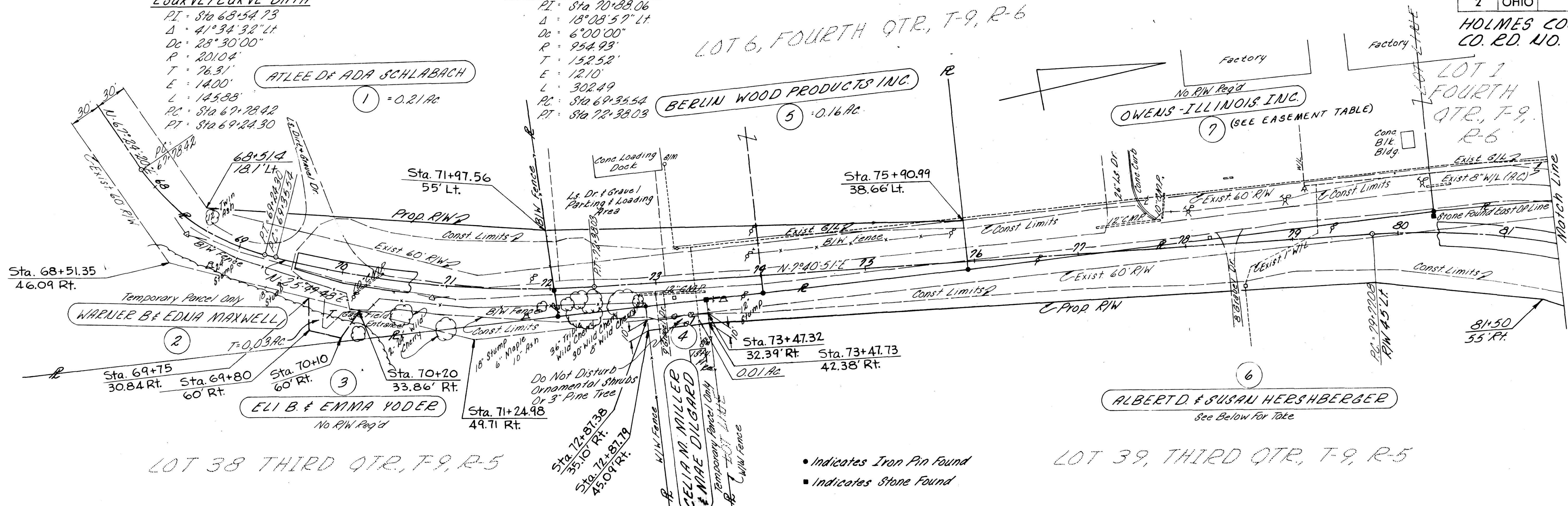
LOT 6, FOURTH QTR., T-9, R-6

RELOC. C.R. 120 CURVE DATA

PI - Sta 68+54.73
 Δ - $41^{\circ}34'32''$ Lt
 Dc - $28^{\circ}30'00''$
 R - 201.04'
 T - 76.31'
 E - 14.00'
 L - 125.88'
 PC - Sta 67+28.42
 PT - Sta 69+24.30

RELOC. C.R. 120 CURVE DATA

PI - Sta 70+88.06
 Δ - $18^{\circ}08'57''$ Lt
 Dc - $6^{\circ}00'00''$
 R - 254.93'
 T - 152.52'
 E - 12.10'
 L - 302.49'
 PC - Sta 69+35.54
 PT - Sta 72+38.03



LOT 38 THIRD QTR., T-9, R-5

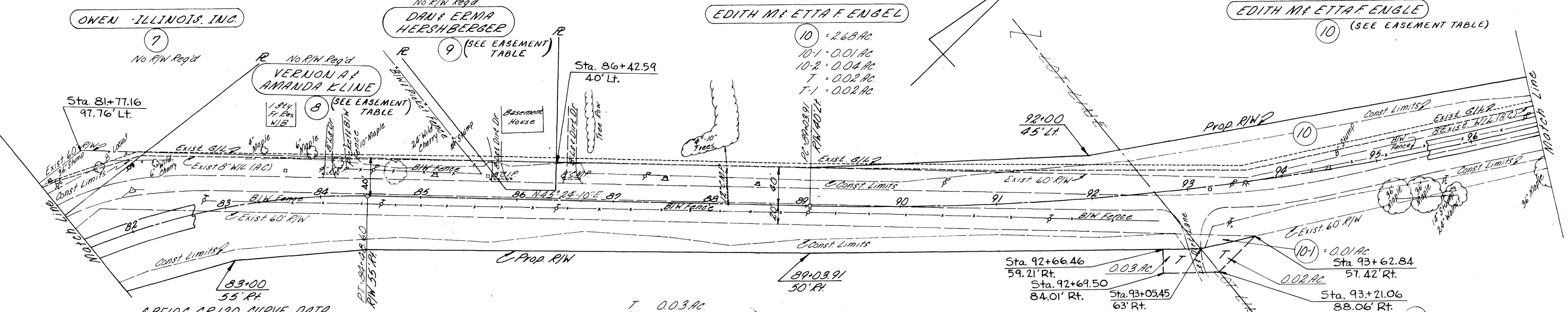
LOT 39, THIRD QTR., T-9, R-5

BERLIN TOWNSHIP

LOT 1 FOURTH QTR., T-9, R-6

LOT 39, THIRD QTR., T-9, R-5

LOT 40, THIRD QTR., T-9, R-5



RELOC. C.R. 120 CURVE DATA

PI - Sta 82+21.74
 Δ - $37^{\circ}43'19''$ Pt
 Dc - $8^{\circ}00'00''$
 R - 716.20'
 T - 244.66'
 E - 40.64'
 L - 471.52'
 PC - Sta 79+77.08
 PT - Sta 84+48.60

UTILITY EASEMENTS

Granted To	From	Vol.	Pg.	Date	Parcel No.
The Berlin Water Co.	Edith M. & Etta F. Engel	165	72	1967	10
The Berlin Water Co.	Dan & Erma Hershberger	165	73	1967	9
The Berlin Water Co.	Joe J. & Erma Beechy (Kline Prop)	165	71	1967	8
Columbia Gas Inc., of Ohio	Edith M. & Etta F. Engel	165	103	1967	10
Columbia Gas Inc., of Ohio	Dan & Erma Hershberger	165	102	1967	9
Columbia Gas Inc., of Ohio	Joe J. & Erma Beechy (Kline Prop)	165	101	1967	8
Columbia Gas Inc., of Ohio	Owens-Illinois Co.	165	212	1967	7

LOT 39, THIRD QTR., T-9, R-5

LOT 40, THIRD QTR., T-9, R-5

HOLMES C.R. 120
RIGHT OF WAY PLAN

94057
 REC'D: December 24, 1971
 AT 11:01 O'CLOCK P.M.
 RECORDED: December 24, 1971
 HOLMES CO. REC'D VOL. 2, PG. 136
 FILE: 2-14-02
 Richard A. ... RECORDER