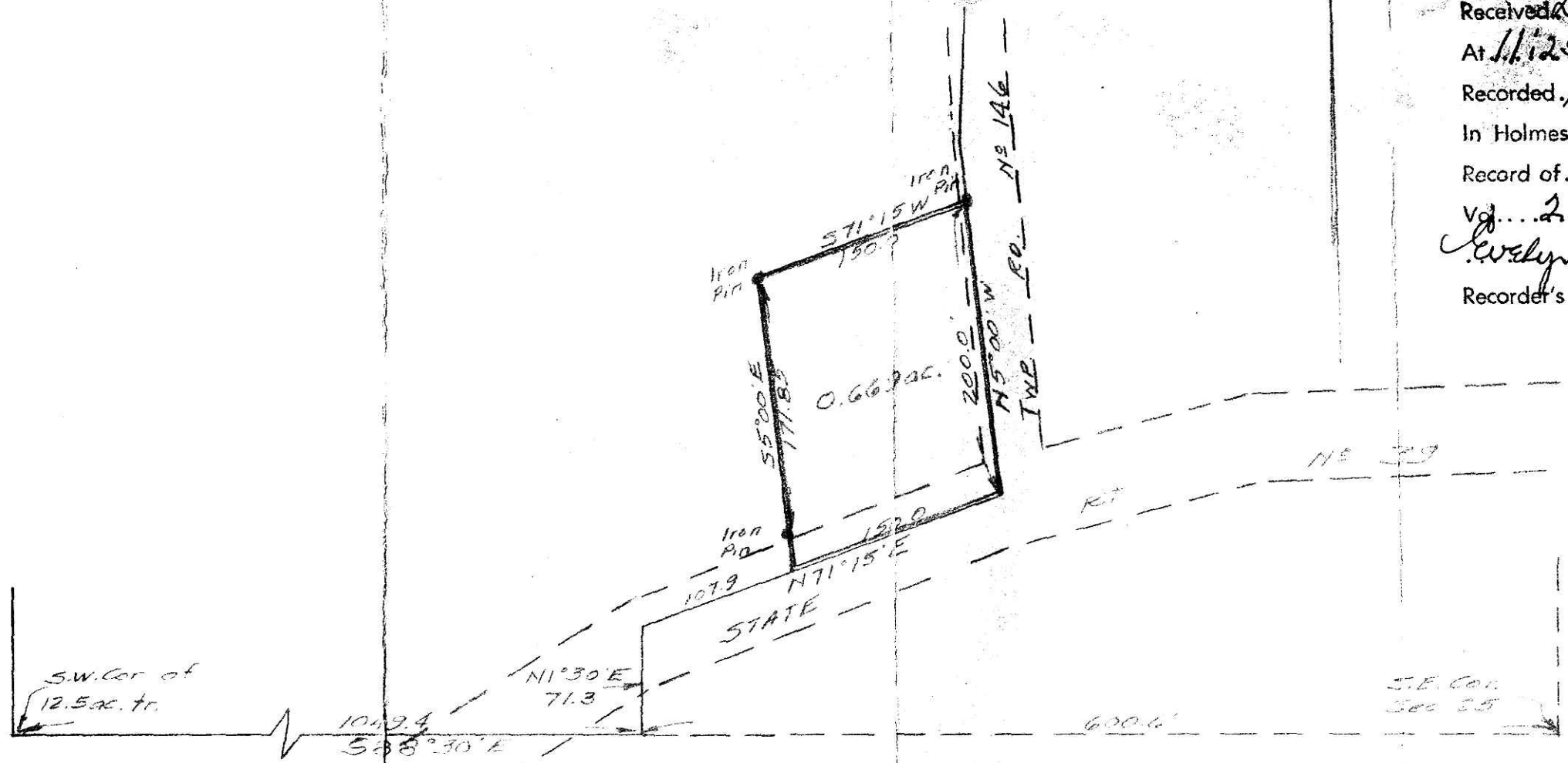


Received *December 27, 1957*
 At *11:25* o'clock... *#1*...M
 Recorded *December 27, 1957*
 In Holmes County
 Record of... *Plats*.....
 Vol... *2*... Page... *119*.....
Evelyn Anderson, Recorder
 Recorder's Fee \$ *1.00*.....



Plat of Survey of part of a 12.5 acre tract in the S.E. Qr. of Sec 25, T9, R4 Walnutcreek Twp., Holmes County
 Scale: 1 in. = 100 ft.
 D.Y. Mickimen Reg. Surveyor
 New Phila, Ohio